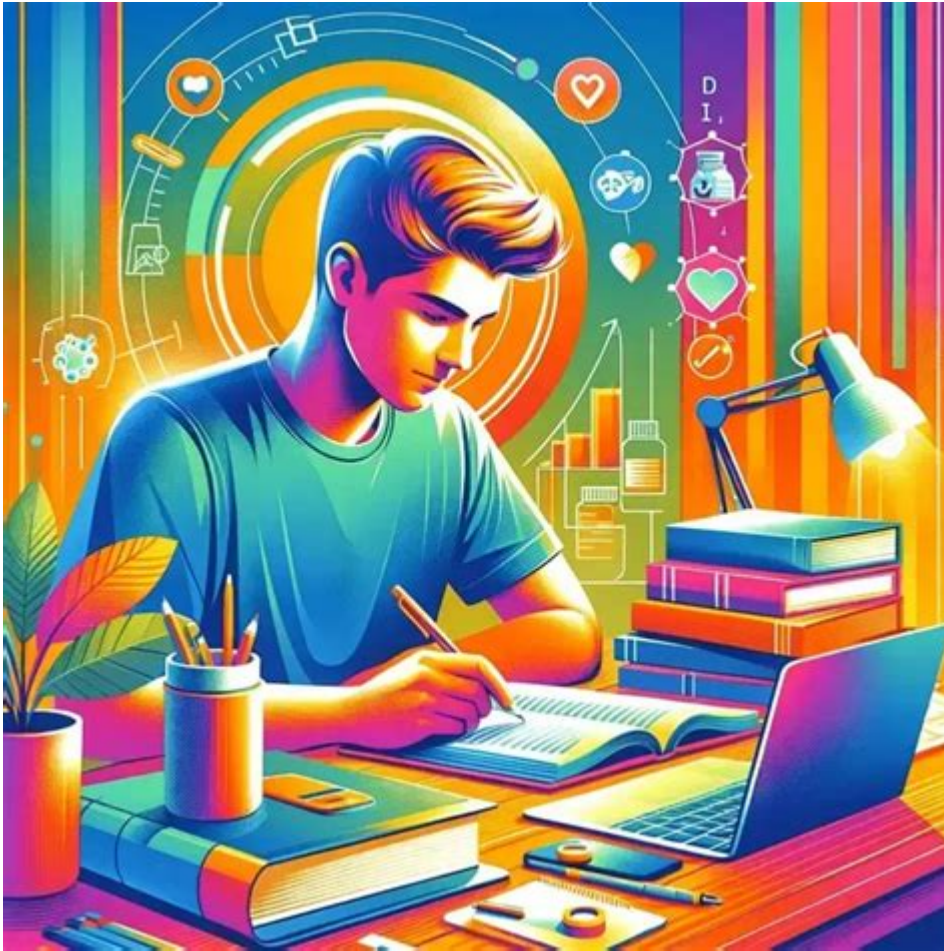


# Challenge Lpn Exam Florida



**Challenge LPN Exam Florida** is a topic of considerable interest for many aspiring nurses in the state. The Licensed Practical Nurse (LPN) exam is a crucial step for those seeking to enter the nursing profession. In Florida, individuals must pass the NCLEX-PN (National Council Licensure Examination for Practical Nurses) to obtain their LPN license. This article aims to provide a comprehensive overview of the challenge LPN exam in Florida, including eligibility requirements, preparation strategies, and tips for success.

## Understanding the Challenge LPN Exam

The challenge LPN exam is an opportunity for individuals who may not have completed a traditional nursing program to demonstrate their competency and knowledge in nursing. This option is particularly beneficial for those with prior healthcare experience or education in related fields.

## Eligibility Requirements

Before one can challenge the LPN exam in Florida, it is essential to meet specific eligibility

criteria. The following are the primary requirements:

1. **Educational Background:** Candidates must have completed a nursing education program approved by the Florida Board of Nursing or equivalent training. This can include programs from other states or countries as long as they meet Florida standards.
2. **Practical Nursing Experience:** Applicants typically need to have a certain amount of hands-on experience in a healthcare setting. This experience can be accumulated through work as a nursing assistant, medical assistant, or other healthcare roles.
3. **Application Submission:** Interested candidates must submit an application to the Florida Board of Nursing, including proof of education and experience. A criminal background check may also be required.
4. **Fees:** There are fees associated with the application process and the exam itself. Candidates should check the Florida Board of Nursing website for the most current fee structure.
5. **Approval:** Once the application is reviewed and approved, candidates will receive an authorization to test (ATT), allowing them to schedule their exam.

## **Preparing for the Challenge LPN Exam**

Preparation is key to success in the challenge LPN exam. Here are some effective strategies to help candidates get ready:

### **Study Resources**

Utilizing the right study materials can make a significant difference in exam performance. Here are some recommended resources:

- **NCLEX-PN Review Books:** Books specifically designed for the NCLEX-PN can provide a comprehensive review of nursing concepts and practice questions.
- **Online Practice Exams:** Many websites and organizations offer practice tests that simulate the NCLEX-PN format, helping candidates become familiar with the exam structure.
- **Nursing Study Guides:** These guides cover essential nursing topics and may include visual aids, case studies, and tips for test-taking strategies.
- **Study Groups:** Joining a study group can provide motivation and support. Discussing topics with peers can enhance understanding and retention of material.

### **Study Schedule**

Creating a study schedule is crucial for effective preparation. Here are steps to design a personalized study plan:

1. **Assess Knowledge Gaps:** Take a practice exam to identify areas where more study is needed.
2. **Set Goals:** Establish clear and realistic study goals. For example, aim to cover specific topics each week leading up to the exam.
3. **Allocate Time:** Dedicate consistent study blocks each day or week, ensuring ample time for review and practice questions.
4. **Incorporate Breaks:** Include breaks in your study schedule to prevent burnout and maintain focus.

## **Test-Taking Strategies**

Understanding test-taking strategies can greatly enhance performance on the exam day. Here are some tips:

- **Read Questions Carefully:** Pay attention to keywords such as "always," "never," "best," and "most." These can significantly influence the correct answer.
- **Eliminate Wrong Answers:** Use the process of elimination to narrow down answer choices. This can increase the likelihood of selecting the correct answer.
- **Time Management:** Keep an eye on the time during the exam. If you find yourself stuck on a question, move on and return to it later if time permits.
- **Stay Calm:** Anxiety can negatively impact performance. Practice relaxation techniques, such as deep breathing, to stay calm during the exam.

## **Day of the Exam**

The day of the challenge LPN exam is crucial, and proper preparation can lead to a successful experience. Here are some tips for the exam day:

## **What to Bring**

Candidates should ensure they have all necessary materials ready for the exam:

- **Valid ID:** A government-issued photo ID is typically required for identification purposes.
- **Authorization to Test (ATT):** Bring the ATT letter received from the Florida Board of Nursing.

- Comfortable Attire: Wear comfortable clothing, as the exam can be several hours long.

## **Exam Logistics**

Candidates should arrive at the testing center early to allow time for check-in and any unexpected delays. Familiarize yourself with the testing location beforehand, if possible, to reduce anxiety on exam day.

## **After the Exam**

Once candidates have completed the challenge LPN exam, they will need to wait for results. Here's what to expect:

## **Results and Next Steps**

- Receiving Results: In Florida, NCLEX-PN results are typically available within a few days. Candidates can check their results online through the Florida Board of Nursing website.
- Passing the Exam: If successful, candidates will receive information on how to obtain their LPN license, including any additional requirements such as CPR certification.
- Retaking the Exam: If candidates do not pass the exam, they can retake it. It is essential to review the areas of weakness and adjust the study plan accordingly before attempting the exam again.

## **Conclusion**

Challenging the LPN exam in Florida is a viable path for many aspiring nurses. By meeting the eligibility requirements, preparing thoroughly, and employing effective test-taking strategies, candidates can increase their chances of success. Whether you have a background in healthcare or are transitioning from another field, with the right preparation and mindset, you can achieve your goal of becoming a licensed practical nurse in Florida.

## **Frequently Asked Questions**

### **What is the process to challenge the LPN exam in Florida?**

To challenge the LPN exam in Florida, candidates must submit a completed application to the Florida Board of Nursing, provide proof of eligibility, and pay the required fees.

Additional requirements may include documentation of relevant education or experience.

## **What are the eligibility requirements for challenging the LPN exam in Florida?**

Eligibility requirements typically include having a valid social security number, being at least 18 years old, and completing a nursing education program that meets state standards. Candidates may also need to demonstrate equivalent experience or training if they did not complete a formal program.

## **How often is the LPN exam offered in Florida?**

The LPN exam, administered by Pearson VUE, is offered regularly throughout the year at various testing centers in Florida. Candidates should check the Pearson VUE website for specific dates and availability.

## **What study materials are recommended for the LPN exam in Florida?**

Recommended study materials include NCLEX-PN review books, online practice tests, and study guides that focus on the topics covered in the exam. Many candidates also benefit from review courses offered by nursing schools or professional organizations.

## **What is the passing score for the LPN exam in Florida?**

The passing score for the LPN exam is determined by the National Council of State Boards of Nursing and is typically set around 85-90%. However, the exact passing standard may vary, so candidates should refer to official resources for the most current information.

## **What should I do if I fail the LPN exam in Florida?**

If you fail the LPN exam in Florida, you can retake the exam after a waiting period. It's advisable to review your performance reports, focus on weak areas, and consider additional study resources or prep courses before attempting the exam again.

Find other PDF article:

<https://soc.up.edu.ph/59-cover/Book?ID=WB39-4548&title=the-fort-by-bernard-cornwell.pdf>

## **Challenge Lpn Exam Florida**

### **ChessGPT - Play Chess Online Against the AI - Chess.com**

Enjoy a friendly game of computer chess with ChessGPT. Have a fun and engaging chess experience and see whether you can win vs. the bot.

[Up for the challenge/Up to the challenge - WordReference Forums](#)

May 14, 2021 · You've already explained the difference between up for (in one of its uses) and up to (also in one of its uses), but your first sentence sounds a bit odd, since being "up to the ...

*Take up / Take on | WordReference Forums*

Dec 10, 2010 · The word "challenge" effectively means something different in "to take up a challenge" and "to take on a challenge", the difference of nuance is whether you view the ...

### **Play Chess Online for FREE - 2 Player Chess - Chess.com**

Play live 2-player chess online for free in seconds! Challenge a random opponent or a friend with a simple click. No registration or download is required!

*Level Up Your Chess And Win Prizes In The 2025 Chess ...*

Dec 12, 2024 · By participating in the 2025 Chess Improvement Challenge, you can connect with other members and coaches and support each other in your journey. You can count on club ...

### **The challenge (s) with/of - WordReference Forums**

Jul 28, 2014 · Hi, I'm looking for some advice on which preposition to use after the noun 'challenge'. I can't find any rules on-line (though 'challenge' is a difficult word to google for, too ...

### **"Propose a challenge" in American English - WordReference Forums**

Jul 11, 2014 · Hello everyone, Is the verb "propose" + "challenge" idiomatically used in American English. My example: "Man, I want to propose a challenge here to you: if you beat me at chess ...

### **meet the challenge - WordReference Forums**

Aug 26, 2012 · I am wondering if the phrase "meet the challenge" has the indication of finally overcoming the difficulty or it only means facing up to the difficulty without indicating how the ...

*Daily Chess Puzzles - Your Daily Chess Challenge - Chess.com*

Improve your chess skills with daily puzzles which get more difficult throughout the week. Sharpen your skills with puzzles made to improve pattern recognition.

### **Chess.com - Play Chess Online - Free Games**

Play chess online for free on Chess.com with over 200 million members from around the world. Have fun playing with friends or challenging the computer!

### **ChessGPT - Play Chess Online Against the AI - Chess.com**

Enjoy a friendly game of computer chess with ChessGPT. Have a fun and engaging chess experience and see whether you can win vs. the bot.

*Up for the challenge/Up to the challenge - WordReference Forums*

May 14, 2021 · You've already explained the difference between up for (in one of its uses) and up to (also in one of its uses), but your first sentence sounds a bit odd, since being "up to the ...

*Take up / Take on | WordReference Forums*

Dec 10, 2010 · The word "challenge" effectively means something different in "to take up a challenge" and "to take on a challenge", the difference of nuance is whether you view the ...

*Play Chess Online for FREE - 2 Player Chess - Chess.com*

Play live 2-player chess online for free in seconds! Challenge a random opponent or a friend with a simple click. No registration or download is required!

*Level Up Your Chess And Win Prizes In The 2025 Chess ...*

Dec 12, 2024 · By participating in the 2025 Chess Improvement Challenge, you can connect with other members and coaches and support each other in your journey. You can count on club ...

*The challenge (s) with/of - WordReference Forums*

Jul 28, 2014 · Hi, I'm looking for some advice on which preposition to use after the noun 'challenge'. I can't find any rules on-line (though 'challenge' is a difficult word to google for, too ...

**"Propose a challenge" in American English - WordReference ...**

Jul 11, 2014 · Hello everyone, Is the verb "propose" + "challenge" idiomatically used in American English. My example: "Man, I want to propose a challenge here to you: if you beat me at chess ...

*meet the challenge - WordReference Forums*

Aug 26, 2012 · I am wondering if the phrase "meet the challenge" has the indication of finally overcoming the difficulty or it only means facing up to the difficulty without indicating how the ...

*Daily Chess Puzzles - Your Daily Chess Challenge - Chess.com*

Improve your chess skills with daily puzzles which get more difficult throughout the week. Sharpen your skills with puzzles made to improve pattern recognition.

*Chess.com - Play Chess Online - Free Games*

Play chess online for free on Chess.com with over 200 million members from around the world. Have fun playing with friends or challenging the computer!

Struggling to challenge the LPN exam in Florida? Discover how to prepare effectively and boost your chances of success. Learn more now!

[Back to Home](#)