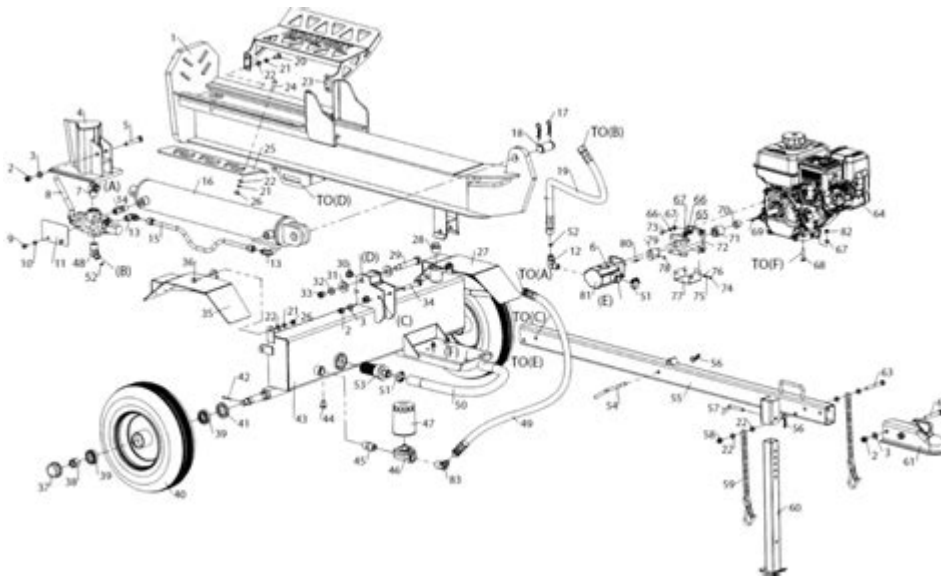


Champion 34 Ton Log Splitter Parts Diagram



Champion 34 Ton Log Splitter Parts Diagram is an essential reference for anyone who owns or maintains this powerful piece of equipment. Understanding the various components of the Champion 34 Ton Log Splitter not only helps in efficient operation but also aids in troubleshooting and repairs. This article will delve into the specific parts of the log splitter, their functions, maintenance tips, and how to interpret the parts diagram effectively.

Overview of the Champion 34 Ton Log Splitter

The Champion 34 Ton Log Splitter is renowned for its robust performance and durability, making it an excellent choice for both homeowners and professionals. With a powerful engine and hydraulic system, it can tackle logs of varying sizes efficiently. To maximize its lifespan and performance, understanding the parts and their functionalities is crucial.

Key Features of the Champion 34 Ton Log Splitter

- **Powerful Engine:** Equipped with a reliable 196cc engine that provides ample force for splitting logs.
- **Hydraulic System:** Features a high-capacity hydraulic pump that enhances splitting speed and efficiency.
- **Durability:** Constructed with a sturdy steel frame that withstands harsh conditions and heavy use.
- **Wheels for Mobility:** Comes with pneumatic tires that allow easy maneuverability across different terrains.

Understanding the Parts Diagram

A parts diagram serves as a visual representation of the log splitter's components. Understanding this diagram is vital for effective maintenance and repair. Below, we break down the key sections of the Champion 34 Ton Log Splitter parts diagram.

Main Components of the Parts Diagram

1. Engine Assembly

- The heart of the log splitter, responsible for powering the hydraulic system.
- Includes components such as the air filter, carburetor, spark plug, and ignition coil.

2. Hydraulic System

- Comprises the hydraulic pump, hydraulic cylinder, hoses, and valves.
- Essential for generating the force required to split logs.

3. Frame and Chassis

- The structural base that supports all other components.
- Includes the main frame, fenders, and support legs.

4. Wheels and Axles

- Provide mobility to the log splitter.
- Consist of the axle, wheels, and wheel bearings.

5. Splitting Wedge

- The pointed component that drives into the log to split it apart.
- Often made from hardened steel for durability.

6. Control Mechanisms

- Includes the lever and safety switch for operating the hydraulic system.
- Ensures safe and efficient operation.

Detailed Breakdown of Key Parts

Now that we have an overview of the main components, let's take a closer look at some of the critical parts involved in the operation of the Champion 34 Ton Log Splitter.

1. Engine Assembly

The engine assembly is vital for the log splitter's performance. Here are the

primary components:

- Air Filter: Prevents dirt and debris from entering the engine, ensuring optimal performance.
- Carburetor: Mixes air and fuel for combustion. Regular cleaning is essential for efficiency.
- Spark Plug: Ignites the air-fuel mixture. A worn spark plug can lead to starting issues.

2. Hydraulic System

The hydraulic system is what gives the log splitter its splitting power. Key parts include:

- Hydraulic Pump: Converts mechanical energy from the engine into hydraulic energy. Regular checks for leaks are essential.
- Hydraulic Cylinder: Houses the hydraulic fluid and creates the pressure needed to move the splitting wedge.
- Hoses and Fittings: Connect various components of the hydraulic system. Inspect for wear and tear regularly.

3. Splitting Wedge

The splitting wedge is crucial for effectively splitting the logs. Considerations include:

- Material: Usually made from hardened steel, ensuring longevity and effectiveness.
- Shape: The design impacts the splitting efficiency; a wider wedge can split larger logs more easily.

4. Control Mechanisms

Control mechanisms are vital for safe operation. They typically include:

- Lever: Engages the hydraulic system. Ensure it is functioning correctly for safe use.
- Safety Switch: Prevents accidental operation. Always check that it is operational before use.

Maintenance Tips for Champion 34 Ton Log

Splitter

To keep your log splitter running efficiently, regular maintenance is essential. Here are some maintenance tips:

- Regular Oil Changes: Change the engine oil after every 50 hours of use to ensure smooth operation.
- Inspect Hydraulic Fluid: Check the hydraulic fluid levels regularly and replace it if it appears dirty or contaminated.
- Clean the Air Filter: A clean air filter ensures optimal engine performance. Clean or replace it as needed.
- Sharpen the Wedge: A sharp splitting wedge is crucial for efficiency. Sharpen it regularly or replace it if it's worn out.

Common Issues and Troubleshooting

Even with regular maintenance, issues can arise. Here are some common problems and their solutions:

1. Engine Won't Start
 - Check the spark plug for wear.
 - Ensure the fuel is fresh and that the fuel lines are not clogged.
2. Hydraulic Fluid Leak
 - Inspect hoses and fittings for cracks or damage.
 - Replace any damaged components immediately.
3. Weak Splitting Power
 - Check the hydraulic fluid levels. Low fluid can reduce power.
 - Inspect the hydraulic pump for functionality.

Conclusion

Understanding the Champion 34 Ton Log Splitter Parts Diagram is essential for anyone looking to maintain or repair their log splitter effectively. Familiarity with the main components, their functions, and maintenance practices will ensure that your log splitter operates efficiently for years to come. Regular maintenance and careful attention to the parts diagram will help you diagnose issues quickly, ensuring you can tackle any log-splitting task with confidence. By taking care of your equipment, you can rely on it to handle even the toughest jobs in your wood yard or garden.

Frequently Asked Questions

What is a Champion 34 ton log splitter parts diagram used for?

A Champion 34 ton log splitter parts diagram is used to identify and locate the various components of the log splitter, aiding in maintenance, repairs, and assembly.

Where can I find a Champion 34 ton log splitter parts diagram?

You can find a parts diagram for the Champion 34 ton log splitter on the manufacturer's official website, in the user manual, or through authorized dealers.

What are the main components shown in the Champion 34 ton log splitter parts diagram?

The main components typically include the engine, hydraulic pump, cylinder, frame, wheels, and control levers.

How can I use the parts diagram to troubleshoot my Champion log splitter?

You can use the parts diagram to identify specific components that may be malfunctioning and to locate replacement parts for repairs.

Are there any common issues that the parts diagram helps to resolve?

Yes, common issues such as hydraulic leaks, engine problems, or operational failures can often be diagnosed using the parts diagram to pinpoint the faulty component.

Can I download the Champion 34 ton log splitter parts diagram?

Yes, many manufacturers provide downloadable PDF versions of parts diagrams on their websites for easy access and reference.

Is the parts diagram the same for all Champion log splitters?

No, the parts diagram may vary between different models of Champion log splitters, so it's important to ensure you have the correct diagram for your specific model.

Do I need special tools to work on parts identified in the diagram?

Yes, depending on the specific part and its installation, you may need specialized tools such as wrenches, sockets, or hydraulic tools to safely and effectively perform maintenance.

Find other PDF article:

<https://soc.up.edu.ph/10-plan/pdf?trackid=rTe21-9123&title=bwell-smart-scale-manual.pdf>

Champion 34 Ton Log Splitter Parts Diagram

Reddit - Dive into anything

Reddit is a network of communities where people can dive into their interests, hobbies and passions. There's a community for whatever you're interested in on Reddit.

Zillow Gone Wild - Reddit

H HOMEies!!! I have been lazy for starting this for a while but finally did today. Welcome to the official Zillow Gone Wild Reddit community. I hope this is a place we can share homes to talk ...

Is there a way to view images off the previous listing on Zillow ...

Apr 25, 2021 · Is there a way to view images off the previous listing on Zillow / Redfin / any real estate website? Hi there, So basically I'm looking at a house that was recently renovated in my ...

How to download my house's photos off Zillow? : r/Zillow - Reddit

Jul 24, 2022 · How to download my house's photos off Zillow? My husband and I bought a house earlier this year. As we go forward making changes to it, I really want to keep the old photos of ...

Looking to buy a home but don't know what site to use Redfin, ...

Jun 16, 2023 · Here's a quick run down. I'm looking to buy a single family home or townhouse in Florida I'm talking about Highlighting From Jupiter all the way down to Homestead. I just ...

Does anyone use Zillow's leases for their rental properties ... - Reddit

Does anyone use Zillow's leases for their rental properties? How about Zillow's online tenant payments? What is your opinion? Property Management

(US) has anyone used Zillow cash offer? : r/RealEstate - Reddit

Jul 29, 2021 · Zillow offered 379 (approximately 364 after fees and repairs) and open door offered 365 (344 after fees). What gives? This is a really competitive offer and above what the comps ...

Zillow (ShowingTime+) Listing Showcase : r/realtors - Reddit

I have Zillow emails set up from my regular email to see how certain things look as a consumer and I just received one of the "Listing Showcase" messages. I was extremely impressed with ...

Any recent experiences with Zillow Offers? : r/RealEstate - Reddit

