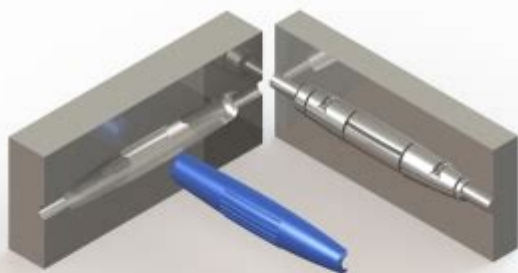


# Certified Solidworks Professional Advanced Preparation Material

## Certified SOLIDWORKS<sup>®</sup> Professional Advanced Preparation Material

Sheet Metal, Weldments, Surfacing,  
Mold Making and Drawing Tools

SOLIDWORKS<sup>®</sup> 2021



Paul Tran CSWE, CSWI



Better Textbooks. Lower Prices.  
[www.SDCpublications.com](http://www.SDCpublications.com)

Certified SolidWorks Professional Advanced Preparation Material is an essential resource for engineers and designers looking to validate their skills in using SolidWorks software at an advanced level. Achieving certification not only enhances professional credibility but also opens doors to career advancement opportunities. This article will provide a comprehensive guide to preparing for the Certified SolidWorks Professional (CSWP) exam, including study resources, exam structure, and tips to help you succeed.

## Understanding the Certified SolidWorks Professional Exam

The CSWP certification is a benchmark for SolidWorks users, indicating proficiency in advanced part modeling, assembly modeling, and drawing creation. The exam focuses on various areas of expertise and is designed to test your ability to apply SolidWorks tools and functionalities in practical scenarios.

## Exam Structure

The CSWP exam consists of multiple components, including:

1. Part Modeling: Candidates are required to demonstrate their ability to create complex parts using advanced features.
2. Assembly Modeling: This section evaluates the ability to assemble parts correctly and manage relationships between components.
3. Drawings: Candidates must showcase their skills in creating and annotating technical drawings based on the models they create during the exam.

The exam is typically timed, and candidates are expected to complete the tasks within a set time limit. Familiarity with the exam structure helps you manage your time effectively during the test.

## **Prerequisites for Certification**

Before taking the CSWP exam, it is recommended that candidates:

- Hold a Certified SolidWorks Associate (CSWA) certification.
- Have a solid understanding of SolidWorks features and functionalities.
- Have hands-on experience with the software, ideally working on real-world projects.

## **Preparing for the CSWP Exam**

Preparation is key to achieving success in the CSWP exam. Below are several methods and resources to help you prepare effectively.

## **Study Materials**

1. Official SolidWorks Training Courses:
  - Enroll in advanced SolidWorks courses offered by authorized training centers. These courses provide structured learning and hands-on practice.
2. SolidWorks Certification Preparation Guide:
  - SolidWorks provides an official guide that outlines the topics covered in the CSWP exam. This guide is an excellent starting point for identifying key areas of focus.
3. Online Tutorials and Videos:
  - Websites like YouTube and platforms like LinkedIn Learning offer free and paid video tutorials that cover advanced SolidWorks features.
4. Books and eBooks:
  - Consider reading books specifically written for SolidWorks certification preparation. Some popular titles include:
    - "SolidWorks 2021 Certification Exam Guide" by John S. McCauley
    - "SolidWorks 2021 for Engineers and Designers" by Prof. Sham Tickoo

## 5. Practice Exams:

- Taking practice exams can help you familiarize yourself with the format and types of questions you might encounter. Websites like MySolidWorks offer practice questions and simulation exams.

## Hands-on Practice

Practical experience is crucial. Here are some strategies to improve your skills:

- **Work on Real Projects:** Engage in projects that require advanced modeling techniques. This experience will not only aid in preparation but also enhance your problem-solving skills.
- **Join SolidWorks User Groups:** Connect with other SolidWorks users through forums and user groups. Sharing experiences and challenges can provide valuable insights.
- **Use the SolidWorks Help Resources:** The built-in help feature in SolidWorks is a great resource for understanding various tools and functionalities. Make it a habit to explore this feature while working on your models.

## Exam Strategies

Taking the CSWP exam can be challenging, but with effective strategies, you can improve your chances of passing. Here are some tips:

## Time Management

- **Practice with a Timer:** When practicing, set a timer to simulate the exam environment. This will help you develop a sense of timing for each section of the exam.
- **Prioritize Tasks:** Begin with the sections you are most comfortable with. This will help build confidence and momentum as you work through the exam.

## Understanding the Tools

- **Familiarize Yourself with Shortcuts:** Knowing keyboard shortcuts can significantly speed up your modeling process during the exam.
- **Explore Advanced Features:** Make sure you understand advanced features such as:
  - Configurations
  - Advanced assemblies
  - Simulation tools
  - Design tables

## Reviewing Your Work

- Double-check Dimensions and Constraints: In SolidWorks, accurate dimensions and constraints are critical. Always review your work before finalizing.
- Use the Check Tool: SolidWorks has a built-in check tool that can help you identify errors in your models before submission.

## Post-Exam Considerations

Once you have completed the CSWP exam, here are some things to consider:

### Certification Maintenance

- Stay Updated: SolidWorks releases new versions regularly, and it is important to stay up-to-date with the latest features and enhancements. Consider retaking the CSWP exam when new versions are released to maintain your certification.

### Leveraging Your Certification

- Update Your Resume: Include your CSWP certification in your resume and LinkedIn profile to highlight your advanced skills to potential employers.
- Seek Advanced Roles: With your CSWP certification, explore job opportunities that require advanced SolidWorks skills, such as design engineering, product development, and project management roles.

## Conclusion

In conclusion, preparing for the Certified SolidWorks Professional Advanced Preparation Material involves a combination of structured learning, practical experience, and strategic exam techniques. By utilizing the right resources, practicing diligently, and approaching the exam with a solid plan, you can enhance your chances of passing the CSWP exam. This certification can be a significant asset in your engineering career, proving your expertise in one of the industry's leading CAD software. Invest the time and effort now, and reap the benefits in your professional journey.

## Frequently Asked Questions

## **What is a Certified SolidWorks Professional (CSWP) Advanced certification?**

The Certified SolidWorks Professional Advanced certification is an advanced level certification that demonstrates a user's expertise in SolidWorks software, particularly in complex modeling, advanced assembly, and simulation techniques.

## **What topics are covered in the CSWP Advanced preparation material?**

The CSWP Advanced preparation material typically covers advanced solid modeling techniques, complex assemblies, advanced surface modeling, motion analysis, and simulation methods.

## **Where can I find reliable preparation material for the CSWP Advanced exam?**

Reliable preparation material for the CSWP Advanced exam can be found through official SolidWorks training resources, online courses, textbooks, and community forums dedicated to SolidWorks users.

## **How long should I study for the CSWP Advanced certification?**

The study duration for the CSWP Advanced certification can vary, but a focused preparation of 4 to 8 weeks, dedicating several hours each week to practice and study, is generally recommended.

## **Are there practice exams available for the CSWP Advanced certification?**

Yes, several online platforms and training providers offer practice exams and sample questions specifically designed for the CSWP Advanced certification to help candidates prepare.

## **What is the format of the CSWP Advanced exam?**

The CSWP Advanced exam consists of multiple practical scenarios where candidates are required to demonstrate their skills in SolidWorks by solving real-world engineering problems within a set time frame.

## **Can I take the CSWP Advanced exam online?**

Yes, the CSWP Advanced exam can be taken online through authorized testing centers or remotely, depending on the options provided by the certification body.

## **What are the benefits of obtaining the CSWP Advanced**

## certification?

Obtaining the CSWP Advanced certification enhances professional credibility, demonstrates advanced technical skills, opens up job opportunities, and can lead to higher earning potential in the CAD industry.

Find other PDF article:

<https://soc.up.edu.ph/02-word/Book?trackid=YZW53-8499&title=3-days-detox-diet-plan.pdf>

## Certified Solidworks Professional Advanced Preparation Material

International Data Analyst - 00

CDA Certified Data Analyst “CDA” International Data Analyst ...

International CSCP CPIM CPSM ...

CSCP: Certified Supply Chain professionals, International CPSM, CPIM ...

Certified Robustness / Verifiable Robustness - 00

Certified robustness condition Cohen et al. 19  $\underline{\{p_A\}} \geq \overline{\{p_B\}}$  robust region robustness ...

International PMP PMP - 00

Jul 15, 2024 · PMP International PMI 200 ...

International - 00

[1] ...

International CPP (certified protection professional) ... - 00

CPP Certified Protection Professional ASIS CPP 800 200 ...

Adobe Certified Expert - 00

Adobe Certified Expert An Adobe Certified Expert (ACE) is a person who has demonstrated proficiency with Adobe Systems software products by passing ...

International CISP CISSP - 00

Certified Information Security Professional (CISP) CISP (Certified Information Security Professional) ...

International CSPM - 00



[Back to Home](#)