

Charlie And The Chocolate Factory Worksheet

Charlie & The Chocolate Factory

The Instructions

Part 3 & 4 to be done simultaneously!!! (STOP & CHECK: ex. 5, 6 after 49 minutes)

Exercise 5: Decide if the instructions are TRUE (T) or FALSE (F).

Correct the False ones.



All the instructions are on the Golden Ticket.



5 children will be Willy Wonka's guests for one whole week.



Each child will get a big box full of chocolate.



Children must show up on February the 1st.



They can bring one friend with them.



The Oompa Loompas

Exercise 6: Underline the correct answer:

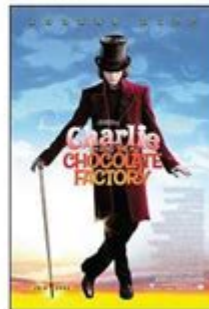
1. The Oompa Loompas come from Loompaland / Loompacity.
2. They are tall / short people.
3. They live in a wonderful / terrible country.
4. It is a dangerous jungle / desert.
5. The Oompa Loompas eat snails / caterpillars.
6. The Oompa Loompas live in tree houses / underground.
7. They love cocoa beans / chocolate more than anything.
8. They are wonderful / terrible workers.



Willy Wonka's Childhood

Exercise 7: Complete the sentences with **ONE** word:

1. Which holiday does Willy Wonka recall in his first memory?
_____.
2. Willy Wonka's father was city's most famous _____.
3. His name is _____ Wonka.
4. Willy Wonka's father hates all kinds of _____.
5. Willy Wonka's first candy was a _____.
6. Willy Wonka wants to run away to _____.



Charlie and the Chocolate Factory worksheet is an essential tool for educators and parents alike, designed to enhance comprehension and engagement for students reading Roald Dahl's beloved novel. This worksheet can serve as a comprehensive study guide, helping learners delve deeper into the themes, characters, and moral lessons of the story. In this article, we will explore the various components of a Charlie and the Chocolate Factory worksheet, discuss its benefits, and provide examples of activities and questions that can be included to maximize student learning.

Understanding the Story

Overview of Charlie and the Chocolate Factory

Roald Dahl's *Charlie and the Chocolate Factory* tells the enchanting story of a young boy named Charlie Bucket, who lives in poverty with his family near Willy Wonka's magical chocolate factory. The narrative takes a turn when Willy Wonka announces a contest in which five lucky children will receive golden tickets hidden in chocolate bars, granting them a tour of his factory. Each child's unique personality and flaws become apparent throughout the tour, leading to lessons about greed, pride, and humility.

Key Themes

The worksheet can help students explore several critical themes in the book, including:

1. The Consequences of Bad Behavior: Each child represents different negative traits, and their fates serve as cautionary tales.
2. The Importance of Family: Charlie's love for his family contrasts with the other children's self-serving attitudes.
3. Imagination and Creativity: Willy Wonka embodies the spirit of creativity, showcasing how imagination can lead to extraordinary outcomes.
4. Social Class and Wealth: The stark differences between Charlie's life and the other children's affluent backgrounds highlight societal inequalities.

Components of a Charlie and the Chocolate Factory Worksheet

A well-structured worksheet should include varied activities that cater to different learning styles. Here are some essential components to consider:

Character Analysis

Students can explore the main characters through:

- Character Profiles: Create a table for students to fill in details about each character, including their traits, motivations, and the lessons they learn.
- Comparative Analysis: Ask students to compare and contrast Charlie with other children, discussing how their backgrounds influence their actions.

Comprehension Questions

Incorporating comprehension questions ensures that students grasp the plot and themes. Examples of questions include:

1. What motivates Charlie to seek a golden ticket?
2. Describe the different reactions of the children when they enter the factory.
3. How does Willy Wonka's character contribute to the story's moral?

Creative Activities

Engaging students through creative activities can deepen their understanding of the story. Suggestions include:

- Art Projects: Have students create their version of a room in the chocolate factory, illustrating their imagination.
- Role Play: Assign students characters and have them act out scenes from the book, focusing on character motivations and emotions.

Benefits of Using a Charlie and the Chocolate Factory Worksheet

Utilizing a Charlie and the Chocolate Factory worksheet can provide several benefits for both educators and students:

Enhanced Understanding

Worksheets encourage students to think critically about the text. By answering questions and completing activities, students can better comprehend the underlying messages of the story.

Improved Engagement

Creative tasks and interactive activities make learning fun. Engaged students are more likely to retain information and develop a love for reading.

Development of Critical Thinking Skills

Through character analysis and thematic exploration, students learn to think

critically about literature. They can draw connections between the characters' experiences and real-life situations.

Encouragement of Collaboration

Group activities, such as role-playing or collaborative art projects, foster teamwork and communication skills among students.

Example Activities for the Worksheet

To make the Charlie and the Chocolate Factory worksheet more interactive, consider incorporating the following activities:

1. Vocabulary Building

Create a vocabulary section where students can learn and define words from the text, such as "confectionery," "whimsical," and "entrepreneur." This can include:

- Definitions
- Example sentences
- Synonyms and antonyms

2. Personal Reflections

Encourage students to reflect on the story by asking them to write a short essay or paragraph on:

- Which character they relate to the most and why.
- A time when they had to confront a moral dilemma, similar to those faced by the characters.

3. Thematic Discussion Prompts

Include prompts that facilitate discussions in the classroom. For example:

- Discuss how Willy Wonka's factory represents a place of both wonder and danger.
- Explore the concept of "fairness" as depicted in the book. Do you think all children were treated fairly? Why or why not?

4. Creative Writing Exercise

Ask students to write an alternate ending to the story. They can consider how the story would change if one of the other children had won the golden ticket instead of Charlie.

5. Visual Storytelling

Have students create a comic strip or storyboard that summarizes key events in the plot. This can help them visualize the narrative flow while practicing their summarization skills.

Conclusion

Incorporating a Charlie and the Chocolate Factory worksheet into the classroom can enhance students' understanding of this classic novel while making learning enjoyable. By engaging with character analysis, comprehension questions, and creative activities, students are encouraged to think critically and creatively about the text. Ultimately, this worksheet serves not only as an educational resource but also as a gateway to explore broader themes that resonate in their lives and society. By embracing the lessons from Charlie's journey and the whimsical world of Willy Wonka, students can gain valuable insights into morality, creativity, and the importance of family.

Frequently Asked Questions

What are some key themes explored in the 'Charlie and the Chocolate Factory' worksheet?

Key themes include the importance of family, the consequences of greed and entitlement, and the value of kindness and humility.

How can teachers effectively use the 'Charlie and the Chocolate Factory' worksheet in their lessons?

Teachers can use the worksheet to facilitate discussions, encourage creative writing, and conduct character analysis, enhancing comprehension and critical thinking.

What types of activities are typically included in a

'Charlie and the Chocolate Factory' worksheet?

Activities may include comprehension questions, vocabulary exercises, character mapping, and creative prompts related to the story.

Are there any specific learning objectives associated with using the 'Charlie and the Chocolate Factory' worksheet?

Learning objectives often include improving reading comprehension, analyzing character development, and understanding literary themes.

How can parents support their children with the 'Charlie and the Chocolate Factory' worksheet at home?

Parents can help by discussing the story, encouraging their children to express their thoughts in writing, and providing additional resources related to the book.

What age group is the 'Charlie and the Chocolate Factory' worksheet suitable for?

The worksheet is typically suitable for elementary to middle school students, around ages 7 to 12, depending on their reading level.

Find other PDF article:

<https://soc.up.edu.ph/01-text/pdf?docid=sWj94-1566&title=1cm-by-1cm-graph-paper.pdf>

[Charlie And The Chocolate Factory Worksheet](#)

Charlie -

Charlie Charlie 1 " " CHARLES ...

Charlie Puth -

Charlie Puth S Music 2010 12 2 The Otto Tunes 7 19 Charlie Puth 1991 12 2

charley charlie -

Charley Charlie Charley Charles " " ...

Charlie Puth 2025 ...

Charlie Puth 2025 12월 2일 12:20 ...

Charlie Puth 2025 12월 2일 12:20

Charlie Puth 1991년 12월 2일 ...

charlie puth 2025 12월 2일 12:20

charlie puth 1991년 12월 2일 ...

“Charlie”-Charlie Puth 2025 12월 2일 12:20

Aug 9, 2024 · “Charlie”-Charlie Puth 1991년 12월 2일 ...

No.30—Charlie Red - 2025 12월 2일 12:20

Oct 4, 2024 · No.30—Charlie Red Charlie Red, 1996년 4월 17일 ...

River—Charlie Puth 2025 12월 2일 12:20

Apr 6, 2024 · River—Charlie Puth Charlie Puth River Part I: river, don't hide, ...

charles 2025 12월 2일 12:20

Charlie is a given name in English-speaking countries, usually a nickname for Charles. nickname Rick Dick Richard nickname Bill Will William ...

Charlie 2025 12월 2일 12:20

Charlie 1 CHARLES ...

Charlie Puth 2025 12월 2일 12:20

Charlie Puth S Music 2010년 12월 2일 ...

charley 2025 12월 2일 12:20

Charley Charlie Charley Charles “Charlie” ...

Charlie Puth 2025 12월 2일 12:20

Charlie Puth 2025 12월 2일 ...

Charlie Puth 2025 12월 2일 12:20

Charlie Puth 1991년 12월 2일 ...

Unlock the magic of "Charlie and the Chocolate Factory" with our engaging worksheet! Perfect for educators and fans. Discover how it enhances learning today!

[Back to Home](#)