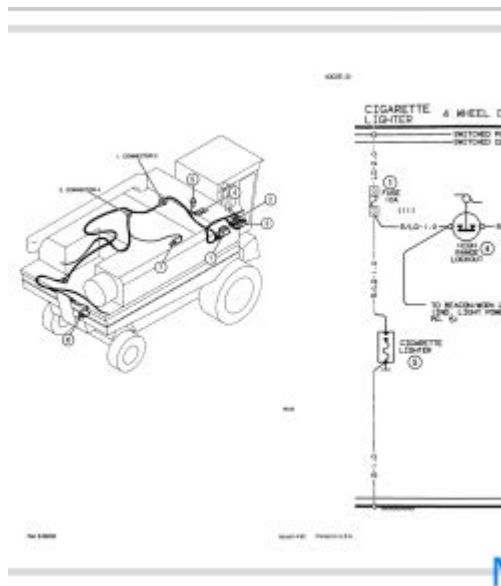


Case Ih 1660 Combine Service Manual



Case IH 1660 combine service manual is an essential resource for farmers and technicians working with this iconic agricultural machinery. This manual provides detailed information about maintenance, troubleshooting, and repairs for the Case IH 1660 combine, which is widely used for harvesting grains like corn, soybeans, and wheat. Understanding how to effectively utilize this service manual can significantly enhance the performance and longevity of your combine, ultimately leading to increased productivity on your farm.

Overview of the Case IH 1660 Combine

The Case IH 1660 combine harvester is a part of the Case IH Axial-Flow series and is renowned for its efficient grain handling capabilities. It is particularly favored for its:

- High throughput and grain quality
- Simple and reliable design
- Versatility across different crops
- Ease of maintenance

Understanding the features and capabilities of the Case IH 1660 helps users appreciate the importance of regular maintenance, which is where the service manual comes into play.

Importance of the Service Manual

The **Case IH 1660 combine service manual** serves several critical purposes:

1. Comprehensive Maintenance Guidelines

The manual outlines routine maintenance tasks that are essential for the optimal performance of the combine. Key maintenance tasks include:

1. Regular oil changes and filter replacements
2. Inspecting and adjusting belts and chains
3. Cleaning and servicing the air filter
4. Checking and calibrating the header and feeder house

Following these guidelines helps prevent breakdowns during the harvesting season and ensures that the combine operates efficiently.

2. Troubleshooting Assistance

The service manual is an invaluable tool for diagnosing issues that may arise during operation. It provides:

- Step-by-step troubleshooting procedures
- Common problems and their solutions
- Diagnostic codes for electronic systems

Having access to this information allows operators to quickly identify and rectify issues, minimizing downtime and enhancing productivity.

3. Repair Procedures

In the event that repairs are needed, the service manual outlines detailed procedures for fixing various components of the combine. This includes:

1. Disassembly and reassembly instructions
2. Torque specifications for bolts and other fasteners
3. Parts diagrams and schematics for easy identification of components

These detailed instructions enable both experienced technicians and novice operators to carry out repairs confidently and correctly.

Key Sections of the Service Manual

The **Case IH 1660 combine service manual** is typically divided into several important sections, each focusing on different aspects of the combine. Here are some key sections you can expect to find:

1. Safety Information

This section emphasizes the importance of safety when operating and servicing the combine. It includes:

- General safety precautions
- Personal protective equipment recommendations
- Emergency procedures

Understanding and adhering to safety guidelines is crucial to prevent accidents and injuries while working with heavy machinery.

2. Specifications

This part of the manual provides detailed specifications for the Case IH 1660 combine, including:

1. Engine specifications
2. Dimensions and weight
3. Fuel capacity and consumption rates

4. Harvesting features and capacities

Knowledge of the specifications helps users make informed decisions about usage and maintenance.

3. Maintenance Schedules

Regular maintenance is vital for ensuring the longevity of the combine. The manual outlines recommended maintenance schedules, detailing:

- Daily checks
- Weekly and monthly maintenance tasks
- Annual service and inspections

Following these schedules can help prevent costly repairs and extend the life of the combine.

4. Electrical System

The electrical system of the Case IH 1660 is critical for its operation. This section includes:

1. Wiring diagrams
2. Information on fuses and relays
3. Troubleshooting electrical issues

Understanding the electrical system is essential for diagnosing and fixing problems related to the combine's operation.

How to Obtain the Service Manual

Acquiring the **Case IH 1660 combine service manual** is straightforward. Options include:

- Official Case IH dealerships
- Online retailers and marketplaces
- Case IH's official website for downloadable manuals
- Second-hand bookstores or agricultural equipment suppliers

When purchasing, ensure that you get the latest version to include all updates and changes that may have been made since the original release.

Conclusion

In summary, the **Case IH 1660 combine service manual** is an indispensable tool for anyone involved in operating or maintaining this combine. By providing detailed information on maintenance, troubleshooting, and repair procedures, the manual empowers users to keep their equipment in peak condition. Regularly consulting the service manual not only enhances operational efficiency but also contributes to the safety and longevity of the machine. Whether you are a seasoned farmer or a new operator, understanding and utilizing this manual will undoubtedly improve your harvesting experience and productivity.

Frequently Asked Questions

What is the purpose of the Case IH 1660 combine service manual?

The service manual provides detailed instructions for maintenance, troubleshooting, and repair of the Case IH 1660 combine, ensuring optimal performance and longevity.

Where can I find a digital copy of the Case IH 1660 combine service manual?

Digital copies of the service manual can often be found on the official Case IH website, through authorized dealers, or on various agricultural equipment forums and websites.

What are some common issues covered in the Case IH 1660 combine service manual?

Common issues include engine performance problems, hydraulic system failures, grain handling system troubles, and electrical system malfunctions.

Is the Case IH 1660 combine service manual suitable for DIY repairs?

Yes, the service manual is designed for both professional mechanics and DIY enthusiasts, providing step-by-step instructions that are easy to follow.

Does the Case IH 1660 combine service manual include parts diagrams?

Yes, the service manual typically includes detailed parts diagrams that help in identifying components and understanding assembly/disassembly procedures.

How often should I refer to the service manual for my Case IH 1660 combine?

It's recommended to refer to the service manual during routine maintenance, troubleshooting, and whenever you notice a performance issue with the combine.

Can I use the Case IH 1660 combine service manual for other models?

While some information may overlap, the service manual is specifically designed for the Case IH 1660 combine, so it's best to use the manual for that exact model to ensure accuracy.

What maintenance schedules are outlined in the Case IH 1660 combine service manual?

The service manual outlines maintenance schedules for engine oil changes, filter replacements, belt inspections, and general cleaning procedures to keep the combine in top condition.

Find other PDF article:

<https://soc.up.edu.ph/13-note/pdf?trackid=MVR54-9650&title=chemistry-structure-and-properties-nivaldo-j-tro.pdf>

[Case Ih 1660 Combine Service Manual](#)

Tracteurs - Case IH

Case IH propose une gamme complète de tracteurs pour toutes les utilisations. Découvrez tous les tracteurs.

Traktoren & landwirtschaftliche Geräte | Case IH

Besuchen Sie die Website von Case IH und entdecken Sie alle unsere Produkte: Traktoren, Erntemaschinen, Ballenpressen, Lader und vieles mehr.

Ciągniki i sprzęt rolniczy | CASE IH

Odwiedź stronę internetową Case IH i odkryj wszystkie nasze produkty: ciągniki, sprzęt żniwny, prasy, ładowarki i wiele innych.

Harvesting, Planting, & Farming Equipment - Canada | Case IH

Case IH is a global leader in agriculture and farm equipment. Compare tractors, planting, harvesting, and many other products on CASE IH website.

CASE IH - Choose your market

Explore Case IH's global website to choose your country and discover agricultural machinery, equipment, and services tailored to your needs.

Traktoren - Case IH

De Case IH Quantum-traktoren van 80-120 pk krijgen in 2025 nieuwe functies die extra mogelijkheden en prestaties bieden voor deze gespecialiseerde modellen. De upgrades zijn ...

Case IH Brasil | Máquinas Agrícolas e Tecnologia para o Campo

Explore a Case IH Brasil, líder em máquinas agrícolas. Descubra tratores, colheitadeiras, pulverizadores, plantadeiras e mais, com tecnologia de ponta para aumentar sua ...

Harvesting, Planting, & Farming Equipment | Case IH

Case IH is a global leader in agriculture and farm equipment. Compare tractors, planting, harvesting, and many other products on CASE IH website.

Genuine Parts | Parts & Services | Case IH

With the range of Genuine Parts, Case IH is committed to optimizing your performance: batteries, belts, bearings, engine air filters, fuel filters, seat covers & floor mats and much more.

Tractors & Farm Equipment | CASE IH

Visit Case IH website and discover all our products: Tractors, Harvesting equipment, Baler, Loaders and much more.

Tracteurs - Case IH

Case IH propose une gamme complète de tracteurs pour toutes les utilisations. Découvrez tous les tracteurs.

Traktoren & landwirtschaftliche Geräte | Case IH

Besuchen Sie die Website von Case IH und entdecken Sie alle unsere Produkte: Traktoren, Erntemaschinen, Ballenpressen, Lader und vieles mehr.

Ciągniki i sprzęt rolniczy | CASE IH

Odwiedź stronę internetową Case IH i odkryj wszystkie nasze produkty: ciągniki, sprzęt żniwny, prasy, ładowarki i wiele innych.

Harvesting, Planting, & Farming Equipment - Canada | Case IH

Case IH is a global leader in agriculture and farm equipment. Compare tractors, planting, harvesting, and many other products on CASE IH website.

CASE IH - Choose your market

Explore Case IH's global website to choose your country and discover agricultural machinery, equipment, and services tailored to your needs.

Tractoren - Case IH

De Case IH Quantum-tractoren van 80-120 pk krijgen in 2025 nieuwe functies die extra mogelijkheden en prestaties bieden voor deze gespecialiseerde modellen. De upgrades zijn ...

Case IH Brasil | Máquinas Agrícolas e Tecnologia para o Campo

Explore a Case IH Brasil, líder em máquinas agrícolas. Descubra tratores, colheitadeiras, pulverizadores, plantadeiras e mais, com tecnologia de ponta para aumentar sua ...

Harvesting, Planting, & Farming Equipment | Case IH

Case IH is a global leader in agriculture and farm equipment. Compare tractors, planting, harvesting, and many other products on CASE IH website.

Genuine Parts | Parts & Services | Case IH

With the range of Genuine Parts, Case IH is committed to optimizing your performance: batteries, belts, bearings, engine air filters, fuel filters, seat covers & floor mats and much more.

Tractors & Farm Equipment | CASE IH

Visit Case IH website and discover all our products: Tractors, Harvesting equipment, Baler, Loaders and much more.

Unlock the full potential of your Case IH 1660 combine with our comprehensive service manual. Discover how to maintain and troubleshoot effectively. Learn more!

[Back to Home](#)