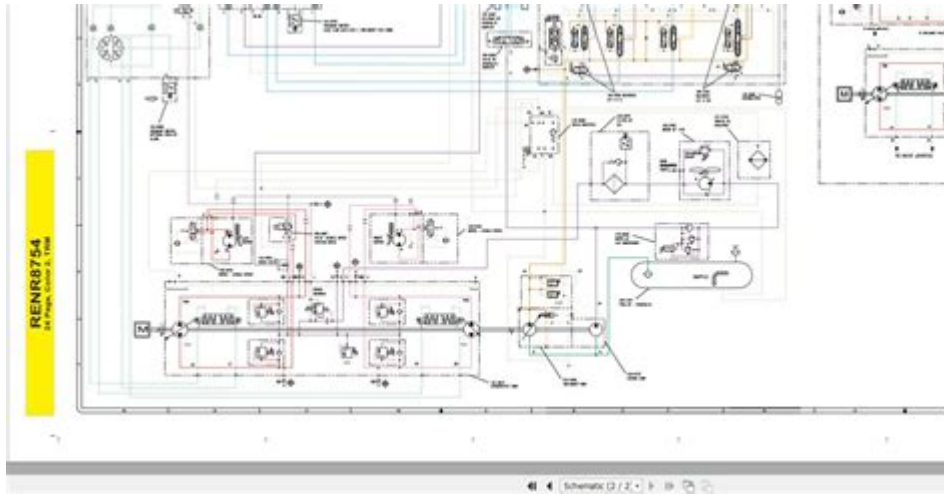


Cat 268b Skid Steer Loader Operators Manual



Cat 268B Skid Steer Loader Operators Manual is an essential guide for anyone who owns or operates this powerful piece of machinery. The Cat 268B skid steer loader is known for its versatility, reliability, and efficiency in various construction and landscaping tasks. Whether you are a seasoned operator or new to the world of skid steers, having a comprehensive understanding of the operator's manual is crucial for maximizing productivity and ensuring safety on the job site. This article will delve into the various aspects of the Cat 268B skid steer loader operator's manual, including its features, maintenance, and operation tips.

Overview of the Cat 268B Skid Steer Loader

The Cat 268B skid steer loader is designed to perform in a wide range of applications, from grading and landscaping to material handling and demolition. Its compact design allows it to operate in tight spaces while still providing impressive lifting capabilities. Here are some key features of the Cat 268B:

- **Powerful Engine:** Equipped with a robust engine that provides high torque and horsepower, making it suitable for heavy-duty tasks.
- **Exceptional Lift Capacity:** The 268B can lift significant loads, making it effective for transporting materials.
- **Versatile Attachments:** Compatible with a variety of attachments, such as buckets, forks, and augers, enhancing its utility.
- **Operator Comfort:** Designed with an ergonomic cab, providing comfort during long work hours.

Importance of the Operators Manual

The operators manual for the Cat 268B skid steer loader is not just a collection of instructions; it is a vital resource that ensures the safe and efficient use of the machine. Here are some reasons why the operator's manual is essential:

- **Safety Guidelines:** The manual outlines critical safety information that operators must know to prevent accidents and injuries.
- **Operational Instructions:** Detailed instructions on how to operate the machine safely and effectively.
- **Maintenance Recommendations:** Information on routine maintenance tasks that keep the skid steer in optimal working condition.
- **Troubleshooting Tips:** Guidance on how to identify and resolve common issues that may arise during operation.

Understanding Safety Features

One of the primary focuses of the Cat 268B skid steer loader operators manual is safety. Operators must be aware of the following safety features:

- **Rollover Protective Structure (ROPS):** Designed to protect the operator in case of a rollover.
- **Falling Object Protective Structure (FOPS):** Protects the operator from falling debris.
- **Emergency Shut-Off:** A quick-access shut-off switch that can immediately stop the engine in emergencies.

Operating the Cat 268B Skid Steer Loader

To operate the Cat 268B safely and efficiently, operators should follow the guidelines provided in the

manual. Here's a step-by-step guide on how to get started:

Pre-Operation Checks

Before starting the machine, it's crucial to perform a series of pre-operation checks:

1. **Inspect the Machine:** Check for any visible signs of wear or damage, including hydraulic leaks and tire pressure.
2. **Fluid Levels:** Ensure that engine oil, hydraulic fluid, and coolant are at appropriate levels.
3. **Functionality of Safety Features:** Test the emergency shut-off and ensure that ROPS and FOPS are intact.

Starting the Machine

Once pre-operation checks are complete, follow these steps to start the machine:

1. Sit in the operator's seat and fasten your seatbelt.
2. Ensure that the controls are in the neutral position.
3. Turn the ignition key to start the engine.
4. Allow the engine to idle for a few minutes before engaging the hydraulics.

Operating Controls

The Cat 268B features intuitive controls that allow operators to maneuver the machine with precision. Familiarize yourself with:

- **Steering Levers:** Control the direction of the skid steer.

- **Hydraulic Control Joystick:** Operates the loader arms and attachments.
- **Throttle Control:** Adjusts engine speed according to the workload.

Maintenance Tips for the Cat 268B

Regular maintenance is essential to keep the Cat 268B skid steer loader running smoothly and to prolong its lifespan. The operator's manual provides a maintenance schedule, but here are some general maintenance tips:

Daily Maintenance Tasks

1. Check fluid levels (engine oil, hydraulic fluid, and coolant).
2. Inspect the tires for wear and proper inflation.
3. Clean the air filter and inspect the battery connections.

Weekly Maintenance Tasks

1. Grease all lubrication points.
2. Inspect the belts and hoses for signs of wear.
3. Check the operation of safety features.

Monthly Maintenance Tasks

1. Change engine oil and replace the oil filter.

2. Check the hydraulic system for leaks and perform a hydraulic filter change.
3. Inspect the undercarriage and clean as necessary.

Troubleshooting Common Issues

Even with proper maintenance, operators may encounter issues while using the Cat 268B. The operator's manual includes troubleshooting tips for common problems, such as:

- **Engine Won't Start:** Check the battery connections, fuel levels, and ignition switch.
- **Hydraulic System Issues:** Inspect for leaks and ensure that hydraulic fluid is at the correct level.
- **Unusual Noises:** Look for loose components and check fluid levels.

Conclusion

In summary, the **Cat 268B skid steer loader operators manual** is an indispensable resource for operators seeking to maximize the performance and safety of their machine. By understanding the features, following operational guidelines, and adhering to maintenance schedules, operators can ensure that their Cat 268B remains reliable and efficient for years to come. Always consult the operator's manual for specific instructions and recommendations tailored to your machine.

Frequently Asked Questions

Where can I find the Cat 268B skid steer loader operators manual?

You can find the Cat 268B skid steer loader operators manual on the official Caterpillar website, in the support section, or through authorized Caterpillar dealers.

What are the key maintenance tips outlined in the Cat 268B skid steer

loader operators manual?

The key maintenance tips include regular checks on the hydraulic fluid levels, engine oil changes, air filter inspections, and ensuring the tracks or wheels are in good condition to maintain optimal performance.

Does the Cat 268B skid steer loader operators manual provide troubleshooting guidelines?

Yes, the operators manual includes troubleshooting guidelines for common issues such as engine starting problems, hydraulic performance issues, and electrical faults.

Can I download the Cat 268B skid steer loader operators manual in PDF format?

Yes, the Cat 268B skid steer loader operators manual can often be downloaded in PDF format from the Caterpillar website or through various equipment documentation websites.

What safety precautions are mentioned in the Cat 268B skid steer loader operators manual?

The operators manual emphasizes safety precautions such as wearing appropriate personal protective equipment (PPE), understanding the machine's controls before operation, and ensuring the work area is clear of obstacles and bystanders.

Find other PDF article:

<https://soc.up.edu.ph/42-scope/Book?dataid=mJp35-2866&title=music-and-social-studies-lesson-plan.pdf>

Cat 268b Skid Steer Loader Operators Manual

r/RedCatHoldings - Reddit

r/RedCatHoldings: This is a community for people to talk about the stock RCAT. There is a small following on stocktwits but I felt it was time to...

Cat - Reddit

Welcome to r/cat, the subreddit for anything cat related! ☺^•☺•^☺

Reddit - Dive into anything

Reddit is a network of communities where people can dive into their interests, hobbies and passions. There's a community for whatever you're interested in on Reddit.

What It's Like Using a Cat S22 for Nearly Two Years : ...

I've been using the Cat S22 as my daily driver for just under two years. I thought it might be helpful to share my experience because others ask about the Cat S22 here quite a bit. ...

[r/CatGirlNSFW - Reddit](#)

r/CatGirlNSFW: A subreddit dedicated to posts about Cat-Girls both real and animated.

[Medicine Cat Guidebook - LONG. POST. : r/WarriorCats - Reddit](#)

May 24, 2023 · Once cat wakens provide painkilling and shock prevention herbs (described below) Recovery anywhere from 2 weeks to 2 moons, depending on the cat Leg removal: ...

[CAT-форум • Главная страница](#)

Cat-forum mauforum.ru :: Поговорим о кошках. Интернет-конференция, посвященная кошкам. Принимают участие как любители кошек, так и профессионалы - фелинологи, ...

Any mods? : r/ClanGen - Reddit

Apr 14, 2024 · Also adds the complete genetic code in a cat's history tab. It's fun discovering new things when you've been playing vanilla clangen for a while. I love Moss mod, too, which ...

[The Paw Print Calendar : r/Pets - Reddit](#)

The company is "The Paw Print" <https://thepawprint.store> It feels a little scammy saying the march 2025 cat looks like a google photo, and the misspelling of "aristocats" (FYI, my cat is ...

man what can I say -

"What can i say Mamba out" "What can i say Mamba out" ...

r/RedCatHoldings - Reddit

r/RedCatHoldings: This is a community for people to talk about the stock RCAT. There is a small following on stocktwits but I felt it was ...

Cat - Reddit

Welcome to r/cat, the subreddit for anything cat related! ^••^

[Reddit - Dive into anything](#)

Reddit is a network of communities where people can dive into their interests, hobbies and passions. There's a community for whatever you're interested in on Reddit.

What It's Like Using a Cat S22 for Nearly Two Years : r/dumbphones

I've been using the Cat S22 as my daily driver for just under two years. I thought it might be helpful to share my experience because others ask about the Cat S22 here quite a bit. Anyway, ...

[r/CatGirlNSFW - Reddit](#)

r/CatGirlNSFW: A subreddit dedicated to posts about Cat-Girls both real and animated.

Unlock the full potential of your Cat 268B skid steer loader with our comprehensive operators manual. Learn more about maintenance

[Back to Home](#)