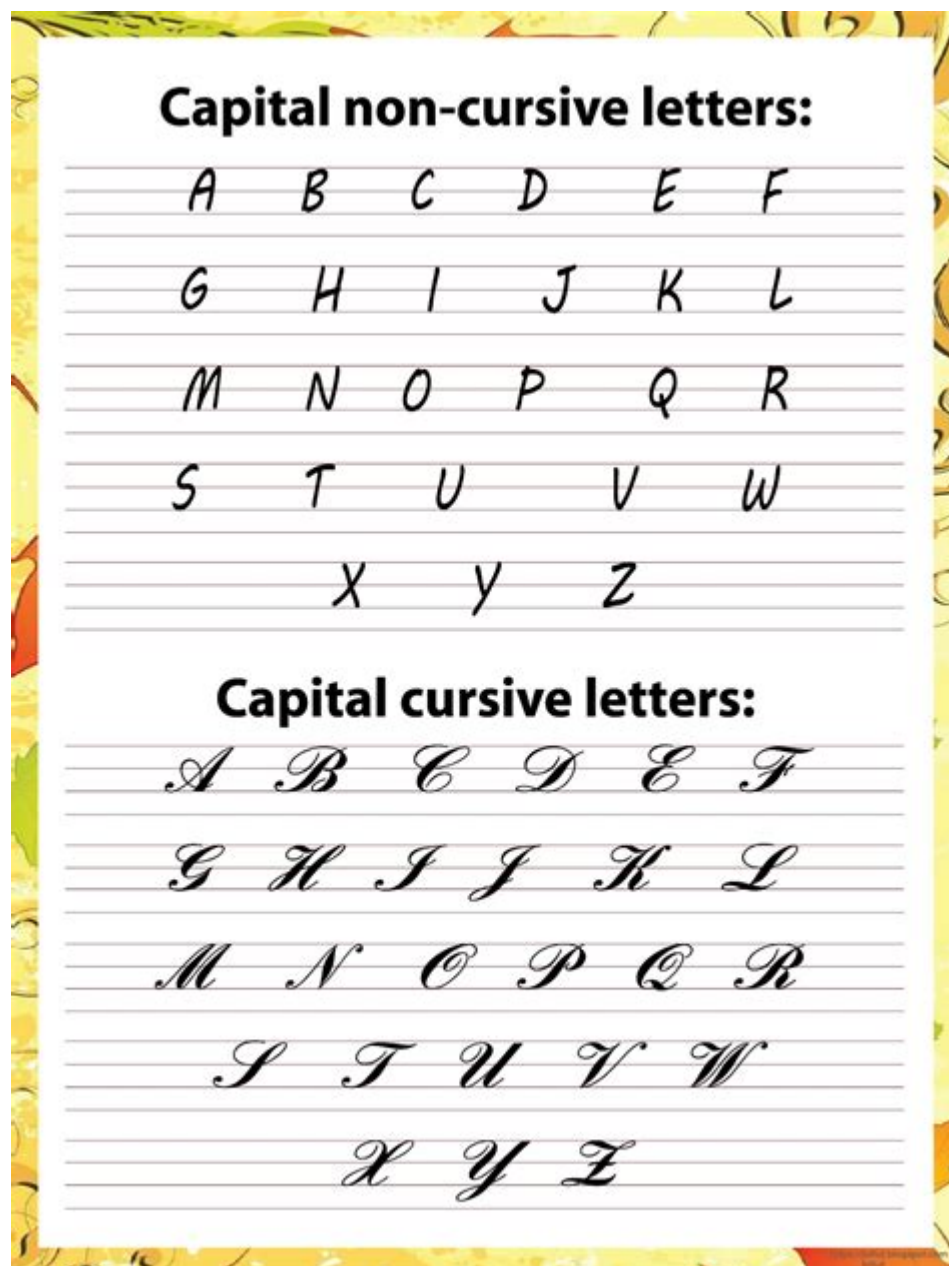


Capital Letter A In Cursive



Understanding the Capital Letter A in Cursive

The capital letter A in cursive is one of the foundational elements of cursive writing, often taught to children as they begin to master the art of handwriting. Cursive writing, characterized by its flowing and connected letters, emphasizes elegance and speed. The capital letter A stands out due to its unique shape, which can vary slightly based on different cursive styles. In this article, we will explore the characteristics, significance, and techniques for mastering the cursive capital letter A.

Characteristics of the Cursive Capital Letter A

The cursive capital letter A has distinct features that differentiate it from its print counterpart. Understanding these characteristics is essential for anyone looking to improve their cursive writing skills.

Shape and Structure

The cursive capital A is typically characterized by the following features:

1. **Rounded Top:** The top of the letter is usually rounded, creating a smooth transition from the beginning of the letter to its peak.
2. **Diagonal Strokes:** The sides of the letter extend downward at an angle, creating a triangular shape. These diagonal strokes are slightly curved and connect seamlessly to the next letter if written in a word.
3. **Loop:** There is often a loop at the bottom of the letter, which helps in connecting it to the following letter in cursive writing.

Variations in Cursive Styles

While the basic form of the cursive capital letter A remains consistent, different cursive styles may introduce subtle variations. Some common styles include:

- **Standard Cursive:** The most commonly taught style in schools, featuring a smooth and rounded letter with clear connections to adjacent letters.
- **Italic Cursive:** This style is slightly slanted and may have a more pronounced loop at the bottom of the letter.
- **Fancy Cursive:** Often used for decorative purposes, this style may include additional flourishes and embellishments.

Significance of the Capital Letter A in Cursive Writing

The capital letter A holds a special place in cursive writing for several reasons:

Foundational Learning

The cursive capital letter A is often one of the first letters taught to beginners. Its simple yet distinctive shape allows students to practice essential cursive techniques, such as maintaining fluidity and controlling pen pressure.

Personal Expression

Cursive writing is often associated with personal expression. The way individuals form their letters can reflect their personality and style. Mastering the cursive capital letter A can enhance one's overall handwriting, making it more aesthetically pleasing and unique.

Practical Applications

Cursive writing has practical applications in various contexts, including:

- Personal Correspondence: Letters, thank-you notes, and invitations often benefit from the elegance of cursive writing.
- Artistic Endeavors: Calligraphy and graphic design frequently use cursive lettering for a more sophisticated look.
- Formal Signatures: Many people choose to incorporate cursive writing into their signatures, making it a vital skill for personal branding.

Techniques for Mastering the Cursive Capital Letter A

To improve your cursive writing skills and master the capital letter A, consider the following techniques and practice methods:

1. Proper Grip and Posture

Before diving into writing, ensure you have the right grip on your pen or pencil. Your fingers should be relaxed, and the pen should rest comfortably between them. Additionally, maintain an upright posture to facilitate fluid movement.

2. Slow Practice

Start by practicing the letter A slowly. Focus on the following steps:

- Begin at the baseline, making a loop upwards to create the rounded top.
- Bring your pen down diagonally to the left and then to the right to form the sides of the letter.
- Finish with a loop at the bottom, connecting it smoothly to the next letter.

3. Use Guidelines

Using lined paper can help maintain consistent size and proportion. You can also create a set of guidelines to practice the height and width of the letter A:

- Top Line: The highest point of the letter should touch the top line.
- Middle Line: The bottom of the letter's loop should sit on the middle line.
- Baseline: Ensure that the pointed ends of the letter touch the baseline.

4. Repetition and Drills

Regular practice is key to mastering any writing technique. Set aside time each day to practice writing the cursive capital letter A. Here are some drills you can use:

- Write the letter in isolation: Focus solely on the capital A, repeating it multiple times.
- Incorporate it into words: Write words that begin with the letter A, such as "Apple," "Art," and "Alligator."
- Create phrases: Write out sentences that contain multiple capital A's to practice transitions between letters.

5. Experiment with Style

Once you feel comfortable with the standard cursive capital A, experiment with different styles. Try writing it in italic or fancy cursive and see how it changes your overall handwriting. This experimentation can help you develop a unique cursive style that feels personal to you.

Common Mistakes to Avoid

As you practice writing the cursive capital letter A, be mindful of common mistakes:

- Inconsistent Size: Ensure your letter maintains a consistent size throughout your writing.
- Disconnected Strokes: Cursive writing is meant to flow. Avoid lifting your pen too often between strokes.
- Poor Loop Control: Make sure the loop at the bottom of the letter is neither too tight nor too loose. It should be smooth and proportionate.

Conclusion

Mastering **the capital letter A in cursive** is an important step in developing your cursive writing skills. Its unique shape and flowing nature not only make it a foundational letter for beginners but also an essential element of personal expression and artistic endeavors. By practicing the techniques outlined in this article—focusing on proper posture, slow practice, repetition, and experimentation—you will be well on your way to writing elegant cursive letters. Whether for personal correspondence, artistic projects, or creating a beautiful signature, mastery of the cursive capital A will enhance your handwriting and overall written communication.

Frequently Asked Questions

How do you write a capital letter A in cursive?

To write a capital letter A in cursive, start by making a loop from the baseline upwards, forming a rounded top. Then, draw a diagonal line downwards to the left, followed by another diagonal line downwards to the right, connecting back to the baseline.

What are some tips for practicing the cursive capital letter A?

To practice the cursive capital letter A, use lined paper to maintain consistent size and slant. Start slowly, focusing on the smoothness of your strokes, and use a pencil to easily erase mistakes. Repeating the letter multiple times can help improve your muscle memory.

Why is it important to learn cursive writing, including the capital letter A?

Learning cursive writing, including the capital letter A, is important because it enhances fine motor skills, improves handwriting fluidity, and helps students connect letters more easily, leading to faster writing and better note-taking skills.

What common mistakes should I avoid when writing a cursive capital A?

Common mistakes when writing a cursive capital A include making the top loop too small, not connecting the diagonal lines properly, and writing the letter too far above or below the baseline. Practice consistently to avoid these issues.

Can I use different styles for cursive capital A?

Yes, there are various styles for writing the cursive capital A. Some styles have a more exaggerated loop, while others may be more angular. You can experiment with different styles to find one that feels comfortable and looks appealing to you.

Are there any online resources for learning cursive, specifically for the capital letter A?

Yes, there are many online resources available, including YouTube tutorials, educational websites, and printable worksheets specifically designed for practicing cursive letters like the capital A. Websites like Teachers Pay Teachers and educational blogs often provide free resources.

Find other PDF article:

<https://soc.up.edu.ph/56-quote/files?trackid=deB90-2824&title=strong-in-battle-bible-study.pdf>

[Capital Letter A In Cursive](#)

Secured, Guaranteed and Rewards Credi...

Mastercard is a registered trademark, and the circles design is a trademark of ...

Accédez à nos services bancaires ...

Grâce aux services bancaires en ligne, vous bénéficiez d'un accès ...

Sign in to Online Banking | Capital O...

With online banking, you have safe and secure access to your Capital One account. You can also ...

Online banking - Capital One Canada

How to set up, sign in to and manage your account online or through the ...

How to Sign in to Online Banking - Ca...

You can sign in to online banking by visiting the Capital One sign in page ...

Secured, Guaranteed and Rewards Credit Cards | Capital One Canada

Mastercard is a registered trademark, and the circles design is a trademark of Mastercard International Incorporated. All trademarks ...

Accédez à nos services bancaires en ligne | Capital One Canada

Grâce aux services bancaires en ligne, vous bénéficiez d'un accès sécuritaire à votre compte Capital One. Vous pouvez ...

Sign in to Online Banking | Capital One Canada

With online banking, you have safe and secure access to your Capital One account. You can also view transactions, check your balance and payment due date, sign up for alerts and ...

Online banking - Capital One Canada

How to set up, sign in to and manage your account online or through the Capital One Canada Mobile App. Have all your account ...

How to Sign in to Online Banking - Capital One Canada

You can sign in to online banking by visiting the Capital One sign in page or through the Capital One mobile app.

Discover how to write the capital letter A in cursive with our easy-to-follow guide. Perfect your cursive skills today! Learn more for expert tips and tricks.

[Back to Home](#)