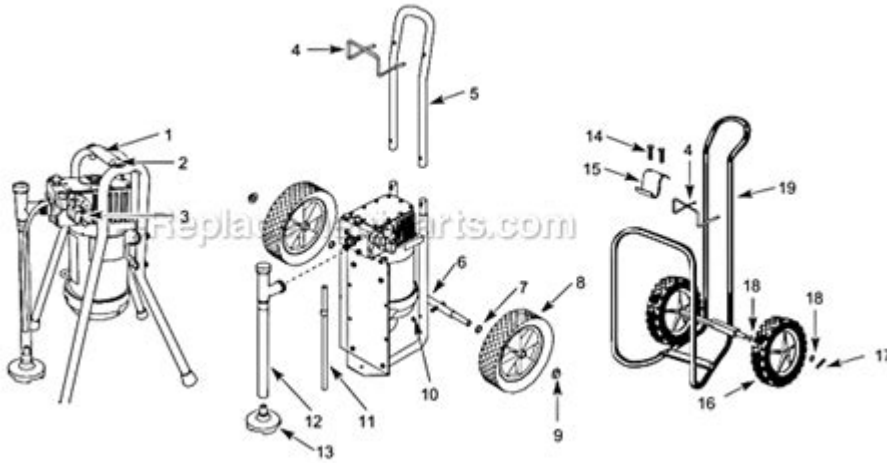


Campbell Hausfeld Airless Paint Sprayer Parts Diagram



Campbell Hausfeld airless paint sprayer parts diagram is essential for anyone looking to maintain, troubleshoot, or repair their paint sprayer. Understanding the components of your airless paint sprayer can lead to improved performance, extended lifespan, and better painting results. This article will delve into the various parts of the Campbell Hausfeld airless paint sprayer, their functions, common issues, and how to interpret the parts diagram effectively.

Overview of Campbell Hausfeld Airless Paint Sprayers

Campbell Hausfeld is a reputable brand in the world of power tools, and their airless paint sprayers are known for their efficiency and reliability. These sprayers are designed to deliver a smooth, even finish without the need for compressed air, making them ideal for both professional contractors and DIY enthusiasts.

The basic operation involves drawing paint from a container and forcing it through a spray tip under high pressure. This method allows for quick application over large surfaces, making it a popular choice for various painting projects.

Understanding the Parts Diagram

A parts diagram is a visual representation of the different components that make up the airless paint sprayer. Each part is labeled, allowing users to identify and understand the function of each component. Familiarity with the parts diagram is crucial for anyone looking to perform maintenance or repairs.

Key Components of the Campbell Hausfeld Airless Paint Sprayer

Below is a breakdown of the essential components typically found in the parts diagram of Campbell Hausfeld airless paint sprayers:

1. **Motor:** The motor powers the pump and drives the system. It is critical for generating the pressure needed to spray paint effectively.
2. **Pump:** The pump draws paint from the container and pressurizes it for spraying. It can be a diaphragm or piston type, depending on the model.
3. **Pressure Control Valve:** This component regulates the pressure of the paint as it exits the pump, ensuring a consistent spray pattern.
4. **Spray Gun:** The spray gun is the tool that disperses the paint. It includes a trigger for controlling the flow and various nozzle options for different spray patterns.
5. **Spray Tip:** The spray tip determines the width of the paint spray and the thickness of the application. Different tips are used for different types of paint and finishes.
6. **Hoses:** Hoses transport the paint from the pump to the spray gun. They must be durable and flexible to handle the high pressure.
7. **Filter:** Filters prevent debris from entering the system, which can lead to clogging and poor performance.
8. **Container:** The container holds the paint and can vary in size depending on the model of the sprayer.
9. **Pressure Gauge:** This gauge provides real-time feedback on the pressure in the system, allowing for adjustments as needed.

Common Issues and Troubleshooting

Understanding the parts diagram can help identify common issues that may arise during the operation of your airless paint sprayer. Here are a few typical problems and their possible solutions:

1. Poor Spray Pattern

- Cause: This can be due to a clogged spray tip or low pressure.
- Solution: Clean the spray tip thoroughly or replace it if damaged. Check the pressure gauge and adjust accordingly.

2. Paint Leakage

- Cause: Leaks can occur from worn O-rings or loose connections.
- Solution: Inspect all connections and seals for tightness. Replace any worn parts as necessary.

3. Motor Not Starting

- Cause: Electrical issues or a faulty motor.
- Solution: Check the power source and ensure the motor is receiving electricity. If the motor is faulty, it may need replacement.

4. Uneven Paint Application

- Cause: This could result from inconsistent pressure or a dirty filter.
- Solution: Ensure the pressure is set correctly and clean or replace the filter if necessary.

Maintenance Tips for Your Airless Paint Sprayer

Regular maintenance is vital to keeping your Campbell Hausfeld airless paint sprayer in top condition. Here are some tips to help extend the life of your equipment:

- **Clean After Use:** Always clean the sprayer after each use to prevent paint from drying in the system.
- **Check for Wear:** Regularly inspect hoses, seals, and tips for signs of wear or damage.
- **Lubricate Moving Parts:** Ensure that all moving parts are lubricated as per the manufacturer's recommendations.
- **Store Properly:** Store the sprayer in a dry, cool place to prevent damage from extreme temperatures.
- **Follow Manufacturer Instructions:** Always refer to the user manual for specific maintenance instructions and guidelines.

Where to Find Replacement Parts

When repairs or replacements are necessary, it's essential to know where to find the right parts for your Campbell Hausfeld airless paint sprayer. Here are some reliable sources:

1. **Official Campbell Hausfeld Website:** The manufacturer's website often has a dedicated

section for replacement parts, including diagrams and ordering information.

2. **Authorized Dealers:** Local hardware stores or tool dealers that are authorized by Campbell Hausfeld can provide genuine replacement parts.
3. **Online Retailers:** Websites like Amazon, eBay, and specialized tool retailers often carry a wide range of parts.
4. **Repair Shops:** Local repair shops that specialize in power tools may have the parts you need or can assist with repairs.

Conclusion

Understanding the **Campbell Hausfeld airless paint sprayer parts diagram** is crucial for anyone involved in painting projects. Familiarity with the various components not only aids in maintenance and troubleshooting but also enhances overall performance and efficiency. By following the maintenance tips outlined in this article and knowing where to source replacement parts, you can ensure that your airless paint sprayer remains a reliable tool for all your painting needs. With proper care and attention, your Campbell Hausfeld sprayer will continue to deliver exceptional results for years to come.

Frequently Asked Questions

What is a Campbell Hausfeld airless paint sprayer parts diagram?

A Campbell Hausfeld airless paint sprayer parts diagram is a visual representation that outlines the various components of the paint sprayer, helping users identify and locate specific parts for maintenance or repairs.

Where can I find a Campbell Hausfeld airless paint sprayer parts diagram?

You can find the parts diagram on the official Campbell Hausfeld website, in the user manual that comes with the sprayer, or through authorized dealers and repair shops.

How can I use the parts diagram to troubleshoot my sprayer?

By referencing the parts diagram, you can identify which components may be malfunctioning or damaged, allowing you to troubleshoot issues such as clogs, leaks, or poor spray patterns.

Are parts for Campbell Hausfeld airless paint sprayers easy to

find?

Yes, parts for Campbell Hausfeld airless paint sprayers are generally easy to find through online retailers, hardware stores, or directly from Campbell Hausfeld's customer service.

What common parts are included in the Campbell Hausfeld airless paint sprayer parts diagram?

Common parts include the pump, spray gun, hose, nozzle, filter, and pressure regulator, among others.

Can I download a parts diagram for my specific model of Campbell Hausfeld airless paint sprayer?

Yes, most models have downloadable parts diagrams available on the Campbell Hausfeld website, which can be accessed by entering your model number.

Do I need specialized tools to replace parts indicated in the diagram?

While some parts may require specialized tools for replacement, most common maintenance tasks can be performed with basic hand tools like wrenches and screwdrivers.

Is the parts diagram the same for all Campbell Hausfeld airless paint sprayers?

No, the parts diagram varies by model, so it is important to refer to the specific diagram that corresponds to your particular sprayer model.

How can I ensure I'm ordering the correct replacement parts using the diagram?

To ensure you are ordering the correct replacement parts, cross-reference the part numbers listed in the diagram with those available for purchase, and confirm compatibility with your sprayer model.

Find other PDF article:

<https://soc.up.edu.ph/67-blur/pdf?trackid=XrZ47-4256&title=william-morris-designs-and-patterns.pdf>

[Campbell Hausfeld Airless Paint Sprayer Parts Diagram](#)

Home - Campbell Company of Canada

Campbell's® Broccoli Cheese soup is the perfect blend of Broccoli and Cheese in a creamy soup base. Try it in a recipe tonight! ...

Soups and Chilis - Campbell Company of Canada

Campbell's® soups have been welcome guests in Canadian kitchens since 1930. Add our selection of amazing chilis to the roster ...

Home - Campbell Company of Canada

Petit creux d'adulte ou petit creux d'enfant, Campbell's offre des collations savoureuses et originales pour toute la famille. Découvrez ...

Cooking - Campbell Company of Canada

Add flavour to everyday meals and recipes with Campbell's® stocks, broths, gravies, condensed soups and sauces. Our family of ...

Our Brands - Campbell Company of Canada

Campbell's® soups have been welcome guests in Canadian kitchens for over 87 years. With a wide range of variety including chilis, ...

Home - Campbell Company of Canada

Campbell's® Broccoli Cheese soup is the perfect blend of Broccoli and Cheese in a creamy soup base. Try it in a recipe tonight! Substitute any Pace Chunky Salsa Recipe with our 30% Less Salt ...

Soups and Chilis - Campbell Company of Canada

Campbell's® soups have been welcome guests in Canadian kitchens since 1930. Add our selection of amazing chilis to the roster and we've got you covered.

Home - Campbell Company of Canada

Petit creux d'adulte ou petit creux d'enfant, Campbell's offre des collations savoureuses et originales pour toute la famille. Découvrez nos salsas, nos sauces, nos craquelins et nos biscuits.

Cooking - Campbell Company of Canada

Add flavour to everyday meals and recipes with Campbell's® stocks, broths, gravies, condensed soups and sauces. Our family of cooking products make the perfect versatile ingredients for all ...

Our Brands - Campbell Company of Canada

Campbell's® soups have been welcome guests in Canadian kitchens for over 87 years. With a wide range of variety including chilis, we have you covered, whether you're looking for a quick ...

Contact Us - Campbell Company of Canada

Write Us. Campbell Company of Canada 2845 Matheson Blvd. East, Mississauga, Ontario L4W 5J8 / Canada

Campbell's Chunky - Campbell Company of Canada

Campbell's® Chunky® Feast your eyes on the many varieties of Chunky Soups, each packed with hearty veggies like carrots, celery and potatoes and seasoned meats like juicy prime rib, steak ...

Campbell's Condensed Soups - Campbell Company of Canada

Campbell's® Condensed soups come in a large assortment of great tasting varieties, are easy to prepare and can be enjoyed any time. It's no wonder Campbell's® Condensed soups have been a ...

News - Campbell Company of Canada

May 31, 2024 · Campbell Company of Canada will make changes across its portfolio to better connect with consumers on issues that matter to them, and to simplify selected products in line ...

Our Story - Campbell Company of Canada

The story of Campbell Soup began in 1869 when Joseph Campbell, a fruit merchant, and Abraham Anderson, an icebox maker, formed the Joseph Campbell Preserve Company in Camden, New ...

Explore the complete Campbell Hausfeld airless paint sprayer parts diagram to identify components and enhance your DIY projects. Learn more for expert insights!

[Back to Home](#)