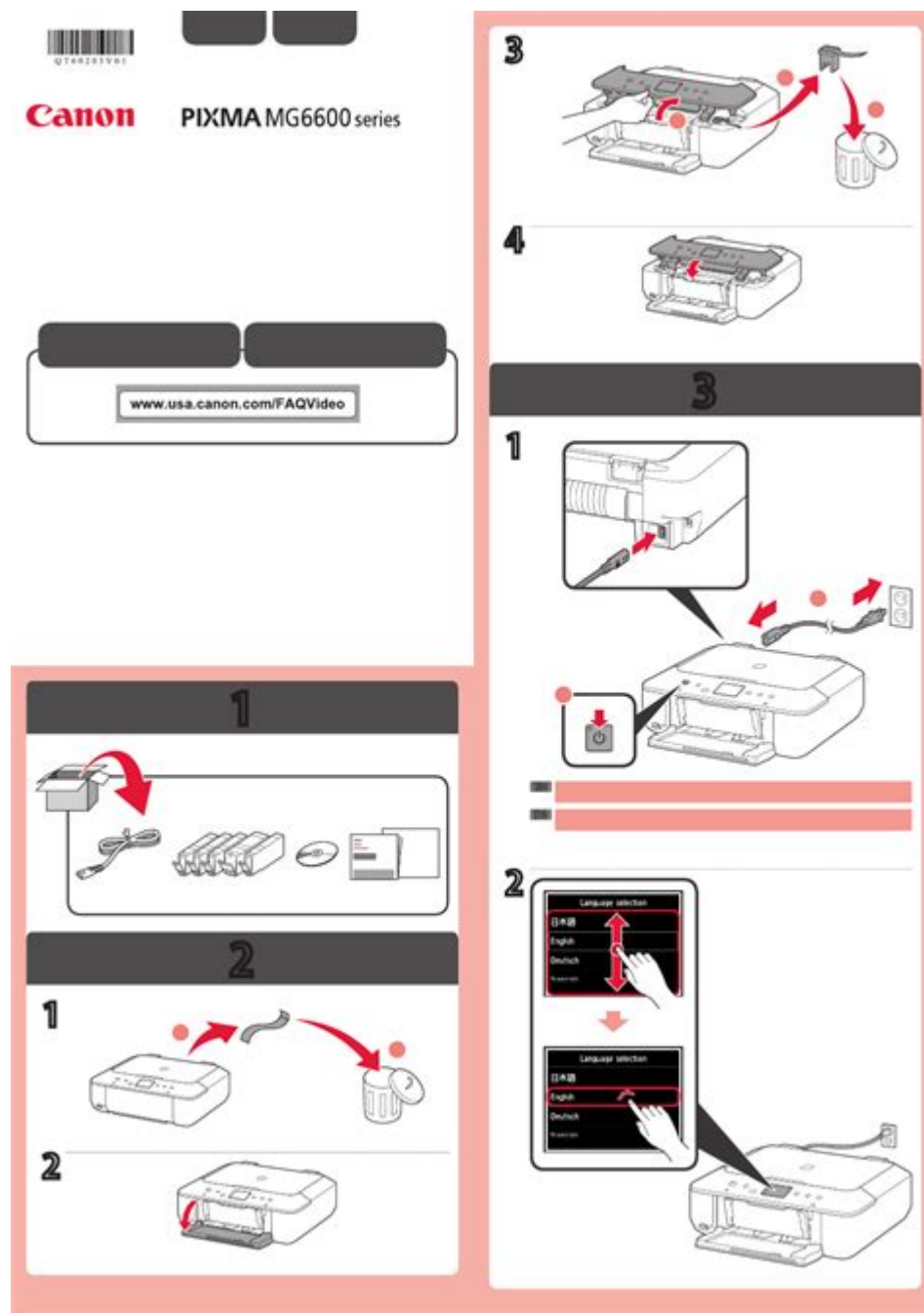


# Canon G7020 Printer Manual



Canon G7020 Printer Manual: Understanding your Canon G7020 printer can enhance your printing experience significantly. This all-in-one printer is designed to deliver high-quality prints, scans, and copies while being cost-effective, thanks to its refillable ink tank system. In this comprehensive guide, we will explore the features of the Canon G7020, setup instructions, troubleshooting tips, maintenance advice, and more. By the end of this article, you will have a solid understanding of how to maximize the capabilities of your Canon G7020 printer.

# Features of the Canon G7020

The Canon G7020 printer comes packed with features that make it a versatile choice for home and office use. Here are some of the standout characteristics:

## 1. High-Volume Printing

- Refillable Ink Tanks: The G7020 uses a high-capacity ink tank system that allows for a large volume of printing without frequent ink replacements.
- Cost Efficiency: With the ability to print up to 6,000 black and white pages and 7,700 color pages with a single set of ink bottles, the G7020 is designed for high-volume users.

## 2. Versatile Media Handling

- Multiple Paper Sizes: This printer can handle various paper sizes, including A4, A5, and envelopes, making it ideal for different printing tasks.
- Automatic Document Feeder (ADF): The 35-sheet ADF allows for easy scanning and copying of multi-page documents.

## 3. Wireless Connectivity

- Wi-Fi and Ethernet: The G7020 supports wireless printing, allowing users to print from smartphones, tablets, and computers without needing a physical connection.
- Mobile Printing Options: Compatibility with Canon's PRINT app, Apple AirPrint, and Google Cloud Print enables convenient mobile printing.

## 4. Quality Output

- High Resolution: The printer delivers stunning prints with an optical resolution of up to 4800 x 1200 dpi, ensuring that your documents and photos look professional.

# Setting Up Your Canon G7020

Setting up your Canon G7020 printer is straightforward. Follow these steps to get started:

## 1. Unboxing and Initial Setup

- Unpack the Printer: Remove the printer from the box and take out all protective materials.
- Power Connection: Plug the printer into an electrical socket and turn it on using the power button located on the front panel.

## 2. Installing the Ink Tanks

- Open the Ink Tank Cover: Locate the ink tank cover on the side of the printer and open it.
- Insert the Ink Bottles: Carefully shake the ink bottles before removing the caps. Fill each tank with the corresponding color of ink, ensuring no spills occur.
- Close the Cover: Once all ink tanks are filled, close the cover securely.

## 3. Loading Paper

- Adjust Paper Guides: Pull out the paper tray and adjust the guides to fit the size of the paper you are using.
- Load Paper: Place the paper in the tray and push it back in until it clicks into place.

## 4. Connecting to Wi-Fi

- Wireless Setup: On the printer's control panel, navigate to the 'Settings' menu, select 'Wireless LAN Setup,' and follow the prompts to connect to your Wi-Fi network.

## 5. Installing Drivers and Software

- Download Drivers: Visit the Canon website and download the necessary drivers for your operating system.
- Install Software: Follow the installation instructions to set up the printer on your computer.

# Using Your Canon G7020

Once your printer is set up, it's time to explore its functionalities. Here are some key operations you can perform:

## 1. Printing Documents

- From a Computer: Open the document you wish to print, select 'Print,' choose the Canon G7020 from the printer list, and adjust settings as necessary.
- From Mobile Devices: Use the Canon PRINT app or AirPrint for easy mobile printing.

## 2. Scanning Documents

- Flatbed Scanning: Place the document face down on the scanner glass, select 'Scan' from the control panel, and follow the prompts.
- ADF Scanning: Load multiple pages into the ADF, select the scan option, and the printer will automatically scan each page.

### **3. Copying Documents**

- Single Copy: Place the document on the scanner glass, select 'Copy,' and adjust settings for color or black and white.
- Multiple Copies: Use the numeric keypad to select the number of copies before pressing 'Start.'

## **Troubleshooting Common Issues**

Even the best printers can encounter issues from time to time. Here are some common problems with the Canon G7020 and how to resolve them:

### **1. Printer Not Responding**

- Check Connections: Ensure that the power cable is securely plugged in and that the printer is turned on.
- Restart the Printer: Turn off the printer, wait a few seconds, and turn it back on.

### **2. Poor Print Quality**

- Check Ink Levels: If the print quality is poor, check the ink levels and refill if necessary.
- Clean Print Heads: Use the printer's maintenance menu to perform a print head cleaning cycle.

### **3. Paper Jams**

- Clear the Jam: Open the printer's cover and carefully remove any jammed paper. Ensure there are no torn pieces left inside.
- Check Paper Path: Make sure the paper is loaded correctly and that the guides are snug against the paper.

## **Maintenance Tips for Longevity**

To keep your Canon G7020 printer in optimal condition, regular maintenance is essential. Here are some tips:

### **1. Regular Cleaning**

- Print Head Cleaning: Perform print head cleaning every few months to prevent clogging.
- Exterior Wipe Down: Use a soft cloth to wipe down the exterior of the printer to keep it dust-free.

## **2. Software Updates**

- Check for Updates: Regularly check Canon's website for driver and firmware updates to ensure your printer runs smoothly.

## **3. Proper Ink Usage**

- Use Genuine Canon Ink: Always use original Canon ink bottles to maintain print quality and avoid damage to the printer.

## **Conclusion**

The Canon G7020 Printer Manual serves as an essential guide for users looking to optimize their printing experience. From setting up the printer to troubleshooting common issues and performing maintenance, understanding the G7020's features enables users to leverage its capabilities fully. By following the guidelines outlined in this article, you can ensure that your Canon G7020 printer remains a reliable tool for all your printing, scanning, and copying needs. With its blend of efficiency, quality, and versatility, the G7020 is undeniably a strong choice for both home and office environments.

## **Frequently Asked Questions**

### **Where can I find the Canon G7020 printer manual?**

You can find the Canon G7020 printer manual on the official Canon website under the support section or by searching for 'Canon G7020 manual PDF' in your preferred search engine.

### **What are the key features of the Canon G7020 printer?**

The Canon G7020 printer features wireless connectivity, auto-duplex printing, a high-capacity ink tank system, and the ability to print, scan, and copy. It is designed for both home and office use.

### **How do I set up my Canon G7020 printer for the first time?**

To set up your Canon G7020 printer, unpack the printer, install the ink tanks as per the manual instructions, load paper into the tray, connect the printer to your Wi-Fi network, and install the printer driver on your computer.

### **What should I do if my Canon G7020 printer is not connecting to Wi-Fi?**

If your Canon G7020 printer is not connecting to Wi-Fi, ensure that the printer is within

range of the router, check that the Wi-Fi network is functioning, and refer to the manual for troubleshooting steps related to network settings.

## How can I perform maintenance on my Canon G7020 printer?

Maintenance for the Canon G7020 printer includes regularly cleaning the print head, checking ink levels, updating the printer firmware, and ensuring the paper feed is clear of jams. Refer to the manual for detailed maintenance procedures.

## Can I print from my mobile device using the Canon G7020?

Yes, you can print from your mobile device using the Canon G7020 through the Canon PRINT app or by using AirPrint for iOS devices, provided the printer is connected to the same Wi-Fi network.

## What types of paper can I use with the Canon G7020 printer?

The Canon G7020 printer supports various paper types including plain paper, photo paper, envelopes, and specialized media like glossy and matte paper. Refer to the manual for specific recommendations on paper sizes and types.

Find other PDF article:

<https://soc.up.edu.ph/32-blog/pdf?ID=wLH77-3808&title=ignite-real-estate-training.pdf>

## Canon G7020 Printer Manual

24-70 F2.8 24-70 F4

Jun 10, 2018 · 24-70 24-70f2.8.....

EF 200MM F2

May 27, 2015 · 200f/2 T F2.0 ...

Canon 40D err 99

Nov 1, 2008 · 40D, 7000 err99 lv err99B err99 cmos ...

Canon A-1

Jun 3, 2004 · Canon A-1

Canon Nano USM

Feb 19, 2016 · Canon  
5MM ...

