

Case 580 Super E Parts Diagram

580SE CASE SUPER-E CONSTRUCTION KING LOADER BACKHOE - Pictorial Index

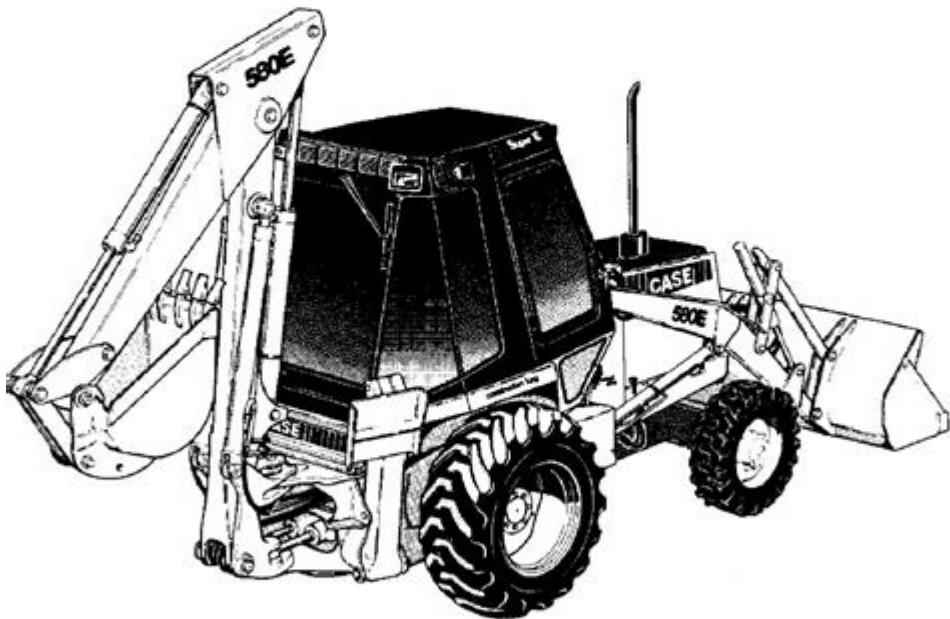
001 REVISION RECORD LOG

REVISION RECORD LOG

REVISION NO	DATE INSERTED
1	
2	
3	
4	
5	

580 SUPER E
CONSTRUCTION KING
LOADER BACKHOE
Parts Catalog 8-1833

NOTE: Discard Parts Catalog 8-1832.



J I Case
A Tenneco Company



Issued December, 1986

Printed in U.S.A.
830548A

Case 580 Super E Parts Diagram is an essential resource for owners and mechanics working on this popular backhoe loader model. The Case 580 Super E is renowned for its versatility, reliability, and ease of maintenance, making it a favorite in construction, landscaping, and agricultural applications. Understanding the parts diagram is crucial for effective troubleshooting, maintenance, and repair. This article delves into the various components of the Case 580 Super E and how to interpret its parts diagram.

Overview of the Case 580 Super E

The Case 580 Super E is a powerful backhoe loader that combines the capabilities of a loader and an excavator. It is equipped with a robust engine, advanced hydraulic systems, and various attachments, making it suitable for a wide range of tasks. The model was introduced in the late 1980s and has since become a staple in many equipment fleets.

Key specifications of the Case 580 Super E include:

- Engine: Typically powered by a Case 4-cylinder diesel engine
- Horsepower: Ranges around 64 to 70 HP
- Operating Weight: Approximately 8,000 to 10,000 pounds
- Bucket Capacity: Varies based on the attachment but generally ranges from 1.0 to 1.5 cubic yards

Importance of a Parts Diagram

A parts diagram serves multiple purposes:

1. Visual Reference: It provides a visual representation of the machine's components, facilitating easier identification of parts.
2. Maintenance and Repair: Understanding the layout helps in diagnosing issues and performing repairs efficiently.
3. Ordering Parts: When parts need replacement, the diagram assists in identifying the correct components to order.
4. Safety: Proper knowledge of parts can help in ensuring safe operation and maintenance.

Components of the Case 580 Super E Parts Diagram

The parts diagram for the Case 580 Super E includes various sections that correspond to different components of the machine. Below are the primary categories of parts typically illustrated in the diagram:

1. Engine Components

The engine is the heart of the Case 580 Super E, and its components are essential for performance.

- Cylinder Head: Houses the valves and fuel injectors.
- Oil Pan: Collects oil from the engine for lubrication.

- Fuel Pump: Delivers fuel to the injectors.
- Cooling System: Includes the radiator and water pump to manage engine temperature.

2. Transmission and Drive Train

The transmission and drive train components are critical for the movement and operation of the backhoe loader.

- Torque Converter: Provides increased torque for heavy loads.
- Transmission: Engages the power from the engine to the wheels.
- Differential: Distributes power to the left and right wheels for better traction.

3. Hydraulic System

The hydraulic system is vital for operating the loader and excavator arms.

- Hydraulic Pump: Generates hydraulic pressure to power the system.
- Hydraulic Cylinders: Actuate the loader and backhoe arms.
- Control Valves: Direct the flow of hydraulic fluid to various components.

4. Loader and Backhoe Attachments

The Case 580 Super E can be equipped with various attachments, enhancing its functionality.

- Loader Bucket: Used for digging, lifting, and moving materials.
- Backhoe Bucket: Designed for excavation tasks.
- Forks and Grapples: Allow for handling pallets and debris.

5. Electrical System

The electrical components control various functions and provide power to the machine.

- Battery: Supplies power to start the engine and run electrical systems.
- Alternator: Charges the battery while the engine is running.
- Fuses and Relays: Protect electrical circuits and manage power distribution.

How to Use the Parts Diagram

Understanding how to read and utilize the parts diagram can greatly enhance your maintenance and repair efforts. Here's a step-by-step approach:

1. **Locate the Diagram:** Obtain a copy of the Case 580 Super E parts diagram, which can typically be found in the owner's manual or online.
2. **Identify Sections:** Familiarize yourself with the different sections of the diagram, such as engine, hydraulics, and electrical systems.
3. **Trace Components:** Use the diagram to trace specific components you need to inspect or replace.
4. **Cross-reference Parts Numbers:** Match the parts with their numbers for accurate ordering and replacement.
5. **Follow Maintenance Procedures:** Utilize the diagram in conjunction with maintenance manuals to ensure proper procedures are followed.

Common Issues and Troubleshooting

When working with the Case 580 Super E, it's not uncommon to encounter issues that may require referencing the parts diagram for troubleshooting. Here are some common problems and their potential solutions:

1. Engine Overheating

If the engine is overheating, check the cooling system components such as the radiator and water pump. Refer to the parts diagram to identify the location of hoses and connections that may need inspection.

2. Hydraulic System Failure

A malfunctioning hydraulic system can lead to poor performance of the loader and backhoe. Check for leaks in the hydraulic lines and ensure the hydraulic fluid levels are adequate. Use the diagram to locate the hydraulic pump and cylinders for further inspection.

3. Electrical Issues

Electrical problems can manifest as starting issues or malfunctioning lights. Inspect the battery, fuses, and wiring connections based on the electrical section of the parts diagram.

Where to Find Replacement Parts

Finding quality replacement parts for the Case 580 Super E is crucial for maintaining its performance. Here are some reliable sources:

- **Authorized Case Dealers:** Purchasing from authorized dealers ensures you receive OEM (Original Equipment Manufacturer) parts.
- **Online Retailers:** Websites such as eBay and Amazon often list parts for the Case 580 Super E.
- **Salvage Yards:** Consider checking local salvage yards for used parts that are still in good condition.
- **Aftermarket Suppliers:** Many companies specialize in aftermarket parts that can be more affordable than OEM options.

Conclusion

The Case 580 Super E parts diagram is an invaluable tool for anyone involved in the maintenance and repair of this versatile backhoe loader. By understanding the diagram and the components of the machine, operators and mechanics can ensure the equipment remains in optimal working condition. Regular maintenance and timely repairs, guided by the parts diagram, will extend the life of the Case 580 Super E and enhance its performance on the job site. Whether you are a seasoned mechanic or a new owner, familiarizing yourself with the parts diagram will empower you to tackle any challenges that may arise.

Frequently Asked Questions

Where can I find the parts diagram for a Case 580

Super E?

You can find the parts diagram for a Case 580 Super E on the official Case Construction Equipment website or through authorized dealers. Online forums and repair manual websites also often provide downloadable diagrams.

What are some common replacement parts for the Case 580 Super E?

Common replacement parts for the Case 580 Super E include hydraulic filters, oil filters, bucket teeth, seals, and belts. It's important to refer to the parts diagram for specific part numbers.

How do I interpret the parts diagram for the Case 580 Super E?

To interpret the parts diagram for the Case 580 Super E, start by identifying the section of the machine you are working on. Each part will be labeled with a number or code, which corresponds to a list of parts, including descriptions and part numbers.

Are there online resources for Case 580 Super E parts diagrams?

Yes, several online resources offer parts diagrams for the Case 580 Super E. Websites like Construction Equipment Guide, TractorJoe, and various mechanic forums provide detailed diagrams along with parts listings.

Can I order parts directly from the parts diagram for the Case 580 Super E?

Yes, once you identify the part you need from the parts diagram, you can order it directly from Case authorized dealers or through online retailers that specialize in heavy equipment parts.

Find other PDF article:

<https://soc.up.edu.ph/62-type/files?dataid=ThG45-9191&title=title-31-training-for-casinos.pdf>

Case 580 Super E Parts Diagram

Tracteurs - Case IH

Case IH propose une gamme complète de tracteurs pour toutes les utilisations. Découvrez tous les tracteurs.

Traktoren & landwirtschaftliche Geräte | Case IH

Besuchen Sie die Website von Case IH und entdecken Sie alle unsere Produkte: Traktoren, Erntemaschinen, Ballenpressen, Lader und vieles mehr.

Ciągniki i sprzęt rolniczy | CASE IH

Odwiedź stronę internetową Case IH i odkryj wszystkie nasze produkty: ciągniki, sprzęt żniwny, prasy, ładowarki i wiele innych.

Harvesting, Planting, & Farming Equipment - Canada | Case IH

Case IH is a global leader in agriculture and farm equipment. Compare tractors, planting, harvesting, and many other products on CASE IH website.

CASE IH - Choose your market

Explore Case IH's global website to choose your country and discover agricultural machinery, equipment, and services tailored to your needs.

Tractoren - Case IH

De Case IH Quantum-tractoren van 80-120 pk krijgen in 2025 nieuwe functies die extra mogelijkheden en prestaties bieden voor deze gespecialiseerde modellen. De upgrades zijn ...

Case IH Brasil | Máquinas Agrícolas e Tecnologia para o Campo

Explore a Case IH Brasil, líder em máquinas agrícolas. Descubra tratores, colheitadeiras, pulverizadores, plantadeiras e mais, com tecnologia de ponta para aumentar sua ...

Harvesting, Planting, & Farming Equipment | Case IH

Case IH is a global leader in agriculture and farm equipment. Compare tractors, planting, harvesting, and many other products on CASE IH website.

Genuine Parts | Parts & Services | Case IH

With the range of Genuine Parts, Case IH is committed to optimizing your performance: batteries, belts, bearings, engine air filters, fuel filters, seat covers & floor mats and much more.

Tractors & Farm Equipment | CASE IH

Visit Case IH website and discover all our products: Tractors, Harvesting equipment, Baler, Loaders and much more.

Tracteurs - Case IH

Case IH propose une gamme complète de tracteurs pour toutes les utilisations. Découvrez tous les tracteurs.

Traktoren & landwirtschaftliche Geräte | Case IH

Besuchen Sie die Website von Case IH und entdecken Sie alle unsere Produkte: Traktoren, Erntemaschinen, Ballenpressen, Lader und vieles mehr.

Ciągniki i sprzęt rolniczy | CASE IH

Odwiedź stronę internetową Case IH i odkryj wszystkie nasze produkty: ciągniki, sprzęt żniwny, prasy, ładowarki i wiele innych.

Harvesting, Planting, & Farming Equipment - Canada | Case IH

Case IH is a global leader in agriculture and farm equipment. Compare tractors, planting, harvesting, and many other products on CASE IH website.

CASE IH - Choose your market

Explore Case IH's global website to choose your country and discover agricultural machinery, equipment, and services tailored to your needs.

Tractoren - Case IH

De Case IH Quantum-tractoren van 80-120 pk krijgen in 2025 nieuwe functies die extra mogelijkheden en prestaties bieden voor deze gespecialiseerde modellen. De upgrades zijn ...

Case IH Brasil | Máquinas Agrícolas e Tecnologia para o Campo

Explore a Case IH Brasil, líder em máquinas agrícolas. Descubra tratores, colheitadeiras, pulverizadores, plantadeiras e mais, com tecnologia de ponta para aumentar sua ...

Harvesting, Planting, & Farming Equipment | Case IH

Case IH is a global leader in agriculture and farm equipment. Compare tractors, planting, harvesting, and many other products on CASE IH website.

Genuine Parts | Parts & Services | Case IH

With the range of Genuine Parts, Case IH is committed to optimizing your performance: batteries, belts, bearings, engine air filters, fuel filters, seat covers & floor mats and much more.

Tractors & Farm Equipment | CASE IH

Visit Case IH website and discover all our products: Tractors, Harvesting equipment, Baler, Loaders and much more.

Explore our detailed Case 580 Super E parts diagram to identify components easily. Enhance your repairs and maintenance today! Learn more for expert insights.

[Back to Home](#)