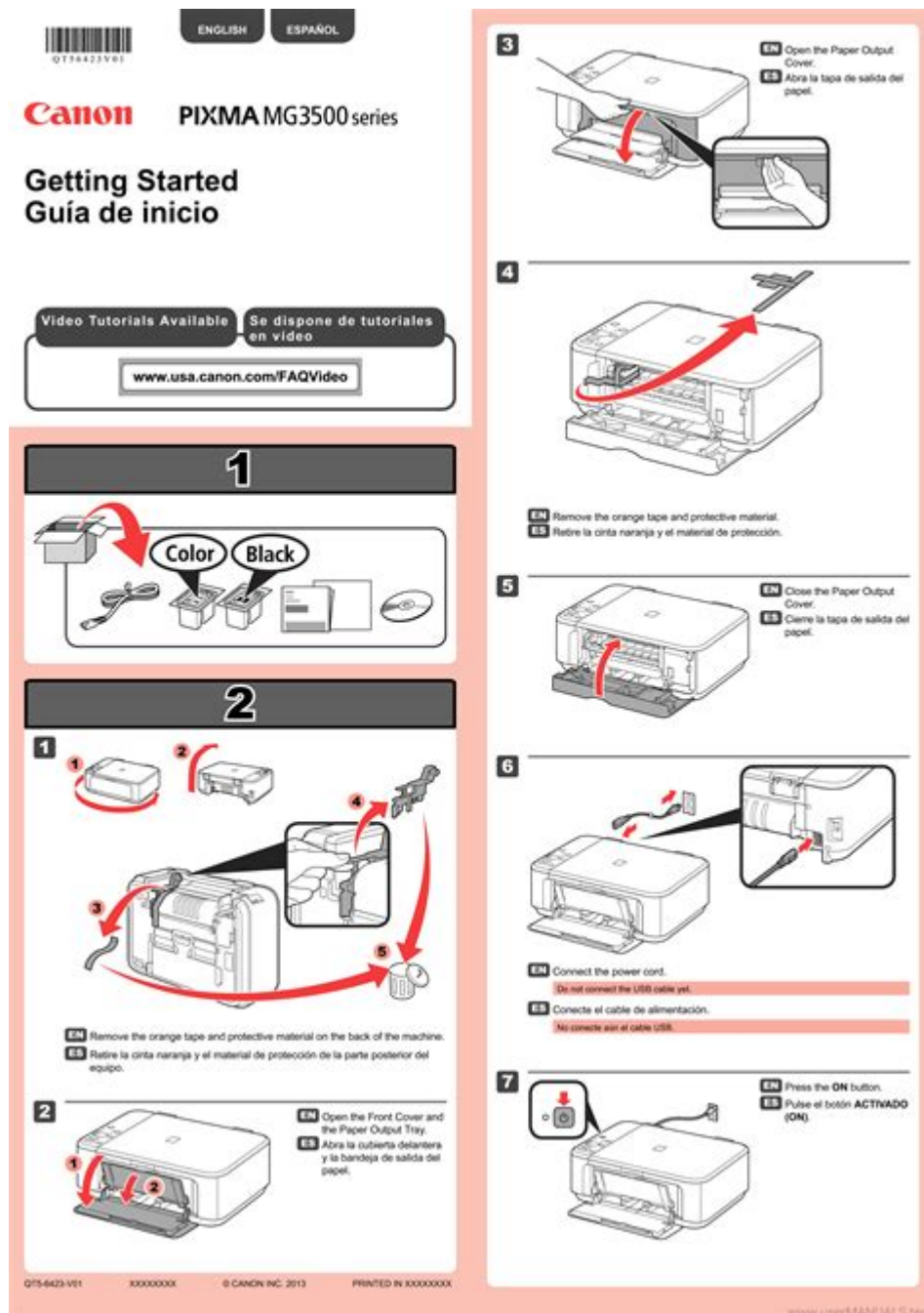


Canon Printer Pixma Manual



Canon printer Pixma manual is an essential resource for users who want to maximize their experience with Canon's line of Pixma printers. These printers are renowned for their high-quality output, user-friendly features, and versatile functionality. Whether you are a student, a home office user, or a professional artist, having access to the manual can help you understand your printer's capabilities, troubleshoot common issues, and maintain optimal performance. This article will delve into the various aspects of the Canon Pixma printer manual, including installation, setup, maintenance, and troubleshooting techniques.

Understanding the Canon Pixma Series

The Canon Pixma series consists of a range of inkjet printers designed for various printing needs—from simple document printing to high-quality photo reproduction. The series includes models such as the Pixma MG, MX, and TS series, each offering unique features tailored to specific user requirements.

Key Features of Canon Pixma Printers

1. **High Print Quality:** Canon Pixma printers are known for their exceptional print quality, making them ideal for printing photos and documents.
2. **Wireless Connectivity:** Many models support Wi-Fi and Bluetooth connectivity, allowing users to print directly from their smartphones, tablets, or computers without needing cables.
3. **All-in-One Functionality:** Most Pixma printers are multifunctional, providing capabilities such as scanning, copying, and faxing.
4. **User-Friendly Interface:** The printers come equipped with intuitive control panels and user interfaces that simplify navigation and operation.
5. **Eco-Friendly Options:** Many Pixma models feature energy-saving modes and the ability to print double-sided, reducing paper waste.

Accessing the Canon Pixma Manual

The Canon Pixma manual is typically provided in both physical and digital formats. Users can find the manual in several ways:

1. **In the Printer Box:** When you purchase a new Canon Pixma printer, the manual is often included in the box.
2. **Online Resources:** Canon's official website offers downloadable versions of user manuals for all Pixma models. Users can simply search for their specific model to access the appropriate manual.
3. **Mobile Applications:** Canon offers mobile apps that may include a digital version of the manual or provide guided troubleshooting steps.

Installing Your Canon Pixma Printer

Setting up your Canon Pixma printer correctly is crucial for ensuring optimal performance. Follow these steps to install your printer:

1. **Unboxing:** Carefully remove the printer from the box. Be sure to take out all protective materials and accessories.
2. **Connecting Power:** Plug the power cord into an electrical outlet and connect it to the printer. Turn on the printer.
3. **Installing Ink Cartridges:**
 - Open the ink cartridge door.
 - Unpack the cartridges and remove any protective tape.

- Insert the cartridges into their respective slots, ensuring they click into place.
4. Loading Paper: Adjust the paper guides in the tray and load the appropriate paper size.
 5. Establishing a Connection:
 - For USB Connection: Connect the printer to your computer using a USB cable.
 - For Wireless Connection: Follow the on-screen instructions to connect to your Wi-Fi network.

Refer to the specific section of your Canon Pixma manual for detailed instructions tailored to your model.

Setting Up Your Printer Software

To fully utilize your Canon Pixma printer, you need to install the appropriate software on your computer. This software allows you to manage printer settings, print documents, and scan images.

Steps to Install Printer Software

1. Download Software: Visit the Canon website, navigate to the support section, and locate the software for your specific model.
2. Run the Installer: Open the downloaded file and follow the installation prompts.
3. Connect Your Printer: During the installation process, you will be prompted to connect your printer (either via USB or Wi-Fi).
4. Complete Setup: Once the installation is finished, restart your computer if prompted. Your printer should now be ready for use.

Maintaining Your Canon Pixma Printer

Proper maintenance is essential to prolong the life of your Canon Pixma printer and ensure consistent print quality. Here are some key maintenance tips:

Regular Cleaning

1. Print Head Cleaning: Use the software utility to clean the print heads periodically. This helps prevent clogging and maintains print quality.
2. Exterior Cleaning: Wipe the printer's exterior with a soft, dry cloth to keep it dust-free.
3. Paper Path Cleaning: Regularly check for and remove any paper dust or debris from the paper path.

Replacing Ink Cartridges

- Monitor Ink Levels: Keep an eye on ink levels through the printer software. Replace cartridges when they are low to avoid print quality issues.
- Use Genuine Cartridges: For the best performance, use Canon's genuine ink cartridges designed for

your model.

Troubleshooting Common Issues

Even the best printers can encounter problems. Here are some common issues and solutions outlined in the Canon Pixma manual.

Printer Won't Print

- Check Connections: Ensure the printer is properly connected to the power source and your computer or network.
- Ink Levels: Verify that the ink cartridges are properly installed and have sufficient ink.
- Paper Jam: Inspect the printer for any paper jams and clear them if found.

Print Quality Issues

- Print Head Alignment: Use the printer's software to perform a print head alignment.
- Cleaning Cycle: Run a cleaning cycle through the printer software to clear any clogged nozzles.

Wireless Connection Problems

- Network Settings: Ensure that the printer is connected to the correct Wi-Fi network.
- Reboot Devices: Restart both your printer and Wi-Fi router to reset the connection.

Conclusion

Having a comprehensive understanding of your Canon printer Pixma manual can significantly enhance your printing experience. By following the installation, setup, maintenance, and troubleshooting guidelines provided, users can ensure their printers operate efficiently and effectively. Regularly consulting the manual will not only help in resolving issues but also in discovering new features that can make your printing tasks easier. Whether you are printing documents for work or creating high-quality photos, the Canon Pixma series offers the tools necessary to achieve outstanding results.

Frequently Asked Questions

Where can I find the manual for my Canon Pixma printer?

You can find the manual for your Canon Pixma printer on the official Canon website under the 'Support' section. Simply enter your printer model to access the manual.

What should I do if I lost my Canon Pixma printer manual?

If you've lost your manual, you can download a PDF version from the Canon support website by searching for your printer model.

How can I troubleshoot my Canon Pixma printer using the manual?

The manual includes a troubleshooting section that provides step-by-step instructions for common issues like paper jams, connectivity problems, and print quality issues.

Is there a difference between the online manual and the printed one for Canon Pixma printers?

The online manual is often updated with the latest information and solutions, while the printed manual may not have the most recent updates. It's best to refer to the online version for the most accurate guidance.

Can I use the Canon Pixma manual for multiple models?

While some features may be similar, it's recommended to use the manual specific to your printer model for the most accurate instructions and information.

What types of information are included in the Canon Pixma printer manual?

The manual includes setup instructions, maintenance tips, troubleshooting guides, and detailed specifications relevant to your specific model.

How do I reset my Canon Pixma printer using the manual?

The manual provides specific instructions for resetting your printer, which typically involves navigating to the settings menu and selecting the reset option. Refer to the troubleshooting section for detailed steps.

Find other PDF article:

<https://soc.up.edu.ph/03-page/files?trackid=odR24-9243&title=a-momentary-lapse-of-reason.pdf>

[Canon Printer Pixma Manual](#)

[Canon Nano USM](#)

Feb 19, 2016 · Canon MM Canon 5MM ...

11 50mm f1.4

Dec 31, 2013 · 50mmf1.4

50D

Oct 24, 2011 · 1.0.8 ml-*.fir BOOTDISK EOS_DEVELOP

[Canon \(EF\) EF 20-35mm/F2.8L](#)

Jun 29, 2004 · Canon 17-35F2.8L 16-35F2.8L USM 77mm

Err99

Mar 3, 2009 · Err99

[EF 35mm f/2 IS USM](#)

Jan 26, 2013 · 24 f/2.8 IS 28 f/2.8 IS 35 f/2 IS 35 f/2 IS

Looking for the Canon Printer Pixma manual? Discover how to easily set up

[Back to Home](#)