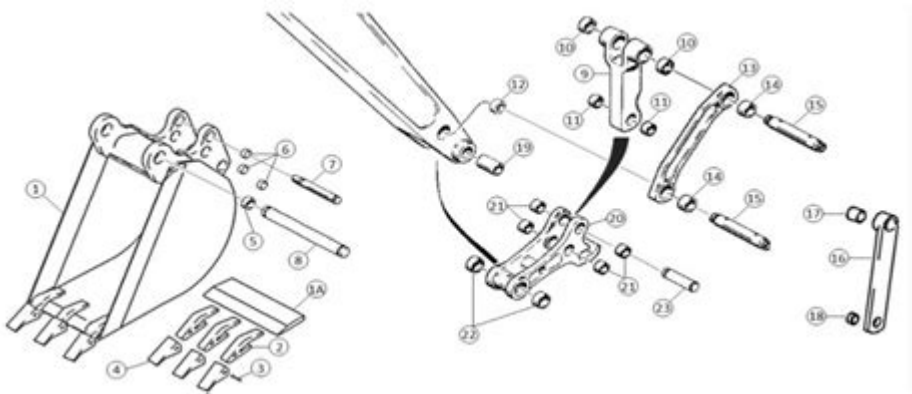


Case Backhoe Controls Diagram



Case backhoe controls diagram is an essential topic for anyone involved in operating or maintaining these versatile pieces of machinery. Backhoes are widely used in construction, landscaping, and various other industries, enabling operators to perform a range of tasks such as digging, lifting, and moving materials. Understanding how to interpret the controls of a Case backhoe can significantly enhance operational efficiency and safety. This article will delve into the components of a typical Case backhoe control system, providing a detailed overview of each control's function and the layout of a typical controls diagram.

Understanding the Basic Controls of a Case Backhoe

A Case backhoe is equipped with a variety of controls that govern its movement and operation. These controls can vary slightly depending on the model, but most share common features. Below are the main categories of controls found in a Case backhoe:

1. Loader Controls

The loader section of a backhoe is primarily responsible for lifting and moving materials. The controls for this section generally include:

- Loader Lift Control: This lever is used to raise and lower the front loader arm.
- Bucket Curl Control: This control adjusts the angle of the bucket, allowing operators to scoop, dump, or level materials.
- Loader Tilt Control: This is often integrated with the bucket curl control and allows for precise control over the bucket's angle.

2. Backhoe Controls

The backhoe section is used for digging and excavation tasks. Key controls include:

- **Boom Control:** This lever raises and lowers the boom, which is the arm that extends from the backhoe.
- **Swing Control:** This control allows the operator to swing the backhoe arm from side to side, providing a wider range of movement.
- **Dipper Control:** This lever controls the movement of the dipper stick, allowing operators to extend or retract the digging arm.
- **Bucket Control:** Similar to the loader's bucket curl control, this lever manipulates the bucket at the end of the dipper stick.

3. Travel Controls

Travel controls enable movement of the backhoe itself. These generally consist of:

- **Forward and Reverse Controls:** Typically located on the right-hand side of the operator's station, these controls allow the operator to move the backhoe forward or backward.
- **Steering Controls:** These controls may be integrated with the travel controls or may be separate, depending on the machine's design.

The Importance of the Controls Diagram

A Case backhoe controls diagram is crucial for operators to understand the layout and function of each control. Here are some reasons why having access to this diagram is beneficial:

- **Safety:** Understanding the controls reduces the risk of accidents and injuries on the job site.
- **Efficiency:** Familiarity with the controls allows operators to work more effectively, completing tasks in less time.
- **Maintenance:** Knowing the function of each control aids in troubleshooting and maintenance, helping to keep the machine in optimal working condition.

Components of a Case Backhoe Controls Diagram

A well-structured controls diagram will typically include several key components:

1. Control Layout

The layout provides a visual representation of where each control is located in relation to the operator's seat. This section is crucial for new operators who may be unfamiliar with the machine.

2. Control Labels

Each control should be clearly labeled with its function. For example, the loader lift control should be marked as such, while the bucket curl control should also have its purpose indicated. Some diagrams may use color-coding or symbols to enhance understanding.

3. Operational Instructions

Some diagrams include brief operational instructions or tips, illustrating how best to use certain controls. This can be especially useful for operators who may not have extensive experience with backhoes.

4. Safety Warnings

Safety warnings are often included to alert operators to potential hazards associated with the operation of specific controls. These warnings emphasize safe operation practices to prevent accidents.

How to Read a Case Backhoe Controls Diagram

Reading a controls diagram may seem challenging at first, but with some practice, operators can quickly become proficient. Here are some tips to effectively interpret the diagram:

1. **Familiarize Yourself with Symbols:** Most diagrams use standardized symbols for various controls. Familiarize yourself with these symbols to understand their meanings quickly.
2. **Compare with Actual Controls:** As you study the diagram, compare it with the actual controls on the machine. This will help solidify your understanding of where each control is located.
3. **Practice Operations:** Once you have a good grasp of the diagram, practice operating the backhoe using the controls. This hands-on experience will reinforce your learning.
4. **Consult the Manual:** Always refer to the operator's manual for your specific Case backhoe model for detailed information about controls and operations.

Operator Training and Certification

Understanding the Case backhoe controls diagram is just one part of becoming a skilled operator.

Many organizations and companies require operators to undergo training and certification programs. Here are some key points regarding operator training:

1. Training Programs

Various training programs are available for backhoe operators, ranging from informal on-the-job training to formal courses offered by technical schools and trade associations. These programs often cover:

- Safe operation practices
- Understanding controls
- Maintenance procedures
- Troubleshooting common issues

2. Certification

Certification is often a requirement for professional operators. It demonstrates a level of competence and knowledge that is crucial for safety and effectiveness on the job. Certification programs can include both written exams and practical assessments.

3. Continuing Education

The construction industry is continually evolving, with new technologies and techniques. Continuing education ensures that operators remain up-to-date with the latest practices and equipment, including any changes to control systems.

Conclusion

A thorough understanding of the **Case backhoe controls diagram** is essential for anyone looking to operate this type of machinery safely and effectively. By learning how to interpret the controls, operators can enhance their efficiency, improve safety on the job site, and ensure that their backhoe remains in optimal condition. As with any machinery, proper training and certification are crucial for success, ensuring that operators are well-prepared to handle the challenges of their tasks. Whether you are a seasoned professional or a newcomer to the industry, taking the time to learn about the controls of a Case backhoe can lead to improved performance and safety in your work.

Frequently Asked Questions

What is a case backhoe controls diagram?

A case backhoe controls diagram is a visual representation that illustrates the layout and functions of

various controls on a Case backhoe loader, including levers, pedals, and switches.

Where can I find a case backhoe controls diagram?

You can find a case backhoe controls diagram in the operator's manual for the specific model, on the manufacturer's website, or through online forums dedicated to heavy machinery.

How do I read a case backhoe controls diagram?

To read a case backhoe controls diagram, familiarize yourself with the symbols and labels representing each control, and refer to the accompanying legend or key for clarification on function and operation.

What are the main controls typically shown in a case backhoe controls diagram?

Main controls typically include the boom and dipper stick levers, bucket control lever, steering controls, hydraulic controls, and various switches for lights, horn, and other functions.

Why is it important to understand the controls on a case backhoe?

Understanding the controls on a case backhoe is crucial for safe and efficient operation, as it helps operators perform tasks accurately while minimizing the risk of accidents and equipment damage.

Are there differences in controls among various case backhoe models?

Yes, there can be differences in controls among various Case backhoe models, so it is essential to refer to the specific controls diagram for the model you are operating.

Find other PDF article:

<https://soc.up.edu.ph/41-buzz/files?dataid=dc007-4526&title=miller-and-levine-biology-teacher-resources.pdf>

Case Backhoe Controls Diagram

Tracteurs - Case IH

Case IH propose une gamme complète de tracteurs pour toutes les utilisations. Découvrez tous les tracteurs.

Traktoren & landwirtschaftliche Geräte | Case IH

Besuchen Sie die Website von Case IH und entdecken Sie alle unsere Produkte: Traktoren, Erntemaschinen, Ballenpressen, Lader und vieles mehr.

Ciągniki i sprzęt rolniczy | CASE IH

Odwiedź stronę internetową Case IH i odkryj wszystkie nasze produkty: ciągniki, sprzęt żniwny, prasy, ładowarki i wiele innych.

Harvesting, Planting, & Farming Equipment - Canada | Case IH

Case IH is a global leader in agriculture and farm equipment. Compare tractors, planting, harvesting, and many other products on CASE IH website.

CASE IH - Choose your market

Explore Case IH's global website to choose your country and discover agricultural machinery, equipment, and services tailored to your needs.

Tractoren - Case IH

De Case IH Quantum-tractoren van 80-120 pk krijgen in 2025 nieuwe functies die extra mogelijkheden en prestaties bieden voor deze gespecialiseerde modellen. De upgrades zijn ...

Case IH Brasil | Máquinas Agrícolas e Tecnologia para o Campo

Explore a Case IH Brasil, líder em máquinas agrícolas. Descubra tratores, colheitadeiras, pulverizadores, plantadeiras e mais, com tecnologia de ponta para aumentar sua ...

Harvesting, Planting, & Farming Equipment | Case IH

Case IH is a global leader in agriculture and farm equipment. Compare tractors, planting, harvesting, and many other products on CASE IH website.

Genuine Parts | Parts & Services | Case IH

With the range of Genuine Parts, Case IH is committed to optimizing your performance: batteries, belts, bearings, engine air filters, fuel filters, seat covers & floor mats and much more.

Tractors & Farm Equipment | CASE IH

Visit Case IH website and discover all our products: Tractors, Harvesting equipment, Baler, Loaders and much more.

Tracteurs - Case IH

Case IH propose une gamme complète de tracteurs pour toutes les utilisations. Découvrez tous les tracteurs.

Traktoren & landwirtschaftliche Geräte | Case IH

Besuchen Sie die Website von Case IH und entdecken Sie alle unsere Produkte: Traktoren, Erntemaschinen, Ballenpressen, Lader und vieles mehr.

Ciągniki i sprzęt rolniczy | CASE IH

Odwiedź stronę internetową Case IH i odkryj wszystkie nasze produkty: ciągniki, sprzęt żniwny, prasy, ładowarki i wiele innych.

Harvesting, Planting, & Farming Equipment - Canada | Case IH

Case IH is a global leader in agriculture and farm equipment. Compare tractors, planting, harvesting, and many other products on CASE IH website.

CASE IH - Choose your market

Explore Case IH's global website to choose your country and discover agricultural machinery, equipment, and services tailored to your needs.

Tractoren - Case IH

De Case IH Quantum-tractoren van 80-120 pk krijgen in 2025 nieuwe functies die extra mogelijkheden en prestaties bieden voor deze gespecialiseerde modellen. De upgrades zijn ...

Case IH Brasil | Máquinas Agrícolas e Tecnologia para o Campo

Explore a Case IH Brasil, líder em máquinas agrícolas. Descubra tratores, colheitadeiras, pulverizadores, plantadeiras e mais, com tecnologia de ponta para aumentar sua ...

Harvesting, Planting, & Farming Equipment | Case IH

Case IH is a global leader in agriculture and farm equipment. Compare tractors, planting, harvesting, and many other products on CASE IH website.

Genuine Parts | Parts & Services | Case IH

With the range of Genuine Parts, Case IH is committed to optimizing your performance: batteries, belts, bearings, engine air filters, fuel filters, seat covers & floor mats and much more.

Tractors & Farm Equipment | CASE IH

Visit Case IH website and discover all our products: Tractors, Harvesting equipment, Baler, Loaders and much more.

Explore our detailed case backhoe controls diagram to enhance your operating skills. Learn more about each function and maximize your efficiency today!

[Back to Home](#)