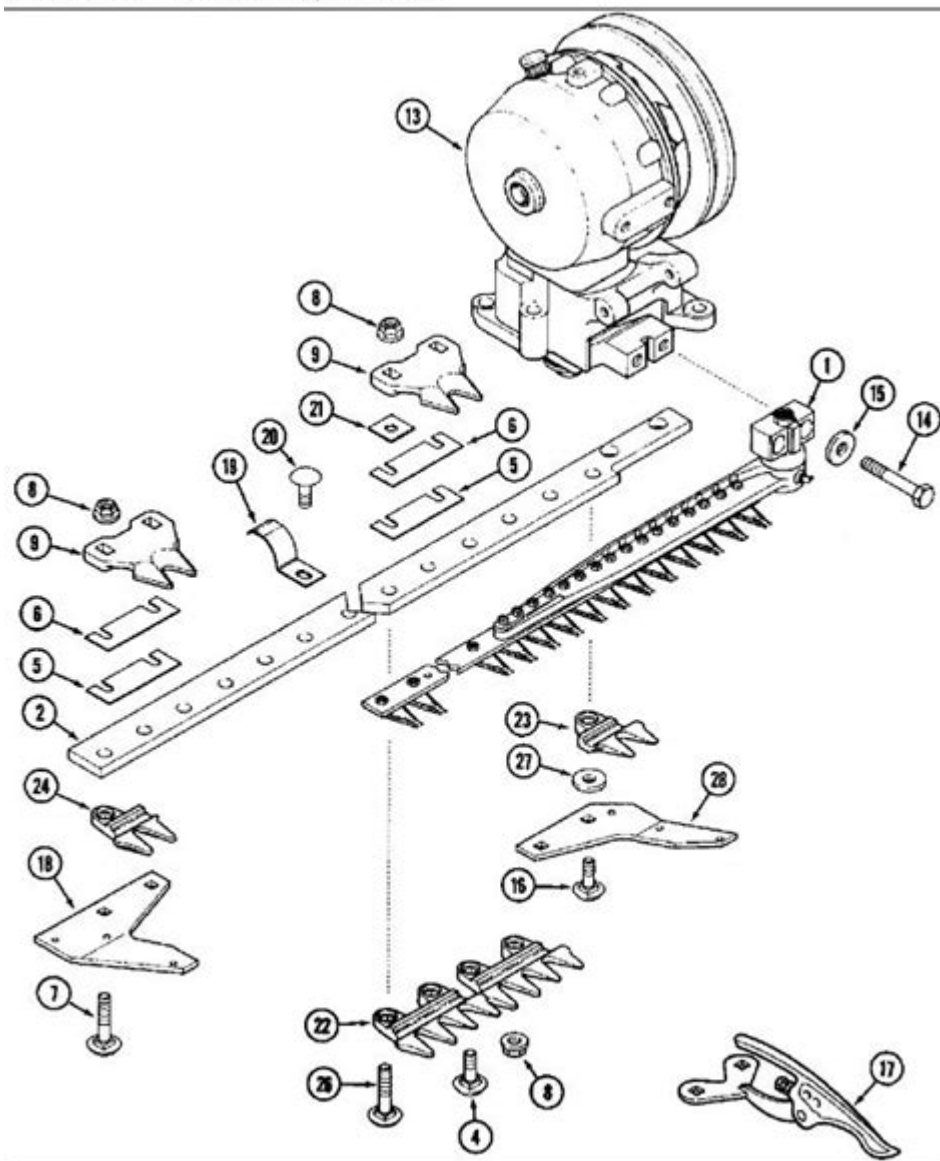


# Case Ih 1020 Header Parts Diagram

1020 GRAIN HEADER (S/N JJC0215001 TO JJC0227000)  
9B-02 KNIFE GUARDS AND CUTTER BAR, 1.5 INCH KNIFE



**Case IH 1020 header parts diagram** is an essential resource for farmers and technicians who rely on this equipment for their harvesting operations. The Case IH 1020 header is renowned for its efficiency, durability, and versatility. It is designed to work seamlessly with Case IH combines, providing superior performance in a variety of crop conditions. Understanding the parts diagram of the 1020 header can significantly enhance maintenance practices, aid in troubleshooting, and ensure optimal performance during harvest. This article will delve into the parts diagram of the Case IH 1020 header, explaining the key components, their functions, and maintenance tips.

# Overview of the Case IH 1020 Header

The Case IH 1020 header is a platform-style header commonly used for harvesting grain crops such as wheat, barley, and oats. It is designed to efficiently cut and gather crops, allowing them to be transferred to the combine for threshing. The design of the 1020 header accommodates various crop conditions, making it a popular choice among farmers.

## Key Features of the Case IH 1020 Header

1. Versatile Cutting Widths: The Case IH 1020 header comes in different cutting widths, typically ranging from 15 to 30 feet, allowing farmers to choose the right size for their operations.
2. Floating Cutter Bar: The floating cutter bar design enables the header to adjust to the contours of the field, ensuring a clean cut even in uneven terrain.
3. Effective Feed System: The header features an efficient feed system that ensures a smooth transition of cut crops to the combine, reducing the risk of blockages.
4. Durable Construction: Built with high-quality materials, the 1020 header is designed to withstand the rigors of harvesting, providing longevity and reliability.

## Understanding the Parts Diagram

The parts diagram of the Case IH 1020 header is an intricate illustration that provides a detailed view of all the components involved in its operation. Understanding this diagram is crucial for effective maintenance and repairs.

## Main Components of the Case IH 1020 Header

1. Cutter Bar Assembly:
  - The cutter bar is the primary component responsible for cutting the crop. It consists of blades that move back and forth to shear the plants.
  - Key parts include:
    - Knives: Sharp components that do the cutting.
    - Sickle Section: Holds the knives in place and facilitates cutting.
2. Auger Assembly:
  - The auger is responsible for moving the cut crop from the header to the combine.
  - Key parts include:
    - Auger Flighting: Spiral metal strips that move the crop.

- Drive Shaft: Powers the auger.

### 3. Header Frame:

- The main structure that supports the entire header.
- It includes mounting points for various components and ensures stability during operation.

### 4. Gathering Chains:

- These chains help in gathering the cut crop and transporting it towards the auger assembly.
- They are designed with tines that effectively grasp the crop.

### 5. Skid Shoes:

- These components help the header glide across the ground, ensuring a consistent cutting height.

### 6. Drive System:

- The drive system powers the various components of the header.
- It includes:
  - Gearbox: Transfers power from the combine to the header.
  - Pulleys and Belts: Facilitate the movement of different parts.

### 7. Hydraulic System:

- The hydraulic system controls the height and tilt of the header, allowing for adjustments based on field conditions.

## Importance of the Parts Diagram

The parts diagram of the Case IH 1020 header serves multiple purposes:

### 1. Maintenance:

- Regular maintenance is crucial for ensuring the longevity and efficiency of the header. The parts diagram helps technicians identify components that require regular checks or replacements.

### 2. Troubleshooting:

- When issues arise, the parts diagram can assist in pinpointing the problem area. Whether it's a blockage in the auger or a malfunctioning drive system, understanding the layout of the parts can expedite repairs.

### 3. Ordering Parts:

- For effective repairs, knowing the exact part numbers and their locations is essential. The parts diagram provides this information, making it easier to order the correct components.

### 4. Training:

- For new operators or technicians, the parts diagram serves as an educational tool, helping them familiarize themselves with the header's components and their functions.

# Common Maintenance Tips for the Case IH 1020 Header

To ensure the Case IH 1020 header operates efficiently, regular maintenance is vital. Here are some key maintenance tips:

## 1. Regular Inspections:

- Inspect the cutter bar for wear and tear. Replace knives and sickle sections as needed.
- Check the auger for signs of damage or blockage.

## 2. Lubrication:

- Keep all moving parts well-lubricated to reduce friction and wear. Pay special attention to the drive system and gathering chains.

## 3. Adjustments:

- Ensure that the header is properly adjusted to the field's height and tilt. Regularly check the skid shoes and hydraulic system for optimal operation.

## 4. Cleaning:

- Clean the header after use to prevent the buildup of debris, which can lead to corrosion and mechanical issues.

## 5. Seasonal Maintenance:

- Before the harvesting season begins, conduct a thorough check of all components, replacing any worn parts and ensuring everything is in working order.

## Conclusion

Understanding the Case IH 1020 header parts diagram is essential for anyone involved in harvesting operations with this equipment. From identifying key components to performing regular maintenance, having a comprehensive grasp of the parts and their functions can lead to improved efficiency and reduced downtime during the critical harvesting season. By adhering to maintenance tips and utilizing the parts diagram for troubleshooting and repairs, farmers can ensure their Case IH 1020 header remains a reliable asset in their agricultural operations. Ultimately, investing time in understanding and maintaining this equipment can enhance productivity and yield, making it an invaluable resource for modern farming.

## Frequently Asked Questions

## **What is a Case IH 1020 header parts diagram used for?**

A Case IH 1020 header parts diagram is used to identify and locate various components of the header assembly, helping with maintenance, repair, and replacement of parts.

## **Where can I find a detailed parts diagram for the Case IH 1020 header?**

You can find a detailed parts diagram for the Case IH 1020 header in the official Case IH parts manuals, on the Case IH website, or through authorized dealers.

## **What are the common issues that can be diagnosed using the Case IH 1020 header parts diagram?**

Common issues include misalignment, wear and tear on specific components, and malfunctioning parts, which can be identified by referencing the parts diagram.

## **Are there online resources for obtaining the Case IH 1020 header parts diagram?**

Yes, online resources include agricultural equipment forums, repair websites, and the Case IH official website, where diagrams are often available for download or viewing.

## **How can I effectively use the Case IH 1020 header parts diagram for repairs?**

To effectively use the parts diagram for repairs, first identify the part number of the component you need to replace, then follow the diagram to understand how it fits within the overall assembly.

Find other PDF article:

<https://soc.up.edu.ph/49-flash/pdf?dataid=NgS56-8624&title=publication-manual-of-the-american-psychological-association-citation.pdf>

## **Case Ih 1020 Header Parts Diagram**

### **Tracteurs - Case IH**

Case IH propose une gamme complète de tracteurs pour toutes les utilisations. Découvrez tous les tracteurs.

### **Traktoren & landwirtschaftliche Geräte | Case IH**

Besuchen Sie die Website von Case IH und entdecken Sie alle unsere Produkte: Traktoren, Erntemaschinen, ...

### *Ciągniki i sprzęt rolniczy | CASE IH*

Odwiedź stronę internetową Case IH i odkryj wszystkie nasze produkty: ciągniki, sprzęt żniwny, prasy, ładowarki i wiele ...

### **Harvesting, Planting, & Farming Equipment - Canada | Case IH**

Case IH is a global leader in agriculture and farm equipment. Compare tractors, planting, harvesting, and many other ...

### **CASE IH - Choose your market**

Explore Case IH's global website to choose your country and discover agricultural machinery, equipment, ...

### **Tracteurs - Case IH**

Case IH propose une gamme complète de tracteurs pour toutes les utilisations. Découvrez tous les tracteurs.

### **Traktoren & landwirtschaftliche Geräte | Case IH**

Besuchen Sie die Website von Case IH und entdecken Sie alle unsere Produkte: Traktoren, Erntemaschinen, Ballenpressen, Lader und vieles mehr.

### *Ciągniki i sprzęt rolniczy | CASE IH*

Odwiedź stronę internetową Case IH i odkryj wszystkie nasze produkty: ciągniki, sprzęt żniwny, prasy, ładowarki i wiele innych.

### **Harvesting, Planting, & Farming Equipment - Canada | Case IH**

Case IH is a global leader in agriculture and farm equipment. Compare tractors, planting, harvesting, and many other products on CASE IH website.

### **CASE IH - Choose your market**

Explore Case IH's global website to choose your country and discover agricultural machinery, equipment, and services tailored to your needs.

### **Tractoren - Case IH**

De Case IH Quantum-tractoren van 80-120 pk krijgen in 2025 nieuwe functies die extra mogelijkheden en prestaties bieden voor deze gespecialiseerde modellen. De upgrades zijn ...

### Case IH Brasil | Máquinas Agrícolas e Tecnologia para o Campo

Explore a Case IH Brasil, líder em máquinas agrícolas. Descubra tratores, colheitadeiras, pulverizadores, plantadeiras e mais, com tecnologia de ponta para aumentar sua ...

### *Harvesting, Planting, & Farming Equipment | Case IH*

Case IH is a global leader in agriculture and farm equipment. Compare tractors, planting, harvesting, and many other products on CASE IH website.

### **Genuine Parts | Parts & Services | Case IH**

With the range of Genuine Parts, Case IH is committed to optimizing your performance: batteries, belts, bearings, engine air filters, fuel filters, seat covers & floor mats and much more.

## Tractors & Farm Equipment | CASE IH

Visit Case IH website and discover all our products: Tractors, Harvesting equipment, Baler, Loaders and much more.

Explore our detailed Case IH 1020 header parts diagram to help you identify components and optimize your equipment. Learn more for efficient harvesting solutions!

[Back to Home](#)