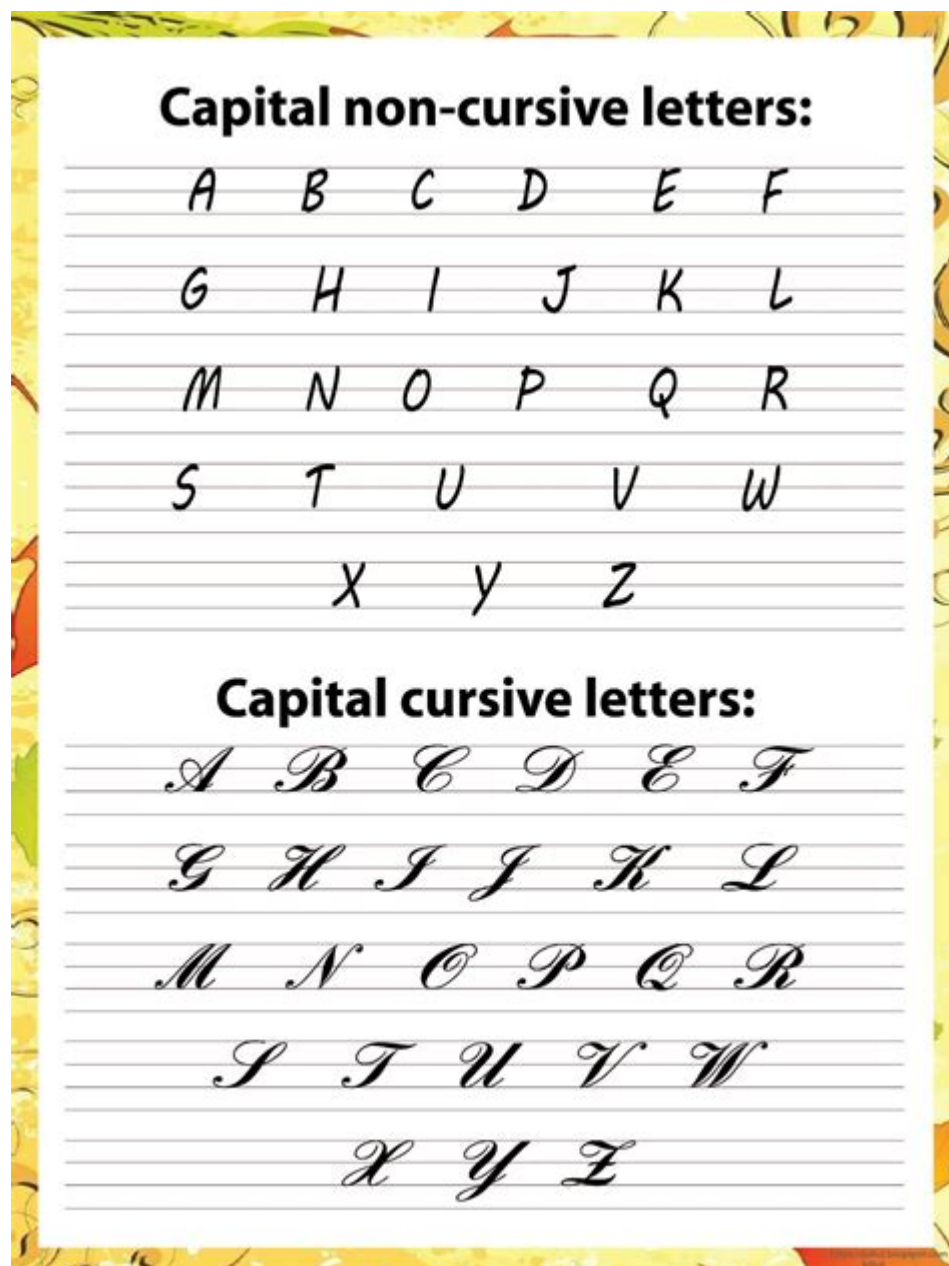


# Capital Letter I In Cursive



**Capital letter i in cursive** is an essential aspect of cursive writing that often intrigues students and calligraphers alike. Learning how to write this letter beautifully can enhance your handwriting and make your written communication more elegant. This article will delve into the intricacies of the capital letter I in cursive, its significance, and tips for mastering its form.

## Understanding Cursive Writing

Cursive writing is a style of penmanship where the letters are connected, allowing for faster writing. It is often taught in elementary schools to help students develop a fluid and efficient way of writing. The capital letter I, like other cursive letters, has its unique form and flow.

# The Importance of Cursive Writing

Cursive writing is not just about aesthetics; it serves several important purposes:

- **Improved Speed:** Cursive writing allows for quicker writing, as the pen does not have to lift between letters.
- **Enhanced Legibility:** When properly executed, cursive writing can be easier to read than printed letters.
- **Personal Expression:** Cursive handwriting can be uniquely personalized, reflecting an individual's style.
- **Fine Motor Skills Development:** Learning cursive helps improve fine motor skills in children.

## The Structure of the Capital Letter I in Cursive

The capital letter I in cursive is one of the more straightforward letters, but it still requires attention to detail. Understanding its structure helps in achieving a graceful and legible form.

### Key Features of Capital Letter I in Cursive

1. **Initial Stroke:** The letter begins with a downward stroke that starts slightly above the baseline.
2. **Loop:** Following the downward stroke, a loop is formed at the top; this is where the letter takes its cursive flair.
3. **Exit Stroke:** After the loop, the letter has a slight upward exit stroke that connects to the next letter in a word.

### Common Variations

While the standard cursive capital I is widely recognized, there are variations that you might come across. Some of these include:

- **Elegant Loop:** This variation features a larger loop at the top, giving it a more ornate appearance.
- **Simple Form:** A more straightforward version that uses minimal loops, often preferred for quick writing.

## Tips for Writing a Capital Letter I in Cursive

Mastering the cursive capital I is all about practice and technique. Here are some tips to help you refine your skills:

## 1. Use the Right Tools

The choice of writing instrument can significantly influence your cursive writing. Consider the following:

- Fountain Pens: These pens can create smooth lines and allow for controlled pressure.
- Gel Pens: These provide consistent ink flow and vibrant colors.
- Pencils: Ideal for practice, as they are easy to erase.

## 2. Maintain Proper Posture

Good posture is crucial for effective writing. Ensure that:

- You sit up straight with your feet flat on the ground.
- Your writing surface is at an appropriate height.
- Your hand is positioned comfortably over the paper.

## 3. Practice Regularly

Repetition is key to mastering cursive writing. Here are some effective practice methods:

- Repetitive Drills: Write the capital I multiple times on a sheet of paper, focusing on maintaining the same height and loop.
- Connect to Other Letters: Practice writing words that start with I, such as "Italy" or "Ice," to get used to connecting letters seamlessly.
- Use Worksheets: Printable cursive worksheets can provide guided practice for beginners.

## 4. Focus on Fluidity

Cursive writing is all about fluid movement. Here's how to achieve that:

- Keep Your Hand Moving: Avoid lifting the pen unnecessarily, as this disrupts the flow.
- Practice with Music: Writing to a rhythm can help develop a more fluid style.

## Common Mistakes to Avoid

When practicing the capital letter I in cursive, be aware of common pitfalls:

- **Inconsistent Size:** Ensure that the letter maintains a consistent height across different instances.
- **Overly Complicated Loops:** While embellishments can be beautiful, ensure they do not compromise legibility.
- **Incorrect Slant:** The slant of the letters should be uniform, typically around 10-15 degrees to the right.

## Incorporating the Capital Letter I into Your Writing

Once you've mastered the cursive capital I, it's essential to incorporate it into your everyday writing. Here are some practical applications:

### 1. Personal Notes and Letters

Using cursive writing can add a personal touch to letters and notes, making them feel more heartfelt.

### 2. Creative Projects

Whether you are creating an art piece or designing a greeting card, incorporating cursive writing can enhance the visual appeal.

### 3. Daily Journaling

Practice cursive writing daily by keeping a journal. This can help reinforce your skills while allowing for personal expression.

## Conclusion

The capital letter I in cursive may seem simple, but mastering it requires practice, attention to detail, and a willingness to develop your style. By following the tips and techniques outlined in this article, you can enhance your cursive writing skills, making your handwriting not only more beautiful but also more functional. Ultimately, cursive writing is a valuable skill that adds a personal touch to your written communication, and the capital letter I is just the beginning of your cursive journey.

# Frequently Asked Questions

## How do you write a capital letter 'I' in cursive?

To write a capital letter 'I' in cursive, start with a small upward stroke, then draw a rounded loop that descends and curves back up, finishing with a slight tail that extends to the right.

## What are some common mistakes when writing a cursive capital 'I'?

Common mistakes include making the loop too small, not connecting it properly to the next letter, or failing to maintain the consistent slant typical of cursive writing.

## Can the cursive capital 'I' be connected to other letters?

Yes, the cursive capital 'I' can be connected to other letters. The tail at the end allows for a smooth transition into subsequent lowercase or uppercase letters.

## Is there a specific slant for the cursive capital 'I'?

Yes, the cursive capital 'I' typically has a rightward slant, which is consistent with the overall slant of cursive writing.

## What is the proper way to practice writing a cursive capital 'I'?

To practice, start by drawing several lines of the cursive capital 'I' on lined paper, focusing on maintaining the correct slant and proportions. Gradually connect it with other letters as you become more comfortable.

## Are there different styles of cursive capital 'I'?

Yes, different cursive styles can feature variations in the loop size and tail length of the capital 'I', allowing for personal expression while maintaining readability.

## What materials are best for practicing cursive writing, including the capital 'I'?

Pencil and lined paper are ideal for practicing cursive writing. For more advanced practice, fountain pens or gel pens can add a nice touch due to their smooth flow.

## How does the cursive capital 'I' compare to its print version?

The cursive capital 'I' is more stylized and fluid compared to the print version, which is more straightforward and block-like. The cursive version has a loop and a tail, while the print version is simply a straight line.

# Why is learning cursive, including the capital 'I', important?

Learning cursive is important as it enhances fine motor skills, promotes brain development through the practice of writing, and allows for more personalized and artistic forms of communication.

Find other PDF article:

<https://soc.up.edu.ph/10-plan/pdf?dataid=Cnh92-3350&title=butter-chicken-recipe-sanjeev-kapoor.pdf>

## Capital Letter I In Cursive

### Secured, Guaranteed and Rewards Credit Cards | Capital One Canada

Mastercard is a registered trademark, and the circles design is a trademark of Mastercard International Incorporated. All trademarks ...

### *Accédez à nos services bancaires en ligne | Capital One Canada*

Grâce aux services bancaires en ligne, vous bénéficiez d'un accès sécuritaire à votre compte Capital One. Vous pouvez également ...

### **Sign in to Online Banking | Capital One Canada**

With online banking, you have safe and secure access to your Capital One account. You can also view transactions, check your balance ...

### *Online banking - Capital One Canada*

How to set up, sign in to and manage your account online or through the Capital One Canada Mobile App. Have all your account ...

### How to Sign in to Online Banking - Capital One Canada

You can sign in to online banking by visiting the Capital One sign in page or through the Capital One mobile app.

### **Secured, Guaranteed and Rewards Credit Cards | Capital One ...**

Mastercard is a registered trademark, and the circles design is a trademark of Mastercard International Incorporated. All trademarks used herein are owned by their respective entities. ...

### **Accédez à nos services bancaires en ligne | Capital One Canada**

Grâce aux services bancaires en ligne, vous bénéficiez d'un accès sécuritaire à votre compte Capital One. Vous pouvez également consulter vos transactions, vérifier votre solde et la date ...

### Sign in to Online Banking | Capital One Canada

With online banking, you have safe and secure access to your Capital One account. You can also view transactions, check your balance and payment due date, sign up for alerts and more.

### **Online banking - Capital One Canada**

How to set up, sign in to and manage your account online or through the Capital One Canada Mobile App. Have all your account information at your fingertips.

### *How to Sign in to Online Banking - Capital One Canada*

You can sign in to online banking by visiting the Capital One sign in page or through the Capital One mobile app.

### **Activer votre carte de crédit | Capital One Canada**

Nouveaux et nouvelles titulaires : si vous n'avez pas déjà configuré votre NIP, il arrivera par la poste, séparément de votre carte. Ouvrir une session Vous n'avez pas encore de nom ...

### **Activate your credit card | Capital One Canada**

Let's activate your new card! You'll need your card and PIN to continue. New cardholders: if you haven't set up your PIN already, it will arrive in the mail separately from your card. Sign in ...

### **How to Sign in to the Capital One Canada App**

Sign in to the app with the same username and password that you use for your Capital One online banking. Sign up for online banking now if you don't have an account yet.

### Get the Mobile App | Online Banking | Capital One Canada

Track spending, get account alerts, check your credit score and more. Download the app for Android and iOS today.

### Get Account Support | Capital One Canada

Jun 11, 2025 · If you have questions about your Capital One account, chances are you'll find answers in our Support Centre. We have a wealth of articles to help you get the answers you ...

Learn how to write the capital letter I in cursive with our step-by-step guide. Perfect your cursive skills today! Discover how to master it now!

[Back to Home](#)