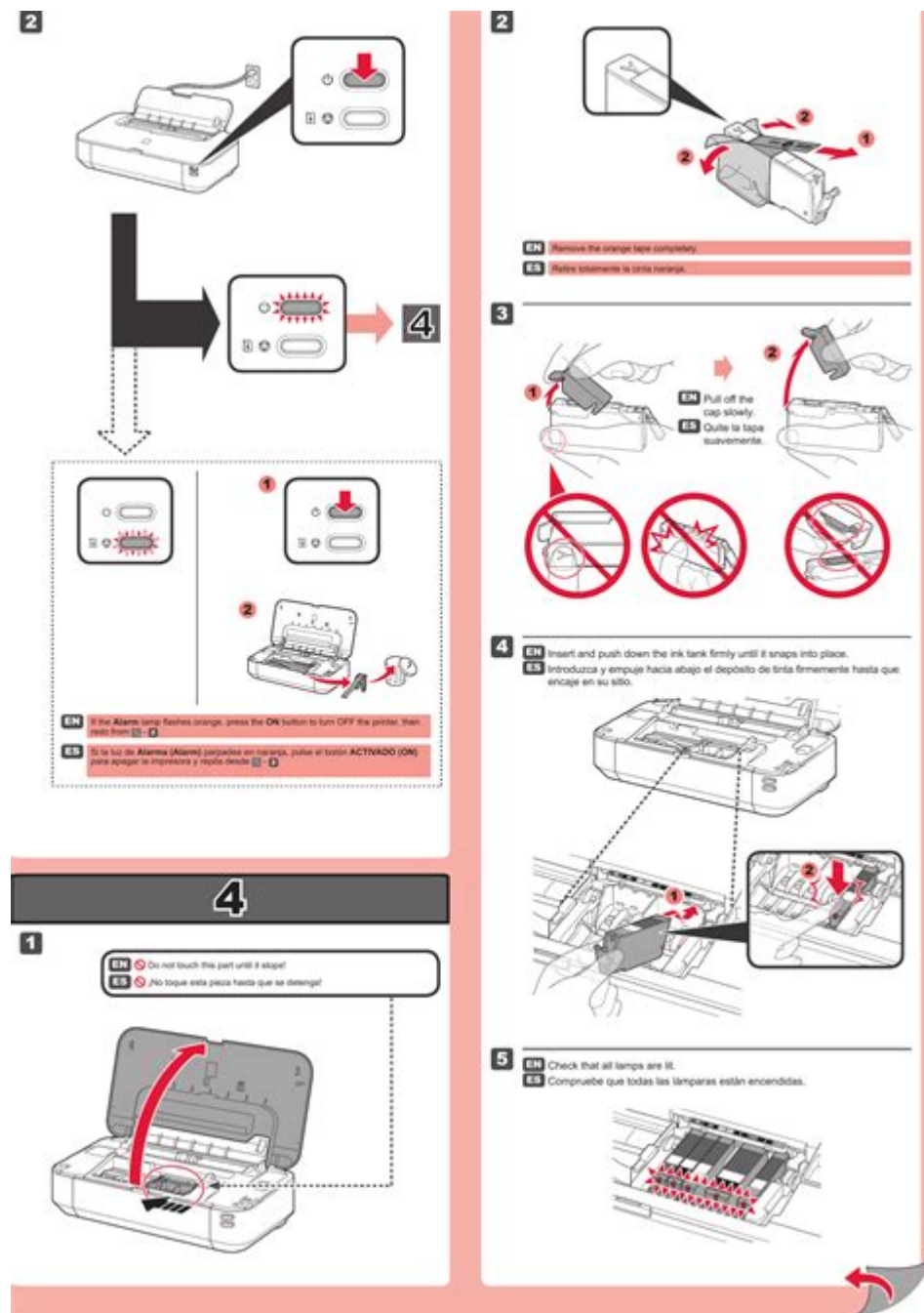


Canon Pixma Ix6820 Manual



Canon Pixma IX6820 Manual is an essential resource for anyone who owns this versatile wide-format printer. The Canon Pixma IX6820 is designed for professionals, artists, and home users alike who require high-quality printing for photos, graphics, and documents. This manual provides a comprehensive understanding of the printer's features, setup, maintenance, and troubleshooting, ensuring that users can maximize their printing experience. In this article, we will delve into various aspects of the Canon Pixma IX6820, including its specifications, setup process, features, maintenance tips, and frequently asked questions.

Specifications of Canon Pixma IX6820

The Canon Pixma IX6820 is known for its impressive specifications that make it stand out among other printers in its class. Below are some key specifications:

Print Technology

- Inkjet Technology: Utilizes a 5-color individual ink system that produces vibrant colors and deep blacks.
- Print Resolution: Up to 4800 x 1200 dpi (dots per inch) for stunning image clarity.

Print Speed

- Black and White: Approximately 14.5 pages per minute (ppm).
- Color: Approximately 10.4 ppm.

Media Handling

- Paper Sizes: Supports a variety of paper sizes, including letter, legal, 11" x 17", and other custom sizes up to 13" x 19".
- Paper Capacity: Can hold up to 150 sheets of plain paper in the front tray and 20 sheets of 13" x 19" paper.

Connectivity Options

- Wired: USB 2.0.
- Wireless: Wi-Fi, allowing for easy mobile printing via AirPrint, Google Cloud Print, and Canon's PRINT app.

Dimensions and Weight

- Size: Approximately 23.3" x 12.3" x 6.3".
- Weight: About 18.1 lbs.

Setting Up Your Canon Pixma IX6820

Setting up your Canon Pixma IX6820 is a straightforward process. Follow these steps to ensure a smooth installation:

Unboxing and Initial Setup

1. Unbox the Printer: Carefully remove the printer from the box and remove all protective materials.

2. Locate Accessories: Ensure you have the power cord, ink cartridges, and setup CD (if applicable).
3. Position the Printer: Place the printer on a flat, stable surface near your computer and power outlet.

Connecting the Printer

1. Power Connection: Plug the power cord into the printer and the wall outlet.
2. Turn on the Printer: Press the power button to turn on the printer.
3. Load Paper: Open the paper tray and load it with the desired size of paper.

Installing Ink Cartridges

1. Open the Ink Cartridge Cover: Wait until the print head moves to the replacement position.
2. Insert Cartridges: Remove the protective tape from the cartridges and insert them into their respective slots. Ensure they click into place.
3. Close the Cover: Once all cartridges are installed, close the cover.

Software Installation

1. Use Setup CD or Download Software: If you have the setup CD, insert it into your computer. Alternatively, visit the Canon website to download the latest drivers and software.
2. Follow On-Screen Instructions: Complete the installation process by following the prompts.

Connecting to Wi-Fi (if applicable)

1. Access Wireless Settings: Navigate to the printer's control panel and select 'Wi-Fi Setup.'
2. Select Network: Choose your Wi-Fi network from the list and enter the password.
3. Complete Connection: Once connected, a confirmation will appear on the display.

Features of Canon Pixma IX6820

The Canon Pixma IX6820 is packed with features that enhance its functionality. Here are some of the standout features:

High-Quality Printing

- Exceptional Color Accuracy: The 5-color ink system ensures that prints are vibrant and lifelike.
- Wide Format Printing: Capable of printing up to 13" x 19", making it ideal for posters and larger projects.

Mobile Printing Capabilities

- Apple AirPrint: Print directly from your iPhone or iPad without additional drivers.
- Google Cloud Print: Print from anywhere using Google services.

- Canon PRINT App: A dedicated app for mobile devices that allows for easy printing and scanning.

Easy Navigation and User-Friendly Design

- Control Panel: An intuitive control panel with an LCD display for easy navigation.
- Quiet Mode: Reduces noise during printing, making it suitable for quiet environments.

Maintenance Tips for Canon Pixma IX6820

To ensure your Canon Pixma IX6820 continues to perform optimally, regular maintenance is essential. Here are some tips:

Cleaning the Print Head

- Automatic Cleaning: Access the maintenance section via the control panel and select 'Cleaning' to initiate an automatic cleaning cycle.
- Manual Cleaning: For stubborn clogs, remove the print head and clean it gently with a soft, lint-free cloth.

Replacing Ink Cartridges

- Monitor Ink Levels: Keep an eye on the ink levels through the printer software on your computer.
- Use Genuine Canon Cartridges: For the best quality and performance, always use original Canon ink cartridges.

Regular Updates

- Firmware Updates: Check the Canon website regularly for firmware updates to ensure your printer has the latest features and bug fixes.

Troubleshooting Common Issues

Even the best printers may encounter issues. Here are some common problems with the Canon Pixma IX6820 and their solutions:

Print Quality Issues

- Problem: Prints appear faded or streaky.
- Solution: Run a print head cleaning cycle and check the ink levels. If necessary, replace the cartridges.

Connection Problems

- Problem: Unable to connect to Wi-Fi.
- Solution: Ensure that the printer is within range of the router and that you are entering the correct Wi-Fi password. Restart both the printer and the router if needed.

Paper Jams

- Problem: Paper is jammed in the printer.
- Solution: Turn off the printer and carefully remove the jammed paper from the paper path. Check for any torn pieces of paper that may be stuck.

Frequently Asked Questions (FAQs)

1. Can I print borderless photos with the Canon Pixma IX6820?

Yes, the Canon Pixma IX6820 supports borderless printing for various sizes, including 4" x 6" and 13" x 19".

2. What types of paper can I use with the printer?

You can use a variety of paper types, including photo paper, glossy paper, fine art paper, and plain paper.

3. Is the Canon Pixma IX6820 compatible with Windows and Mac?

Yes, the printer is compatible with both Windows and Mac operating systems. Ensure you download the appropriate drivers from the Canon website.

4. How can I check ink levels on my printer?

You can check ink levels through the printer's control panel or via the Canon software on your computer.

5. What should I do if my printer won't turn on?

Check the power connection and ensure the outlet is functioning. If the printer still doesn't turn on, try resetting it by unplugging it for a few minutes.

In conclusion, the Canon Pixma IX6820 Manual is a vital guide for users to unlock the full potential of their printer. By understanding its specifications, setting it up properly, utilizing its features,

performing regular maintenance, and troubleshooting common issues, users can enjoy high-quality printing for a variety of projects. Whether for professional or personal use, the Canon Pixma iX6820 is a robust and reliable printer that delivers excellent results.

Frequently Asked Questions

Where can I find the Canon Pixma iX6820 manual?

You can find the Canon Pixma iX6820 manual on the official Canon website under the support section, or by searching for 'Canon Pixma iX6820 manual PDF' in your preferred search engine.

What are the key features of the Canon Pixma iX6820?

The Canon Pixma iX6820 offers features such as wireless printing, borderless printing, a 5-color individual ink system, and compatibility with various media sizes up to 13x19 inches.

How do I set up my Canon Pixma iX6820 for wireless printing?

To set up wireless printing, first connect the printer to your Wi-Fi network using the built-in control panel, then install the necessary drivers on your computer or mobile device following the instructions in the manual.

What ink cartridges are compatible with the Canon Pixma iX6820?

The Canon Pixma iX6820 uses the Canon PGI-29 and CLI-29 ink cartridges, which are available in various colors and sizes.

How do I troubleshoot print quality issues with the Canon Pixma iX6820?

To troubleshoot print quality issues, check the ink levels, perform a print head cleaning from the maintenance menu, and ensure you're using the correct paper type specified in the manual.

Can I print from my smartphone using the Canon Pixma iX6820?

Yes, you can print from your smartphone using the Canon PRINT app, Apple AirPrint, or Google Cloud Print, as detailed in the manual.

What is the maximum paper size supported by the Canon Pixma iX6820?

The Canon Pixma iX6820 supports a maximum paper size of 13x19 inches for borderless printing.

f/2 IS

Get the ultimate guide with the Canon Pixma IX6820 manual. Discover how to set up

[Back to Home](#)