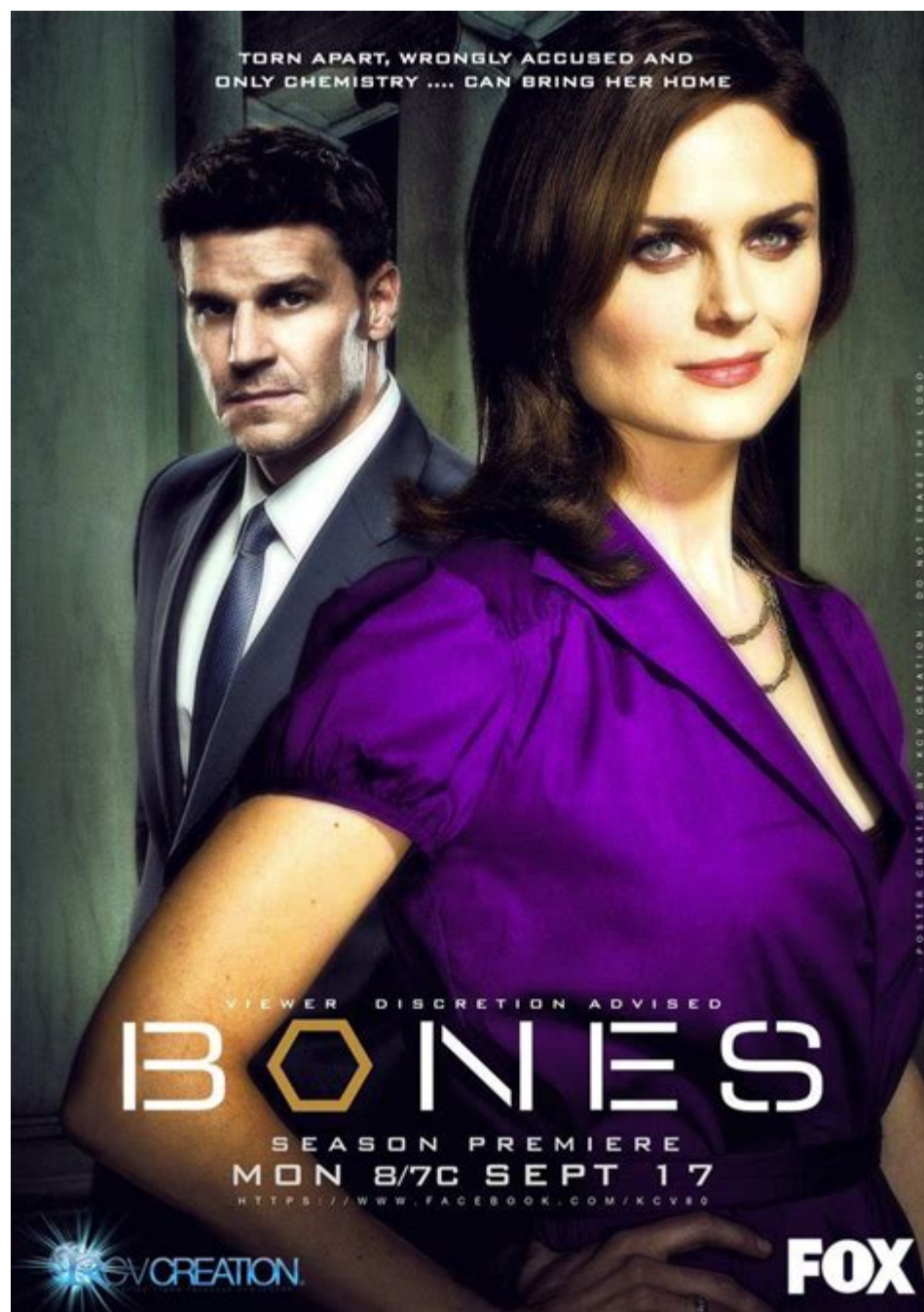


Bones Season 1 Episode Guide



Bones Season 1 Episode Guide provides a comprehensive overview of the inaugural season of this popular forensic drama series. Premiering in 2005, "Bones" quickly became a staple for those who enjoy crime-solving narratives intertwined with character-driven storylines. The show revolves around Dr. Temperance Brennan, a forensic anthropologist, and her team at the Jefferson Institute, as they work alongside FBI Special Agent Seeley Booth to solve various murder cases. This article will delve into each episode of the first season, highlighting key plot points, character developments, and thematic elements.

Overview of Season 1

The first season of "Bones" consists of 22 episodes, each contributing to the overarching narrative of the series while also presenting standalone cases. The chemistry between the main characters, the balance of humor and drama, and the intricate forensic details are what set "Bones" apart from other crime dramas.

Main Characters

- Dr. Temperance Brennan (played by Emily Deschanel): A brilliant forensic anthropologist with a logical mind and a blunt personality. She often struggles with social interactions but excels in her field.
- FBI Special Agent Seeley Booth (played by David Boreanaz): A charismatic and intuitive investigator who often serves as Brennan's foil. He is more in tune with human emotions and works to connect with witnesses and victims' families.
- Angela Montenegro (played by Michaela Conlin): A forensic artist and Brennan's best friend, who adds a creative touch to the team with her artistic skills.
- Dr. Jack Hodgins (played by T.J. Thyne): An entomologist and expert in various sciences, he often uses his knowledge of insects and spores to assist in investigations.
- Dr. Camille Saroyan (played by Tamara Taylor): The head of the forensic division who becomes more prominent in later seasons but is introduced in the first season.

Episode Breakdown

Here is a detailed breakdown of each episode in Season 1:

Episode 1: "The Pilot"

- Air Date: September 13, 2005
- Summary: The series opens with the discovery of a body in a lake. Dr. Brennan and her team are called to help identify the remains, which leads to them working with Agent Booth for the first time. Their contrasting approaches to solving the case set the stage for their relationship throughout the series.

Episode 2: "The Man in the SUV"

- Air Date: September 20, 2005
- Summary: A wealthy man's body is found in an SUV, leading to a high-profile

investigation. Brennan and Booth uncover evidence that suggests the man's death is linked to a series of financial scandals.

Episode 3: "The Boy in the Tree"

- Air Date: September 27, 2005
- Summary: When the remains of a boy are discovered in a tree, Brennan and Booth navigate the complexities of familial relationships and the impact of a tragic loss. This episode builds on the emotional aspects of their work.

Episode 4: "The Man on Death Row"

- Air Date: October 4, 2005
- Summary: A convict on death row claims he is innocent, and Brennan must use her expertise to analyze evidence that could save him. Themes of justice and morality are explored in this gripping episode.

Episode 5: "A Boy in a Bush"

- Air Date: October 11, 2005
- Summary: The team investigates a body found in a bush, leading them to confront cultural differences and societal issues. This episode showcases the team's diverse skills and backgrounds.

Episode 6: "The Man in the Morgue"

- Air Date: October 18, 2005
- Summary: The investigation leads them to a morgue where the body of a medical examiner is discovered. The episode highlights the importance of teamwork and trust among colleagues.

Episode 7: "The Ghost in the Machine"

- Air Date: October 25, 2005
- Summary: A murder investigation is complicated when the victim's body is found in a remote area. The episode expertly combines forensic science with psychological elements, pushing the characters' limits.

Episode 8: "The Woman at the Airport"

- Air Date: November 1, 2005
- Summary: The team must unravel a case that begins with the discovery of a woman's remains found near an airport. This episode delves into themes of identity and the impact of trauma.

Episode 9: "The Man in the Fallout Shelter"

- Air Date: November 8, 2005
- Summary: A snowstorm traps Brennan and her team in the lab while they investigate a case involving a skeletal remains. This episode emphasizes character development and interpersonal dynamics.

Episode 10: "The Woman in the Tunnel"

- Air Date: November 15, 2005
- Summary: As the team investigates a body found in a tunnel, they face challenges related to urban life and the struggles of the homeless community. The episode highlights Brennan's empathy and growth.

Episode 11: "The Woman in the Car"

- Air Date: November 22, 2005
- Summary: When a body is discovered in a car, the team must piece together the victim's last moments, leading to unexpected revelations. The narrative intertwines suspense with emotional depth.

Episode 12: "The Devil in the Details"

- Air Date: January 10, 2006
- Summary: The investigation of a murder at a church brings to light issues of faith and morality. The characters confront their beliefs, leading to significant personal revelations.

Episode 13: "The Woman in the Garden"

- Air Date: January 17, 2006
- Summary: A body is discovered in a garden, leading the team into the world of horticulture and its secrets. The episode explores themes of nature and human interaction.

Episode 14: "The Man on the Train"

- Air Date: January 24, 2006
- Summary: As the team investigates a murder that occurs on a train, they must navigate the challenges of time and location. The episode features thrilling chase sequences and intense drama.

Episode 15: "Two Bodies in the Lab"

- Air Date: February 7, 2006
- Summary: The discovery of two bodies leads to a complex investigation

involving multiple suspects and motives. The episode showcases the team's investigative prowess and highlights their camaraderie.

Episode 16: "The Blackout in the Blizzard"

- Air Date: February 14, 2006
- Summary: A blackout during a blizzard complicates an ongoing investigation. The episode focuses on teamwork and resilience in the face of adversity.

Episode 17: "The Skull in the Desert"

- Air Date: March 7, 2006
- Summary: The team uncovers a case in a desert setting, leading to explorations of environmental factors affecting forensic evidence. Themes of survival and endurance are prevalent.

Episode 18: "The Man Who Was in the Woods"

- Air Date: March 14, 2006
- Summary: The investigation of a body found in the woods leads to revelations about the victim's life and relationships. The episode intertwines personal and professional struggles for the characters.

Episode 19: "The Man in the Cell"

- Air Date: March 21, 2006
- Summary: A murder case linked to a prison brings the team face-to-face with the criminal justice system. The ethical dilemmas posed challenge their beliefs and convictions.

Episode 20: "The Graft in the Girl"

- Air Date: April 4, 2006
- Summary: The investigation of a body with unusual circumstances leads the team into the world of organ donation and medical ethics. This episode raises awareness about real-world issues.

Episode 21: "The Soldier on the Grave"

- Air Date: April 25, 2006
- Summary: The team investigates the remains of a soldier, leading to discussions about loyalty, sacrifice, and the impact of war. The episode is poignant and respectful of the subject matter.

Episode 22: "The Woman in the Sand"

- Air Date: May 16, 2006
- Summary: The season finale culminates in a dramatic investigation that ties together various storylines and character arcs. The episode expertly sets the stage for future seasons while providing closure to key plot points.

Conclusion

Bones Season 1 Episode Guide serves not only as a reference for fans of the series but also highlights the critical elements that made the show a success. The character dynamics, engaging plotlines, and the blend

Frequently Asked Questions

What is the premise of Season 1 of Bones?

Season 1 of Bones follows FBI Special Agent Seeley Booth and forensic anthropologist Dr. Temperance Brennan as they solve murder cases using their expertise in bones and forensic science.

How many episodes are in Season 1 of Bones?

Season 1 of Bones consists of 22 episodes.

What are some key themes explored in Season 1 of Bones?

Key themes in Season 1 include the partnership between science and law enforcement, the importance of teamwork, and the personal struggles of the characters, particularly Dr. Brennan's emotional detachment.

Which episode of Bones Season 1 introduces the character Angela Montenegro?

Angela Montenegro is introduced in Episode 2 of Season 1, titled 'The Man in the SUV.'

What is the premiere date of Season 1 of Bones?

Season 1 of Bones premiered on September 13, 2005.

Find other PDF article:

<https://soc.up.edu.ph/32-blog/Book?ID=Obn36-4389&title=ideas-to-show-love-to-husband.pdf>

Bones Season 1 Episode Guide

□□□□□□□□*Bones*)□□□□□□□□□□□□□□10□

```

11 booth bones
2.
...

```

□□□□□□□*backbone*□□□□□? - □□

```
1.backbone[0][0]...
    ...
```

Skull & Bones -

Skull & Bones X ...

□□□□□□BONES□□□□ - □□

bones 3~6 BD

□□□□□□□□BONES□□□□□ - □□

BONES 1998 年 1 月 1 日 至 1998 年 12 月 31 日 期间 所有 数据 均 已 录入 数据库 中 且 均 已 经过 严格 的 审核 和 校对 工作 确保 数据 的 完整 性和 准确性 。

[illegible]

```

#####16##### Bones#####Harold overmeyer#####
##### ...

```

□□□□□Bones□Both□□□□□□□ - □□

```
[ ] bones[ ]
```

□□□□□□□□ **Bones)** □□□□□□□□□□□□□□ **10** □

bug 1.5 1 1

make no bones about -

What the devil does a mentor do when the sinner make no bones about confessing his sin?

`upbones`

zoodB

□□□□□□□□ **Bones)** □□□□□□□□□□□□□□ **10** □

```

11 booth bones
2.
...

```

□□□□□□□backbone□□□□□? - □□

```
1.backbone[0][0]...
    ...
```

Skull & Bones -

Skull & BonesX

BONES -

bones3~6BD

BONES -

BONES1998

-

16BonesHarold overmeyer

BonesBoth -

bones

Bones)10

bug1.511

make no bones about? -

What the devil does a mentor do when the sinner make no bones about confessing his sin?

Bupbones

zoodB

Explore our comprehensive 'Bones Season 1 Episode Guide' for detailed summaries

[Back to Home](#)