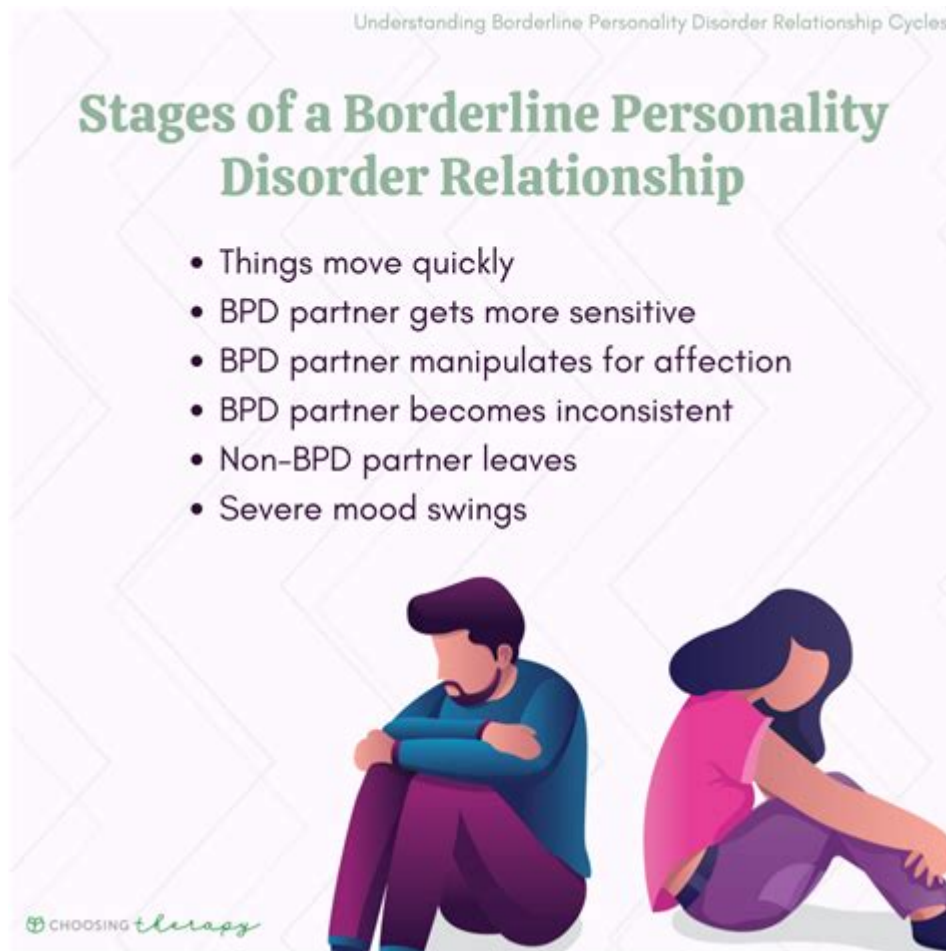


Borderline Personality Disorder Relationships Manipulation



BORDERLINE PERSONALITY DISORDER RELATIONSHIPS MANIPULATION IS A COMPLEX AND OFTEN MISUNDERSTOOD ASPECT OF INTERPERSONAL DYNAMICS INVOLVING INDIVIDUALS DIAGNOSED WITH BORDERLINE PERSONALITY DISORDER (BPD). THIS MENTAL HEALTH CONDITION IS CHARACTERIZED BY INTENSE EMOTIONAL EXPERIENCES, UNSTABLE RELATIONSHIPS, AND DIFFICULTIES WITH SELF-IMAGE. WHILE MANY PEOPLE WITH BPD DEEPLY DESIRE CONNECTION AND INTIMACY, THE WAY THEY NAVIGATE RELATIONSHIPS CAN OFTEN LEAD TO MANIPULATION, WHICH CAN BE CONFUSING AND DISTRESSING FOR BOTH PARTIES INVOLVED. UNDERSTANDING THE MECHANISMS OF MANIPULATION IN THE CONTEXT OF BPD IS CRUCIAL FOR FOSTERING HEALTHIER INTERACTIONS AND SUPPORTING THOSE AFFECTED BY THIS DISORDER.

UNDERSTANDING BORDERLINE PERSONALITY DISORDER

BORDERLINE PERSONALITY DISORDER IS MARKED BY A PERVASIVE PATTERN OF INSTABILITY IN INTERPERSONAL RELATIONSHIPS, SELF-IMAGE, AND EMOTIONS. THE DIAGNOSTIC AND STATISTICAL MANUAL OF MENTAL DISORDERS (DSM-5) OUTLINES SEVERAL KEY FEATURES OF BPD, INCLUDING:

1. **FEAR OF ABANDONMENT:** INDIVIDUALS WITH BPD OFTEN HAVE AN INTENSE FEAR OF BEING ABANDONED OR REJECTED, LEADING TO FRANTIC EFFORTS TO AVOID REAL OR IMAGINED SEPARATION.
2. **UNSTABLE RELATIONSHIPS:** RELATIONSHIPS MAY BE CHARACTERIZED BY IDEALIZATION AND DEVALUATION, SWINGING FROM EXTREME CLOSENESS TO EXTREME DISTANCE.
3. **IMPULSIVITY:** THIS MAY MANIFEST IN RECKLESS BEHAVIORS THAT CAN HARM ONESELF OR OTHERS.
4. **EMOTIONAL INSTABILITY:** MOOD SWINGS CAN OCCUR RAPIDLY AND INTENSELY, LEADING TO DIFFICULTIES IN MANAGING

EMOTIONS.

5. CHRONIC FEELINGS OF EMPTINESS: MANY INDIVIDUALS WITH BPD REPORT A PERSISTENT SENSE OF EMPTINESS.

6. DIFFICULTY WITH IDENTITY: AN UNSTABLE SELF-IMAGE CAN LEAD TO FREQUENT CHANGES IN GOALS, VALUES, AND CAREER ASPIRATIONS.

THESE SYMPTOMS CAN SIGNIFICANTLY IMPACT HOW INDIVIDUALS WITH BPD RELATE TO OTHERS, OFTEN RESULTING IN MANIPULATIVE BEHAVIORS.

MANIPULATION IN RELATIONSHIPS

MANIPULATION IN THE CONTEXT OF BPD CAN TAKE MANY FORMS, OFTEN ROOTED IN THE FEAR OF ABANDONMENT AND DIFFICULTIES WITH EMOTIONAL REGULATION. IT IS ESSENTIAL TO UNDERSTAND THAT MANIPULATION IS NOT ALWAYS A CONSCIOUS OR MALICIOUS ACT; RATHER, IT MAY STEM FROM DEEP-SEATED INSECURITIES AND A DESPERATE NEED FOR CONNECTION.

COMMON MANIPULATIVE BEHAVIORS

INDIVIDUALS WITH BPD MAY ENGAGE IN VARIOUS MANIPULATIVE BEHAVIORS, WHICH CAN INCLUDE:

- EMOTIONAL BLACKMAIL: THEY MAY THREATEN SELF-HARM OR WITHDRAWAL IF THEIR NEEDS ARE NOT MET, CREATING A PRESSURE COOKER SITUATION FOR THEIR PARTNERS.
- GUILT-INDUCING: THEY MIGHT USE GUILT AS A TOOL TO ELICIT SYMPATHY OR COMPLIANCE, MAKING THEIR PARTNER FEEL RESPONSIBLE FOR THEIR EMOTIONAL STATE.
- GASLIGHTING: THIS INVOLVES TWISTING THE TRUTH OR DENYING REALITY TO MAKE THE PARTNER DOUBT THEIR PERCEPTION OF EVENTS, LEADING TO CONFUSION AND HELPLESSNESS.
- LOVE BOMBING: IN THE EARLY STAGES OF RELATIONSHIPS, THEY MAY SHOWER THEIR PARTNER WITH AFFECTION AND ATTENTION, CREATING AN INTENSE BOND THAT CAN LATER SHIFT TO DEVALUATION.
- TRIANGULATION: THEY MAY INVOLVE A THIRD PARTY TO CREATE CONFLICT OR GAIN SYMPATHY, FURTHER COMPLICATING THE RELATIONSHIP DYNAMICS.

THE CYCLE OF MANIPULATION

THE MANIPULATION CYCLE IN RELATIONSHIPS INVOLVING SOMEONE WITH BPD CAN BE CYCLICAL AND SELF-PERPETUATING. OFTEN, THE INITIAL PHASE OF IDEALIZATION IS FOLLOWED BY DEVALUATION, WHICH CAN TRIGGER A RETURN TO MANIPULATION. THIS CYCLE CAN BE BROKEN DOWN INTO SEVERAL STAGES:

1. IDEALIZATION: THE RELATIONSHIP BEGINS WITH INTENSE PASSION AND ADMIRATION. THE INDIVIDUAL WITH BPD MAY VIEW THEIR PARTNER AS PERFECT.
2. DEVALUATION: AS THE RELATIONSHIP PROGRESSES, MINOR DISAGREEMENTS OR PERCEIVED SLIGHTS CAN LEAD TO FEELINGS OF BETRAYAL, SHIFTING THE PERCEPTION OF THE PARTNER FROM "PERFECT" TO "FLAWED."
3. MANIPULATION: DURING THIS PHASE, THE INDIVIDUAL MAY RESORT TO VARIOUS MANIPULATIVE TACTICS TO REGAIN CONTROL OR ATTENTION, OFTEN OUT OF FEAR OF ABANDONMENT.
4. DESPERATION: THE INDIVIDUAL MAY FEEL INCREASINGLY DESPERATE TO MAINTAIN THE RELATIONSHIP, LEADING TO MORE EXTREME BEHAVIORS AND EMOTIONAL OUTBURSTS.
5. RECONCILIATION: AFTER A PERIOD OF CHAOS, THERE MAY BE A RETURN TO IDEALIZATION, OFTEN MARKED BY PROMISES TO CHANGE OR IMPROVE.

IMPACT ON RELATIONSHIPS

THE MANIPULATIVE BEHAVIORS ASSOCIATED WITH BPD CAN CREATE SIGNIFICANT STRAIN ON RELATIONSHIPS. PARTNERS OF

INDIVIDUALS WITH BPD MAY EXPERIENCE:

- EMOTIONAL EXHAUSTION: CONSTANTLY NAVIGATING THE UPS AND DOWNS CAN LEAD TO FEELINGS OF BURNOUT AND FRUSTRATION.
- CONFUSION: THE RAPID SHIFTS BETWEEN IDEALIZATION AND DEVALUATION CAN LEAVE PARTNERS FEELING BEWILDERED AND QUESTIONING THEIR OWN PERCEPTIONS.
- ISOLATION: PARTNERS MAY WITHDRAW FROM SOCIAL CIRCLES OR SUPPORT SYSTEMS IN AN EFFORT TO MANAGE THE TURBULENT RELATIONSHIP, LEADING TO FEELINGS OF LONELINESS.
- RESENTMENT: OVER TIME, THE MANIPULATION CAN FOSTER FEELINGS OF RESENTMENT, POTENTIALLY LEADING TO THE BREAKDOWN OF THE RELATIONSHIP.

HEALTHY COPING STRATEGIES

FOR INDIVIDUALS IN RELATIONSHIPS WITH SOMEONE WHO HAS BPD, IT IS ESSENTIAL TO ADOPT HEALTHY COPING STRATEGIES TO MANAGE THE EMOTIONAL TURMOIL AND MAINTAIN PERSONAL WELL-BEING. HERE ARE SOME EFFECTIVE APPROACHES:

1. EDUCATE YOURSELF: UNDERSTANDING BPD CAN DEMYSTIFY SOME BEHAVIORS AND REDUCE FEELINGS OF FRUSTRATION.
2. SET BOUNDARIES: CLEARLY DEFINED BOUNDARIES CAN HELP PROTECT EMOTIONAL WELL-BEING AND PREVENT MANIPULATION.
3. PRACTICE SELF-CARE: ENGAGE IN ACTIVITIES THAT PROMOTE MENTAL HEALTH, SUCH AS EXERCISE, THERAPY, OR HOBBIES.
4. COMMUNICATE OPENLY: HONEST AND DIRECT COMMUNICATION CAN HELP ADDRESS ISSUES BEFORE THEY ESCALATE.
5. SEEK SUPPORT: CONSIDER JOINING SUPPORT GROUPS OR ENGAGING IN THERAPY TO PROCESS FEELINGS AND GAIN PERSPECTIVE.

WHEN TO SEEK PROFESSIONAL HELP

IF MANIPULATION IN THE RELATIONSHIP BECOMES OVERWHELMING OR ABUSIVE, IT MAY BE NECESSARY TO SEEK PROFESSIONAL HELP. THIS COULD INVOLVE:

- COUPLES THERAPY: ENGAGING IN THERAPY TOGETHER CAN HELP NAVIGATE THE COMPLEXITIES OF THE RELATIONSHIP AND IMPROVE COMMUNICATION.
- INDIVIDUAL THERAPY: BOTH PARTNERS MAY BENEFIT FROM INDIVIDUAL THERAPY TO ADDRESS PERSONAL STRUGGLES AND DEVELOP COPING STRATEGIES.
- CRISIS INTERVENTION: IF THREATS OF SELF-HARM OR HARM TO OTHERS ARISE, IT IS CRUCIAL TO SEEK IMMEDIATE ASSISTANCE FROM MENTAL HEALTH PROFESSIONALS.

CONCLUSION

NAVIGATING RELATIONSHIPS AFFECTED BY BORDERLINE PERSONALITY DISORDER AND ITS ASSOCIATED MANIPULATION CAN BE CHALLENGING AND EMOTIONALLY TAXING. UNDERSTANDING THE UNDERLYING MOTIVATIONS AND BEHAVIORS CAN FOSTER EMPATHY AND FACILITATE HEALTHIER COMMUNICATION. WHILE IT IS ESSENTIAL TO SUPPORT LOVED ONES WITH BPD, IT IS EQUALLY IMPORTANT TO PRIORITIZE PERSONAL WELL-BEING AND ESTABLISH BOUNDARIES. THROUGH EDUCATION, OPEN COMMUNICATION, AND APPROPRIATE SUPPORT, IT IS POSSIBLE TO CULTIVATE MORE STABLE AND FULFILLING RELATIONSHIPS. ULTIMATELY, AWARENESS AND UNDERSTANDING ARE KEY TO BREAKING THE CYCLE OF MANIPULATION AND FOSTERING HEALTHIER CONNECTIONS FOR ALL INVOLVED.

FREQUENTLY ASKED QUESTIONS

WHAT ARE COMMON MANIPULATION TACTICS USED BY INDIVIDUALS WITH BORDERLINE

PERSONALITY DISORDER IN RELATIONSHIPS?

COMMON MANIPULATION TACTICS MAY INCLUDE EMOTIONAL OUTBURSTS, GUILT-TRIPPING, PLAYING THE VICTIM, AND USING FEAR OF ABANDONMENT TO CONTROL PARTNERS.

HOW CAN SOMEONE RECOGNIZE IF THEY ARE BEING MANIPULATED IN A RELATIONSHIP WITH A PARTNER WHO HAS BORDERLINE PERSONALITY DISORDER?

SIGNS OF MANIPULATION MAY INCLUDE FEELING CONSISTENTLY GUILTY, EXPERIENCING EXTREME MOOD SWINGS FROM THE PARTNER, AND NOTICING A PATTERN OF EMOTIONAL HIGHS AND LOWS THAT LEAVE YOU FEELING CONFUSED.

WHAT STRATEGIES CAN HELP A PARTNER MAINTAIN HEALTHY BOUNDARIES IN A RELATIONSHIP WITH SOMEONE WHO HAS BORDERLINE PERSONALITY DISORDER?

SETTING CLEAR AND CONSISTENT BOUNDARIES, PRACTICING ASSERTIVE COMMUNICATION, AND SEEKING THERAPY CAN HELP PARTNERS MAINTAIN THEIR WELL-BEING AND REDUCE MANIPULATION.

IS IT POSSIBLE FOR RELATIONSHIPS WITH INDIVIDUALS WHO HAVE BORDERLINE PERSONALITY DISORDER TO BE HEALTHY?

YES, IT IS POSSIBLE FOR THESE RELATIONSHIPS TO BE HEALTHY IF BOTH PARTNERS ARE COMMITTED TO UNDERSTANDING THE DISORDER, SEEKING THERAPY, AND WORKING ON COMMUNICATION AND COPING STRATEGIES.

WHAT ROLE DOES THERAPY PLAY IN MANAGING MANIPULATION IN RELATIONSHIPS AFFECTED BY BORDERLINE PERSONALITY DISORDER?

THERAPY CAN HELP INDIVIDUALS WITH BORDERLINE PERSONALITY DISORDER DEVELOP HEALTHIER COPING MECHANISMS AND COMMUNICATION SKILLS, WHILE ALSO PROVIDING THEIR PARTNERS WITH STRATEGIES TO HANDLE MANIPULATION EFFECTIVELY.

HOW CAN PARTNERS SUPPORT SOMEONE WITH BORDERLINE PERSONALITY DISORDER WITHOUT ENABLING MANIPULATION?

PARTNERS CAN SUPPORT THEIR LOVED ONES BY ENCOURAGING PROFESSIONAL HELP, LISTENING WITHOUT JUDGMENT, AND MAINTAINING THEIR OWN BOUNDARIES TO PREVENT ENABLING HARMFUL BEHAVIORS.

WHAT ARE THE LONG-TERM EFFECTS OF MANIPULATION IN RELATIONSHIPS INVOLVING BORDERLINE PERSONALITY DISORDER?

LONG-TERM EFFECTS CAN INCLUDE EMOTIONAL EXHAUSTION, DECREASED SELF-ESTEEM, ANXIETY, AND THE POTENTIAL FOR CODEPENDENCY, AFFECTING BOTH PARTNERS' MENTAL HEALTH AND RELATIONSHIP DYNAMICS.

Find other PDF article:

<https://soc.up.edu.ph/18-piece/pdf?docid=SIm08-7318&title=domain-and-range-homework-answer-key.pdf>

Borderline Personality Disorder Relationships Manipulation

Office gratis sin licencia y sin descargar nada: en PC y Mac - C...

Nov 8, 2023 · ¿Necesitas Microsoft Office, pero no quieres pagar la licencia? Ahora es posible tener el paquete Office ...

Cómo conseguir serial o licencia de Office 2016, 2021, 365 - CCM

Aug 14, 2023 · Cuando adquieres Microsoft Office, ya sea la versión 2021, 2019, o Microsoft 365, tu cuenta está ...

Descargar Microsoft Office 2016 gratis para PC, Mac - CCM

Feb 29, 2024 · Microsoft Office 2016 es una de las últimas ediciones de la suite ofimática más completa del mercado. ...

No me aparecen aplicaciones al ingresar a Office 365

No me aparecen aplicaciones al ingresar a Office 365 No me aparecen las aplicaciones al ingresar a mi cuenta de ...

Descargar Microsoft 365 gratis para PC, Mac, Android (APK)

Mar 13, 2024 · Office ahora es Microsoft 365 y se presenta como una nueva plataforma innovadora conectada a la ...

realme 15 5G (Flowing Silver, 128 GB) - Flipkart

Buy realme 15 5G online at best price with offers in India. realme 15 5G (Flowing Silver, 128 GB) features and specifications include 8 GB RAM, 128 GB ROM, 7000 mAh battery, 50 MP back ...

realme Mobile Phones Online at Best Prices and Offers in India

Buy realme mobiles: An emerging Chinese smartphone brand, realme is out to integrate power with style by focusing on critical user needs. Launched in May 2018, the brand is already ...

Amazon.in: Realme 15

1-16 of over 10,000 results for "realme 15" Results Check each product page for other buying options.

realme 15 5G (Flowing Silver, 128 GB) (8 GB RAM) - Flipkart

Buy realme 15 5G online at best price with offers in India. realme 15 5G (Flowing Silver, 128 GB) features and specifications include 8 GB RAM, 128 GB ROM, 7000 mAh battery, 50 MP back ...

Amazon.in: 5g Mobile Phone Under 15000

Amazon.in: 5g mobile phone under 15000 1-16 of 530 results for "5g mobile phone under 15000"

Realme 5G Smartphone Online in India | Flipkart | 28-Jul-25

Realme 5g Smartphone - Buy Realme 5g Smartphone Online at India's Best Online Shopping Store. Check Realme 5g Smartphone Prices, Ratings & Reviews at Flipkart.com. Free ...

realme C15 (Power Blue, 3GB RAM, 32GB Storage) with No Cost ...

Say hello to the realme C15 smartphone! Featuring a 6000 mAh battery, this smartphone will be your companion for work and entertainment. It even supports 18 W quick charging so that you ...

Realme Mobile Phones Under 15000 - Flipkart

Buy Best Realme Mobile Phones Under Rs.15000.Choose from a wide range of Realme mobile models. Check specification, price and reviews to buy the best Realme mobile phone

Amazon.in: Realme Mobile Phones Under 15000

1-16 of over 50,000 results for "realme mobile phones under 15000" Results Check each product page for other buying options.

realme 14x 5G Smartphone 8+128GB Golden Glow, 6.67-inch ...

This item: realme 14x 5G Smartphone 8+128GB Golden Glow, 6.67-inch Screen, 120Hz Display, 6000mAh Battery, 80MP, MediaTek Dimensity 6300, ArmorShell Protection, IP69

realme 14x 5G (128 GB Storage, 8 GB RAM) Online at Best

Buy realme 14x 5G online at best price with offers in India. realme 14x 5G (Crystal Black, 128 GB) features and specifications include 8 GB RAM, 128 GB ROM, 6000 mAh battery, 50 MP back ...

Amazon.in: Realme Phone Under 25000

1-16 of over 8,000 results for "realme phone under 25000"

Explore the complexities of borderline personality disorder relationships and manipulation. Discover how to navigate these challenges effectively. Learn more!

[Back to Home](#)