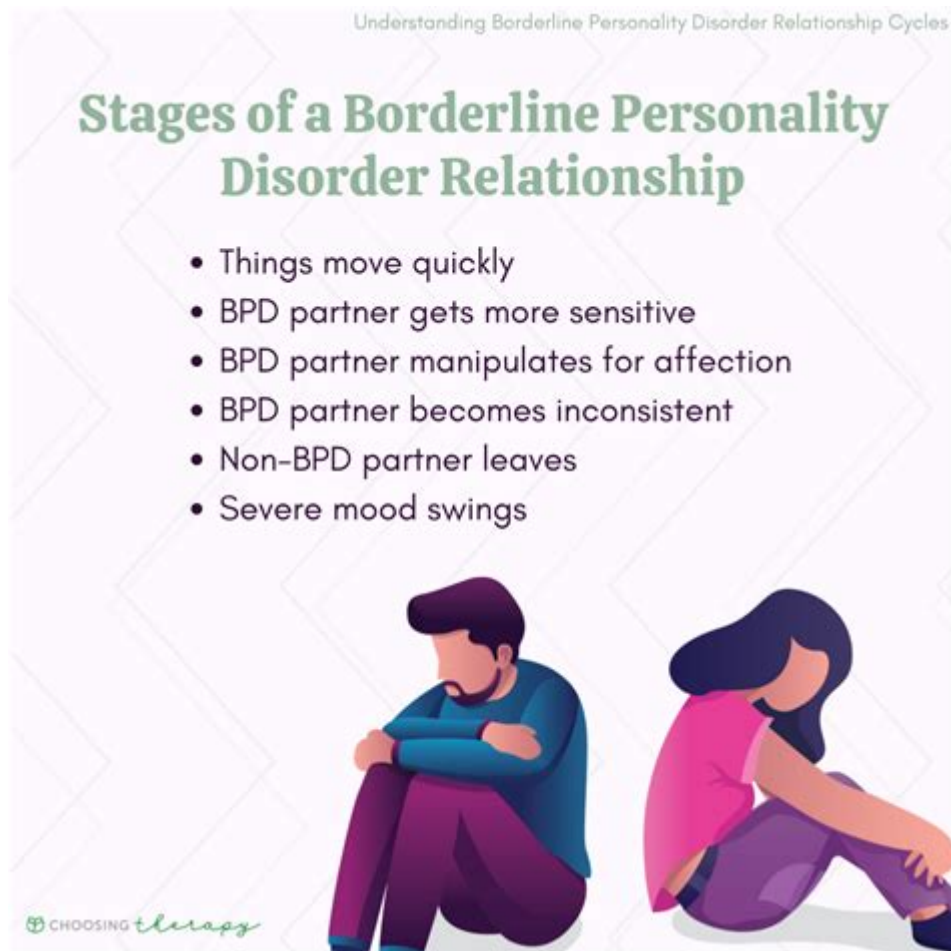


Borderline Personality Disorder And Relationships



Borderline Personality Disorder and Relationships are deeply intertwined, often leading to complex dynamics that can challenge both individuals with the disorder and their loved ones. Borderline Personality Disorder (BPD) is a mental health condition characterized by pervasive instability in moods, behavior, self-image, and functioning. These symptoms can significantly affect interpersonal relationships, leading to intense emotional experiences, fear of abandonment, and difficulties in maintaining stable connections. Understanding BPD and its implications for relationships is crucial for those affected by it and for those who care about them.

Understanding Borderline Personality Disorder

Borderline Personality Disorder is often misunderstood, leading to stigmatization and misconceptions. To better understand how BPD impacts relationships, it is essential to grasp its core characteristics and symptoms.

Core Characteristics of BPD

1. **Emotional Instability:** Individuals with BPD frequently experience intense emotional reactions that can shift rapidly. This instability can lead to unpredictable behavior and mood swings that affect relationships.
2. **Fear of Abandonment:** A profound fear of being abandoned or rejected is a hallmark of BPD. This fear can lead to anxiety and may cause individuals to cling to relationships or push others away out of fear.
3. **Impulsive Behavior:** Impulsivity in various areas, such as spending, substance use, or reckless driving, can strain relationships. These behaviors often occur without consideration for the consequences.
4. **Self-Image Issues:** Individuals with BPD may struggle with a fluctuating sense of self. Their self-esteem can be highly dependent on their relationships, leading to feelings of emptiness when they are alone or when relationships are strained.
5. **Interpersonal Difficulties:** Relationships tend to be intense and chaotic, often oscillating between idealization and devaluation. This "black-and-white" thinking can create significant turmoil in personal connections.

Impact of BPD on Relationships

The symptoms of BPD can lead to notable challenges in various types of relationships, including romantic partnerships, friendships, and family ties.

Romantic Relationships

Romantic relationships are often the most affected by BPD, as emotional intimacy can trigger fear of abandonment and intense emotional responses. Some common patterns include:

- **Idealization and Devaluation:** A partner with BPD may initially idolize their significant other, creating an intense bond. However, minor conflicts can lead to sudden devaluation, where the partner feels unworthy or unloved.
- **Clinginess and Withdrawal:** The fear of abandonment may cause individuals with BPD to become overly clingy, seeking constant reassurance. Conversely, they may withdraw when feeling overwhelmed, leading to confusion for their partner.
- **Conflict and Miscommunication:** Intense emotions can lead to frequent arguments and misunderstandings. These conflicts can be exacerbated by impulsive reactions and difficulty in regulating emotions.

Friendships

Friendships may also be affected by BPD. The following issues can arise:

- Dependence vs. Independence: Friends may feel overwhelmed by the demands of a person with BPD, who may require significant emotional support. This can strain the friendship, leading to feelings of resentment.
- Social Isolation: Individuals with BPD may struggle to maintain friendships due to their intense emotional responses and fear of rejection, leading to feelings of isolation.
- Misinterpretation of Actions: Friends might misinterpret the behavior of someone with BPD, leading to misunderstandings and conflict. This can further perpetuate feelings of loneliness and abandonment.

Family Dynamics

Family relationships can also be profoundly affected by BPD. The dynamics may include:

- Caretaking Roles: Family members may take on caretaking roles, which can lead to resentment and burnout. This dynamic can also prevent the individual with BPD from developing independence.
- Communication Breakdown: Miscommunication and emotional volatility can lead to a breakdown in family communication, resulting in conflict and distancing.
- Generational Patterns: BPD can exist in families, leading to patterns of behavior that can perpetuate the cycle of emotional instability and conflict across generations.

Navigating Relationships with BPD

While BPD presents significant challenges in relationships, there are strategies that individuals and their loved ones can employ to foster healthier dynamics.

For Individuals with BPD

1. Therapy: Engaging in therapy, specifically Dialectical Behavior Therapy (DBT), can help individuals learn skills to manage emotions, improve relationships, and develop healthier coping mechanisms.
2. Self-Awareness: Developing self-awareness about one's triggers and emotional responses can aid in recognizing patterns that lead to conflict. Journaling and reflecting on feelings can be beneficial.

3. **Communication Skills:** Learning effective communication techniques, such as using "I" statements and practicing active listening, can enhance interactions with others.
4. **Establishing Boundaries:** It's essential to understand and respect personal boundaries in relationships. Recognizing when to step back can prevent overwhelming oneself or others.

For Partners and Loved Ones

1. **Educate Yourself:** Understanding BPD and its symptoms can foster empathy and patience. Read books, attend workshops, or seek resources to better comprehend the disorder.
2. **Practice Patience:** Building a relationship with someone who has BPD takes time. Patience and understanding are vital in navigating the ups and downs of the relationship.
3. **Encourage Professional Help:** Support your loved one in seeking therapy and engaging in treatment. Encourage them to practice the skills learned in therapy.
4. **Set Boundaries:** Establish clear boundaries for yourself to avoid burnout. It's essential to communicate these boundaries gently yet firmly.
5. **Seek Support:** Joining support groups for loved ones of individuals with BPD can provide a safe space to share experiences and gain insight from others facing similar challenges.

Conclusion

Borderline Personality Disorder significantly impacts relationships, often leading to intense emotional experiences and challenges in maintaining stable connections. However, with understanding, effective communication, and professional support, both individuals with BPD and their loved ones can navigate these complexities. Building healthy relationships is not only possible but can also be profoundly rewarding, fostering emotional growth and connection for all involved. Understanding BPD is the first step towards creating a supportive environment where love and compassion can thrive amidst the challenges.

Frequently Asked Questions

How does borderline personality disorder (BPD) affect romantic relationships?

BPD can lead to intense emotional fluctuations, fear of abandonment, and unstable relationships. Partners may experience extreme highs and lows, which can create challenges in communication and emotional intimacy.

What are some effective communication strategies for partners of someone with BPD?

Effective strategies include using 'I' statements to express feelings, maintaining calm during conflicts, validating their emotions, and setting clear boundaries to foster a supportive environment.

Can someone with BPD have healthy relationships?

Yes, with appropriate treatment such as therapy and support, individuals with BPD can develop healthier relationship patterns. Commitment to personal growth and understanding from partners are key factors.

What role does therapy play in managing BPD in relationships?

Therapy, particularly dialectical behavior therapy (DBT), helps individuals with BPD learn emotional regulation, interpersonal effectiveness, and distress tolerance, which can significantly improve their relationships.

How can partners cope with the challenges of being in a relationship with someone who has BPD?

Partners can benefit from self-care, seeking support groups, learning about BPD, and possibly engaging in couple's therapy to improve understanding and strengthen the relationship.

Find other PDF article:

<https://soc.up.edu.ph/57-chart/files?dataid=OGI44-3257&title=teaching-guide-in-first-year-ubd.pdf>

Borderline Personality Disorder And Relationships

Sign in | Microsoft Power BI

Sign in to Microsoft Power BI for intuitive data visualization, detailed analytics, and interactive dashboards. Unlock your data's full potential.

Power BI

Inicie sesión en Microsoft Power BI para obtener una visualización de datos intuitiva, análisis detallados y paneles interactivos. Desbloquee todo el potencial de sus datos.

Power BI Desktop | Microsoft Power Platform

Explora Power BI Desktop, una aplicación gratuita de Microsoft para convertir los datos en conclusiones y pasar a la acción mediante la visualización y el análisis de datos.

Power BI: visualización de datos | Microsoft Power Platform

Power BI es una plataforma unificada y escalable para la inteligencia empresarial (BI) y de autoservicio. Conéctese a los datos y visualícelos, e infunda los objetos visuales sin ...

Descargar Power BI | Microsoft Power Platform

Descarga las versiones más recientes de Power BI de Microsoft Power Platform. Crea informes, paneles y mucho más con Power BI.

¿Qué es Power BI? Información general sobre componentes y ...

Jun 30, 2025 · Power BI es un componente principal de Microsoft Fabric, lo que proporciona funcionalidades de análisis y visualización. En Fabric, Power BI comparte características como ...

Introducción | Microsoft Power BI

Empezar a trabajar con Microsoft Power BI es fácil. Pruebe Power BI de forma gratuita para obtener información sobre cómo crear y compartir informes de Power BI y encontrar ...

Introducción a Power BI Desktop - Power BI | Microsoft Learn

Oct 24, 2023 · Bienvenido a la guía de introducción de Power BI Desktop. En este paseo se muestra cómo funciona Power BI Desktop, lo que puede hacer y cómo crear modelos de datos ...

Obtener Power BI Desktop - Power BI | Microsoft Learn

Apr 11, 2025 · Obtenga información sobre las distintas formas de descargar Power BI Desktop y las opciones disponibles para instalarlo.

Download Power BI | Microsoft Power Platform

Download the latest versions of Power BI from Microsoft Power Platform. Create insightful reports, dashboards, and more with Power BI.

Kosovo - Wikipedia

Kosovo, [a] officially the Republic of Kosovo, [b] is a landlocked country in Southeast Europe with partial diplomatic recognition. It is bordered by Albania ...

Kosovo | History, Map, Flag, Population, Languages, & Capit...

Jul 17, 2025 · Who are the main ethnic groups living in Kosovo? What is the significance of the city of Pristina in Kosovo? How does Kosovo's ...

Kosovo - Simple English Wikipedia, the free encyclopedia

Until 2008, Kosovo was a part of Serbia. On 17 February 2008, Kosovo declared independence and said it was now a separate country. Since then, 104 UN ...

Kosovo | Culture, Facts & Travel | - CountryReports

Kosovo has been an independent nation since 2008. While Kosovo's government and institutions have sole responsibility for administration of the state, the ...

Kosovo Quick Facts - Be In Kosovo

Discover essential Kosovo quick facts including population, demographics, economy, languages, and more. Get a comprehensive overview of Kosovo's ...

Discover how borderline personality disorder and relationships intertwine

[Back to Home](#)