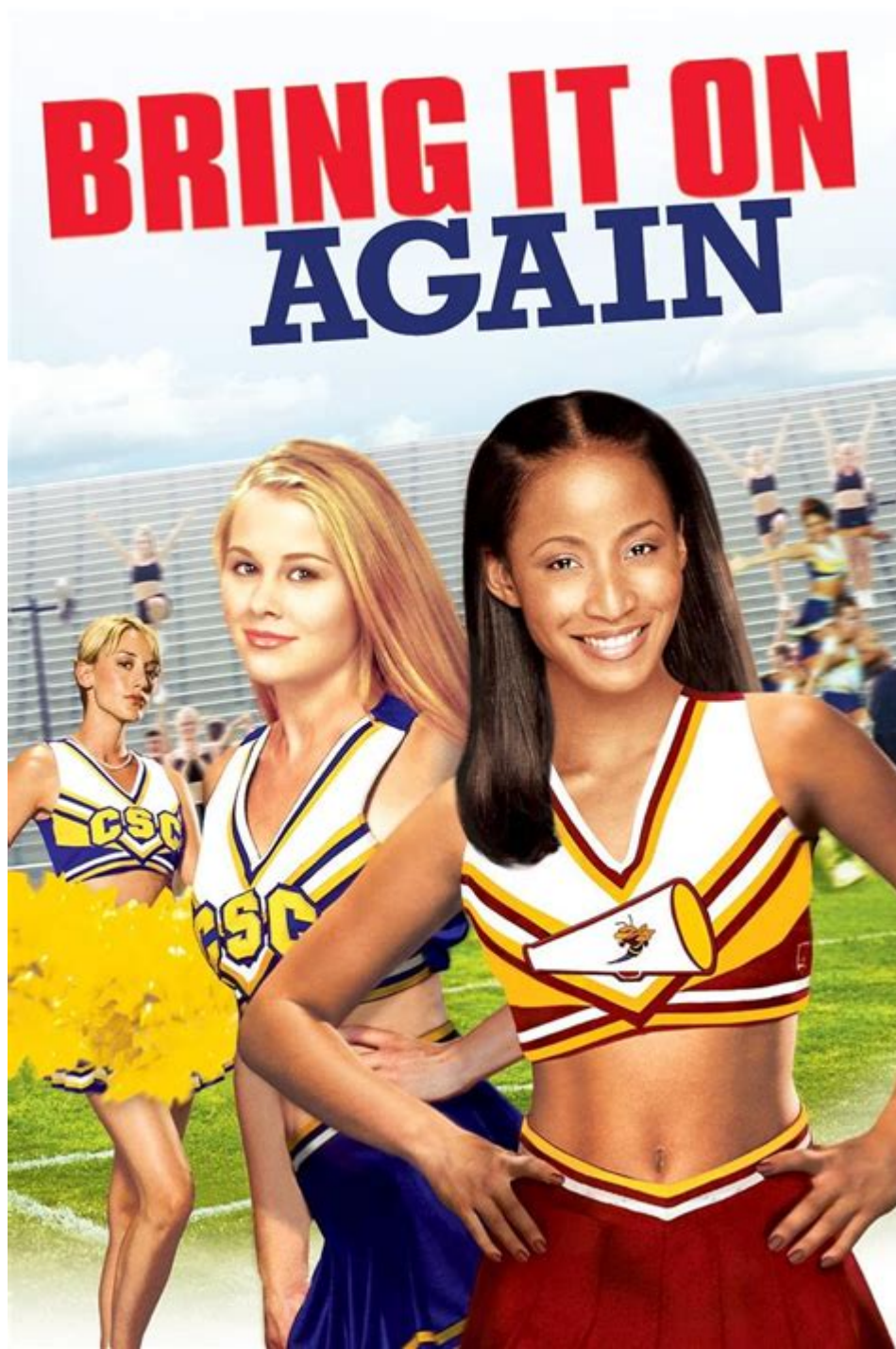


Bring It On Again Movie



Bring It On Again is a spirited 2004 sequel to the 2000 cult classic "Bring It On," a film that has become a touchstone for cheerleading culture and teenage camaraderie. Directed by Damon Santostefano and featuring a new ensemble cast, this film takes viewers back to the competitive world of cheerleading, highlighting themes of friendship, rivalry, and the pursuit of excellence. Although it did not achieve the same level of acclaim as its predecessor, "Bring It On Again" offers a fresh perspective on the cheerleading experience, filled with humor, drama, and the unmistakable energy of spirited competition.

Plot Summary

The story follows a college freshman named Whittier (played by Anne Judson-Yager), who is eager to join the cheerleading squad at the fictional Southern California University. Whittier is determined to overcome her past of not making the cheerleading team in high school and is excited about the potential to finally become part of a group that embodies teamwork and athleticism.

Upon arriving at college, Whittier quickly discovers that the cheerleading team is not just about fun and games; it's a highly competitive environment where only the best will make the cut. Here's how the plot unfolds:

1. **The Cheerleading Auditions:** Whittier's journey begins with the auditions for the cheerleading squad. She faces stiff competition from other talented candidates, including the confident and skilled cheerleader, a girl named Brooke.
2. **The Rival Team:** Whittier learns about the infamous rival cheerleading team, the "Trojans," whose members are known for their ruthless tactics and exceptional skills. This rivalry sets the stage for much of the film's tension.
3. **Building a Team:** After not initially making the cut, Whittier rallies her friends and other misfit cheerleaders to form an alternative squad. They aim to compete against the Trojans while also proving their worth to the school and themselves.
4. **Training Montage:** The film features a classic training montage where the newly formed cheer squad practices tirelessly, overcoming physical challenges and personal conflicts.
5. **Climactic Competition:** As the story progresses, the squad must face their fears and insecurities in a final competition that will determine if they can truly compete at the collegiate level.

Main Characters

The film introduces several key characters that embody the spirit of cheerleading and the challenges faced during college life.

Whittier (Anne Judson-Yager)

Whittier is the film's protagonist. Her journey from an insecure freshman to a confident leader symbolizes the challenges many face in their transition to college.

Brooke (Kirsten Storms)

Brooke is the reigning cheer captain of the Trojans and serves as Whittier's main rival. Her character represents the competitive nature of cheerleading and the pressure to maintain perfection.

Claudia (Gabrielle Union)

Claudia is a supportive friend who aids Whittier in her quest to build her squad. Her character introduces themes of loyalty and camaraderie.

Other Squad Members

Several other characters round out the cheer squad, each bringing their unique backgrounds and skills, including:

- Holly: A quirky and funny cheerleader who provides comic relief.
- Samantha: A skilled dancer who helps the team refine their routines.
- Jake: The love interest who supports Whittier's aspirations.

Themes and Messages

"Bring It On Again" explores various themes that resonate with young audiences, making it more than just a film about cheerleading.

Friendship and Teamwork

The film emphasizes the importance of friendship and working together to achieve common goals. Whittier learns that success is not just about individual talent, but also about supporting one another in the face of adversity.

Overcoming Adversity

Whittier's journey is filled with obstacles, from not making the squad to facing the fierce competition from the Trojans. Her resilience and determination embody the spirit of overcoming challenges, a message that is particularly relevant to college students.

Identity and Self-Discovery

As Whittier navigates her new environment, she embarks on a journey of self-discovery. The film encourages viewers to embrace their individuality and to find their place within a community.

Production and Reception

"Bring It On Again" was produced by Universal Pictures and directed by Damon Santostefano, who aimed to capture the same high-energy atmosphere that made the original film a favorite among fans. The production features vibrant choreography, catchy music, and a lively visual style that enhances the cheerleading performances.

Despite its entertaining elements, "Bring It On Again" received mixed reviews from critics. Many felt

that it did not live up to the charm and originality of the first film. However, it developed a loyal fan base among those who appreciate the genre. The film highlights the growing popularity of cheerleading as a sport and the challenges associated with it, showcasing the athleticism and dedication required to excel.

Cultural Impact

Although "Bring It On Again" may not have achieved the same iconic status as its predecessor, it contributed to the ongoing discourse surrounding cheerleading culture in popular media. The film's portrayal of cheerleaders as multifaceted individuals, rather than mere stereotypes, helped to humanize the sport.

The film also sparked discussions about the importance of representation within the cheerleading community. By showcasing diverse characters and their personal journeys, it emphasized that cheerleading can be an inclusive space for all.

Conclusion

In summary, "Bring It On Again" is a lively and entertaining film that resonates with themes of friendship, rivalry, and self-discovery. While it may not have the same acclaim as the original, it successfully captures the spirit of cheerleading and the challenges faced by young adults in the pursuit of their dreams. For fans of the genre, this sequel offers a worthwhile exploration of the dynamics of collegiate cheerleading, leaving audiences with an uplifting message about perseverance and teamwork. Whether viewed as a standalone movie or as part of the "Bring It On" franchise, it remains a delightful addition to the legacy of cheerleading films.

Frequently Asked Questions

What is the main plot of 'Bring It On Again'?

'Bring It On Again' follows a group of college students who form a new cheerleading squad, facing challenges and rivalries as they strive to compete in a national championship.

Who are the main characters in 'Bring It On Again'?

The film features key characters such as Whittier, played by Eileen Davidson, and her friends who navigate the ups and downs of cheerleading and personal relationships.

Is 'Bring It On Again' a direct sequel to the original 'Bring It On'?

Yes, 'Bring It On Again' is a direct sequel to the original 'Bring It On,' continuing the cheerleading theme but with a new cast and setting.

2. bring sth for sb 带某物给某人 bring sth to sb 带某物到某人 bring sth for sb 带某物给某人 bring sb sth 带某人某物 'bring sth to sb' 带某物到某人

