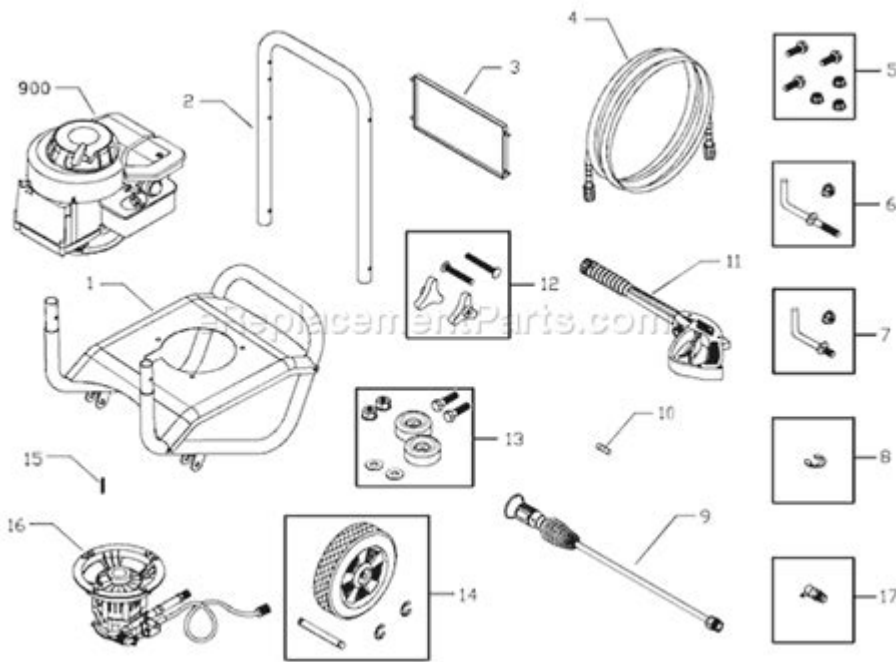


Briggs And Stratton 303 777 Manual



Briggs and Stratton 303 777 manual is an essential resource for anyone who owns or operates equipment powered by Briggs and Stratton engines. Whether you are maintaining a lawn mower, pressure washer, or other outdoor power equipment, having the correct manual on hand can make a world of difference. In this article, we will explore the importance of the Briggs and Stratton 303 777 manual, the types of information it contains, and tips for effectively using it to maintain your equipment.

Overview of Briggs and Stratton 303 777

Briggs and Stratton is a well-known name in the engine manufacturing industry, renowned for producing reliable and durable engines for various applications. The 303 777 model is particularly popular among consumers due to its efficiency and ease of use. This engine is commonly found in lawn mowers, generators, and other outdoor equipment, making the need for proper maintenance a priority.

Why You Need the Briggs and Stratton 303 777 Manual

Having the Briggs and Stratton 303 777 manual is crucial for several reasons:

1. **Maintenance Guidelines:** The manual provides detailed instructions on how to perform regular maintenance tasks such as oil changes, air filter replacements, and spark plug checks.
2. **Troubleshooting:** If you encounter issues with your engine, the manual contains troubleshooting

tips that can help you identify and fix common problems.

3. Specifications: The manual includes important specifications, such as the engine's horsepower, torque, and fuel requirements, which are essential for operating the equipment safely and efficiently.

4. Safety Information: Safety should always be a priority when working with engines. The manual outlines safety precautions to take during operation and maintenance.

5. Warranty and Service Information: The manual often includes warranty details and information on how to contact customer service or authorized repair centers.

Key Components of the Briggs and Stratton 303 777 Manual

The Briggs and Stratton 303 777 manual is organized into several key sections that provide comprehensive information about the engine. Here are some of the essential components you can expect to find:

1. Engine Specifications

This section provides detailed technical specifications of the Briggs and Stratton 303 777 engine, including:

- Engine type (e.g., vertical or horizontal shaft)
- Displacement (cubic centimeters)
- Power output (horsepower)
- Fuel type (gasoline, ethanol blends)
- Oil capacity and type (recommended oil grade)

2. Maintenance Schedule

The manual often includes a maintenance schedule that outlines when specific tasks should be performed. Regular maintenance can help extend the life of your engine. Some common tasks include:

- Checking and changing the oil every 50 hours of operation
- Replacing the air filter every 100 hours
- Inspecting and replacing the spark plug annually
- Cleaning the carburetor as needed

3. Operating Instructions

This section covers how to operate the engine safely and efficiently. Key topics typically include:

- Starting and stopping the engine
- Adjusting throttle settings
- Operating in different conditions (wet, dry, hilly terrain)
- Proper use of attachments (if applicable)

4. Troubleshooting Guide

The troubleshooting section is invaluable for diagnosing and resolving issues. It typically includes:

- Common problems (e.g., engine won't start, rough running)
- Possible causes for each issue
- Suggested solutions or steps to take

5. Safety Precautions

Safety is paramount when working with engines. This section highlights important safety measures, including:

- Personal protective equipment (PPE) to wear
- Safe handling of fuel and oil
- Proper storage of the equipment
- Emergency procedures in case of accidents

How to Effectively Use the Briggs and Stratton 303 777 Manual

To maximize the benefits of the Briggs and Stratton 303 777 manual, consider the following tips:

1. Familiarize Yourself with the Manual

Before you start working with your engine, take some time to read through the manual. Familiarize yourself with its layout and key sections. This will save you time when you need to reference it later.

2. Keep It Accessible

Store the manual in a place where you can easily access it whenever you need it. Consider keeping a

digital copy on your devices for even quicker access.

3. Follow the Maintenance Schedule

Adhering to the maintenance schedule outlined in the manual is critical. Set reminders on your calendar for regular maintenance tasks to ensure they are not overlooked.

4. Take Notes

As you perform maintenance tasks or troubleshooting, take notes in the manual or on a separate notepad. Documenting what you've done can help you keep track of maintenance history and identify recurring issues more easily.

5. Seek Help When Needed

If you encounter a problem that you cannot resolve using the manual, don't hesitate to seek professional help. Contact an authorized service center or consult with a knowledgeable friend or technician.

Conclusion

In conclusion, the **Briggs and Stratton 303 777 manual** is an invaluable resource for anyone using equipment powered by this reliable engine. By understanding its contents and following the guidelines provided, you can ensure optimal performance and longevity of your engine. Remember to prioritize safety, adhere to maintenance schedules, and seek assistance whenever necessary. Investing time in learning about your engine through its manual will ultimately lead to a more satisfying and trouble-free experience.

Frequently Asked Questions

What is the purpose of the Briggs and Stratton 303 777 manual?

The Briggs and Stratton 303 777 manual provides detailed information on the operation, maintenance, and troubleshooting of engines manufactured under this model number.

Where can I find a digital copy of the Briggs and Stratton 303 777 manual?

A digital copy of the Briggs and Stratton 303 777 manual can typically be found on the official Briggs

and Stratton website or through authorized service centers.

What are the key maintenance tips mentioned in the Briggs and Stratton 303 777 manual?

Key maintenance tips include regular oil changes, air filter cleaning or replacement, spark plug inspection, and checking the fuel system for leaks.

Does the Briggs and Stratton 303 777 manual include troubleshooting guides?

Yes, the manual includes troubleshooting guides that help diagnose common issues, such as engine starting problems or unusual noises.

What type of oil is recommended in the Briggs and Stratton 303 777 manual?

The manual typically recommends using SAE 30 oil for temperatures above 32°F (0°C) and 5W-30 for temperatures below that.

Is there safety information included in the Briggs and Stratton 303 777 manual?

Yes, the manual includes important safety information to ensure proper operation and to prevent accidents during use and maintenance.

How often should I refer to the Briggs and Stratton 303 777 manual for maintenance?

It is advisable to refer to the manual at least once every season or after every 50 hours of operation to ensure proper maintenance.

Can I use the Briggs and Stratton 303 777 manual for similar models?

While the manual is specific to the 303 777 model, it may contain relevant information for similar models, but it's best to consult the manual for the specific model you own.

What should I do if I lose my Briggs and Stratton 303 777 manual?

If you lose your manual, you can often download a replacement from the Briggs and Stratton website or contact customer service for assistance.

Find other PDF article:

<https://soc.up.edu.ph/55-pitch/Book?ID=BYV65-6896&title=standardizing-a-sodium-hydroxide-solution.pdf>

[Briggs And Stratton 303 777 Manual](#)

French Product Registration | Briggs & Stratton

Register your Briggs & Stratton product to get faster and more efficient customer service for repair and parts.

[Google Sitemap - briggsandstratton.ca](#)

Find the right spark plug and gap for engine | Briggs & Stratton Troubleshooting small engine problems | Briggs & Stratton How to Clean a Carburetor? | Briggs & Stratton How to test and ...

[www.briggsandstratton.ca](#)

Briggs Engine Series Elite Running Watts* 16 Volts 849 Running Amps 246 Surge Amps 564 Engine Displacement (cc) 56 OHV Engine true Fuel Tank Capacity (gal) 656 Oil Capacity (oz) ...

Small Engines and Lawn Mower Parts | Briggs & Stratton

Learn more about small engines and shop for Briggs engine parts, generators & outdoor power products.

Accessibility Statement

Briggs and Stratton has invested a significant amount of resources to help ensure that its website is made easier to use and more accessible for people with disabilities, with the strong belief ...

FAQ & Safety Tips | Briggs & Stratton

Lawn mower or snow blower won't start? Use this Briggs & Stratton small engine repair guide for troubleshooting common problems & issues with small engines. [Read More](#)

[Snow Blowers | Briggs & Stratton](#)

Get outside and power through the cold quickly and effortlessly with a Briggs & Stratton® Snow Blower. With many models and features to choose from, you'll be equipped to take on Mother ...

Search - [briggsandstratton.ca](#)

Narrow your results to the desired language. All Languages All LanguagesAlbanianArabicAzerbaijaniBulgarianBurmeseChineseChinese ...

Please select your language - [briggsandstratton.ca](#)

Thank you for registering your Briggs & Stratton product (s). Click the buttons below to download or email a copy of your registration form.

Sélectionnez votre langue - [briggsandstratton.ca](#)

Renseignements pour les consommateurs * Indicates a required field Civilite Please Select Dr. M. Mlle. Mme. Rev. Prénom Nom de famille Rue Pays Province Please Select Alsace Aquitaine ...

French Product Registration | Briggs & Stratton

Register your Briggs & Stratton product to get faster and more efficient customer service for repair and parts.

Google Sitemap - [briggsandstratton.ca](#)

Find the right spark plug and gap for engine | Briggs & Stratton Troubleshooting small engine ...

www.briggsandstratton.ca

Briggs Engine Series Elite Running Watts* 16 Volts 849 Running Amps 246 Surge Amps 564 Engine Displacement (cc) 56 ...

[Small Engines and Lawn Mower Parts | Briggs & Stratton](#)

Learn more about small engines and shop for Briggs engine parts, generators & outdoor power products.

Accessibility Statement

Briggs and Stratton has invested a significant amount of resources to help ensure that its website is made easier ...

Find the complete Briggs and Stratton 303 777 manual here. Get essential tips and troubleshooting advice to keep your engine running smoothly. Learn more!

[Back to Home](#)