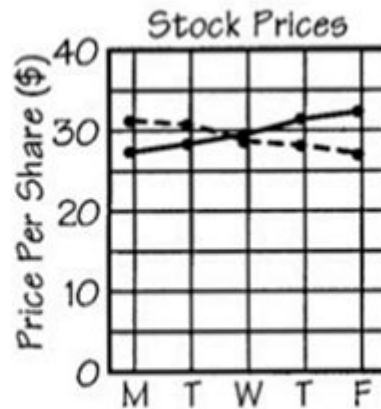
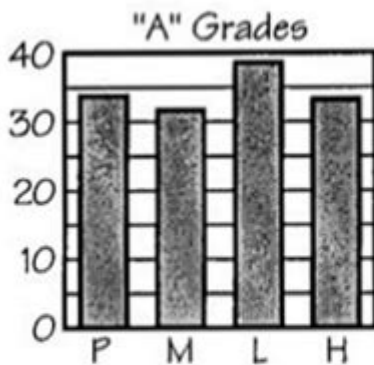


Bridge To Algebra Answer Key

- 1-2.** As drawn, the graphs exaggerate the differences in the data. Each graph should start at 0 on the vertical axis:



- 3.** As drawn, both the height and width of the skateboard symbol increase, which visually exaggerates the increase in sales. Bars of uniform width should be used instead.

Bridge to algebra answer key is an essential resource for students and educators alike, serving as a guide to understanding algebraic concepts and ensuring accurate problem-solving. Algebra is a foundational component of mathematics that students encounter early in their academic journey, and having access to a reliable answer key can significantly enhance the learning experience. This article will explore the importance of the Bridge to Algebra program, the types of resources available, and how to effectively use the answer key for academic success.

Understanding the Bridge to Algebra Program

Bridge to Algebra is a curriculum designed to help students transition from basic mathematics to more advanced algebraic concepts. It typically targets middle school students who are preparing for high school math courses. The program emphasizes critical thinking, problem-solving, and the practical application of algebra in real-world scenarios.

Key Components of the Program

The Bridge to Algebra program encompasses several key components:

1. Structured Lessons: Each lesson builds on previous knowledge, gradually introducing more complex

concepts.

2. Practice Problems: The program includes numerous practice problems that allow students to apply what they have learned.

3. Visual Aids: Graphs, charts, and other visual tools help students visualize algebraic concepts.

4. Assessment Tools: Quizzes and tests are integrated to evaluate student understanding and retention.

The Importance of the Answer Key

An answer key is an invaluable tool in any educational program, and the Bridge to Algebra answer key is no exception. Here are several reasons why it is important for students and educators:

1. Immediate Feedback

Having access to an answer key allows students to check their work immediately after completing practice problems. This instant feedback helps them identify mistakes and understand where they went wrong, promoting a deeper understanding of the material.

2. Self-Assessment

Students can use the answer key to assess their understanding of the content. By comparing their answers with the key, they can gauge their proficiency and identify areas that require additional focus.

3. Study Aid

The answer key can serve as a study aid for preparing for tests and quizzes. Students can practice problems and then refer to the key to ensure they are studying effectively.

4. Teacher Resource

Educators can use the answer key to quickly evaluate student performance on assignments and assessments. This saves time and allows teachers to focus on providing targeted support where it is needed most.

How to Effectively Use the Bridge to Algebra Answer Key

To maximize the benefits of the Bridge to Algebra answer key, students and educators should consider the following strategies:

1. Cross-Check Work

After completing practice problems, students should use the answer key to cross-check their work. If they find discrepancies, they should take the time to revisit the problem and understand their mistakes. This reflective practice enhances learning.

2. Group Study Sessions

Students can form study groups to discuss problems and solutions. Using the answer key during these sessions can facilitate discussions about different approaches to solving equations and concepts.

3. Focus on Errors

When reviewing answers, students should pay particular attention to the problems they got wrong. They can work through these problems again, consulting their textbooks or online resources for additional explanations.

4. Incorporate Feedback

Teachers can provide feedback based on the common errors noted in the answer key. This feedback can guide future lessons and help address widespread misunderstandings among students.

Common Topics Covered in Bridge to Algebra

Bridge to Algebra covers a variety of topics that are fundamental to a solid understanding of algebra. Here are some of the common subjects included in the curriculum:

- Understanding variables and expressions
- Solving linear equations and inequalities
- Graphing linear functions
- Operations with polynomials
- Factoring techniques

- Working with rational expressions
- Solving systems of equations
- Understanding functions and relations
- Introduction to quadratic equations

Where to Find the Bridge to Algebra Answer Key

Finding a reliable source for the Bridge to Algebra answer key is crucial. Here are some common places where students and educators can access it:

1. Textbook Resources

Many Bridge to Algebra textbooks come with a companion answer key that can be found in the back of the book or as a separate resource. Always check your textbook for these materials.

2. Online Educational Platforms

Several educational websites provide downloadable answer keys or online access to them. Websites like Khan Academy, IXL, or specific educational forums may have user-generated content related to the Bridge to Algebra program.

3. School Resources

Teachers often have access to answer keys and may provide them to students during lessons or study sessions. Students should not hesitate to ask their teachers for additional resources.

4. Study Guides and Workbooks

Supplementary study guides and workbooks that accompany the Bridge to Algebra program may also include answer keys, providing additional practice and solutions.

Conclusion

In conclusion, the **Bridge to algebra answer key** is a vital tool for students and educators

navigating the complexities of algebra. It provides immediate feedback, aids in self-assessment, serves as a study resource, and assists teachers in evaluating student progress. By utilizing the answer key effectively, students can enhance their understanding of algebraic concepts, ultimately preparing them for more advanced studies in mathematics. With a solid foundation in algebra, students will be equipped to tackle future academic challenges with confidence.

Frequently Asked Questions

What is 'Bridge to Algebra'?

'Bridge to Algebra' is an educational program designed to help students transition from basic arithmetic to algebraic concepts.

Where can I find the answer key for 'Bridge to Algebra'?

The answer key for 'Bridge to Algebra' can usually be found in the teacher's edition of the textbook or through educational resources provided by the publisher.

Are there any online resources for 'Bridge to Algebra' answer keys?

Yes, various educational websites and forums may provide answer keys or solutions for 'Bridge to Algebra' exercises, but it's important to ensure they are reliable.

Is it ethical to use an answer key for 'Bridge to Algebra'?

Using an answer key can be ethical if it is used as a study aid to check understanding, but relying solely on it for homework can undermine learning.

What topics are covered in 'Bridge to Algebra'?

'Bridge to Algebra' covers topics such as basic operations, variables, equations, functions, and graphing, preparing students for high school algebra.

How can students benefit from using the 'Bridge to Algebra' answer key?

Students can use the answer key to verify their work, identify mistakes, and understand the steps needed to solve algebra problems correctly.

Are answer keys available for all editions of 'Bridge to Algebra'?

Answer keys may vary by edition, so it's important to ensure that the key corresponds to the specific edition of 'Bridge to Algebra' being used.

Can parents access the 'Bridge to Algebra' answer key?

Yes, parents can access the answer key if it is provided by the school or publisher, but they should discuss its use with their child to encourage learning.

What is the best way to use an answer key for studying 'Bridge to Algebra'?

The best way to use an answer key is to attempt the problems independently first, then check answers to reinforce understanding and clarify any misconceptions.

Find other PDF article:

<https://soc.up.edu.ph/42-scope/pdf?ID=Rog95-5594&title=multiple-choice-response-questions-in-preparation.pdf>

Bridge To Algebra Answer Key

Bridge Base Online - Play Online Bridge

Free online bridge. Largest bridge site in the world. Duplicate, tournaments, money games, vugraph, more.

Just Play Bridge

Just Play BridgeX

Bridge - 4 Hands

Bridge - 4 HandsX

Bridge Base Online

Play in our Main or Relaxed Bridge Clubs, bring your partner or we'll find one for you Championship Vugraph Matches - watch as International players go head to head in real time

Bridge - Just Declare

Your web browser must have JavaScript enabled in order for this application to display correctly.

BB\$ Top-Up Made Easy | Bridge Store - BBO

Discover the convenience of BBO's Bridge Store. Instant top-up and auto-refill options available to enhance your bridge game experience

BBO Upgraded! New login screen

Jan 7, 2021 · In this release: Redesigned login screen Fixed a bug related to team match creation Other bug fixes and performance optimizations We update the BBO platform as often as ...

GIB System Notes - Bridge Base Online

In general, the GIB robots on BBO use the 2/1 system described below. You can click on any of GIB's bids for an explanation, and pause your mouse over a bid you plan on making to see ...

Summary: Larry Cohen's Lesson on Opening Leads - BBO News

Mar 15, 2021 · For more information, webinars, lots of free bridge tips and content, visit Larry Cohen's website at: www.larryco.com Stay tuned for more free and entertaining bridge lessons ...

Bridge Base Online - Summer 2025 NABC Robot Individual Results

Free online bridge. Largest bridge site in the world. Duplicate, tournaments, vugraph, more.

Bridge Base Online - Play Online Bridge

Free online bridge. Largest bridge site in the world. Duplicate, tournaments, money games, vugraph, more.

Just Play Bridge

Just Play BridgeX

Bridge - 4 Hands

Bridge - 4 HandsX

Bridge Base Online

Play in our Main or Relaxed Bridge Clubs, bring your partner or we'll find one for you Championship Vugraph Matches - watch as International players go head to head in real time

Bridge - Just Declare

Your web browser must have JavaScript enabled in order for this application to display correctly.

BB\$ Top-Up Made Easy | Bridge Store - BBO

Discover the convenience of BBO's Bridge Store. Instant top-up and auto-refill options available to enhance your bridge game experience

BBO Upgraded! New login screen

Jan 7, 2021 · In this release: Redesigned login screen Fixed a bug related to team match creation Other bug fixes and performance optimizations We update the BBO platform as often as ...

GIB System Notes - Bridge Base Online

In general, the GIB robots on BBO use the 2/1 system described below. You can click on any of GIB's bids for an explanation, and pause your mouse over a bid you plan on making to see ...

Summary: Larry Cohen's Lesson on Opening Leads - BBO News

Mar 15, 2021 · For more information, webinars, lots of free bridge tips and content, visit Larry Cohen's website at: www.larryco.com Stay tuned for more free and entertaining bridge lessons ...

Bridge Base Online - Summer 2025 NABC Robot Individual Results

Free online bridge. Largest bridge site in the world. Duplicate, tournaments, vugraph, more.

Unlock your math potential with our comprehensive Bridge to Algebra answer key. Find clear solutions and tips to enhance your understanding. Learn more today!

[Back to Home](#)