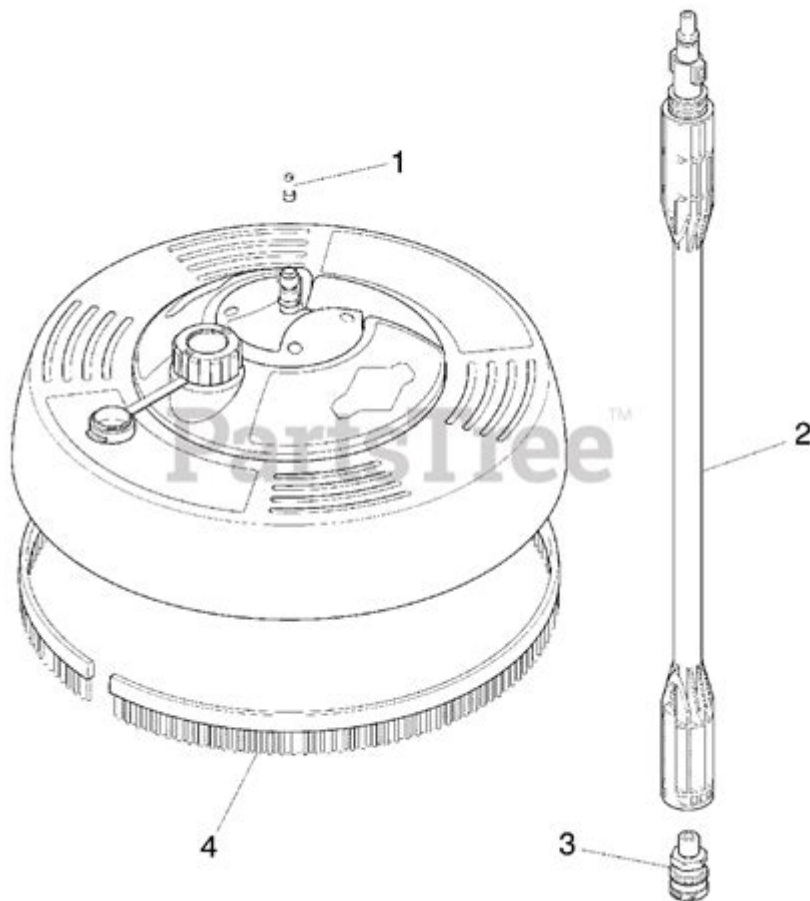


Briggs And Stratton Surface Cleaner Parts Diagram



Briggs and Stratton Surface Cleaner Parts Diagram is an essential tool for anyone looking to maintain, repair, or understand the inner workings of their pressure washer surface cleaner. Surface cleaners are valuable attachments that allow users to clean large flat surfaces quickly and efficiently. Knowing the parts of your surface cleaner and how they work together can greatly enhance its performance and lifespan. This article delves into the various components of a Briggs and Stratton surface cleaner, providing a comprehensive overview of its parts diagram, their functions, and tips for maintenance.

Understanding the Surface Cleaner

Surface cleaners are designed to remove dirt and grime from surfaces such as driveways, patios,

decks, and sidewalks. They utilize high-pressure water jets, which are distributed evenly across the cleaning area, ensuring a more effective clean compared to using a standard pressure washer nozzle.

How a Surface Cleaner Works

A surface cleaner typically consists of two spinning nozzles that create a circular cleaning path. The high-pressure water is directed through these nozzles, effectively lifting dirt and debris from the surface. The design allows for a quick cleaning process while minimizing the chance of streaks or missed spots.

Key Components of the Briggs and Stratton Surface Cleaner

To fully appreciate the Briggs and Stratton Surface Cleaner Parts Diagram, it's essential to understand the key components that make up the unit. Here's a breakdown of the most important parts:

1. Housing

- The outer casing that protects the internal components.
- Made from durable materials to withstand high pressure and wear.

2. Rotating Arms

- These are the arms that hold the nozzles and allow them to spin.
- Usually made from high-quality plastic or metal for durability.

3. Spray Nozzles

- High-pressure nozzles that direct water onto the surface being cleaned.
- The angle and size of the nozzle determine the spray pattern and pressure.

4. Center Shaft

- The central rod that connects the rotating arms and allows them to spin.

- Often requires lubrication to maintain smooth operation.

5. Wheel Assembly

- Many surface cleaners come with wheels to improve maneuverability.
- They should be checked regularly for wear and proper function.

6. Quick Connect Adapter

- This part allows the surface cleaner to connect easily to the pressure washer.
- Ensures a secure and leak-free connection.

7. Handle/Grip

- Provides stability and ease of use while maneuvering the surface cleaner.
- Ergonomically designed for comfort during extended use.

8. Pressure Gauge (optional)

- Some models include a gauge to monitor the pressure being used.
- Helps users adjust settings for optimal cleaning performance.

Briggs and Stratton Surface Cleaner Parts Diagram Overview

The Briggs and Stratton Surface Cleaner Parts Diagram visually represents the components listed above. Understanding this diagram is crucial for users who wish to perform repairs or maintenance. Here's a general overview of how to read the parts diagram:

- **Labels and Numbers:** Each part is usually marked with a number that corresponds to a list of parts with descriptions. Familiarizing yourself with these labels can help when ordering replacements.
- **Assembly Orientation:** The diagram often shows how parts fit together, which can be particularly helpful when reassembling after cleaning or repairs.

- Exploded View: Many diagrams feature an exploded view, showing each component in relation to the others. This helps illustrate how the surface cleaner is constructed.

Common Parts Replacement

Regular maintenance and occasional replacements are necessary to keep your surface cleaner functioning optimally. Here are some common parts that may need replacement over time:

1. Spray Nozzles: Worn nozzles can lead to uneven cleaning. Replace them if you notice streaks or reduced pressure.
2. Wheels: If your surface cleaner becomes difficult to maneuver, check the wheels for wear and replace if necessary.
3. Rotating Arms: If the arms are damaged or not spinning correctly, it may be time to replace them to ensure effective cleaning.
4. Quick Connect Adapter: A damaged adapter can lead to leaks. Ensure a tight seal to maintain pressure.
5. Center Shaft: If the shaft becomes bent or damaged, it can affect the entire cleaning operation.

Maintenance Tips for Your Surface Cleaner

To ensure your Briggs and Stratton surface cleaner operates efficiently, follow these maintenance tips:

1. Regular Cleaning:
 - After each use, rinse the surface cleaner thoroughly to remove dirt and debris.
 - Pay special attention to the nozzles and rotating arms.

2. Inspect Parts:

- Regularly check all components for wear or damage.
- Look for cracks, breaks, or excessive wear on moving parts.

3. Lubrication:

- Apply lubricant to the center shaft and any moving parts to ensure smooth operation.
- Use an appropriate lubricant that is compatible with the materials.

4. Store Properly:

- Store the surface cleaner in a dry location away from extreme temperatures.
- Avoid leaving it outside, as exposure to the elements can accelerate wear.

5. Use Correct Pressure:

- Always use the recommended pressure settings for your surface cleaner.
- Too much pressure can damage components, while too little can lead to ineffective cleaning.

6. Follow Manufacturer Guidelines:

- Always refer to the user manual for specific maintenance schedules and parts replacement guidelines.
- Familiarize yourself with the warranty conditions for your unit.

Conclusion

Understanding the Briggs and Stratton Surface Cleaner Parts Diagram is invaluable for anyone who uses these effective cleaning tools. By familiarizing yourself with the components and their functions, you can ensure your surface cleaner performs at its best for years to come. Regular maintenance, along with timely replacements of worn parts, will help you achieve optimal cleaning results. With proper care, your surface cleaner will continue to save you time and effort in maintaining clean surfaces around your home.

Frequently Asked Questions

What is a Briggs and Stratton surface cleaner parts diagram?

A Briggs and Stratton surface cleaner parts diagram is a visual representation that outlines the components and assembly of a surface cleaner designed for pressure washers, helping users identify parts for maintenance or replacement.

Where can I find a Briggs and Stratton surface cleaner parts diagram?

You can find a Briggs and Stratton surface cleaner parts diagram on the official Briggs and Stratton website, in user manuals, or through authorized repair centers and parts retailers.

How do I read a Briggs and Stratton surface cleaner parts diagram?

To read a Briggs and Stratton surface cleaner parts diagram, familiarize yourself with the legend and part numbers, then trace the connections and placements of each component as represented in the diagram.

What are common parts included in a Briggs and Stratton surface cleaner parts diagram?

Common parts in a Briggs and Stratton surface cleaner parts diagram include the housing, spray nozzles, wheels, handle, and the connection fittings for hoses.

How can I order replacement parts from a Briggs and Stratton surface cleaner parts diagram?

You can order replacement parts by identifying the part numbers from the surface cleaner parts diagram and then purchasing them through the Briggs and Stratton website, local dealers, or online retailers.

Are there any specific tools required to assemble or disassemble parts shown in the Briggs and Stratton surface cleaner parts diagram?

Yes, common tools needed may include screwdrivers, wrenches, and pliers, depending on the specific parts and assembly requirements outlined in the parts diagram.

Can I find troubleshooting tips in the Briggs and Stratton surface cleaner parts diagram?

While the parts diagram mainly focuses on components and assembly, it may include notes or references to common issues, but for detailed troubleshooting, it's advisable to consult the user manual or customer support.

Find other PDF article:

<https://soc.up.edu.ph/04-ink/Book?docid=aZg74-4415&title=airmax-inverter-remote-control-manual.pdf>

Briggs And Stratton Surface Cleaner Parts Diagram

French Product Registration | Briggs & Stratton

Register your Briggs & Stratton product to get faster and more efficient customer service for repair and parts.

Google Sitemap - briggsandstratton.ca

Find the right spark plug and gap for engine | Briggs & Stratton Troubleshooting small engine problems | Briggs & Stratton How to Clean a ...

www.briggsandstratton.ca

Briggs Engine Series Elite Running Watts* 16 Volts 849 Running Amps 246 Surge Amps 564 Engine Displacement (cc) 56 OHV Engine true Fuel Tank Capacity ...

Small Engines and Lawn Mower Parts | Briggs & Stratton

Learn more about small engines and shop for Briggs engine parts, generators & outdoor power products.

Accessibility Statement

Briggs and Stratton has invested a significant amount of resources to help ensure that its website is made easier to use and more accessible for people ...

[French Product Registration | Briggs & Stratton](#)

Register your Briggs & Stratton product to get faster and more efficient customer service for repair and parts.

[Google Sitemap - briggsandstratton.ca](#)

Find the right spark plug and gap for engine | Briggs & Stratton Troubleshooting small engine problems | Briggs & Stratton How to Clean a Carburetor? | Briggs & Stratton How to test and ...

[www.briggsandstratton.ca](#)

Briggs Engine Series Elite Running Watts* 16 Volts 849 Running Amps 246 Surge Amps 564 Engine Displacement (cc) 56 OHV Engine true Fuel Tank Capacity (gal) 656 Oil Capacity (oz) ...

Small Engines and Lawn Mower Parts | Briggs & Stratton

Learn more about small engines and shop for Briggs engine parts, generators & outdoor power products.

Accessibility Statement

Briggs and Stratton has invested a significant amount of resources to help ensure that its website is made easier to use and more accessible for people with disabilities, with the strong belief ...

FAQ & Safety Tips | Briggs & Stratton

Lawn mower or snow blower won't start? Use this Briggs & Stratton small engine repair guide for troubleshooting common problems & issues with small engines. [Read More](#)

Snow Blowers | Briggs & Stratton

Get outside and power through the cold quickly and effortlessly with a Briggs & Stratton® Snow Blower. With many models and features to choose from, you'll be equipped to take on Mother ...

[Search - briggsandstratton.ca](#)

Narrow your results to the desired language. All Languages All LanguagesAlbanianArabicAzerbaijaniBulgarianBurmeseChineseChinese ...

Please select your language - briggsandstratton.ca

Thank you for registering your Briggs & Stratton product (s). Click the buttons below to download or email a copy of your registration form.

[Sélectionnez votre langue - briggsandstratton.ca](#)

Renseignements pour les consommateurs * Indicates a required field Civilite Please Select Dr. M. Mlle. Mme. Rev. Prénom Nom de famille Rue Pays Province Please Select Alsace Aquitaine ...

Explore our comprehensive Briggs and Stratton surface cleaner parts diagram to easily identify components and enhance your maintenance. [Learn more for expert tips!](#)

[Back to Home](#)