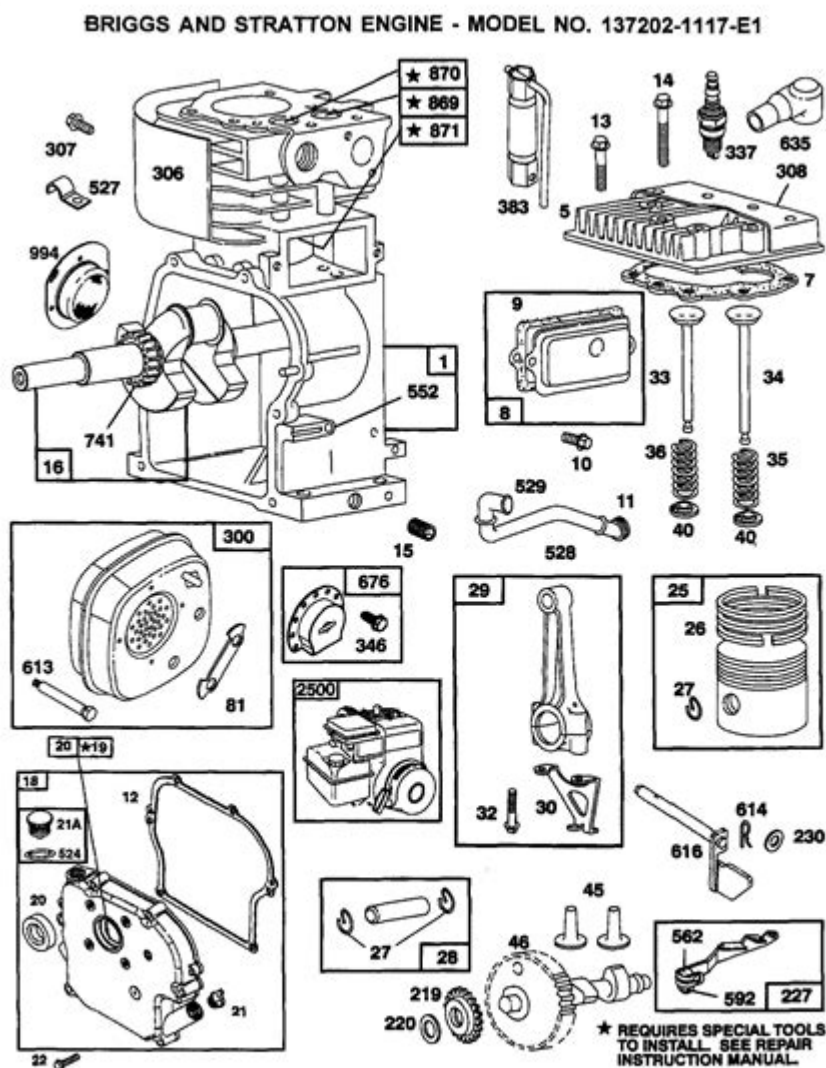


Briggs Stratton 31x7070777e2 Parts Manual



9/99

Briggs Stratton 31X7070777E2 Parts Manual

When it comes to maintaining outdoor power equipment, having access to a comprehensive parts manual is essential. The Briggs Stratton 31X7070777E2 Parts Manual is a vital resource for anyone looking to service or repair their Briggs & Stratton engine. This manual provides detailed information about the various components of the engine, including specifications, part numbers, and assembly instructions. Understanding the contents of this manual can significantly simplify the repair process and ensure that your equipment is running efficiently and effectively. In this article, we will explore the various sections of the Briggs Stratton 31X7070777E2 Parts Manual, its significance, and how to use it effectively.

Overview of Briggs & Stratton Engines

Briggs & Stratton is one of the leading manufacturers of small engines for outdoor power equipment. Known for their reliability and performance, these engines are commonly found in lawn mowers, generators, pressure washers, and other outdoor tools. The 31X7070777E2 model is part of a series of engines designed for durability and ease of maintenance. Understanding the parts of this engine is crucial for operators and technicians alike, as it helps in troubleshooting issues and performing routine maintenance.

Importance of a Parts Manual

A parts manual serves several important functions:

1. Identification of Parts

The manual provides a complete list of all the parts that make up the engine. This includes everything from the engine block to the smallest screws and bolts. Accurate identification of parts is key when ordering replacements.

2. Specifications and Dimensions

Each part in the manual comes with specifications and dimensions, which are critical for ensuring that the replacement parts fit correctly. This information helps prevent compatibility issues that could arise from using incorrect parts.

3. Assembly Diagrams

The manual typically includes detailed diagrams showing how the parts fit together. These illustrations are invaluable for anyone attempting to reassemble the engine after servicing or replacing components.

4. Maintenance Guidelines

In addition to parts identification, the manual often includes maintenance guidelines. These guidelines can help users perform routine maintenance tasks, such as oil changes, filter replacements, and spark plug

inspections, thereby extending the life of the engine.

Key Sections of the Parts Manual

The Briggs Stratton 31X7070777E2 Parts Manual is organized into several key sections that are designed to make navigation easier.

1. Table of Contents

The table of contents provides an overview of the manual's structure, allowing users to quickly locate specific parts or sections. It typically lists the main sections, such as engine components, electrical systems, and maintenance guidelines.

2. Engine Components

This section provides a breakdown of all major engine components, including:

- Engine Block: The core of the engine, housing the cylinders and other key components.
- Cylinder Head: Contains the combustion chamber and valves.
- Piston and Rings: Responsible for compressing the fuel-air mixture and generating power.
- Crankshaft: Converts linear motion from the pistons into rotational motion.
- Timing Mechanism: Ensures that the engine's valves open and close at the correct times.

Each component is usually listed with a part number for easy ordering.

3. Electrical System Parts

The electrical system section details components such as:

- Ignition Coil: Generates the spark necessary for combustion.
- Starter Motor: Provides the initial power to start the engine.
- Wiring Harness: Connects various electrical components.
- Battery (if applicable): Stores electrical energy for starting the engine.

4. Fuel and Air System

This section covers parts related to fuel delivery and air intake, including:

- Carburetor: Mixes fuel with air for combustion.
- Fuel Pump: Delivers fuel from the tank to the carburetor.
- Air Filter: Prevents debris from entering the engine.

5. Maintenance and Troubleshooting

The maintenance section generally includes:

- Routine Maintenance Tasks: Such as changing oil, replacing air filters, and inspecting spark plugs.
- Common Troubleshooting Tips: Helps users diagnose issues based on symptoms like hard starting or poor performance.

6. Ordering Replacement Parts

This section provides guidance on how to order parts, including:

- Part Numbers: Essential for ensuring that you order the correct components.
- Authorized Dealers: Lists where to find genuine Briggs & Stratton parts.
- Warranty Information: Details about warranties on parts and services.

How to Use the Parts Manual Effectively

To make the most of the Briggs Stratton 31X7070777E2 Parts Manual, consider the following tips:

1. Familiarize Yourself with the Manual

Take the time to read through the manual, especially the table of contents and key sections. Understanding where to find specific information will save you time during repairs.

2. Keep it Accessible

Keep a physical or digital copy of the manual readily accessible in your workshop. This way, you can refer to it whenever you need to order parts or troubleshoot issues.

3. Take Notes

As you work through repairs or maintenance tasks, take notes directly in the manual or in a separate log. Documenting any changes or observations can be helpful for future reference.

4. Consult Online Resources

In addition to the manual, consider consulting online forums, videos, and other resources. Many experienced users share tips and solutions for common problems that may not be covered in the manual.

Conclusion

The Briggs Stratton 31X7070777E2 Parts Manual is an indispensable tool for anyone involved with the maintenance and repair of this engine model. By providing detailed information about components, specifications, and assembly instructions, the manual empowers users to perform their own repairs and maintenance confidently. Whether you're a seasoned technician or a first-time user, understanding how to navigate and utilize this manual can lead to improved performance and extended lifespan of your Briggs & Stratton equipment. Always remember that regular maintenance not only ensures the reliability of your engine but also enhances safety during operation.

Frequently Asked Questions

What is the purpose of the Briggs Stratton 31X7070777E2 parts manual?

The Briggs Stratton 31X7070777E2 parts manual provides detailed information on the parts and components of the engine, including diagrams, specifications, and part numbers to assist with maintenance and repairs.

Where can I find a digital copy of the Briggs Stratton 31X7070777E2 parts

manual?

A digital copy of the Briggs Stratton 31X7070777E2 parts manual can typically be found on the official Briggs & Stratton website under their support or downloads section, or through authorized dealers and service centers.

What are common replacement parts listed in the Briggs Stratton 31X7070777E2 parts manual?

Common replacement parts listed in the manual include the air filter, spark plug, oil filter, fuel filter, and various gaskets, which are essential for maintaining engine performance.

How can I use the Briggs Stratton 31X7070777E2 parts manual to troubleshoot engine issues?

You can use the Briggs Stratton 31X7070777E2 parts manual to troubleshoot engine issues by referencing the diagrams to identify components, checking part numbers for compatibility, and following maintenance schedules and procedures outlined in the manual.

Is the Briggs Stratton 31X7070777E2 parts manual applicable to other engine models?

While the Briggs Stratton 31X7070777E2 parts manual is specifically designed for that engine model, some parts and procedures may be applicable to similar models; however, it's important to verify compatibility before use.

Find other PDF article:

<https://soc.up.edu.ph/22-check/pdf?trackid=pdd15-6861&title=fha-rental-income-calculation-worksheet.pdf>

[Briggs Stratton 31x7070777e2 Parts Manual](#)

French Product Registration | Briggs & Stratton

Register your Briggs & Stratton product to get faster and more efficient customer service for repair and parts.

Google Sitemap - briggsandstratton.ca

Find the right spark plug and gap for engine | Briggs & Stratton Troubleshooting small engine problems | Briggs & Stratton How to Clean a Carburetor? | Briggs & Stratton How to test and ...

www.briggsandstratton.ca

Briggs Engine Series Elite Running Watts* 16 Volts 849 Running Amps 246 Surge Amps 564 Engine Displacement (cc) 56 OHV Engine true Fuel Tank Capacity (gal) 656 Oil Capacity (oz) ...

Small Engines and Lawn Mower Parts | Briggs & Stratton

Learn more about small engines and shop for Briggs engine parts, generators & outdoor power products.

Accessibility Statement

Briggs and Stratton has invested a significant amount of resources to help ensure that its website is made easier to use and more accessible for people with disabilities, with the strong belief ...

FAQ & Safety Tips | Briggs & Stratton

Lawn mower or snow blower won't start? Use this Briggs & Stratton small engine repair guide for troubleshooting common problems & issues with small engines. [Read More](#)

Snow Blowers | Briggs & Stratton

Get outside and power through the cold quickly and effortlessly with a Briggs & Stratton® Snow Blower. With many models and features to choose from, you'll be equipped to take on Mother ...

Search - briggsandstratton.ca

Narrow your results to the desired language. All Languages All LanguagesAlbanianArabicAzerbaijaniBulgarianBurmeseChineseChinese ...

Please select your language - briggsandstratton.ca

Thank you for registering your Briggs & Stratton product (s). Click the buttons below to download or email a copy of your registration form.

Sélectionnez votre langue - briggsandstratton.ca

Renseignements pour les consommateurs * Indicates a required field Civilite Please Select Dr. M. Mlle. Mme. Rev. Prénom Nom de famille Rue Pays Province Please Select Alsace Aquitaine ...

French Product Registration | Briggs & Stratton

Register your Briggs & Stratton product to get faster and more efficient customer service for repair and parts.

Google Sitemap - briggsandstratton.ca

Find the right spark plug and gap for engine | Briggs & Stratton Troubleshooting small engine problems | Briggs & Stratton How to Clean a Carburetor? | Briggs & Stratton How to test and ...

www.briggsandstratton.ca

Briggs Engine Series Elite Running Watts* 16 Volts 849 Running Amps 246 Surge Amps 564 Engine Displacement (cc) 56 OHV Engine true Fuel Tank Capacity (gal) 656 Oil Capacity (oz) ...

Small Engines and Lawn Mower Parts | Briggs & Stratton

Learn more about small engines and shop for Briggs engine parts, generators & outdoor power products.

Accessibility Statement

Briggs and Stratton has invested a significant amount of resources to help ensure that its website is made easier to use and more accessible for people with disabilities, with the strong belief ...

FAQ & Safety Tips | Briggs & Stratton

Lawn mower or snow blower won't start? Use this Briggs & Stratton small engine repair guide for troubleshooting common problems & issues with small engines. [Read More](#)

Snow Blowers | Briggs & Stratton

Get outside and power through the cold quickly and effortlessly with a Briggs & Stratton® Snow Blower. With many models and features to choose from, you'll be equipped to take on Mother ...

Search - [briggsandstratton.ca](#)

Narrow your results to the desired language. All Languages All

LanguagesAlbanianArabicAzerbaijaniBulgarianBurmeseChineseChinese ...

Please select your language - [briggsandstratton.ca](#)

Thank you for registering your Briggs & Stratton product (s). Click the buttons below to download or email a copy of your registration form.

Sélectionnez votre langue - [briggsandstratton.ca](#)

Renseignements pour les consommateurs * Indicates a required field Civilite Please Select Dr. M. Mlle. Mme. Rev. Prénom Nom de famille Rue Pays Province Please Select Alsace Aquitaine ...

"Unlock the essential Briggs Stratton 31x7070777e2 parts manual for your engine. Find detailed diagrams and parts lists. Learn more to keep your equipment running smoothly!"

[Back to Home](#)