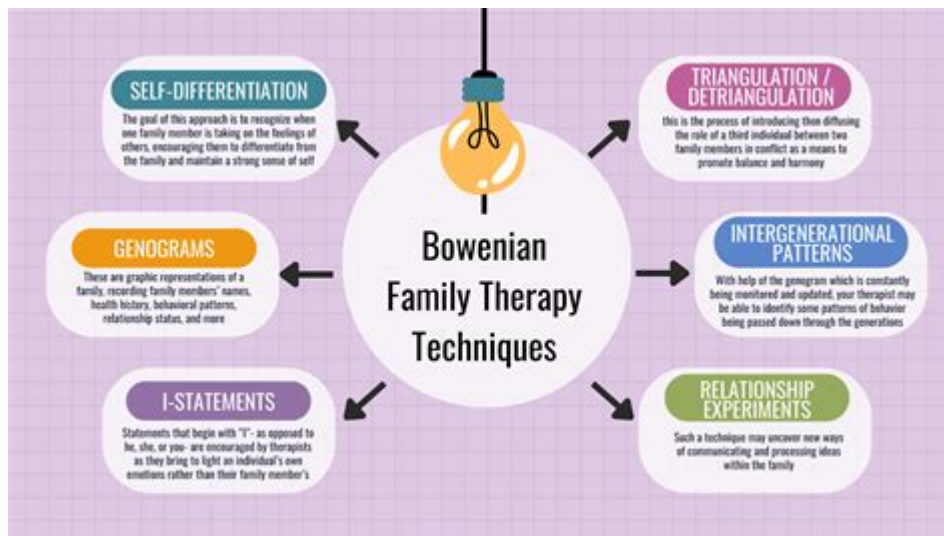


Bowen Family Therapy Treatment Plan Example



Bowen family therapy treatment plan example is an essential tool for therapists looking to apply the principles of Bowen Family Systems Theory in their practice. This therapeutic approach, developed by Dr. Murray Bowen, emphasizes the importance of understanding family dynamics and the intergenerational transmission of behaviors and emotions. In this article, we will explore a comprehensive treatment plan example that incorporates the key concepts of Bowen family therapy, along with the steps involved, goals, and techniques for effective implementation.

Understanding Bowen Family Therapy

Bowen family therapy is rooted in the idea that individuals cannot be fully understood in isolation from their family systems. The therapy focuses on the emotional connections between family members and how these relationships impact individual behavior. Key concepts include:

- **Differentiation of Self:** The ability of an individual to maintain their own beliefs and emotions while remaining connected to their family.
- **Emotional Triangles:** The interaction between three people, which can create stability or dysfunction in relationships.
- **Family Projection Process:** The way parents transmit their emotional issues to their children.
- **Multigenerational Transmission Process:** How family patterns and behaviors are passed down through generations.

These concepts provide the framework for developing a treatment plan that addresses the unique needs of families seeking help.

Creating a Bowen Family Therapy Treatment Plan

A treatment plan in Bowen family therapy should be tailored to the specific dynamics and issues presented by the family. Below is an outline of a sample treatment plan, which can be adapted to fit different family situations.

1. Assessment Phase

The initial phase involves gathering relevant information about the family. This can include:

- Family history and structure
- Current issues and presenting problems
- Relationship dynamics and conflicts
- Individual family member's emotional functioning

The therapist may conduct interviews with each family member separately and together to identify patterns and themes.

2. Setting Treatment Goals

Once the assessment is complete, the therapist collaborates with the family to establish specific, measurable goals. Common goals in Bowen family therapy may include:

1. Enhancing differentiation of self among family members.
2. Improving communication skills within the family.
3. Reducing anxiety and emotional reactivity in relationships.
4. Identifying and altering dysfunctional family patterns.

These goals should be realistic and achievable, guiding the therapy process.

3. Interventions and Techniques

Bowen family therapy employs a variety of interventions and techniques to facilitate change. Some of these include:

- **Genograms:** A visual representation of family relationships and patterns that allows the therapist and family members to explore intergenerational issues.
- **Emotionally Focused Conversations:** Helping family members express their feelings and experiences in a safe space.
- **Role-Playing:** Allowing family members to practice communication and conflict resolution skills in a supportive environment.
- **Self-Reflection Exercises:** Encouraging individuals to reflect on their own emotions and reactions within the family context.

These interventions are designed to promote insight and foster healthier relationships.

4. Monitoring Progress

Regularly reviewing the treatment plan and assessing progress is crucial. The therapist can schedule periodic check-ins with the family to evaluate:

- Progress towards established goals
- Changes in family dynamics and individual behaviors
- Effectiveness of interventions used

Adjustments to the treatment plan may be necessary based on the family's evolving needs.

5. Termination and Follow-Up

As the family achieves their goals, the therapist will begin the termination

phase. This includes:

- Reviewing the progress made during therapy
- Discussing the skills and strategies learned
- Planning for potential future challenges and how to address them

Follow-up sessions can be scheduled to ensure that the family continues to apply what they have learned and to provide additional support if needed.

Challenges in Bowen Family Therapy

While Bowen family therapy can be highly effective, it is not without challenges. Some common obstacles include:

- **Resistance to Change:** Family members may be resistant to exploring uncomfortable emotions or altering long-standing behaviors.
- **Complex Family Dynamics:** Larger or more complicated family systems may require more time and effort to navigate.
- **Emotional Reactivity:** High levels of anxiety or emotional reactivity can impede progress and make communication difficult.

It is essential for the therapist to remain attuned to these challenges and employ strategies to address them effectively.

Conclusion

In conclusion, a well-structured **Bowen family therapy treatment plan example** serves as a roadmap for therapists and families navigating the complexities of emotional relationships. By focusing on differentiation, communication, and understanding family dynamics, therapists can help families achieve lasting change. The collaborative nature of the treatment plan empowers families to take an active role in their healing process, ultimately leading to healthier relationships and improved emotional well-being.

Frequently Asked Questions

What is a Bowen Family Therapy treatment plan?

A Bowen Family Therapy treatment plan is a structured approach used by therapists to address relational patterns and dynamics within families, focusing on improving communication, reducing anxiety, and fostering emotional connections.

What are the key components of a Bowen Family Therapy treatment plan?

Key components include assessment of family dynamics, identifying emotional triangles, setting therapeutic goals, intervention strategies, and ongoing evaluation of progress.

How does a therapist assess family dynamics in Bowen Family Therapy?

Therapists assess family dynamics through interviews, observation, and genograms, which visually map out relationships, patterns, and emotional connections among family members.

What is the role of differentiation of self in a Bowen Family Therapy treatment plan?

Differentiation of self is crucial; it refers to the ability of individuals to maintain their sense of self while remaining emotionally connected to their family, and it is a primary goal in Bowen therapy.

Can Bowen Family Therapy help with specific issues like anxiety or depression?

Yes, Bowen Family Therapy can help address anxiety and depression by improving family communication and reducing emotional reactivity, which can alleviate symptoms.

What techniques are commonly used in a Bowen Family Therapy treatment plan?

Common techniques include genogram construction, emotional coaching, role-playing, and guided discussions to explore family history and dynamics.

How long does a typical Bowen Family Therapy treatment plan last?

The duration of a Bowen Family Therapy treatment plan can vary, but it typically lasts several months to a year, depending on the complexity of the

issues and the family's needs.

What are some common goals in a Bowen Family Therapy treatment plan?

Common goals include enhancing communication, increasing emotional awareness, reducing anxiety, resolving conflicts, and promoting healthier family relationships.

How does the therapist maintain neutrality in Bowen Family Therapy?

Therapists maintain neutrality by not taking sides, encouraging open dialogue among family members, and promoting understanding of different perspectives without judgment.

Is Bowen Family Therapy suitable for all types of families?

Yes, Bowen Family Therapy is suitable for various family structures, including nuclear families, blended families, and extended families, as it focuses on relational patterns that affect all types of family dynamics.

Find other PDF article:

<https://soc.up.edu.ph/02-word/files?docid=XZh48-8481&title=6-1-analyze-translations-answer-key.pdf>

Bowen Family Therapy Treatment Plan Example

YouTube Help - Google Help

Learn more about YouTube YouTube help videos Browse our video library for helpful tips, feature overviews, and step-by-step tutorials. YouTube Known Issues Get information on reported ...

Create an account on YouTube - Computer - YouTube Help

Once you've signed in to YouTube with your Google Account, you can create a YouTube channel on your account. YouTube channels let you upload videos, leave comments, and create playlists.

Sign in and out of YouTube - Computer - YouTube Help

Signing in to YouTube allows you to access features like subscriptions, playlists and purchases, and history.

Download the YouTube app - Android - YouTube Help - Google ...

The YouTube app is available on a wide range of devices, but there are some minimum system requirements and device-specific limitations: Android: Requires Android 8.0 or later.

Use your Google Account for YouTube

After signing up for YouTube, signing in to your Google account on another Google service will automatically sign you in to YouTube. Deleting your Google Account will delete your YouTube ...

Get help signing in to YouTube - YouTube Help - Google Help

To make sure you're getting the directions for your account, select from the options below.

Create a YouTube channel - Google Help

Create a YouTube channel for a Brand Account that you already manage by choosing the Brand Account from the list. If this Brand Account already has a channel, you can't create a new one. ...

Utiliser YouTube Studio

Utiliser YouTube Studio YouTube Studio est la plate-forme des créateurs. Elle rassemble tous les outils nécessaires pour gérer votre présence en ligne, développer votre chaîne, interagir avec ...

Understand three-minute YouTube Shorts

Oct 15, 2024 · Understand three-minute YouTube Shorts You can soon start creating YouTube Shorts up to three minutes in length. This gives you more time to tell your stories, showcase ...

Meet YouTube's revenue thresholds for payment - YouTube Help

AdSense Program policies and AdSense for YouTube Terms and Conditions or AdSense Terms and Conditions (whichever is applicable) If you have a single channel associated with your ...

Yahoo Mail

The New Yahoo Mail.Smart, Clean, Powerful. Connect Your Gmail Create a New Yahoo Email

Yahoo

Jul 27, 2005 · News, email and search are just the beginning. Discover more every day. Find your yodel.

Login - Sign in to Yahoo - Yahoo Mail

Sign in to access the best in class Yahoo Mail, breaking local, national and global news, finance, sports, music, movies... You get more out of the web, you get ...

Yahoo Mail | Email with smart features and top-notch security

Yahoo Mail: Your smarter, faster, free email solution. Organize your inbox, protect your privacy, and tackle tasks efficiently with AI-powered features ...

Yahoo Mail - My Yahoo

Take a trip into an upgraded, more organized inbox with Yahoo Mail. Login and start exploring all the free, organizational tools for your email. ...

Explore a comprehensive Bowen family therapy treatment plan example that enhances family dynamics. Learn more about effective strategies for lasting change!

[Back to Home](#)