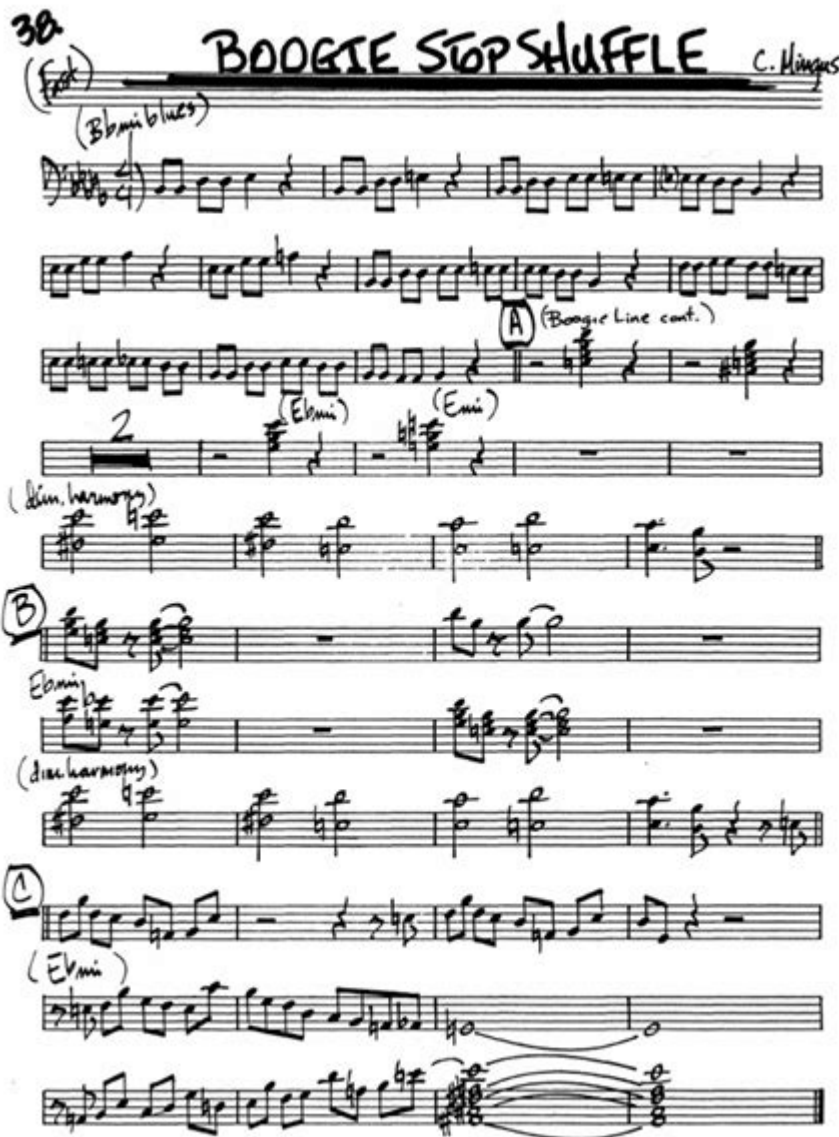


# Boogie Stop Shuffle Don Owens Music



**Boogie Stop Shuffle Don Owens Music** is a fascinating topic that delves into the world of rhythm and blues, showcasing the contributions of a talented musician and producer. Don Owens is often celebrated for his significant impact on the music industry, particularly in the realm of blues and jazz. This article will explore the essence of "Boogie Stop Shuffle," its origins, Don Owens' role in its creation, and its lasting legacy.

## The Origins of Boogie Stop Shuffle

The term "Boogie Stop Shuffle" refers to a specific style of music that combines elements of boogie-woogie, blues, and jazz. This genre emerged in

the early 20th century and has since evolved, influencing various styles and artists.

## **The Boogie-Woogie Influence**

Boogie-woogie is a piano-based genre that became popular in the late 1920s and 1930s. Characterized by its upbeat tempo and repetitive bass lines, boogie-woogie laid the groundwork for the shuffle rhythm commonly found in jazz and blues.

- Key Characteristics of Boogie-Woogie:
- Strong, syncopated bass lines
- Fast-paced tempo
- Improvisational elements
- Use of 12-bar blues structure

As boogie-woogie gained popularity, musicians began to incorporate its elements into their work, leading to the development of various sub-genres, including the shuffle rhythm that would later be associated with Don Owens.

## **The Evolution of Shuffle Rhythms**

Shuffle rhythms are essential in blues and jazz music, providing a swinging feel that encourages dancing and improvisation. The shuffle rhythm differs from straight rhythms, emphasizing the off-beats and creating a distinctive groove.

- Characteristics of Shuffle Rhythms:
- Uneven division of beats (long-short pattern)
- Syncopation that emphasizes the backbeat
- Strong ties to dance styles

As artists experimented with shuffle rhythms, the genre evolved, allowing for creative expression and innovation, which would later influence Don Owens' music.