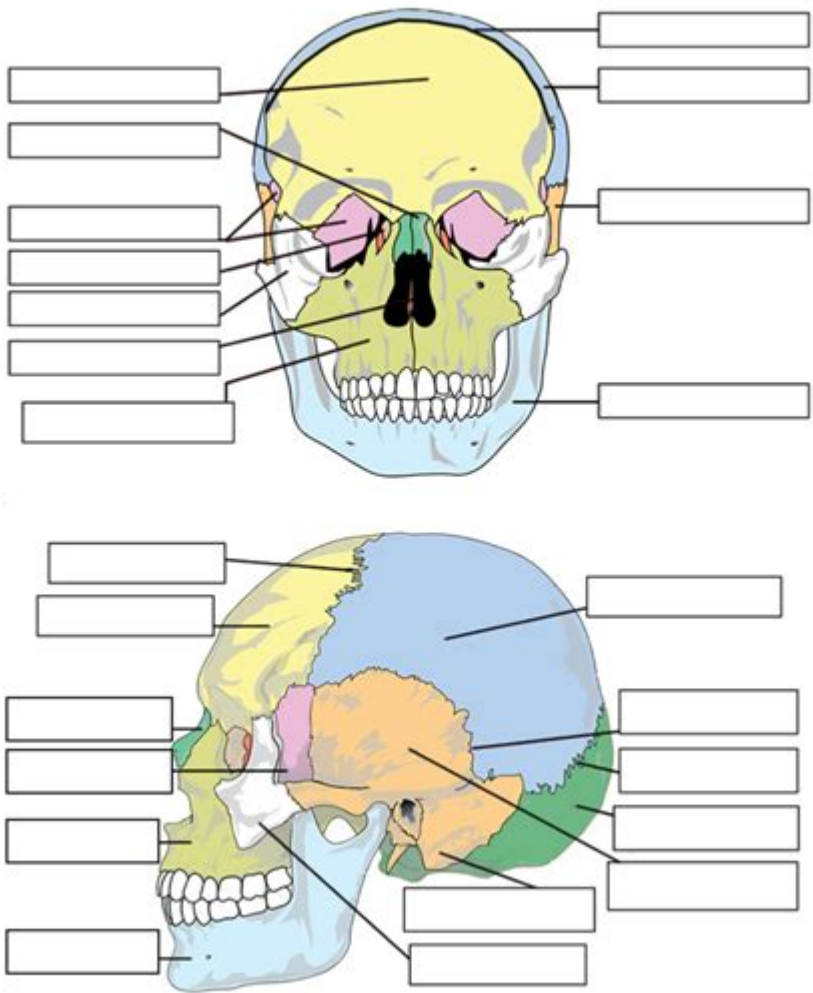


Bones Of The Skull Worksheet

Skull Labeling



Bones of the skull worksheet is an essential educational tool for students and educators alike, providing a structured way to learn about the complex anatomy of the human skull. The human skull is a fascinating structure composed of numerous bones that serve various critical functions, including protection of the brain, support for the face, and facilitation of the senses. This article delves into the anatomy of the skull, the importance of understanding its bones, and how a worksheet can enhance the learning experience.

Understanding the Anatomy of the Skull

The human skull comprises two main parts: the cranium and the facial skeleton. Each of these parts is made up of several bones that contribute to the overall structure and function of the skull.

The Cranium

The cranium serves as the protective case for the brain and is made up of eight bones. These bones are:

1. Frontal Bone - Forms the forehead and the upper part of the eye sockets.
2. Parietal Bones (2) - Located on the sides and roof of the skull, these bones meet at the top of the head.
3. Temporal Bones (2) - Found beneath the parietal bones, these bones house the structures of the ears.
4. Occipital Bone - Forms the back and base of the skull; it contains the foramen magnum, where the spinal cord passes through.
5. Sphenoid Bone - A complex bone located at the base of the skull, it contributes to the eye socket and helps form the cranial cavity.
6. Ethmoid Bone - A light and spongy bone located between the eyes; it forms part of the nasal cavity and the orbits.

These eight bones are crucial for protecting the brain and supporting the structures of the face.

The Facial Skeleton

The facial skeleton consists of 14 bones that form the structure of the face. These bones include:

1. Maxilla (2) - The upper jawbone, which holds the upper teeth and forms part of the eye sockets and nasal cavity.
2. Mandible - The lower jawbone, the only movable bone of the skull, allowing for chewing and speaking.
3. Zygomatic Bones (2) - Also known as the cheekbones, they contribute to the prominence of the cheeks and the lateral wall of the eye sockets.
4. Nasal Bones (2) - Small bones that form the bridge of the nose.
5. Lacrimal Bones (2) - Small bones located in the medial wall of the eye sockets; they contain the tear ducts.
6. Palatine Bones (2) - Form the back part of the hard palate and contribute to the floor of the nasal cavity.
7. Inferior Nasal Conchae (2) - Thin, curved bones that project into the nasal cavity and help filter air.
8. Vomer - A single bone that forms part of the nasal septum.

Together, these bones create the facial structure and play vital roles in the functions of eating, breathing, and communication.

Functions of the Skull Bones

The bones of the skull are not merely structural; they also serve several important functions:

- **Protection:** The primary function of the skull is to encase and protect the brain from injury. The rigid structure forms a barrier against physical trauma.
- **Support:** The skull provides support for the face and the structures associated with it, including the jaw, eyes, and nose.
- **Facilitation of Sensory Functions:** Many bones of the skull house sensory organs. For instance, the eye sockets protect the eyes, while the nasal cavity is involved in the sense of smell.
- **Articulation:** The mandible allows for the movement necessary for chewing and speaking, making the skull essential for communication and nutrition.
- **Formation of Cavities:** The skull contains several cavities, such as the cranial cavity (housing the brain), the orbits (eye sockets), and the nasal cavity, which are crucial for various functions.

Importance of a Bones of the Skull Worksheet

A **bones of the skull worksheet** is a valuable resource for students learning about human anatomy. It can serve several educational purposes:

1. Reinforcement of Learning

Worksheets provide an opportunity for students to reinforce what they have learned in class. By filling out a worksheet, students can actively engage with the material, helping to solidify their understanding of the skull's anatomy.

2. Visual Identification

Many worksheets include diagrams of the skull, allowing students to visually identify and label the various bones. This visual component is crucial for spatial learning and helps students remember the bones' locations and functions.

3. Assessment of Knowledge

Worksheets can serve as an assessment tool for educators to gauge students' understanding. Through quizzes, labeling exercises, and identification tasks, teachers can identify areas where students may need

further instruction or support.

4. Interactive Learning

Worksheets can be designed to include interactive elements, such as puzzles or matching exercises, making learning more engaging. This approach can foster a positive learning environment and encourage students to take an active role in their education.

Creating an Effective Bones of the Skull Worksheet

When designing a worksheet focused on the bones of the skull, consider including the following elements:

- **Diagrams:** Provide labeled diagrams of the skull for students to refer to and fill in.
- **Labeling Exercises:** Create sections where students must label the different bones based on their knowledge.
- **Multiple Choice Questions:** Include questions that assess students' understanding of the functions and locations of the bones.
- **Fill-in-the-Blank Sections:** Create sentences about the skull's anatomy where students must fill in missing terms.
- **Fun Facts:** Add interesting facts about the skull and its bones to engage students further.

Conclusion

The **bones of the skull worksheet** is an invaluable educational resource that enhances the learning experience about human anatomy. By understanding the bones of the skull, students gain insights into the protective and functional roles these bones play in the human body. Whether used for reinforcement, assessment, or interactive learning, a well-structured worksheet can significantly contribute to students' comprehension of this complex subject. Through engaging and informative materials, educators can inspire a deeper appreciation for the intricacies of human anatomy, fostering a generation of informed individuals equipped with essential knowledge about their own bodies.

Frequently Asked Questions

What are the main bones of the skull covered in a typical worksheet?

A typical worksheet on the bones of the skull includes the frontal bone, parietal bones, temporal bones, occipital bone, sphenoid bone, and ethmoid bone.

How can a bones of the skull worksheet help students learn anatomy?

It provides visual representation and labeling exercises that enhance memorization and understanding of the skull's structure and function.

What activities might be included in a bones of the skull worksheet?

Activities may include labeling diagrams, matching bones with their functions, fill-in-the-blank exercises, and multiple-choice questions.

Why is it important to study the bones of the skull?

Studying the bones of the skull is crucial for understanding human anatomy, cranial protection, and the basis for clinical practices in medicine and dentistry.

Are there online resources available for bones of the skull worksheets?

Yes, many educational websites offer downloadable worksheets, interactive quizzes, and online games focused on the anatomy of the skull.

What age group is suitable for bones of the skull worksheets?

These worksheets are typically suitable for middle school and high school students studying biology or human anatomy.

Can bones of the skull worksheets be integrated into a broader curriculum?

Absolutely, they can be integrated into biology, health sciences, or art classes focusing on human anatomy and structure.

What is the significance of the sutures in the skull when using a worksheet?

Sutures are important for understanding how skull bones are joined together and can be included in worksheets to illustrate skull development and flexibility.

How can educators assess understanding from a bones of the skull worksheet?

Educators can assess understanding through quiz results, class discussions, and practical applications such as identifying bones in models or diagrams.

Find other PDF article:

<https://soc.up.edu.ph/26-share/files?ID=BXf66-4513&title=habits-of-the-household-study-guide.pdf>

Bones Of The Skull Worksheet

□□□□□□□□ **Bones)** □□□□□□□□□□□□□□ **10** □

11 booth bones 2.

□□□□□□□*backbone*□□□□□? - □□

```
1.backbone[0] = resnet VGG ...
```

Skull & Bones - 1

Skull & Bones X
Chinajoy

██████████**BONES**██████████ - ███

bones 3~6 BD

□□□□□□□*BONES*□□□□□ - □□

BONES 1998

_____ - _____

```

16 Bones Harold overmeyer
Harold overmeyer Harold overmeyer ...

```

Bones Both - 00

[illegible]

□□□□□□□□ *Bones*) □□□□□□□□□□□□□□ 10

0000bug00000000 00000 0000000000000000 0001.50000000 000010000000 00001000000000 000 000000
 00000000 00000000000000 000000007000000000000000000000 ...

Don't make no bones about it? - Don't

What the devil does a mentor do when the sinner make no bones about confessing his sin?

~~~~~B~up~~~~~bones~~~~~  
~~~~~zood~~B~~~~~B~~~~~30 ...

~~~~~Bones)~~~~~10~  
~~~~~11~~~~booth~~~~bones~~~~~ 2.~~~~~  
~~~~~

~~~~~backbone~~~~~? - ~~~~  
1.backbone~~~~~
~~~~~resnet VGG~~~~~ ...

~~~~~Skull & Bones~~~ - ~~~~  
~~~~~Skull & Bones~~~~~  
~~~~~Chinajoy~~~~~

~~~~~BONES~~~~~ - ~~~~  
~~~~~bones~~~~~3~6~~~~~BD~~~~~  
~~~

~~~~~BONES~~~~~ - ~~~~  
BONES~1998~~~~~
~~~~~

~~~~~ - ~~~~  
~~~~~16~~~~~Bones~~~~~Harold overmeyer~~~~~  
~~~~~Harold overmeyer~~~~~Harold overmeyer~~~~~ ...

~~~~~Bones~Both~~~~~ - ~~~~  
~~~~~bones~~~~~  
~~~~~PS~~~~~ ...

~~~~~Bones)~~~~~10~  
~~~~~bug~~~~~1.5~~~~~1~~~~~1~~~~~  
~~~~~7~~~~~ ...

~~~~~make no bones about~~~~~? - ~~~~  
What the devil does a mentor do when the sinner make no bones about confessing his sin?

~~~~~B~up~~~~~bones~~~~~  
~~~~~zood~~B~~~~~B~~~~~30 ...

Explore our comprehensive 'bones of the skull worksheet' to enhance your understanding of skull anatomy. Perfect for students and educators! Learn more today!

[Back to Home](#)