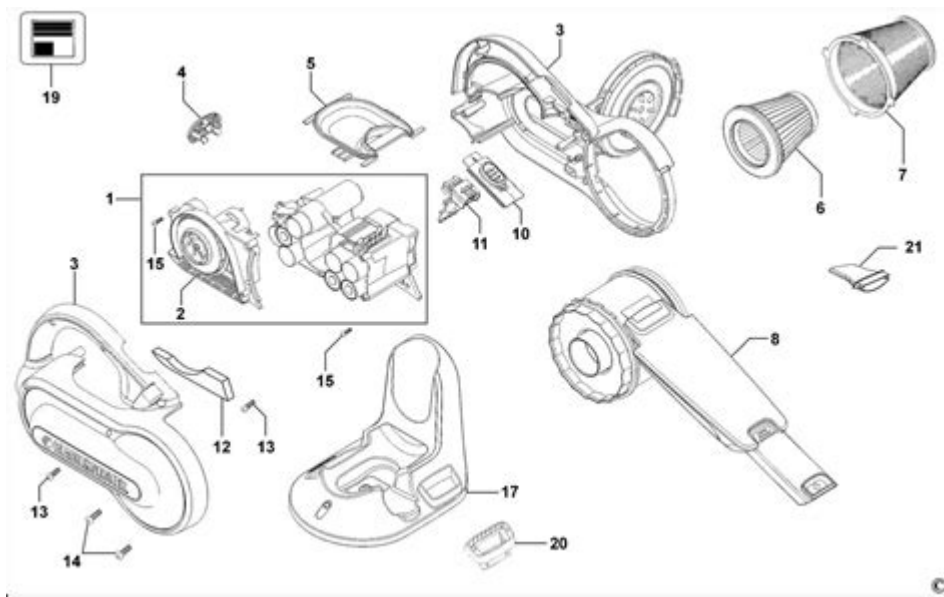


Black And Decker Lst140 Parts Diagram



Black and Decker LST140 Parts Diagram

The Black and Decker LST140 is a popular cordless string trimmer that combines power and versatility to make lawn maintenance a breeze. With its lightweight design and efficient battery, it's perfect for homeowners looking to maintain their gardens without the hassle of cords or gas. However, like all tools, the LST140 may require maintenance and replacement parts over time to ensure it continues to operate at peak performance. Understanding the parts diagram is essential for effective troubleshooting and repairs, as well as for routine maintenance. In this article, we will explore the components of the Black and Decker LST140, their functions, and how to identify when replacements may be necessary.

Overview of the Black and Decker LST140

The LST140 is part of Black and Decker's line of outdoor power tools, designed to provide ease of use and efficient trimming. This model features a 40V lithium-ion battery, providing ample power for a variety of tasks. Some of its key features include:

- Automatic feed spool for constant line advancement
- Adjustable height and handle for improved comfort
- Lightweight design for easy maneuverability
- Edge mode for converting the trimmer into a wheeled edger

The LST140 is a reliable tool for both novice and experienced users, ensuring that garden maintenance is manageable and efficient.

Parts of the Black and Decker LST140

Understanding the parts of the LST140 is crucial for effective maintenance and troubleshooting. The parts diagram serves as a visual guide, showcasing each component and its respective function. Below is a breakdown of some of the key parts found in the LST140.

1. Motor Assembly

The motor assembly is the powerhouse of the LST140. It drives the cutting mechanism and is essential for the trimmer's operation. Key components include:

- Electric Motor: Converts electrical energy into mechanical energy, enabling the cutting head to spin.
- Motor Housing: Protects the motor while allowing ventilation for cooling.

2. Cutting Head

The cutting head is where the actual trimming takes place. This part is crucial for effective weed and grass management.

- Spool: Holds the trimmer line and allows it to feed out automatically during operation.
- Trimmer Line: The cutting element that slices through grass and weeds.
- Cutting Guard: Protects the user from debris and prevents excessive wear on the trimmer line.

3. Battery Assembly

The LST140 operates on a lithium-ion battery, which provides power and convenience.

- Battery Pack: Supplies energy to the motor; it's crucial to keep this charged for optimal performance.
- Battery Release Button: Allows for easy removal of the battery for charging or replacement.

4. Shaft Assembly

The shaft connects the motor assembly to the cutting head, providing structural integrity.

- Shaft Tube: The main body of the trimmer that houses internal components.
- Adjustable Handle: Can be modified to suit the user's height, enhancing comfort during operation.

5. Safety Features

Safety is paramount when operating any power tool. The LST140 incorporates several safety features.

- Safety Switch: Prevents accidental starts; the trimmer will not operate unless this switch is engaged.
- Trigger: The user must press the trigger to activate the motor.

6. Additional Components

Other components that contribute to the overall functionality of the LST140 include:

- Wheels: Assist in transitioning the trimmer into edger mode.
- Supporting Bracket: Provides stability to the cutting head.

Understanding the Parts Diagram

A parts diagram is an invaluable tool when it comes to maintenance and repairs. It visually represents all the components of the LST140, allowing users to identify parts easily. Here's how to use the parts diagram effectively:

- Locate Parts: Each component is labeled, making it easy to find the part you need.
- Understand Assembly: The diagram shows how parts fit together, helping with reassembly after repairs.
- Identify Replacement Needs: If a part is damaged or worn out, the diagram can help you determine which part requires replacement.

Common Issues and Replacement Parts

Over time, certain parts of the LST140 may wear out or malfunction. Recognizing these issues early helps maintain the tool's performance. Below are some common problems and the parts often associated with them:

1. Worn Trimmer Line

Symptoms: The trimmer is not cutting effectively or the line frequently snaps.

Solution: Replace the spool with a new trimmer line. Make sure to use the correct gauge and type of line for optimal performance.

2. Battery Not Holding Charge

Symptoms: The trimmer runs for a significantly shorter time than expected.

Solution: Check the battery pack for wear or damage. If the battery fails to hold a charge after several attempts, it may need replacement.

3. Motor Overheating

Symptoms: The motor stops running, or the trimmer emits a burning smell.

Solution: Inspect the motor for debris buildup and clean it if necessary. If overheating persists, the motor may require replacement.

4. Broken Cutting Head

Symptoms: The cutting head does not rotate or makes unusual noises.

Solution: Examine the cutting head for any damage. If it is broken, replace the entire cutting head assembly.

Maintenance Tips for Longevity

To keep your Black and Decker LST140 performing well, regular maintenance is crucial. Here are some helpful tips:

- **Clean After Use:** Remove grass clippings and debris from the trimmer after each use to prevent clogging and rust.
- **Inspect Regularly:** Check for wear on the trimmer line and other components periodically.
- **Store Properly:** Keep the trimmer in a dry, cool place and avoid exposing it to extreme temperatures.
- **Charge Battery Correctly:** Always follow the manufacturer's guidelines for charging the battery to prolong its lifespan.

Conclusion

The Black and Decker LST140 is an efficient and user-friendly string trimmer that can simplify lawn care tasks. Familiarity with the parts diagram is essential for effective maintenance, repair, and replacement of components. Understanding the various parts, their functions, and common issues can empower users to keep their trimmer in excellent working condition for years to come. Regular maintenance and timely replacement of worn parts will ensure that the LST140 continues to deliver exceptional performance and reliability in your garden care efforts.

Frequently Asked Questions

What is the purpose of the Black and Decker LST140 parts diagram?

The parts diagram provides a visual representation of the various components of the Black and Decker LST140, helping users identify parts for maintenance, repair, or replacement.

Where can I find the Black and Decker LST140 parts diagram?

You can typically find the parts diagram on the official Black and Decker website, in the product manual, or through authorized retailers and repair websites.

How can I use the parts diagram to troubleshoot my Black and Decker LST140?

By examining the parts diagram, you can identify which components may be malfunctioning or missing, allowing you to troubleshoot issues more effectively.

Does the Black and Decker LST140 parts diagram include part numbers?

Yes, most parts diagrams include part numbers, which are essential for ordering the correct replacements.

Are there any common parts that need replacement on the Black and Decker LST140?

Commonly replaced parts for the LST140 include the cutting line, spool, and battery, which are often referenced in the parts diagram.

Can I download the Black and Decker LST140 parts diagram for offline use?

Yes, many official sites offer the option to download the parts diagram as a PDF for easy offline access.

What should I do if I can't find the parts diagram for my Black and Decker LST140?

If you can't find the parts diagram, consider contacting Black and Decker customer support or visiting authorized service centers for assistance.

Find other PDF article:

<https://soc.up.edu.ph/51-grid/pdf?docid=ELC17-1283&title=rigging-and-signal-person-training.pdf>

Black And Decker Lst140 Parts Diagram

BLACK+DECKER

HELP CENTER Welcome to the Black & Decker Help Center. Here, you can connect with us, engage with fellow customers in our community section, and find answers to FAQs. We're here to ...

Register your products | BLACK+DECKER

Looking to register your products? Begin by starting an account on blackanddecker.com. Having an account on is like having a superpower for your BLACK+DECKER® tools and gadgets. You can ...

BLACK+DECKER

☐ ☐ ☐ ...

[Home](#) | [BLACK+DECKER](#)

Official website of BLACK+DECKER™. See our power tools, garden tools, and more. Find information on products, where to buy, news, and customer service.

Workmate™ Portable Workbench, 425-To-550-Pound Capacity

Holding up to 550lbs, the BLACK+DECKER portable project center and vise is the perfect addition to your tool set. This workstation is multipurpose and helps you set up your project materials in ...

Car Vacuums | BLACK+DECKER

BLACK+DECKER dustbuster car vacuums are handy for cleaning in tight spaces. Lightweight and portable, these vacs will be a favorite car, truck, and vehicle accessory.

Accessories + Parts | BLACK+DECKER

Find all your needed accessories and spare parts for BLACK+DECKER® appliances, tools and more here. Enjoy sanding discs, string trimmer line, circular saw parts, sawzall attachments, blades, ...

Electric Leaf Blowers | BLACK+DECKER

Using a guide or tool to hang straight pictures ensures precision and alignment, preventing crooked displays and saving time on adjustments. Get organized with modular drawer units, available in ...

Account | BLACK+DECKER

Official website of BLACK+DECKER™. See our power tools, garden tools, and more. Find information on products, where to buy, news, and customer service.

Electric Lawn Mowers | BLACK+DECKER

For the lawn enthusiast or perfectionist, BLACK+DECKER® offers gas or electric lawnmowers. Browse through our collection for electric, corded mowers.

BLACK+DECKER

HELP CENTER Welcome to the Black & Decker Help Center. Here, you can connect with us, engage with fellow customers in our community section, and find answers to FAQs. We're ...

Register your products | BLACK+DECKER

Looking to register your products? Begin by starting an account on blackanddecker.com. Having an account on is like having a superpower for your BLACK+DECKER® tools ...

BLACK+DECKER

[illegible]

Home | BLACK+DECKER

Official website of BLACK+DECKER™. See our power tools, garden tools, and more. Find information on products, where to buy, news, and customer service.

Workmate™ Portable Workbench, 425-To-550-Pound Capacity | BLACK+DECKER

Holding up to 550lbs, the BLACK+DECKER portable project center and vise is the perfect addition to your tool set. This workstation is multipurpose and helps you set up your ...

Discover our detailed Black and Decker LST140 parts diagram to easily identify and order replacement parts. Learn more for a smooth repair process!

[Back to Home](#)