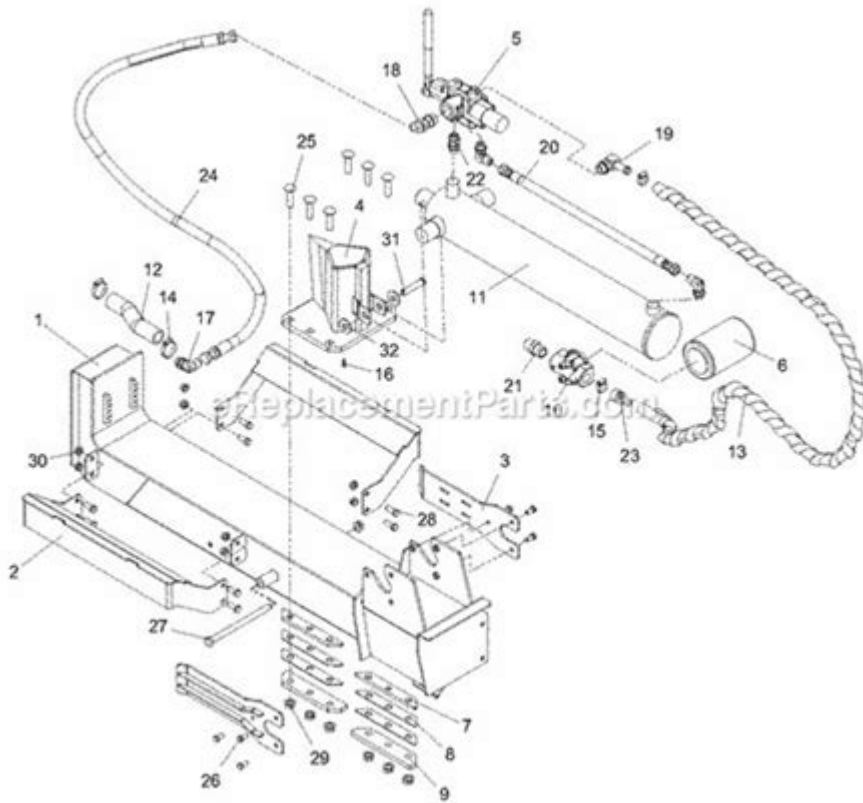


Black Diamond Log Splitter Parts Diagram



Black diamond log splitter parts diagram is an essential resource for anyone looking to understand their log splitter's components and how they work together to provide efficient wood splitting. Whether you're a seasoned woodworker or a novice DIY enthusiast, knowing your equipment inside and out can save you time and money on repairs and maintenance. In this article, we will delve into the various parts of a Black Diamond log splitter, offering a detailed diagram of its components, their functions, and tips for troubleshooting common issues.

Understanding the Black Diamond Log Splitter

Log splitters are powerful machines designed to make the task of splitting logs into manageable pieces much easier. The Black Diamond log splitter is known for its durability and efficiency. Understanding its parts is crucial for proper maintenance and operation.

Key Components of a Black Diamond Log Splitter

To fully grasp how a Black Diamond log splitter operates, it's important to familiarize yourself with its key components. Here's a breakdown of the main parts:

- **Engine:** The engine powers the entire log splitter. It can be gas-powered or electric, depending on the model.
- **Hydraulic System:** This system includes the hydraulic pump, hoses, and cylinders, enabling the splitter to generate the force necessary to split logs.
- **Log Cradle:** This is where the logs are placed before they are split. It helps hold the logs steady during the splitting process.
- **Wedge:** The metal wedge is the component that does the actual splitting. It comes in various shapes and sizes to accommodate different types of logs.
- **Frame:** The frame supports all the other components and provides stability to the machine.
- **Controls:** The control lever or buttons allow the operator to start, stop, and control the splitting action.
- **Tires:** For portable models, tires help in moving the splitter from one location to another.
- **Safety Features:** This includes guards and emergency shut-off switches to ensure safe operation.

Parts Diagram of a Black Diamond Log Splitter

A parts diagram is a visual representation that labels each component of the log splitter, making it easier to identify and understand their functions. Below is a description of how to interpret a typical Black Diamond log splitter parts diagram.

Reading the Parts Diagram

When looking at a parts diagram, you may encounter various symbols and numbers indicating specific parts. Here's how to make sense of it:

1. **Engine Section:** This area includes the engine specifications, model number, and any associated pulleys or belts.
2. **Hydraulic System:** Look for arrows indicating the flow of hydraulic fluid, as well as connections for hydraulic hoses and the pump.
3. **Log Cradle and Wedge:** These components are often highlighted to show how they are positioned relative to the engine and hydraulic system.

4. **Frame and Support Structures:** The frame is usually outlined to indicate its role in providing stability and support for the entire machine.
5. **Control Mechanisms:** This section will show the placement of the control lever and any safety features, emphasizing ease of access for the operator.

Common Issues and Troubleshooting Tips

Even with a clear understanding of the Black Diamond log splitter parts diagram, users may still encounter problems. Here are some common issues and troubleshooting tips:

Hydraulic Issues

- Problem: Log splitter is not applying enough pressure.
- Solution: Check for hydraulic fluid levels. Low fluid can lead to insufficient pressure. Additionally, inspect hoses for leaks or blockages.
- Problem: Leaking hydraulic fluid.
- Solution: Examine all hoses and connections for wear and tear. Replace any damaged parts immediately.

Engine Problems

- Problem: Engine won't start.
- Solution: Ensure there's fuel and that the ignition switch is in the "on" position. Check for any blown fuses or disconnected wires.
- Problem: Engine runs but lacks power.
- Solution: Clean or replace the air filter and spark plugs. Ensure that fuel is reaching the engine properly.

Wedge and Splitting Issues

- Problem: Wedge is getting stuck.
- Solution: Inspect the wedge for damage and clean any debris that may be causing it to bind. Ensure you are using the correct wedge for the type of logs being split.
- Problem: Inconsistent splitting performance.
- Solution: Check the log cradle alignment. Misalignment can cause uneven splitting. Also, avoid splitting

logs that are too large for the machine's capacity.

Maintenance Tips for Your Black Diamond Log Splitter

To ensure your Black Diamond log splitter remains in optimal condition, regular maintenance is crucial. Here are some maintenance tips:

- **Regular Inspection:** Periodically check all components for wear and tear, including the hydraulic system, engine, and wedge.
- **Fluid Changes:** Change the hydraulic fluid as recommended by the manufacturer to maintain performance.
- **Cleaning:** Keep the log splitter clean from sawdust and debris, especially around the engine and hydraulic system.
- **Sharpen Wedge:** Regularly sharpen the wedge to ensure efficient splitting and prevent damage to the machine.
- **Storage:** Store the splitter in a dry, sheltered place to protect it from the elements when not in use.

Conclusion

Understanding the **Black Diamond log splitter parts diagram** is vital for anyone looking to maintain and operate this powerful tool effectively. Familiarizing yourself with the components, how they work together, and how to troubleshoot common issues can help you maximize the efficiency and longevity of your log splitter. Regular maintenance and care will not only enhance performance but also ensure safety during operation. Whether you are splitting logs for firewood or crafting projects, a well-maintained log splitter can make your tasks easier and more enjoyable.

Frequently Asked Questions

What is a black diamond log splitter parts diagram used for?

A black diamond log splitter parts diagram is used to identify and understand the various components of the

log splitter, helping users with maintenance, repairs, and replacement of parts.

Where can I find a black diamond log splitter parts diagram?

You can find a black diamond log splitter parts diagram in the user manual, on the manufacturer's website, or through authorized dealers and repair shops.

What are the main components typically shown in a black diamond log splitter parts diagram?

Main components typically include the engine, hydraulic pump, cylinder, wedge, frame, and wheels, each labeled for easy identification.

How can I use the black diamond log splitter parts diagram to troubleshoot issues?

You can use the diagram to locate specific parts that may be malfunctioning, compare them to the symptoms you're experiencing, and identify which parts need repair or replacement.

Are there different versions of the black diamond log splitter parts diagram for different models?

Yes, there are different versions of the black diamond log splitter parts diagram for various models, so it's important to ensure you have the correct diagram for your specific model.

Can I print the black diamond log splitter parts diagram for easy reference?

Yes, many diagrams available online can be printed for easy reference during repairs or maintenance, making it convenient to keep it on hand while working on the splitter.

Find other PDF article:

<https://soc.up.edu.ph/67-blur/files?ID=NEm62-1575&title=word-problems-worksheets-4th-grade.pdf>

[Black Diamond Log Splitter Parts Diagram](#)

BLACK+DECKER

HELP CENTER Welcome to the Black & Decker Help Center. Here, you can connect with us, engage with fellow customers in our community section, and find answers to FAQs. We're ...

Register your products | BLACK+DECKER

Looking to register your products? Begin by starting an account on blackanddecker.com. Having an account on is like having a superpower for your BLACK+DECKER® tools and gadgets. You ...

BLACK+DECKER

...
...

Home | BLACK+DECKER

Official website of BLACK+DECKER™. See our power tools, garden tools, and more. Find information on products, where to buy, news, and customer service.

Workmate™ Portable Workbench, 425-To-550-Pound Capacity

Holding up to 550lbs, the BLACK+DECKER portable project center and vise is the perfect addition to your tool set. This workstation is multipurpose and helps you set up your project materials in ...

Car Vacuums | BLACK+DECKER

BLACK+DECKER dustbuster car vacuums are handy for cleaning in tight spaces. Lightweight and portable, these vacs will be a favorite car, truck, and vehicle accessory.

Accessories + Parts | BLACK+DECKER

Find all your needed accessories and spare parts for BLACK+DECKER® appliances, tools and more here. Enjoy sanding discs, string trimmer line, circular saw parts, sawzall attachments, ...

Electric Leaf Blowers | BLACK+DECKER

Using a guide or tool to hang straight pictures ensures precision and alignment, preventing crooked displays and saving time on adjustments. Get organized with modular drawer units, ...

Account | BLACK+DECKER

Official website of BLACK+DECKER™. See our power tools, garden tools, and more. Find information on products, where to buy, news, and customer service.

Electric Lawn Mowers | BLACK+DECKER

For the lawn enthusiast or perfectionist, BLACK+DECKER® offers gas or electric lawnmowers. Browse through our collection for electric, corded mowers.

PARTS INFORMATION - Champion Power Equipment

3919 120 14 20 21 2223 2024 25 2627 2829 3111

Black Diamond BDFNA27T BDFNA32T and BDFNA37T Op Manual

The hydraulic system of the log splitter requires careful inspection along with the mechanical parts. Be sure to replace frayed, kinked, cracked or otherwise damaged hydraulic hoses or hydraulic ...

27 TON LOG SPLITTER - Princess Auto

IMPORTANT SAFETY INFORMATION WARNING: Read and understand all instructions and safety information in this manual and on safety decals before assembling or operating the log splitter. ...

Parts Needed for Building a Log / Wood Splitter

Parts Needed for Building a Log / Wood Splitter The first part is a basic list of parts required to build your splitter whether you choose to go with a dedicated horizontal or a horizontal/vertical ...

Black Diamond BDH28T and BDH38T Op Manual

The hydraulic system of the log splitter requires careful inspection along with the mechanical parts. Be sure to replace frayed, kinked, cracked or otherwise damaged hydraulic hoses or hydraulic ...

Microsoft Word - 334842Edit.doc - 5-TON LOG SPLITTER

READ ALL INSTRUCTIONS BEFORE OPERATING. Before attempting to operate your new Log Splitter please read the instructions thoroughly. You will need these instructions for the safety warnings, ...

Harbor Freight Tools In-Stock Replacement Parts Listing - PDF4PRO

Harbor Freight sells many tools and products that look similar, but are different. To ensure you are purchasing the correct parts or part kits, you will need to identify the product's unique Item ...

Blue Bloods Higher Education Cast (2024) - Viralstyle

Find Blue Bloods Higher Education Cast : black diamond log splitter parts diagram black authors for black history month

Parts Drawing & Parts List - images.homedepot-static.com

Parts Drawing & Parts List

2012-05-08 THCS-65 IM 2012 - The Handy

Unplug from the electrical supply when not in use, before adjusting, changing parts, cleaning or working on the log splitter. All servicing and repairs are recommended to be undertaken by an ...

27 Ton LOG SPLITTER - Champion Power Equipment

When loading a ram-type log splitter, place your hands on the sides of the log, not the ends. Never place your hands or any part of your body between a log and any part of the log splitter. On ram ...

Log Splitters & Wood Chippers | North American Built

GENERAL PARTS LIST Please indicate the log splitter model when ordering parts. 1 - 2" ball coupler 2 - coupler latch assembly 3 safety chains & hooks 4 - Wire harness assembly 5 - front stop ...

SPLITTER

The hydraulic system of your log splitter requires careful inspection, along with the mechanical parts. Be sure to replace frayed, kinked, or otherwise damaged hydraulic components.

PARTS INFORMATION - Champion Power Equipment

LOG SPLITTER PARTS LIST ... LOG SPLITTER PARTS LIST ... eENGINE PARTS DIAGRAM 105 106

Microsoft Word - LSP2001 YTL 20T Log Splitter Manual Eng 888 ...

ONLY operate the log splitter from the operator zone as shown in the diagram. Operating the log splitter in another location can result in serious injury or death.

PARTS INFORMATION - Champion Power Equipment

SeRIAL NUMBeR RANge: ALL To order replacement parts please visit:

PARTS INFORMATION - Champion Power Equipment

LOG SPLITTER PARTS LIST ... LOG SPLITTER PARTS LIST ... eENGINE PARTS DIAGRAM 108 109 110 112 111 106 107 113 114 112 111

MODEL NO.: WD27T / 32T / 37T Owner's Manu - Power ...

Step 3: Use scissors or a knife to cut and remove the straps securing the parts to the beam or tank assembly, including tongue assembly and log tray assemblies, then put aside these parts for ...

PARTS INFORMATION - Champion Power Equipment

LOG SPLITTeR PARTS LIST ... LOG SPLITTeR PARTS LIST ... eNGINe PARTS dIAGRAM 108 109 110 112 111 106 107 113 114 112 111

OREGON SPLITTER UNITS S40100600 SPLITTER, OREGON® 6 TO
PTO Pin, 3/4" x 3-7/16"

PARTS INFORMATION - Champion Power Equipment

SeRIAl NuMBeR RANge: NF2302050000+ To order replacement parts please visit:

25 Ton LOG SPLITTER - Champion Power Equipment

If a log gets stuck, embedded or will not split completely, push the control handle in the reverse direction and allow the splitter to strip the log from the wedge.

Avogadros Number And The Mole Worksheet - status.viralstyle.com

Throughout this critique, we will delve to the book is central themes, evaluate its unique writing style, and assess its overall influence on its readership. black diamond log splitter parts diagram ...

3-POINT HITCH VERTICAL/HORIZONTAL LOG SPLITTERS - black-diamond...

The hydraulic system of the log splitter requires careful inspection along with the mechanical parts. Be sure to replace frayed, kinked, cracked or otherwise damaged hydraulic hoses or hydraulic ...

PARTS INFORMATION - Champion Power Equipment

SERIAL NUMBER RANGE: ALL To order replacement parts please visit:

Can I Open A Business Account As A Sole Proprietor [PDF]

Immerse yourself in heartwarming tales of love and emotion with is touching creation, Tender Moments: Can I Open A Business Account As A Sole Proprietor . This emotionally charged ebook, ...

Log Splitter Owner Manual - Skid Pro Attachments

Log Splitter Assembly - Detailed Parts Diagram A Skid Pro Log Splitter Manual

PARTS INFORMATION - Champion Power Equipment

SeRIAl NuMBeR RANge: All To order replacement parts please visit:

PARTS INFORMATION

LOG SPLITTeR PARTS LIST ... LOG SPLITTeR PARTS LIST ... eNGINe PARTS dIAGRAM 108 109 110 112 111 106 107 113 114 112 111

PARTS INFORMATION - Champion Power Equipment

SeRIAl NuMBeR RANge: All For Customer Assistance Please Call: 1.866.523.5218

Breville Coffee Maker With Grinder Manual (PDF)

Find Breville Coffee Maker With Grinder Manual : black diamond log splitter parts diagram

PARTS INFORMATION - Champion Power Equipment

3919 120 14 20 21 2223 2024 25 2627 2829 31 11 32

Hydraulic Log Splitter - Titan Pro

SAFETY Safety Warnings & Instructions **UNDERSTAND YOUR LOG SPLITTER** Read and understand the owner's manual and labels affixed to the log splitter. Learn its application and limitations as ...

PARTS INFORMATION - Champion Power Equipment

13 96 97 98 99 100 101 83 1 17 16 4 18 30

Black Diamond BDKL27T & BDKL32T Op Manual

The hydraulic system of the log splitter requires careful inspection along with the mechanical parts. Be sure to replace frayed, kinked, cracked or otherwise damaged hydraulic hoses or hydraulic ...

I&O BHVH2212-2212FC-2612 09-12.qxp - gnedi.com

Initial Start-Up Instructions Read all assembly, operating, and safety instructions. Complete and return the warranty card to register your log splitter.

Split-Fire Log Splitters - Parts List & Diagram

285633 Airport Rd. Norwich, ON. N0J 1P0 Ph. (519) 468-3647 Fax (877) 256-9131 sales@split-fire.com

30 TON, 35 TON & 40 TON VERTICAL/HORIZONTAL LOG SPLITTER

DO NOT wear loose clothing or jewelry that can be caught by moving parts of the log splitter Keep clothing and hair away from all moving parts when operating this log splitter

SPLITTER

Both ends of the log should be cut as squarely as possible to prevent the log from sliding out of the splitter during operation. Log length should be kept to 25 1/2" or less.

MODEL NUMBERS - Log Splitter Plans

WARNING: Read and thoroughly understand all instructions in this manual and on safety decals before assembling or operating this log splitter. Failure to do so may cause serious injury or ...

ENERGY

The log The splitter log splitter valve valve is a four-way is a four-way hydraulic hydraulic directional directional control valve designed designed to operate a control valve two-way hy-draulic circuit ...

PARTS INFORMATION - Champion Power Equipment

LOG SPLITTER PARTS LIST ... LOG SPLITTER PARTS LIST ... eNGINE PARTS dIAGRAM 105 106

20 Ton LOG SPLITTER - Champion Power Equipment

When loading a ram-type log splitter, place your hands on the sides of the log, not the ends. Never place your hands or any part of your body between a log and any part of the log splitter. On ram ...

Forest king 22 ton log splitter parts list diagram pdf

Home > Speeco SplitMaster 22 Ton Log Splitter Parts Diagram 40123300, 401233CA ACCESSORIES / ATTACHMENTS SpeeCo's revolutionary new 4-Way Splitting Wedge slides over the existing ...

LOG SPLITTERS - User Manual Search Engine

The hydraulic system of your log splitter requires careful inspection along with the mechanical parts. Be sure to replace frayed, kinked, cracked or otherwise damaged hydraulic hose and ...

Operation Manual - Black-Diamond

Jul 1, 2021 · WARRANTY We take pride in producing a high quality, durable product. This Black Diamond™ product carries a limited five (5) year warranty against defects in workmanship and ...

PARTS INFORMATION - Champion Power Equipment

3 lOg SPliTTeR PARTS DIAgRAM 1 2 3 4 5 6 7 8 9 10 11 12 13 13 14 15 16 17 18 19 20 21 22 17 22
26 21 29 25 24 23 77 76 3 62 28 27 30 3 2 57 34 33 3 32 55 50 68 51 51 53 54 46 45 47 42 41 43 ...

LOG SPLITTER

When loading a ram-type log splitter, place your hands on the sides of the log, not the ends. Never place your hands or any part of your body between a log and any part of the log splitter.

Explore our detailed black diamond log splitter parts diagram to identify components and enhance your splitter performance. Learn more for expert insights!

[Back to Home](#)