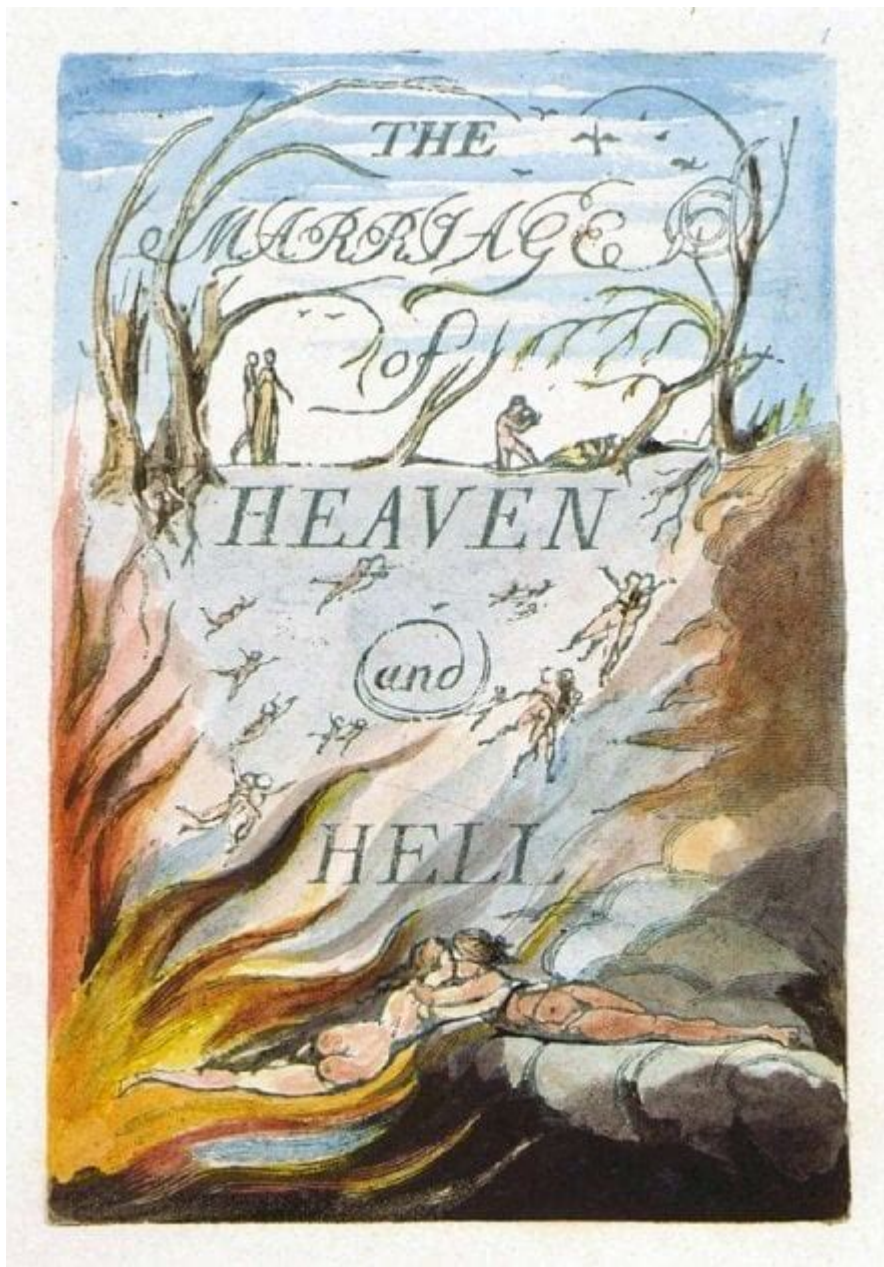


Blake The Marriage Of Heaven And Hell



Understanding Blake's "The Marriage of Heaven and Hell"

Blake's "The Marriage of Heaven and Hell" is a seminal work that encapsulates the complexity of William Blake's philosophy regarding the dualities of existence. Written between 1790 and 1793, this text is not merely a poetic exploration but a profound commentary on the nature of good and evil, the relationship between the human spirit and the divine, and the transformative power of imagination.

Blake, an English poet, painter, and printmaker, is often regarded as one of the key figures of the Romantic Age. His works are characterized by their deep symbolism, visionary quality, and merging of art with spirituality. "The Marriage of Heaven and Hell" stands out as a pivotal piece that challenges conventional religious and philosophical beliefs of his time.

The Context of "The Marriage of Heaven and Hell"

To appreciate Blake's work fully, it is essential to understand the socio-religious context in which he wrote. The late 18th century was a time of significant change in Europe, marked by the Enlightenment and the Industrial Revolution. These movements fostered new ways of thinking about humanity, morality, and the relationship between man and the divine.

Blake was critical of the organized religion of his day, which he viewed as restrictive and hypocritical. He believed that conventional morality often stifled individual creativity and spiritual awakening. This work can be seen as a response to the rigid dichotomies that characterized both religious and secular thought.

Key Themes in "The Marriage of Heaven and Hell"

Blake's text is rich with themes that invite deep reflection. Some of the most significant include:

- **Duality and Unity:** Blake argues that the separation of good and evil is a false dichotomy. He suggests that true understanding arises from the synthesis of opposites.
- **Imagination:** For Blake, imagination is a divine faculty that allows individuals to transcend the limitations of ordinary perception. It is through imagination that one can access deeper truths.
- **Rebellion:** The work embraces the idea of rebellion against oppressive structures, whether they be societal norms or religious dogma. Blake advocates for personal freedom and self-expression.
- **The Nature of Desire:** Desire is presented as a fundamental aspect of human experience, essential for growth and transformation. Blake challenges the notion that desire is inherently sinful.

The Structure of the Work

"The Marriage of Heaven and Hell" is structured as a series of prose poems interspersed with poetic verses. This unique format allows Blake to convey his ideas in a dynamic and engaging manner. The text can be divided into several key sections, each serving a distinct purpose:

1. Proverbs of Hell

One of the most famous sections of the work, the "Proverbs of Hell," presents a series of aphorisms that encapsulate Blake's revolutionary ideas. These proverbs challenge traditional moral values and encourage readers to reconsider their beliefs. For example, Blake writes:

- "The road of excess leads to the palace of wisdom."
- "Without contraries is no progression."

These statements illustrate Blake's belief in the necessity of conflict and contradiction in the pursuit of truth.

2. The Visionary Experience

Blake often employs visionary experiences to convey profound spiritual truths. In "The Marriage of Heaven and Hell," he describes a journey through the realms of heaven and hell, suggesting that both are integral aspects of human existence. This journey serves as a metaphor for the inner struggles we face as we navigate our desires, fears, and aspirations.

3. The Marriage Itself

The central motif of the "marriage" symbolizes the union of opposing forces. This concept is not limited to good and evil but extends to various dualities, such as reason and imagination, body and spirit, and male and female. Blake posits that the reconciliation of these opposites is essential for achieving spiritual enlightenment and personal fulfillment.

Blake's Philosophical Influences

Blake's ideas were influenced by various philosophical and religious traditions. Understanding these influences can enhance one's appreciation of his work:

1. **Gnosticism:** Gnostic beliefs emphasize the importance of knowledge and personal experience over dogma. Blake's emphasis on individual vision and understanding reflects Gnostic themes.
2. **Romanticism:** As a precursor to the Romantic movement, Blake's focus on emotion, nature, and the individual aligns with Romantic ideals. He sought to elevate the imagination as a means of accessing truth.
3. **Eastern Philosophies:** Elements of Eastern thought, particularly concepts of duality and unity, can also be found in Blake's work. His understanding of the interconnectedness of all things resonates with Hindu and Buddhist philosophies.

The Impact of "The Marriage of Heaven and Hell"

Blake's "The Marriage of Heaven and Hell" had a profound impact on literature, art, and philosophy. Its innovative approach to themes of duality and the human experience has inspired countless artists and writers.

Literary Influence

Many authors and poets have drawn inspiration from Blake's work. His ideas about imagination and the necessity of embracing opposites are echoed in the writings of later Romantic poets such as Percy Bysshe Shelley and John Keats. Additionally, modern writers and thinkers continue to engage with Blake's themes, particularly in the realms of psychology and spirituality.

Artistic Influence

Blake's unique style, characterized by vivid imagery and symbolic content, has left a lasting mark on visual art. His own illustrations for "The Marriage of Heaven and Hell" showcase his talent as a visual artist and serve to enhance the textual experience. The fusion of text and image in Blake's work has influenced various art movements, including Symbolism and Surrealism.

Philosophical Influence

Philosophers interested in the nature of good and evil, as well as those exploring the limits of rational thought, have found Blake's ideas compelling. His rejection of binary oppositions and advocacy for a more

nuanced understanding of morality resonate with contemporary philosophical discourse.

Conclusion

William Blake's "The Marriage of Heaven and Hell" is a rich and complex work that challenges conventional notions of morality, spirituality, and the human experience. Through its exploration of duality and the transformative power of imagination, Blake invites readers to engage with the contradictions inherent in existence.

In a world often defined by rigid categorizations of good and evil, Blake's call for a synthesis of opposites remains relevant today. His work encourages introspection, creativity, and a deeper understanding of the self and the universe. As we navigate our own journeys through the realms of heaven and hell, Blake's insights serve as a guiding light, illuminating the path toward personal and spiritual enlightenment.

Frequently Asked Questions

What is the central theme of William Blake's 'The Marriage of Heaven and Hell'?

The central theme of 'The Marriage of Heaven and Hell' is the reconciliation of opposites, particularly the integration of good and evil, which Blake posits as necessary for spiritual enlightenment and creativity.

How does Blake use the concept of contraries in 'The Marriage of Heaven and Hell'?

Blake uses the concept of contraries to illustrate that opposing forces, such as heaven and hell, are interdependent and essential to each other, suggesting that one cannot exist without the other and that understanding requires embracing both sides.

What role do the 'Proverbs of Hell' play in Blake's work?

The 'Proverbs of Hell' serve as aphoristic statements that challenge conventional morality and societal norms, promoting a more nuanced understanding of human experience and encouraging readers to question established beliefs.

In what ways does Blake's 'The Marriage of Heaven and Hell' reflect his views on the nature of the human soul?

Blake's work reflects his belief that the human soul is a complex interplay of desires and impulses, embodying both divine and demonic elements, which must be embraced to achieve true understanding and personal liberation.

How has 'The Marriage of Heaven and Hell' influenced modern interpretations of duality in literature and art?

Blake's exploration of duality in 'The Marriage of Heaven and Hell' has influenced modern interpretations by encouraging artists and writers to explore themes of conflict and harmony, complexity in human nature, and the blending of contrasting ideas within their works.

Find other PDF article:

<https://soc.up.edu.ph/40-trend/files?trackid=tnR20-6519&title=matrix-and-finite-element-analysis-of-structures-by-mukhopadhyay.pdf>

Blake The Marriage Of Heaven And Hell

Troubleshoot YouTube TV account login issues - Google Help

Troubleshoot YouTube TV account login issues If you're having trouble signing up or signing in to your YouTube TV account, you may be signed in to a Brand Account.

YouTube TV Help - Google Help

Official YouTube TV Help Center where you can find tips and tutorials on using YouTube TV and other answers to frequently asked questions.

Update billing and payments for YouTube TV

As a YouTube TV member, you'll automatically be charged at the start of each new billing cycle until you cancel. Your payment gives you access to YouTube TV for the next month.

Sign up for YouTube TV - Computer - YouTube TV Help - Google ...

YouTube TV is a paid membership that offers live TV from major networks, unlimited DVR space, and popular cable and premium networks. This article will help you sign up and customize a YouTube TV Base Plan.

Watch YouTube TV on your TV - YouTube TV Help - Google Help

To watch on select TV devices, you can download our TV app, watch by opening YouTube TV inside the YouTube app on your TV, or stream YouTube TV from your mobile device or computer using a supported device below.

Watch YouTube TV on supported devices

Watch YouTube TV on supported devices You can watch YouTube TV on a computer, smart TV, streaming device, or mobile device, including certain phones and tablets.

Use YouTube TV to sign in to network sites

With TV Everywhere, you can use your YouTube TV sign-in info to stream TV from some networks' websites. Streaming from these providers' websites doesn't count as one of your YouTube TV streams. Use T

Cancel or pause your YouTube TV membership

Cancel or pause your YouTube TV membership You can cancel or pause your YouTube TV membership at any time. When you cancel or pause your membership, you'll still have access to YouTube TV until the end of your payment period. Canceling YouTube TV does not immediately remove your access to the service, even during the free trial period.

Sign in to the YouTube app on your smart TV or game console

Learn how to sign out or remove an account from the YouTube app on your smart TV or game console. If you're a YouTube TV member looking to watch YouTube TV on your television, check out the YouTube TV Help Center for more info.

Troubleshoot YouTube TV membership billing or access issues

If your monthly payment for YouTube TV is declined, we'll let you know via email so that you can restore your membership. After getting this email: You'll have 1 day to fix any payment issues before losing access to your YouTube TV benefits, followed by a 30-day pause on your account.

Netflix - Watch TV Shows Online, Watch Movies Online

What is Netflix? Netflix is a streaming service that offers a wide variety of award-winning TV shows, movies, anime, documentaries, and more on thousands of internet-connected devices.

About Netflix - New on Netflix

Get the latest on what shows, movies, specials and games are coming soon to Netflix, including titles, release dates, descriptions, cast and how to watch on Netflix.

How to download the Netflix app | Netflix Help Center

A step-by-step guide to downloading the Netflix app on your phone, tablet, or computer.

What's New on Netflix - List of Latest Series & Movies

Jul 1, 2025 · The complete list of new series, movies, stand-up specials added to Netflix with trailers and reviews plus weekly recaps of all the new releases.

Netflix - Apps on Google Play

Netflix is the leading subscription service for watching TV episodes and movies.

Netflix

Watch Netflix movies & TV shows online or stream right to your smart TV, game console, PC, Mac, mobile, tablet and more.

Netflix Help Center

Learn how to sign up and use Netflix. Get help with account issues, troubleshooting and questions.

How to sign up for Netflix | Netflix Help Center

Some older TVs and TV streaming devices don't support signing up for Netflix directly on the device. To sign up, get the Netflix app on your Android phone or tablet, iPhone or iPad, or visit ...

About Netflix - Homepage

Whatever you're into, whatever your mood, Netflix delivers the next series, films and games you'll obsess over. This is entertainment the world never sees coming - and can't stop talking about.

Plans and Pricing | Netflix Help Center

Discover the different streaming plans Netflix offers and how much Netflix costs.

Explore William Blake's "The Marriage of Heaven and Hell

[Back to Home](#)