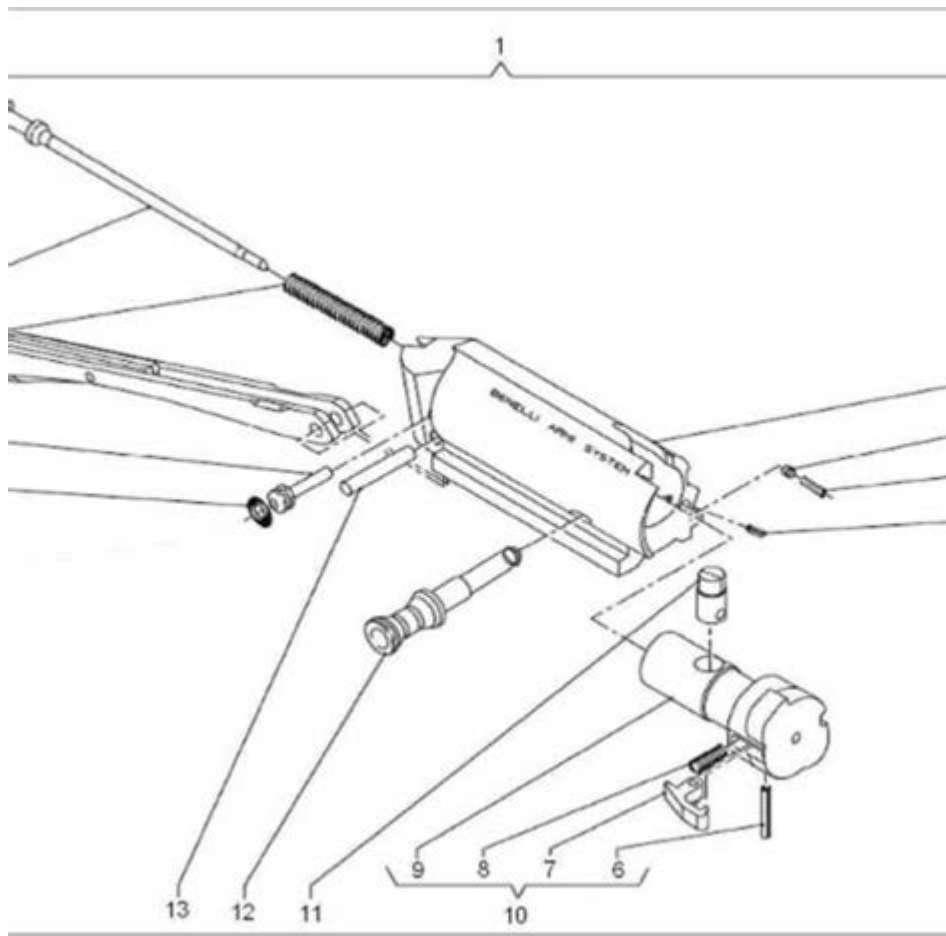


# Benelli Super Black Eagle Owners Manual



Benelli Super Black Eagle Owners Manual: The Benelli Super Black Eagle (SBE) is one of the most celebrated semi-automatic shotguns in the world, renowned for its reliability, performance, and versatility. Having an understanding of the owner's manual is crucial for any gun owner, as it not only outlines the operational aspects of the firearm but also ensures safety and proper maintenance. This article delves into the various sections and key features of the Benelli Super Black Eagle Owners Manual, guiding both new and seasoned owners through the essentials of their shotgun.

## Introduction to the Benelli Super Black Eagle

The Benelli Super Black Eagle is a gas-operated, semi-automatic shotgun that has gained popularity among hunters and sport shooters alike. Its design allows for a wide variety of ammunition types, making it suitable for various shooting applications, from waterfowl hunting to upland game. The owners manual serves as a comprehensive guide to ensure users can operate and maintain their shotguns safely and effectively.

# Safety Guidelines

Safety is paramount when handling any firearm, and the Benelli Super Black Eagle is no exception. The owners manual provides a detailed section dedicated to safety practices, which includes:

## General Safety Rules

1. Treat every firearm as if it is loaded.
2. Never point the firearm at anything you do not intend to shoot.
3. Keep your finger off the trigger until you are ready to shoot.
4. Be sure of your target and what is beyond it.
5. Store firearms securely and out of reach of children.

## Specific Safety Precautions for the SBE

- Always use the correct ammunition as specified by the manufacturer.
- Ensure the shotgun is unloaded when cleaning or performing maintenance.
- Use protective eyewear and hearing protection when shooting.
- Regularly check for any signs of wear or damage to the firearm.

## Understanding Your Shotgun

The owners manual breaks down the components of the Benelli Super Black Eagle, providing users with a clear understanding of their firearm.

## Key Components

- Barrel: The length and design of the barrel can impact shooting performance.
- Receiver: This is the heart of the shotgun, housing the action and trigger mechanism.
- Stock: The material and design influence comfort and handling.
- Choke System: Understanding different choke options can enhance shooting accuracy.

## Specifications of the Benelli SBE

- Gauge: Typically available in 12-gauge but also offered in 20-gauge.
- Action Type: Semi-automatic, utilizing a gas-operated system.
- Capacity: Standard magazine capacity is 3+1 (depends on local regulations).
- Weight: Varies by model, typically around 7.5 pounds.

# Operating the Benelli Super Black Eagle

Proper operation of the SBE is essential for safe and effective shooting. The owners manual provides detailed instructions on loading, unloading, and firing the shotgun.

## Loading the Shotgun

1. Ensure the shotgun is pointed in a safe direction.
2. Open the action by pressing the bolt release button.
3. Insert shells into the magazine tube, ensuring they are seated properly.
4. Close the action by pulling the bolt handle fully to the rear and releasing it.

## Unloading the Shotgun

- To unload, point the shotgun in a safe direction and open the action.
- Remove any rounds from the chamber and magazine tube.
- Visually inspect the chamber to ensure it is empty.

## Shooting Techniques

- Always maintain a stable shooting stance.
- Use both hands to grip the shotgun firmly.
- Align your sights with the target and ensure a smooth trigger pull.

## Cleaning and Maintenance

Regular maintenance is crucial for the longevity and performance of the Benelli Super Black Eagle. The owners manual outlines specific cleaning and care procedures.

## Cleaning Supplies Needed

- Cleaning rod and patches
- Bore brush
- Gun cleaning solvent
- Lubricating oil
- Soft cloths for wiping down surfaces

## **Cleaning Steps**

1. Disassemble the Shotgun: Follow the manual's instructions to safely disassemble the SBE.
2. Clean the Barrel: Use a bore brush and solvent to clean the interior of the barrel. Run patches through until they come out clean.
3. Clean External Surfaces: Wipe down the receiver, stock, and other external components with a soft cloth.
4. Lubricate: Apply a light coat of oil to moving parts as specified in the manual.
5. Reassemble: Carefully reassemble the shotgun, ensuring all parts are correctly aligned.

## **Troubleshooting Common Issues**

Even the most reliable firearms can experience issues. The owners manual provides a troubleshooting guide for common problems.

### **Common Problems and Solutions**

1. Failure to Fire:
  - Ensure the safety is disengaged.
  - Check the ammunition for proper load and condition.
2. Jamming:
  - Inspect for any obstructions in the chamber or feed mechanism.
  - Ensure the shotgun is clean and well-lubricated.
3. Inconsistent Ejection:
  - Check the ejector for wear and replace if necessary.
  - Ensure the shotgun is clean and free of debris.

## **Warranty and Customer Support**

The Benelli Super Black Eagle comes with a manufacturer warranty that covers defects in material and workmanship. The owners manual outlines the warranty details, including the duration and how to file a claim.

### **Contacting Customer Support**

If you encounter issues that cannot be resolved through troubleshooting, the manual provides contact information for Benelli's customer support team. This typically includes:

- Phone number for direct assistance
- Email address for inquiries

- Website for accessing additional resources and support documentation

## **Conclusion**

In conclusion, the Benelli Super Black Eagle Owners Manual is an indispensable resource for any owner of this high-performance shotgun. Understanding the safety guidelines, operational procedures, maintenance requirements, and troubleshooting techniques outlined in the manual can significantly enhance the shooting experience. Proper care and knowledge not only ensure the longevity of the firearm but also guarantee a safe and enjoyable shooting experience. Whether you are a seasoned hunter or a new enthusiast, familiarizing yourself with this manual is the first step towards mastering the Benelli Super Black Eagle.

## **Frequently Asked Questions**

### **Where can I find the Benelli Super Black Eagle owner's manual?**

You can find the owner's manual for the Benelli Super Black Eagle on the official Benelli website under the 'Support' or 'Downloads' section, or you can contact your local Benelli dealer for a physical copy.

### **What are the key maintenance tips included in the Benelli Super Black Eagle owner's manual?**

The owner's manual includes key maintenance tips such as regular cleaning after use, proper lubrication of moving parts, checking the choke and ensuring that the gas system is functioning correctly.

### **Does the Benelli Super Black Eagle owner's manual provide troubleshooting guidance?**

Yes, the owner's manual includes a troubleshooting section that addresses common issues such as failure to cycle, feeding problems, and misfires, along with recommended solutions.

### **Are there any specific safety guidelines in the Benelli Super Black Eagle owner's manual?**

Absolutely! The owner's manual outlines important safety guidelines such as always treating the firearm as if it is loaded, keeping the muzzle pointed in a safe direction, and using the appropriate ammunition.

### **How often should I refer to the Benelli Super Black Eagle**

## owner's manual?

It is recommended to refer to the owner's manual regularly, especially before and after hunting seasons, to ensure you are following proper maintenance procedures and safety protocols.

Find other PDF article:

<https://soc.up.edu.ph/23-write/files?ID=DPV93-9904&title=fraction-worksheets-7th-grade.pdf>

## **Benelli Super Black Eagle Owners Manual**

### **Benelli Club Umbria - Benelli Forum Italia**

May 19, 2021 · 1000 Curve Umbria - 31/10/2020 Vivi\_Elle posted a topic in Benelli Club Umbria's Tour & Incontri

#### *Benelli Forum Italia*

Jun 29, 2012 · Benelli Tornado Naked T 125 Motore Elettronica Ciclistica Accessori Agilissima e compatta, frizzante e friendly 473 posts By Scatenello, August 4, 2023

### **Primi 300km ( RODAGGIO ) - Motore - Benelli Forum Italia**

Jul 16, 2022 · Ciao a tutti ho preso la piccola Leoncino una settimana fa ed ho percorso i primi 300km. Ovviamente sto rispettando le regole base del rodaggio, cerco di tenerla intorno ai 6000 ...

#### *Regolamento del Forum - Regolamento - Benelli Forum Italia*

Jun 17, 2012 · Obbligatorio per tutti : Regole del Forum - da leggere prima di iniziare ad utilizzare il forum!Benelliforum.it è un gruppo privato indipendente da BENELLI Q.J. e da qualsiasi altra ...

### **Discussioni - Benelli Forum Italia**

Mar 13, 2023 · Forum dedicato a qualsiasi tipo di contenuto. ATTENZIONE: è al fine di fornire un piacevole e pratico utilizzo della sezione a tutti, avere l'accortezza di usare la funzione ricerca del ...

#### *Piemonte - Benelli Forum Italia*

Mar 15, 2023 · Per rendere più semplice il ritrovarsi tra Benellisti del Piemonte

#### *I Benellisti Piemontesi! - Discussioni - Benelli Forum Italia*

Mar 7, 2020 · Ciao a tutti, bikers!! Ormai la stagione è iniziata ed a breve, virus vari che girano ultimamente permettendo, sarà ora del primo motogiro dove finalmente poterci ritrovare e ...

#### Contagiri poco affidabile - Elettronica - Benelli Forum Italia

Jul 16, 2022 · Ciao per quanto riguarda l'elettronica per ora nulla da dire se non per il contagiri, ho notato che spesso le tacche salgono in modo strano e non sempre seguono l'effettivo girare del ...

### **Media Uploader - Benelli Forum Italia**

Benelli TNT 125 E4 Manuale Officina (ENGLISH) Filesize - 22.29 MB Uploaded by Vivi\_Elle

### **Le Benelli - Benelli Forum Italia**

May 28, 2024 · Benelli Tornado Naked T 125 Motore Elettronica Ciclistica Accessori Agilissima e

compatta, frizzante e friendly 473 posts By Scatenello, August 4, 2023

### **Benelli Club Umbria - Benelli Forum Italia**

May 19, 2021 · 1000 Curve Umbria - 31/10/2020 Vivi\_Elle posted a topic in Benelli Club Umbria's Tour & Incontri

### **Benelli Forum Italia**

Jun 29, 2012 · Benelli Tornado Naked T 125 Motore Elettronica Ciclistica Accessori Agilissima e compatta, frizzante e friendly 473 posts By Scatenello, August 4, 2023

### *Primi 300km ( RODAGGIO ) - Motore - Benelli Forum Italia*

Jul 16, 2022 · Ciao a tutti ho preso la piccola Leoncino una settimana fa ed ho percorso i primi 300km. Ovviamente sto rispettando le regole base del rodaggio, cerco di tenerla intorno ai 6000 ...

### Regolamento del Forum - Regolamento - Benelli Forum Italia

Jun 17, 2012 · Obbligatorio per tutti : Regole del Forum - da leggere prima di iniziare ad utilizzare il forum!Benelliforum.it è un gruppo privato indipendente da BENELLI Q.J. e da qualsiasi altra ...

### *Discussioni - Benelli Forum Italia*

Mar 13, 2023 · Forum dedicato a qualsiasi tipo di contenuto. ATTENZIONE: è al fine di fornire un piacevole e pratico utilizzo della sezione a tutti, avere l'accortezza di usare la funzione ricerca del ...

### **Piemonte - Benelli Forum Italia**

Mar 15, 2023 · Per rendere più semplice il ritrovarsi tra Benellisti del Piemonte

### **I Benellisti Piemontesi! - Discussioni - Benelli Forum Italia**

Mar 7, 2020 · Ciao a tutti, bikers!! Ormai la stagione è iniziata ed a breve, virus vari che girano ultimamente permettendo, sarà ora del primo motogiro dove finalmente poterci ritrovare e ...

### **Contagiri poco affidabile - Elettronica - Benelli Forum Italia**

Jul 16, 2022 · Ciao per quanto riguarda l'elettronica per ora nulla da dire se non per il contagiri, ho notato che spesso le tacche salgono in modo strano e non sempre seguono l'effettivo girare del ...

### **Media Uploader - Benelli Forum Italia**

Benelli TNT 125 E4 Manuale Officina (ENGLISH) Filesize - 22.29 MB Uploaded by Vivi\_Elle

### **Le Benelli - Benelli Forum Italia**

May 28, 2024 · Benelli Tornado Naked T 125 Motore Elettronica Ciclistica Accessori Agilissima e compatta, frizzante e friendly 473 posts By Scatenello, August 4, 2023

Unlock the full potential of your firearm with the Benelli Super Black Eagle owners manual. Discover how to maintain and operate your shotgun effectively. Learn more!

[Back to Home](#)