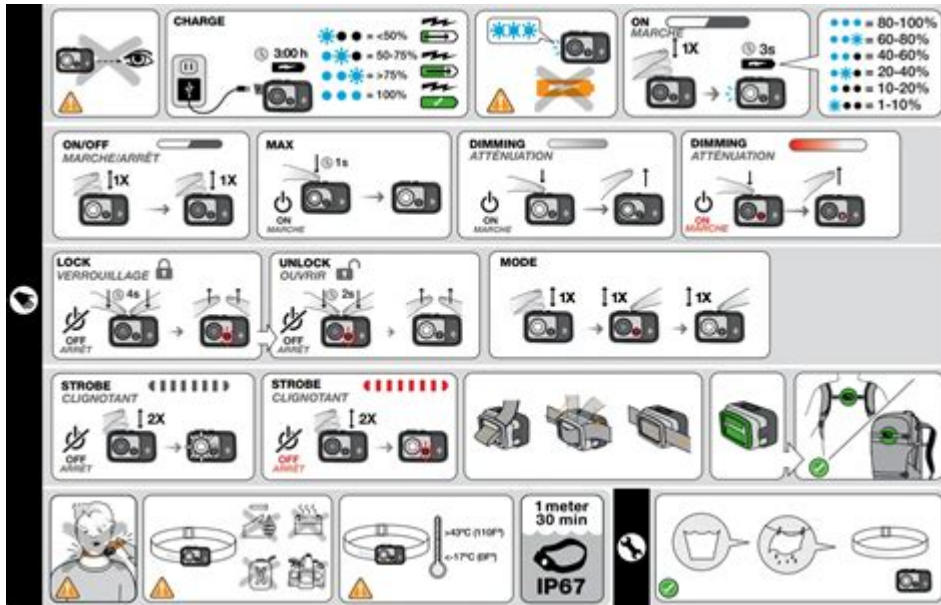


Black Diamond Cosmo Headlamp Manual



Black Diamond Cosmo Headlamp Manual

The Black Diamond Cosmo headlamp is a versatile lighting tool designed for outdoor enthusiasts, adventurers, and anyone who needs reliable illumination in low-light conditions. This manual serves as a comprehensive guide to understanding the features, functionalities, and maintenance of the Cosmo headlamp, ensuring that you get the most out of your investment. Whether you're camping, hiking, or simply navigating a dark space, knowing how to use your headlamp efficiently can greatly enhance your experience.

Overview of the Black Diamond Cosmo Headlamp

The Black Diamond Cosmo headlamp is celebrated for its lightweight design, multiple brightness settings, and user-friendly interface. It is equipped with a variety of features that cater to different lighting needs, making it an essential tool for outdoor activities.

Key features of the Cosmo headlamp include:

- **Brightness:** The Cosmo offers different brightness modes, allowing users to adjust the light output based on their specific needs.
- **Battery Life:** With efficient battery management, the headlamp provides prolonged usage, crucial for extended trips.
- **Water Resistance:** The headlamp is designed to withstand wet conditions, making it reliable in diverse environments.
- **Adjustable Beam:** Users can switch between a focused and wide beam, depending on the situation.

Getting Started with the Cosmo Headlamp

Before using the Black Diamond Cosmo headlamp, it is important to familiarize yourself with its components and functions. Below are the essential steps to get started:

Unboxing and Initial Setup

1. Remove the Headlamp from Packaging: Carefully take the headlamp out of its packaging, ensuring that no components are damaged.
2. Insert Batteries: The Cosmo headlamp typically requires three AAA batteries. Follow these steps to insert them:
 - Open the battery compartment located at the back of the headlamp.
 - Insert the batteries according to the polarity indicators (+ and -) marked inside the compartment.
 - Close the compartment securely.

Adjusting the Headlamp for Comfortable Use

- Strap Adjustment: The headlamp comes with an adjustable strap. To ensure a snug fit:
 - Place the headlamp on your head.
 - Adjust the straps both at the back and top until it feels secure but comfortable.
- Tilt Adjustment: The headlamp can be tilted to direct the beam where needed. Adjust the angle by holding the body of the headlamp and gently moving it up or down.

Operating the Black Diamond Cosmo Headlamp

Once your headlamp is set up, it's time to learn how to operate it.

Powering On and Off

- To turn the headlamp on, press the power button located on the top of the unit.
- Pressing the button again will cycle through the different brightness modes.
- To turn off the headlamp, press and hold the power button for a few seconds.

Understanding Brightness Levels

The Cosmo headlamp typically offers multiple brightness settings that can be cycled through as follows:

1. High Mode: Ideal for activities requiring maximum visibility. This mode is suitable for navigating rough terrains or during emergency situations.
2. Medium Mode: Provides a balanced light output, perfect for general use such as reading or cooking.
3. Low Mode: Conserves battery life while providing enough light for close-up tasks.
4. Strobe Mode: A quick, flashing light that can be used for signaling in emergencies.

Battery Management

Efficient battery management is crucial for maximizing the performance of your Black Diamond Cosmo headlamp. Here are some tips:

Checking Battery Levels

Before heading out on an adventure, it's advisable to check the battery level. The headlamp features a battery indicator that gives you a visual cue of the remaining power.

Replacing Batteries

When the light dims or the headlamp fails to turn on, it may be time to replace the batteries. Follow the initial setup instructions to replace old batteries with new ones, ensuring that you use the correct type and polarity.

Battery Care and Storage

To extend the lifespan of your batteries:

- Remove batteries when not in use for extended periods.
- Store batteries in a cool, dry place away from direct sunlight.
- Use high-quality batteries for optimal performance.

Maintenance and Care

Proper maintenance is essential to ensure the longevity and functionality of your Black Diamond Cosmo headlamp. Here are some maintenance tips:

Cleaning the Headlamp

- Exterior Cleaning: Wipe the exterior with a damp cloth to remove dirt and debris. Avoid using harsh cleaning agents that could damage the materials.
- Lens Care: If the lens becomes foggy or dirty, gently clean it with a soft cloth.

Storage Tips

- Store the headlamp in a cool, dry place when not in use.
- Avoid leaving it in extreme temperatures, as this can affect battery performance and the integrity of the headlamp.

Common Issues and Troubleshooting

While the Black Diamond Cosmo headlamp is designed for durability and reliability, users may encounter occasional issues. Below are some common problems and their solutions:

Headlamp Does Not Turn On

- Check Battery Installation: Ensure that the batteries are inserted correctly, following the polarity indicators.
- Replace Batteries: If the batteries are old or depleted, replace them with new ones.

Light Flickers or Dims

- Battery Level: Verify the battery level; replace if necessary.
- Contact Issues: Check to see if there is any corrosion or debris on the battery contacts that might be causing poor connectivity.

Water Damage

If your headlamp has been exposed to water:

- Drying: Remove the batteries and dry the headlamp with a cloth.
- Inspect for Moisture: Allow the headlamp to air dry completely before reinserting the batteries.

Conclusion

The Black Diamond Cosmo headlamp is an invaluable tool for anyone needing reliable illumination in various conditions. With its multiple features, including adjustable brightness, water resistance, and lightweight design, it caters to a wide range of activities from camping to emergency preparedness. By following this manual, users can ensure they are well-equipped to operate, maintain, and troubleshoot their headlamp, making it a dependable companion on any adventure. Whether you're an experienced outdoors person or a novice, understanding the functionalities of your Cosmo headlamp will enhance your outdoor experiences and keep you safe in the dark.

Frequently Asked Questions

How do I turn on the Black Diamond Cosmo headlamp?

To turn on the Black Diamond Cosmo headlamp, press the power button located on the top of the lamp. A single press will activate the white LED, while pressing and holding will cycle through the brightness levels.

What are the different light modes available on the Black Diamond Cosmo headlamp?

The Black Diamond Cosmo headlamp features multiple light modes including full strength white, dimming, strobe, and proximity modes. You can switch between these modes using the power button.

How do I change the batteries in the Black Diamond Cosmo headlamp?

To change the batteries, unscrew the battery compartment located at the back of the headlamp. Replace the old batteries with new ones, ensuring they are oriented correctly, and then securely close the compartment.

Is the Black Diamond Cosmo headlamp water-resistant?

Yes, the Black Diamond Cosmo headlamp is rated IPX4 for water resistance, meaning it can withstand splashes of water from any direction but should not

be submerged.

What is the maximum brightness output of the Black Diamond Cosmo headlamp?

The maximum brightness output of the Black Diamond Cosmo headlamp is approximately 200 lumens, which provides a powerful beam for various activities.

Can I adjust the angle of the Black Diamond Cosmo headlamp?

Yes, the Black Diamond Cosmo headlamp features an adjustable hinge that allows you to tilt the light beam up or down for better visibility.

Where can I find the manual for the Black Diamond Cosmo headlamp?

The manual for the Black Diamond Cosmo headlamp can be found on the official Black Diamond website in the support or product manuals section, or you can refer to the printed manual included in the product packaging.

Find other PDF article:

<https://soc.up.edu.ph/35-bold/files?ID=bQV66-3919&title=k-words-in-science.pdf>

[Black Diamond Cosmo Headlamp Manual](#)

BLACK+DECKER

HELP CENTER Welcome to the Black & Decker Help Center. Here, you can connect with us, engage with fellow customers in our community section, and find answers to FAQs. We're ...

Register your products | BLACK+DECKER

Looking to register your products? Begin by starting an account on blackanddecker.com. Having an account on is like having a superpower for your BLACK+DECKER® tools and gadgets. You ...

BLACK+DECKER

...
...

Home | BLACK+DECKER

Official website of BLACK+DECKER™. See our power tools, garden tools, and more. Find information on products, where to buy, news, and customer service.

Workmate™ Portable Workbench, 425-To-550-Pound Capacity

Holding up to 550lbs, the BLACK+DECKER portable project center and vise is the perfect addition to your tool set. This workstation is multipurpose and helps you set up your project materials in ...

Car Vacuums | BLACK+DECKER

BLACK+DECKER dustbuster car vacuums are handy for cleaning in tight spaces. Lightweight and portable, these vacs will be a favorite car, truck, and vehicle accessory.

Accessories + Parts | BLACK+DECKER

Find all your needed accessories and spare parts for BLACK+DECKER® appliances, tools and more here. Enjoy sanding discs, string trimmer line, circular saw parts, sawzall attachments, ...

Electric Leaf Blowers | BLACK+DECKER

Using a guide or tool to hang straight pictures ensures precision and alignment, preventing crooked displays and saving time on adjustments. Get organized with modular drawer units, ...

Account | BLACK+DECKER

Official website of BLACK+DECKER™. See our power tools, garden tools, and more. Find information on products, where to buy, news, and customer service.

Electric Lawn Mowers | BLACK+DECKER

For the lawn enthusiast or perfectionist, BLACK+DECKER® offers gas or electric lawnmowers. Browse through our collection for electric, corded mowers.

BLACK+DECKER

HELP CENTER Welcome to the Black & Decker Help Center. Here, you can connect with us, engage with fellow customers in our community section, and find answers to FAQs. We're ...

Register your products | BLACK+DECKER

Looking to register your products? Begin by starting an account on blackanddecker.com. Having an account on is like having a superpower for your BLACK+DECKER® tools and gadgets. You ...

BLACK+DECKER

[illegible]

Home | BLACK+DECKER

Official website of BLACK+DECKER™. See our power tools, garden tools, and more. Find information on products, where to buy, news, and customer service.

Workmate™ Portable Workbench, 425-To-550-Pound Capacity

Holding up to 550lbs, the BLACK+DECKER portable project center and vise is the perfect addition to your tool set. This workstation is multipurpose and helps you set up your project materials in ...

Car Vacuums | BLACK+DECKER

BLACK+DECKER dustbuster car vacuums are handy for cleaning in tight spaces. Lightweight and portable, these vacs will be a favorite car, truck, and vehicle accessory.

Accessories + Parts | BLACK+DECKER

Find all your needed accessories and spare parts for BLACK+DECKER® appliances, tools and more here. Enjoy sanding discs, string trimmer line, circular saw parts, sawzall attachments, ...

Electric Leaf Blowers | BLACK+DECKER

Using a guide or tool to hang straight pictures ensures precision and alignment, preventing crooked displays and saving time on adjustments. Get organized with modular drawer units, ...

Account | BLACK+DECKER

Official website of BLACK+DECKER™. See our power tools, garden tools, and more. Find information on products, where to buy, news, and customer service.

Electric Lawn Mowers | BLACK+DECKER

For the lawn enthusiast or perfectionist, BLACK+DECKER® offers gas or electric lawnmowers. Browse through our collection for electric, corded mowers.

Discover how to maximize your Black Diamond Cosmo headlamp with our comprehensive manual. Get tips

[Back to Home](#)