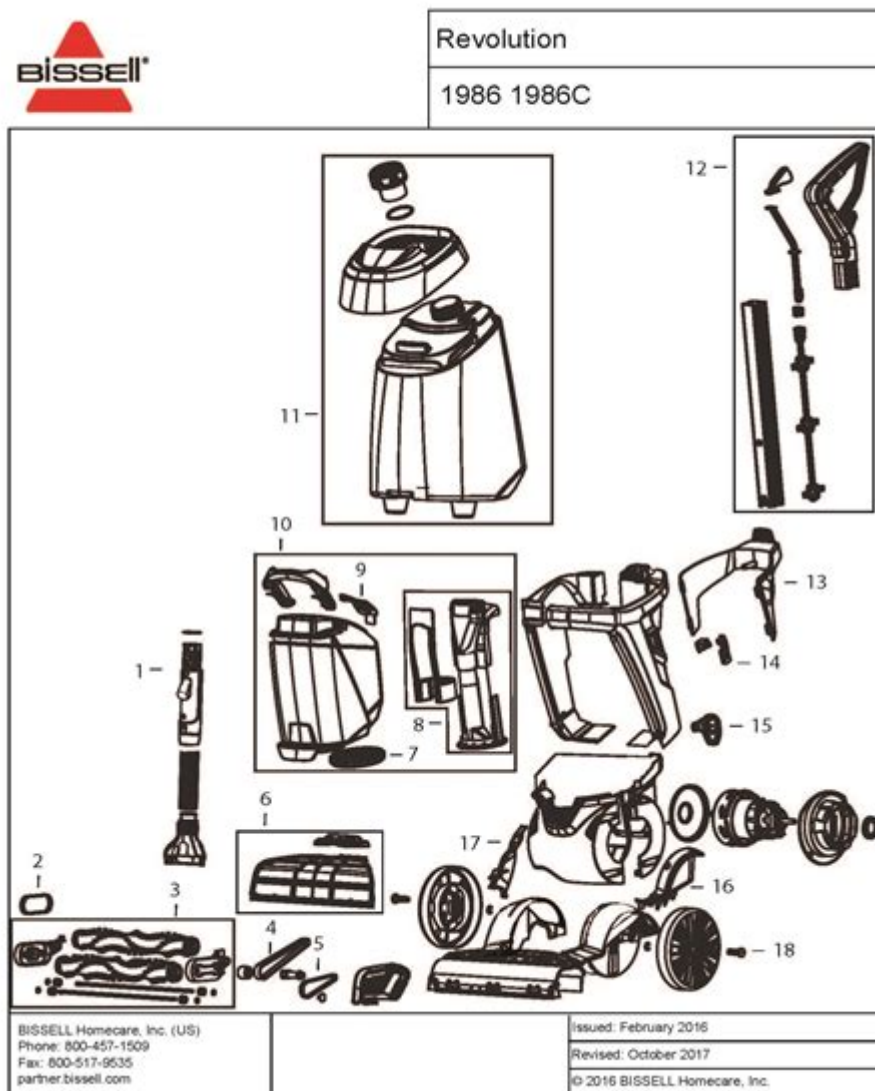


Bissell Proheat 2x Revolution Pet Pro Parts Diagram



Bissell ProHeat 2X Revolution Pet Pro Parts Diagram is an essential resource for pet owners and carpet cleaning enthusiasts alike. Understanding the components of your Bissell ProHeat 2X Revolution Pet Pro can help you maintain your machine effectively and troubleshoot any issues that arise. This article will delve into the various parts of this carpet cleaning system, providing a comprehensive overview of its components and their functions.

Overview of the Bissell ProHeat 2X Revolution Pet Pro

The Bissell ProHeat 2X Revolution Pet Pro is designed to tackle tough pet stains and odors while providing powerful cleaning capabilities for carpets and upholstery. Featuring advanced technology and a user-friendly design, this machine is popular among pet owners. Its effectiveness is largely due

to the various parts working together, which we will explore in detail below.

Key Components of the Bissell ProHeat 2X Revolution Pet Pro

Understanding the key components of the Bissell ProHeat 2X Revolution Pet Pro will help users appreciate how the machine operates. Here are the main parts of the machine:

1. Water Tank

- Clean Water Tank: This tank holds fresh water mixed with cleaning solution. It is removable for easy filling and cleaning.
- Dirty Water Tank: This tank collects the dirty water and debris extracted from the carpet. It has a transparent design, making it easy to see when it needs to be emptied.

2. Carpet Cleaning Formula

- Solution Tank: The Bissell ProHeat 2X Revolution Pet Pro uses a specially formulated cleaning solution that enhances cleaning performance. Users can choose from various Bissell cleaning formulas designed for pet stains and odors.

3. Brush Roll

- Powerful Brush Roll: The brush roll consists of multiple rows of bristles designed to agitate carpet fibers and lift dirt and pet hair effectively. The brush roll is easy to remove for cleaning or replacement.

4. Nozzle Assembly

- Cleaning Nozzle: This part directs the cleaning solution and water onto the carpet while suctioning away the dirty water. The nozzle is designed for maximum efficiency and can be cleaned easily.

5. Handle and Trigger

- Ergonomic Handle: The handle is designed for comfort and ease of use, allowing users to maneuver the machine effortlessly.
- Trigger: The trigger releases cleaning solution onto the carpet when pressed, allowing for targeted cleaning in high-traffic areas or stubborn stains.

6. Hose and Upholstery Tool

- Hose: The flexible hose allows users to reach difficult spots, such as stairs or furniture.
- Upholstery Tool: This attachment is perfect for cleaning upholstery, stairs, and other areas where the main unit may not fit.

7. Power Cord

- Power Cord: The ProHeat 2X Revolution Pet Pro comes equipped with a long power cord, allowing users to clean large areas without constantly switching outlets.

Understanding the Parts Diagram

A Bissell ProHeat 2X Revolution Pet Pro parts diagram is invaluable for both assembly and maintenance. Such diagrams typically illustrate the machine's layout and how parts connect and function together. Here's how to interpret the parts diagram:

1. Visual Representation

- Labels: Each part is labeled with a corresponding number or letter, making identification straightforward.
- Connections: Diagrams often depict where parts connect, helping users understand how to assemble or disassemble the machine.

2. Maintenance and Troubleshooting

- Identifying Parts for Replacement: When a part malfunctions or wears out, the diagram helps locate the correct replacement part.
- Maintenance Tips: Some diagrams provide notes on regular maintenance tasks, such as cleaning the brush roll or emptying the dirty water tank.

3. Where to Find Parts Diagrams

- Manufacturer's Website: Bissell often provides downloadable diagrams and manuals on their official website.
- Retailer Websites: Many retailers that sell Bissell products also include parts diagrams for the convenience of their customers.

Common Issues and Solutions with the Bissell ProHeat 2X Revolution Pet Pro

Being aware of common problems that can arise with the Bissell ProHeat 2X Revolution Pet Pro, along with their solutions, can enhance the user experience and prolong the machine's lifespan.

1. Loss of Suction

- Clogged Hose: Inspect the hose for clogs and remove any debris that may be obstructing airflow.
- Dirty Filters: Clean or replace the filters as needed to ensure optimal performance.
- Full Dirty Water Tank: Always check that the dirty water tank is emptied frequently to maintain suction power.

2. Brush Roll Not Spinning

- Check for Blockages: Ensure there are no hair or debris wrapped around the brush roll.
- Motor Issues: If the brush roll still doesn't spin, it may indicate a motor malfunction that requires professional servicing.

3. Leaking Water

- Loose Connections: Ensure that all tanks are securely attached to the machine.
- Cracked Tanks: Inspect the tanks for any cracks or damage that may cause leaks, and replace them as necessary.

Maintenance Tips for Longevity

Regular maintenance is crucial for ensuring the Bissell ProHeat 2X Revolution Pet Pro operates efficiently. Here are some tips:

1. Regular Cleaning of Parts

- Brush Roll: Clean the brush roll after each use to remove hair and debris.
- Tanks: Rinse both the clean and dirty water tanks with warm water regularly to prevent buildup.

2. Use Only Recommended Cleaning Solutions

- Using non-Bissell solutions can damage the machine and void the warranty. Always opt for solutions

specifically designed for the Bissell ProHeat 2X Revolution Pet Pro.

3. Store Properly

- Store the machine in a cool, dry place. Avoid leaving it in extreme temperatures that could damage the components.

Conclusion

In conclusion, the Bissell ProHeat 2X Revolution Pet Pro parts diagram serves as a valuable tool for understanding and maintaining your carpet cleaning machine. By familiarizing yourself with its various components, you can ensure optimal performance and longevity. Regular maintenance and proper troubleshooting can keep this powerful machine in excellent working condition, making it an invaluable asset for pet owners and anyone looking to maintain clean carpets. Remember to consult the parts diagram and user manual for specific guidance on your model. With the right care, your Bissell ProHeat 2X Revolution Pet Pro will provide years of effective cleaning solutions for your home.

Frequently Asked Questions

What is the purpose of the Bissell ProHeat 2X Revolution Pet Pro parts diagram?

The parts diagram helps users identify and locate various components of the Bissell ProHeat 2X Revolution Pet Pro, making it easier to understand the machine's assembly and troubleshoot issues.

Where can I find a parts diagram for the Bissell ProHeat 2X Revolution Pet Pro?

You can find the parts diagram in the user manual, on the Bissell website, or by contacting Bissell customer service for assistance.

What are common parts depicted in the Bissell ProHeat 2X Revolution Pet Pro parts diagram?

Common parts include the water tank, cleaning solution tank, brush roll, filters, and various screws and connectors.

How can I use the parts diagram to identify a replacement part for my Bissell ProHeat 2X Revolution Pet Pro?

By comparing the part number or visual representation in the diagram with the actual component on your machine, you can easily identify the replacement part needed.

Is the Bissell ProHeat 2X Revolution Pet Pro parts diagram available online?

Yes, the parts diagram is typically available on the Bissell website under the support or product information sections.

What should I do if a part from the Bissell ProHeat 2X Revolution Pet Pro is missing?

Refer to the parts diagram to confirm which part is missing, then contact Bissell customer service or an authorized dealer to order a replacement.

Are there any specific tools required for replacing parts on the Bissell ProHeat 2X Revolution Pet Pro?

Basic tools like a screwdriver and possibly pliers may be required, depending on which part you are replacing, as indicated in the parts diagram.

Can I repair my Bissell ProHeat 2X Revolution Pet Pro using the parts diagram?

Yes, the parts diagram provides a visual guide that can assist in performing repairs, but it's important to follow the manufacturer's instructions for safe handling.

How often should I check the parts of my Bissell ProHeat 2X Revolution Pet Pro using the parts diagram?

It's advisable to check the parts regularly, particularly before deep cleaning sessions, to ensure everything is functioning properly and to replace any worn parts.

Find other PDF article:

<https://soc.up.edu.ph/12-quote/Book?docid=hFr26-2608&title=cheat-sheet-periodic-table.pdf>

[Bissell Proheat 2x Revolution Pet Pro Parts Diagram](#)

EV675® Docking Station 1618525 | BISSELL® Robotic Parts

Replacement Docking Station fits the BISSELL® EV675® Robotic Vacuum Cleaner, part 1618525. Genuine BISSELL® Robotic Vacuum Cleaner Parts.

BISSELL®

Parts Replacement parts available on BISSELL.com Model No 1602340 Brush Roll Assembly for Hard Floor Expert® Vacuums \$31.99 Add to Cart Model No 1602083 Handle Assembly for ...

SpinWave® Robot Access Plate 1624774 | BISSELL Parts

Access Plate for Select Robotic Vacuums, including the BISSELL® SpinWave® Wet and Dry Robotic Vacuum, Series 2859, 3115. The Access Plate sits over the brush roll to hold the ...

BISSELL®

Replacement style 9 post motor pleated filter for select upright vacuum cleaners. Genuine BISSELL Vacuum Cleaner Parts.

BISSELL®

Clean through tough messes with the BISSELL PowerFresh Steam Mop, which eliminates 99.9% of germs and bacteria to leave floors shiny and sanitized! Read more about this steam cleaner.

CleanView® Pet Slim Cordless Stick Vacuum 29037 | BISSELL® Parts

Find Genuine BISSELL® Replacement Parts for your BISSELL® CleanView® Pet Slim Cordless Stick Vacuum, Series 29037.

Steam Mop Pet Odor Eliminating Discs 10951 | BISSELL® Parts

Replacement pet odor eliminating scent discs for your steam mop in a pack of 8. Genuine BISSELL Steam Cleaner Parts.

BISSELL®

Two ways to find your Parts and Supplies. OR 2. Use the categories below. Parts Replacement parts available on BISSELL.com Model No 1627265 Model No 1627262 Model No 1627264 ...

ProHeat 2X® Revolution® Pet Storage Tray 1613576 | BISSELL

BISSELL® Rinse & Storage Tray for ProHeat 2X® Revolution® carpet cleaner makes cleaning up and storing your machine easy and mess free! The tray washes and rinses brush rolls for you.

Brush Block Rubber Nubs 1640375 | BISSELL® Portable Cleaner Parts

Just register BISSELL products, make online purchases, and participate in special events and online activities. You can keep track of purchases and easily reorder replacement items ...

EV675® Docking Station 1618525 | BISSELL® Robotic Parts

Replacement Docking Station fits the BISSELL® EV675® Robotic Vacuum Cleaner, part 1618525. Genuine BISSELL® Robotic Vacuum Cleaner Parts.

BISSELL®

Parts Replacement parts available on BISSELL.com Model No 1602340 Brush Roll Assembly for Hard Floor Expert® Vacuums \$31.99 Add to Cart Model No 1602083 Handle Assembly for Hard Floor Expert Canister Vacuum \$45.99 Add to Cart Model No 1602088 Dirt Tank for Hard Floor Expert Canister Vacuums No Longer Available

SpinWave® Robot Access Plate 1624774 | BISSELL Parts

Access Plate for Select Robotic Vacuums, including the BISSELL® SpinWave® Wet and Dry Robotic Vacuum, Series 2859, 3115. The Access Plate sits over the brush roll to hold the brush in place on the bottom of the vacuum. To get to the brush roll you have to pinch the tabs inward and pull to remove. This item works with 2 products. View Products

BISSELL®

Replacement style 9 post motor pleated filter for select upright vacuum cleaners. Genuine BISSELL Vacuum Cleaner Parts.

BISSELL®

Clean through tough messes with the BISSELL PowerFresh Steam Mop, which eliminates 99.9% of germs and bacteria to leave floors shiny and sanitized! Read more about this steam cleaner.

CleanView® Pet Slim Cordless Stick Vacuum 29037 | BISSELL® Parts

Find Genuine BISSELL® Replacement Parts for your BISSELL® CleanView® Pet Slim Cordless Stick Vacuum, Series 29037.

Steam Mop Pet Odor Eliminating Discs 10951 | BISSELL® Parts

Replacement pet odor eliminating scent discs for your steam mop in a pack of 8. Genuine BISSELL Steam Cleaner Parts.

BISSELL®

Two ways to find your Parts and Supplies. OR 2. Use the categories below. Parts Replacement parts available on BISSELL.com Model No 1627265 Model No 1627262 Model No 1627264 ...

ProHeat 2X® Revolution® Pet Storage Tray 1613576 | BISSELL

BISSELL® Rinse & Storage Tray for ProHeat 2X® Revolution® carpet cleaner makes cleaning up and storing your machine easy and mess free! The tray washes and rinses brush rolls for you.

Brush Block Rubber Nubs 1640375 | BISSELL® Portable Cleaner Parts

Just register BISSELL products, make online purchases, and participate in special events and online activities. You can keep track of purchases and easily reorder replacement items (filters, mop pads) on your personalized My Account page.

Explore the Bissell ProHeat 2X Revolution Pet Pro parts diagram to easily identify components and enhance your cleaning efficiency. Learn more today!

[Back to Home](#)