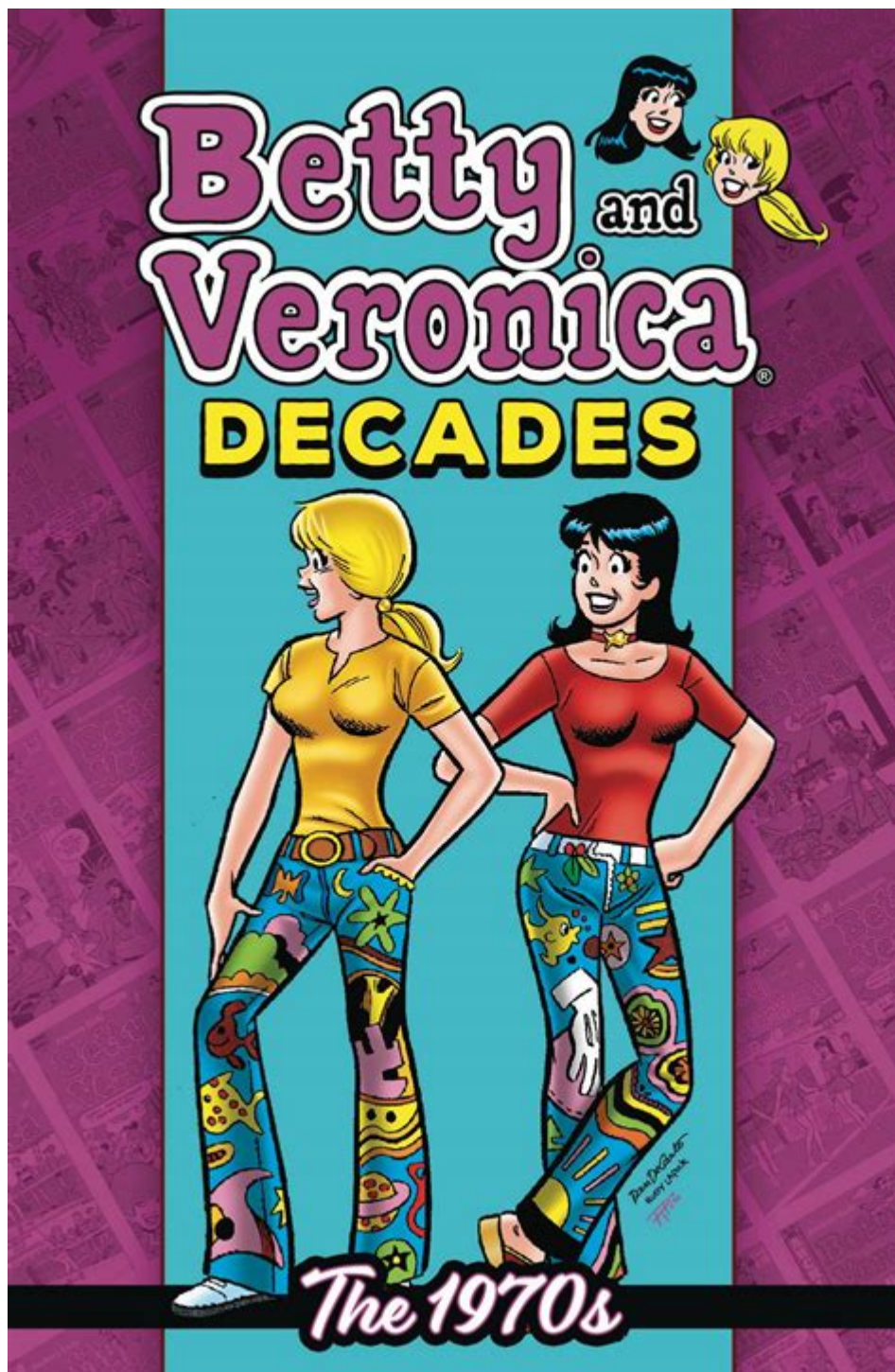


Betty And Veronica In Last Word



Betty and Veronica in Last Word are two iconic characters from the Archie Comics universe, known for their contrasting personalities and their long-standing friendship. As central figures in the comic series, they epitomize the themes of rivalry and camaraderie, often navigating the complexities of adolescence, romance, and friendship. The comic series, which has captivated readers for decades, recently saw the release of a special edition titled "Last Word," which delves deeper into their

relationship and the dynamics of their lives in Riverdale. This article explores the significance of Betty and Veronica in "Last Word," their character development, and the broader implications of their stories in contemporary culture.

The Evolution of Betty and Veronica

Betty Cooper and Veronica Lodge have been beloved characters since their first appearances in the early 1940s. Created by artist Bob Montana and writer John L. Goldwater, they quickly became known for their distinct personalities:

Character Profiles

1. Betty Cooper:

- Personality: Betty is often portrayed as kind-hearted, nurturing, and academically inclined. She is known for her loyalty and dedication to her friends and family.
- Appearance: Typically depicted with blonde hair and a wholesome style, her character often embodies the "girl-next-door" archetype.
- Interests: Betty is frequently shown as a talented student, a passionate writer, and a member of various clubs, showcasing her intelligence and creativity.

2. Veronica Lodge:

- Personality: In contrast, Veronica is characterized by her wealth, sophistication, and confidence. She often exhibits a more assertive demeanor and can be seen as the "femme fatale" of Riverdale.
- Appearance: Veronica is usually illustrated with dark hair and fashionable attire, representing the glamorous side of teenage life.
- Interests: She enjoys shopping, social events, and often engages in charitable endeavors, reflecting her privileged background.

Over the years, Betty and Veronica have evolved beyond mere caricatures of good and bad. They

have become symbols of the complexity of female friendships, showcasing how rivalry can coexist with deep affection and mutual respect.

Thematic Exploration in "Last Word"

"Last Word" presents a fresh narrative that allows readers to explore deeper themes surrounding the lives of Betty and Veronica. The storyline examines their friendship in a contemporary context, addressing issues such as self-identity, societal expectations, and the pressures of modern adolescence.

Friendship and Rivalry

At the heart of "Last Word" is the exploration of the delicate balance between friendship and rivalry. Betty and Veronica's relationship illustrates how competition can sometimes strengthen bonds rather than break them. Key themes include:

- Support and Encouragement: Despite their rivalry for Archie Andrews' affections, both girls demonstrate unwavering support for each other in their personal endeavors.
- Conflict Resolution: The narrative showcases moments of tension, highlighting how misunderstandings can arise but ultimately be resolved through open communication and empathy.
- Empowerment: The story empowers both characters, illustrating how they grow individually while also uplifting one another, marking a significant shift in their dynamic.

Self-Discovery and Growth

"Last Word" also places a strong emphasis on self-discovery, showcasing how Betty and Veronica navigate their identities in a rapidly changing world. Key elements include:

- **Personal Goals:** Both characters embark on journeys to pursue their dreams, whether it be in academics, relationships, or personal interests.
- **Breaking Stereotypes:** The narrative challenges traditional gender roles, allowing Betty and Veronica to break free from societal expectations and define their paths.
- **Reflection and Introspection:** Moments of introspection provide readers insight into their thoughts and feelings, allowing for a deeper connection to their character arcs.

Cultural Impact and Relevance

Betty and Veronica's stories resonate with readers of all ages, reflecting both timeless and contemporary issues. Their presence in "Last Word" underscores their relevance in today's society.

Empowerment and Feminism

The character development of Betty and Veronica aligns with the principles of modern feminism. Their narrative addresses themes such as:

- **Agency:** Both characters take control of their lives, making choices that reflect their individual desires rather than succumbing to external pressures.
- **Solidarity:** Through their friendship, they exemplify the importance of female solidarity, encouraging young readers to support one another rather than engage in petty rivalries.
- **Diverse Representation:** The inclusion of diverse characters and scenarios in "Last Word" reflects the changing landscape of society, making the story relatable to a broader audience.

Relationship Dynamics

The relationship between Betty and Veronica serves as a microcosm for understanding complex social

dynamics. Key aspects include:

- Navigating Love: Their competition for Archie serves as a vehicle to explore themes of love, attraction, and the often-complicated nature of teenage romance.
- Friendship Resilience: The story demonstrates that true friendship can withstand trials and tribulations, emphasizing the importance of communication and trust.
- Growth Through Conflict: The conflicts they face often lead to moments of growth, showcasing that challenges can lead to deeper understanding and stronger bonds.

Conclusion: The Lasting Legacy of Betty and Veronica

In "Last Word," Betty and Veronica are not just two girls caught in a love triangle; they are complex characters navigating the tumultuous waters of adolescence. Their legacies extend beyond the pages of comic books, influencing generations of readers through their relatable struggles and triumphs. As they continue to evolve, their stories remind us of the power of friendship, the importance of self-exploration, and the necessity of empathy in our relationships.

The enduring appeal of Betty and Veronica lies in their ability to reflect the multifaceted nature of life. They embody the challenges of growing up, the joys of friendship, and the quest for identity, making them timeless figures in the world of comics. "Last Word" serves as a testament to their lasting legacy, ensuring that their stories will continue to resonate with readers for years to come.

Frequently Asked Questions

What is the main theme of 'Betty and Veronica in Last Word'?

The main theme revolves around friendship, rivalry, and the complexities of relationships between Betty and Veronica as they navigate challenges together.

Who are the primary characters in 'Betty and Veronica in Last Word'?

The primary characters are Betty Cooper and Veronica Lodge, two iconic characters from the Archie Comics series, known for their contrasting personalities and strong friendship.

How does 'Last Word' explore the dynamic between Betty and Veronica?

The story delves into their competitive yet supportive dynamic, highlighting how they balance their differences and come together in the face of adversity.

What kind of challenges do Betty and Veronica face in 'Last Word'?

They face personal challenges, misunderstandings, and external pressures that test their bond and reveal their growth as individuals and friends.

Is 'Betty and Veronica in Last Word' a standalone story or part of a series?

'Last Word' is a standalone story but is often connected to the larger Archie Comics universe, featuring familiar characters and settings.

What artistic style is used in 'Betty and Veronica in Last Word'?

The story employs a vibrant and expressive artistic style typical of Archie Comics, with bold colors and dynamic character expressions that enhance the narrative.

How has 'Betty and Veronica in Last Word' been received by audiences?

The comic has been well-received, praised for its relatable themes and character development, appealing to both long-time fans and new readers.

What message does 'Last Word' convey about friendship?

'Last Word' conveys that true friendship can withstand trials and tribulations, emphasizing the importance of communication, understanding, and support.

Find other PDF article:

<https://soc.up.edu.ph/42-scope/Book?trackid=LNa82-9863&title=mrs-brown-boys-series-3.pdf>

Betty And Veronica In Last Word

Betty - □□

[illegible]

Betty - □□

□□□□□□□□ □□□ 270□□□ 19,244 □□□

Betty Azar English grammar in use ...

Betty Azar English grammar in use

Betty - □□

Jul 15, 2025 · 000000000000000000000000-0000-4400000000 PDF00000 000000 ...

RNG ADC Betty Uzi

BETTY BETTY UZI,BETTY 17 19 UZI BETTY
UZI ...

XXXXXXXXXXXXXXXXXXXX@XXXBetty X...

7

Betty - ☐

0000 0000 0000 ICP 110745 0 · 0 ICP 13052560 0 - 1 · 00000 11010802020088 0 · 00000000000000
11220250001 · 0000 [2022]2674-081 0 ...

betty□□□□□□□□□□□□? - □□

Aug 8, 2016 · betty? betty 1/A+1/B=1, A,B, [At], [Bt], t

□□□□□□□□□□□□□□ - □□

Oct 31, 2017 · A KS Dolores Iris Y ...

MAC -

item Terminal Rust Alacritty ...

Betty -

Jul 10, 2025 · 2011 1 ...

Betty -

270 19,244

Betty AzarEnglish grammar in use ...

Betty AzarEnglish grammar in use ...

Betty -

Jul 15, 2025 · -44 PDF ...

RNG ADC Betty Uzi

BETTY BETTY UZI, BETTY 17 19 UZI BETTY UZI ...

@ Betty ...

@ Betty 7

Betty -

0 0 ICP 110745 · ICP 13052560 - 1 · 11010802020088 · 11220250001 · [2022]2674-081 ...

betty? -

Aug 8, 2016 · betty? 1/A+1/B=1, A,B, [At], [Bt], t

-

Oct 31, 2017 · A KSX KS Dolores Iris Y ...

MAC -

item Terminal Rust Alacritty ...

Explore the dynamic duo of Betty and Veronica in "Last Word." Dive into their evolving friendship and rivalry. Discover how their stories unfold!

[Back to Home](#)