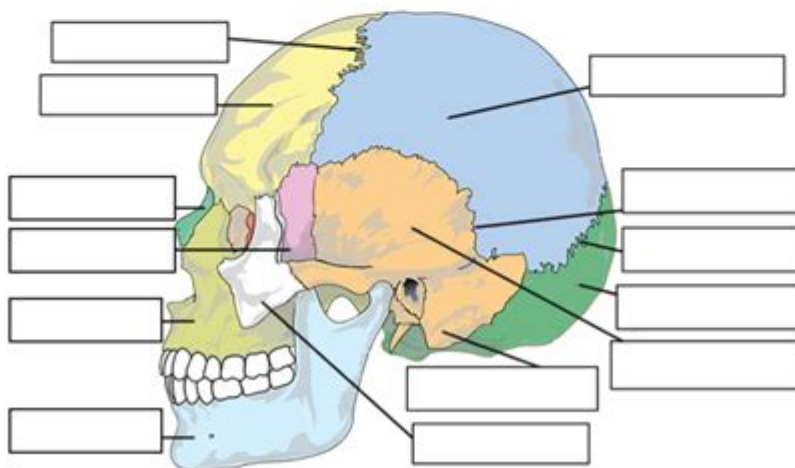
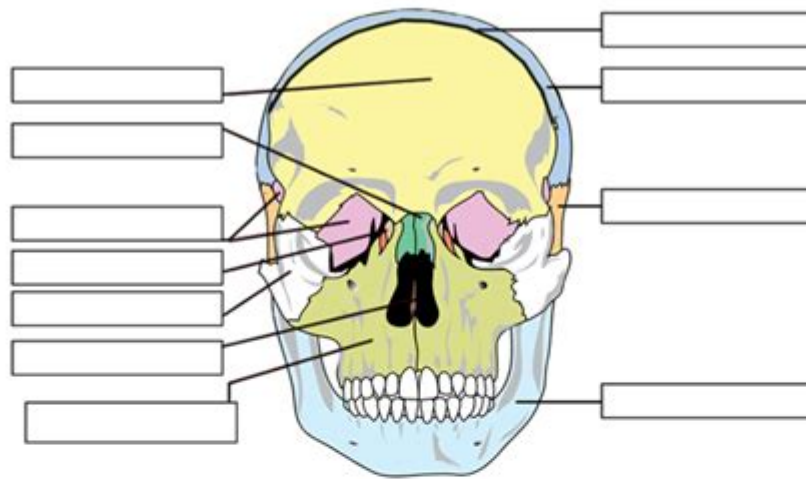


# Blank Skull Labeling Worksheet

Skull Labeling



**Blank skull labeling worksheet** is an invaluable educational tool for students, educators, and professionals in the fields of anatomy, medicine, and biology. This worksheet is designed to help users identify and memorize the various parts of the human skull, providing a hands-on approach to learning that can enhance retention and understanding. Whether you're a student preparing for an exam, a teacher looking for a resource to support your lessons, or a medical professional refreshing your knowledge, a blank skull labeling worksheet can be an effective resource.

## Understanding the Importance of Skull Anatomy

The human skull is a complex structure composed of numerous bones that serve vital functions. Understanding skull anatomy is crucial for various fields, including medicine, dentistry, anthropology, and forensic science. Here are a

few reasons why skull anatomy is important:

- **Medical Applications:** Knowledge of the skull is essential for diagnosing and treating head injuries, neurological conditions, and diseases.
- **Dentistry:** Dentists need to understand skull anatomy to perform procedures effectively and to comprehend the relationship between the teeth and jaw.
- **Forensic Science:** Forensic experts analyze skulls to identify victims and determine causes of death.
- **Anthropology:** Anthropologists study skulls to understand human evolution and the characteristics of different populations.

## Components of the Human Skull

The human skull is divided into two main parts: the cranium and the facial skeleton. Each part contains several bones that contribute to the overall structure.

### The Cranium

The cranium protects the brain and supports the structures of the face. It consists of eight bones:

1. Frontal Bone - The forehead region.
2. Parietal Bones (2) - Located on the sides and top of the skull.
3. Temporal Bones (2) - Found on the sides of the skull, near the ears.
4. Occipital Bone - The back and base of the skull.
5. Sphenoid Bone - A complex bone that helps form the base of the skull.
6. Ethmoid Bone - A light, spongy bone located between the eyes.

### The Facial Skeleton

The facial skeleton comprises 14 bones that form the structure of the face:

1. Nasal Bones (2) - The bridge of the nose.
2. Maxillae (2) - The upper jaw.
3. Zygomatic Bones (2) - The cheekbones.
4. Palatine Bones (2) - The back part of the hard palate.
5. Lacrimal Bones (2) - The small bones forming the eye socket.

6. Inferior Nasal Conchae (2) - The bones forming the sides of the nasal cavity.
7. Vomer - The bone forming part of the nasal septum.
8. Mandible - The lower jawbone, the only movable bone of the skull.

## Benefits of Using a Blank Skull Labeling Worksheet

Utilizing a blank skull labeling worksheet offers several advantages for learners and educators alike:

- **Visual Learning:** Engaging with visual representations of the skull helps reinforce memory through spatial recognition.
- **Active Participation:** Actively labeling the skull promotes deeper cognitive processing, making it easier to remember anatomical terms.
- **Self-Assessment:** Worksheets can serve as a tool for self-testing and identifying areas where further study is needed.
- **Group Activities:** They can be used in collaborative learning environments to encourage discussion and teamwork among students.

## How to Effectively Use a Blank Skull Labeling Worksheet

To maximize the benefits of a blank skull labeling worksheet, consider the following methods:

### 1. Prepare Beforehand

Familiarize yourself with the key terms and functions of each bone in the skull. This foundational knowledge will make the labeling process easier and more intuitive.

### 2. Utilize Multiple Resources

Refer to textbooks, online resources, and videos that provide detailed explanations of skull anatomy. This will give you a broader understanding and

context as you fill out your worksheet.

### 3. Label in Stages

Break the labeling process into manageable parts. Start by labeling the cranium, then move on to the facial skeleton. This segmented approach can prevent feeling overwhelmed.

### 4. Use Color-Coding

Consider using color-coded pens or markers to differentiate between the various bones. For example, use one color for cranial bones and another for facial bones. This visual distinction can enhance retention.

### 5. Test Yourself

After labeling the worksheet, cover the names and try to recall them from memory. This self-testing technique can significantly improve your retention and recall ability.

## Where to Find Blank Skull Labeling Worksheets

There are various places where you can find blank skull labeling worksheets:

- **Educational Websites:** Many educational platforms offer free downloadable worksheets tailored for anatomy studies.
- **Textbooks:** Anatomy textbooks often include worksheets or can direct you to associated resources.
- **Teachers and Professors:** Educators may provide their own worksheets or suggest reliable sources for obtaining them.
- **Online Marketplaces:** Websites like Teachers Pay Teachers offer worksheets created by educators for a nominal fee.

## Conclusion

In conclusion, a **blank skull labeling worksheet** serves as an essential resource for anyone looking to deepen their understanding of skull anatomy. By engaging in the labeling process, learners can enhance their knowledge retention, prepare for exams, and gain confidence in their anatomical skills. Whether used in classrooms, study groups, or for individual learning, this worksheet can facilitate a comprehensive understanding of the complex structure of the human skull. Start your journey into skull anatomy today with a blank skull labeling worksheet, and take a step towards mastering this crucial aspect of human biology.

## **Frequently Asked Questions**

### **What is a blank skull labeling worksheet used for?**

A blank skull labeling worksheet is used as an educational tool for students to identify and label the various bones and structures of the human skull.

### **Where can I find a blank skull labeling worksheet?**

Blank skull labeling worksheets can be found in biology textbooks, educational websites, or by searching for printable resources online.

### **What age group is a blank skull labeling worksheet suitable for?**

A blank skull labeling worksheet is typically suitable for middle school and high school students studying anatomy or biology.

### **How can a blank skull labeling worksheet enhance learning?**

It enhances learning by providing a hands-on approach that helps students visualize and memorize the anatomy of the skull through active engagement.

### **Are there digital versions of blank skull labeling worksheets?**

Yes, many educational platforms offer digital versions of blank skull labeling worksheets that can be filled out online or downloaded for printing.

### **Can blank skull labeling worksheets be used for group activities?**

Yes, blank skull labeling worksheets can be effectively used in group activities to encourage collaboration and discussion among students as they learn about skull anatomy.

Find other PDF article:

<https://soc.up.edu.ph/03-page/files?trackid=KTG57-4936&title=a-mote-in-gods-eye.pdf>

## **Blank Skull Labeling Worksheet**

Free Horoscopes, Zodiac Signs, Numerology & More | Horoscope.com

2 days ago · Find free daily, weekly, monthly and 2025 horoscopes at Horoscope.com, your one stop shop for all things astrological. Find out what the stars have aligned for you today!

*Today's Free Daily Horoscopes - 7/28/2025 - Astrology.com*

Daily Horoscopes for all signs. Astrology.com provides over 30 combinations of free daily, weekly, monthly and yearly horoscopes in a variety of interests including love for singles and couples, gay or straight, finance, travel, career, moms, teens, cats and dogs.

### **Free Daily Horoscope For Today**

Read today's free daily horoscope for all zodiac signs. Learn what the day has in store for you with Horoscope.com!

### **Free Daily Horoscopes - Astrology Answers**

This chart reveals the themes and energies currently at play in the Universe, allowing them to write a daily or weekly horoscope for you. They can also use crystals, Tarot, or numerology to give you accurate forecasts for the day ahead.

### **Daily Horoscope: Get Your Real-Time Horoscope for Today**

Discover today's horoscope, crafted in real time by our expert astrologer using NASA data. Get accurate, daily predictions for your zodiac sign.

### **Daily Horoscope - FREE - Read Today's | Astrostyle.com**

Free horoscopes for your sign with the unique style of The AstroTwins! Get daily, weekly and monthly predictions for love, money & more.

*Today's Horoscope | Daily Horoscope for all zodiac signs*

Free daily horoscope and astrology predictions for all zodiac signs. Today's horoscope forecast based on zodiac sign to know what the stars have in store for you today.

### **Free Zodiac Signs Daily Horoscopes for Today | Ceerly**

Free daily horoscopes for all zodiac signs at Ceerly. Our AI astrology experts predict accurate love, career, money & health horoscopes for your everyday.

### **Daily Horoscope - All | Cafe Astrology .com**

1 day ago · Today's Venus-Chiron aspect helps boost your family, home, or personal life, dear Pisces, and it can also be helpful for business matters. You want to improve your domestic environment with the goal of greater comfort or to be kinder and gentler with the people you love.

AstroDiem - Personalized Astrology and Horoscopes

Unlock the secrets of the cosmos with personalized birth chart analysis and daily, weekly, monthly, and yearly horoscopes. Discover your astrological blueprint.

### 17667 Ne 76Th St Redmond, WA - Fred Meyer

Available 7 days a week with evening hours. Add, transfer & refill prescriptions. Save on fuel every time you shop. Plan for your next grocery trip or online order.

### Chase Bank Branch in Redmond | 17667 NE 76th St

Chase Bank branch location at 17667 NE 76TH ST, REDMOND, WA 98052 with address, opening hours, phone number, directions, and more with an interactive map and up-to-date information.

### *Chase Bank Avondale Fred Meyer Branch - Redmond, WA*

Chase Bank Avondale Fred Meyer branch is located at 17667 Ne 76th St, Redmond, WA 98052 and has been serving King county, Washington for over 22 years. Get hours, reviews, customer ...

### **CHASE BANK - 17667 NE 76th St, Redmond WA - Hours, ...**

Chase Bank at 17667 NE 76th St, Redmond WA 98052 - hours, address, map, directions, phone number, customer ratings and reviews.

### *Fred Meyer Pharmacy in Redmond, WA 98052 - (425) 5...*

Fred Meyer Pharmacy located at 17667 Ne 76Th St, Redmond, WA 98052 - reviews, ratings, hours, phone number, directions, and more.

### *Chase Bank - 17667 Ne 76th St (Redmond, WA) - Branchspot*

Nov 30, 2016 · What f..... service Chase Bank Branch Location at 17667 Ne 76th St, Redmond, WA 98052 - Hours of Operation, Phone Number, Address, Directions and Reviews.

### *Chase Bank, Redmond, WA, 17667 NE 76th St - Cylex Local Search*

Check Chase Bank in Redmond, WA, 17667 NE 76th St on Cylex and find ☐ (425) 883-4..., contact info, ☐ opening hours.

### *Fred Meyer - 17667 Ne 76Th St in Redmond, Washington*

Fred Meyer - 17667 Ne 76Th St in Redmond, Washington 98052: store location & hours, services, holiday hours, map, driving directions and more

### **Chase Bank - Redmond, 17667 NE 76th St (1 review, address and ...**

Jun 6, 2025 · Opening hours, contacts and 1 review for Chase Bank at 17667 NE 76th St, Redmond, WA. View nearby places on a map. Leave a review.

### Fred Meyer 17667 NE 76th St, Redmond, WA 98052 - Superpages

Fred Meyer is one of the pioneers of one-stop shopping. They combine a complete grocery supermarket with a drugstore, clothing store, shoe store, fine jewelers, home decor store, home ...

Enhance your understanding of anatomy with our free blank skull labeling worksheet. Perfect for students and educators! Learn more and download now.

[Back to Home](#)