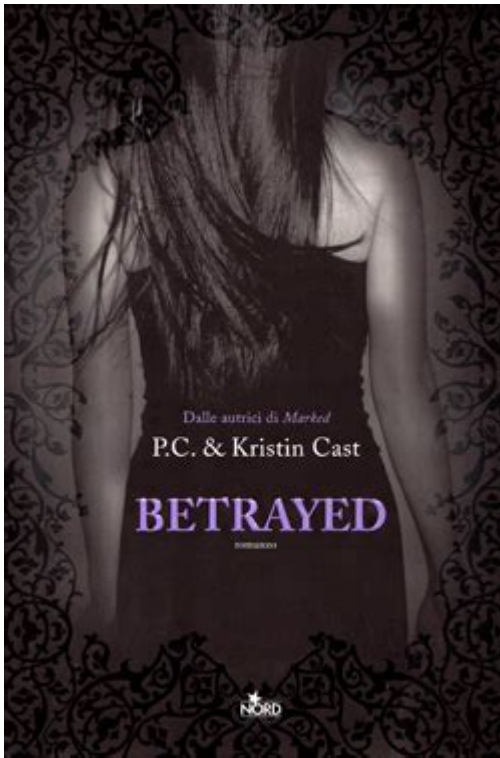


Betrayed By Pc Cast And Kristin Cast



Betrayed is the fifth installment in the widely popular "House of Night" series authored by the mother-daughter duo P.C. Cast and Kristin Cast. This series has captivated readers with its unique blend of vampire lore, teenage angst, and themes of friendship, love, and betrayal. The narrative follows Zoey Redbird, a young fledgling vampire, as she navigates the complexities of her new life while dealing with the trials and tribulations that come with her newfound powers and responsibilities. In this article, we will delve into the various elements of "*Betrayed*," exploring its characters, themes, and overall impact on the young adult literature landscape.

Overview of "Betrayed"

"*Betrayed*" picks up where the previous installment, "*Marked*," left off. Zoey has established herself as a leader among her peers at the House of Night, a vampyre finishing school in Tulsa, Oklahoma. However, her rise to power does not come without challenges. The book explores themes of loyalty, deception, and the consequences of choices made in moments of emotional turmoil.

Plot Summary

The plot of "*Betrayed*" revolves around Zoey's struggle with her responsibilities as the leader of the Dark Daughters, a group of gifted students at the House of Night, while also dealing with personal relationships that are fraught with tension and betrayal. As the story unfolds, Zoey finds herself at a crossroads:

1. **Leadership Challenges:** Zoey faces opposition from other characters who question her authority and decisions. Her position as the leader is tested, leading to conflicts that reveal the true nature of her friendships.
2. **Romantic Turmoil:** The dynamics of Zoey's romantic life become increasingly complicated. Her relationships with Erik, her boyfriend, and other male characters introduce a layer of tension that significantly impacts her emotional state and decision-making.
3. **Mystical Threats:** The danger posed by external forces, including the villainous Neferet, adds urgency to Zoey's challenges. Neferet's manipulations and the darker elements of vampyre lore complicate the plot and bring about significant changes in character arcs.
4. **Self-Discovery:** Throughout the book, Zoey embarks on a journey of self-discovery. She grapples with the responsibilities of her powers and the moral implications of her choices, leading to a deeper understanding of herself and her place in the world.

Character Development

The character arcs in "Betrayed" are pivotal to the story's emotional depth. Each character faces their own struggles, making the narrative rich and layered.

- **Zoey Redbird:** As the protagonist, Zoey undergoes significant growth. She learns to balance her leadership role with her personal desires and confronts the reality of betrayal from those she thought she could trust. Her journey is marked by moments of vulnerability and strength, showcasing her evolution from a fledgling to a more confident leader.
- **Erik Night:** Zoey's romantic interest, Erik, represents both support and conflict in her life. His struggles with jealousy and his desire for acceptance introduce a dynamic that adds tension to their relationship. The evolution of Erik's character reflects the complexities of young love and the impact of external pressures on personal relationships.
- **Neferet:** As the primary antagonist, Neferet embodies betrayal on a grand scale. Her manipulations and dark intentions serve as a constant threat to Zoey and her friends. Neferet's character illustrates the theme of betrayal not only in terms of personal relationships but also in the broader context of power and corruption.
- **Other Characters:** The supporting cast, including friends like Stevie Rae and Damien, play crucial roles in shaping Zoey's experiences. Each character brings their unique perspective on loyalty and betrayal, enriching the overall narrative.

Thematic Elements

"Betrayed" explores several themes that resonate with readers, particularly younger audiences who may be navigating similar experiences in their own lives.

Betrayal and Trust

The theme of betrayal is central to the narrative. Characters grapple with their loyalties, leading to moments of mistrust that challenge their relationships. Important aspects include:

- Friendship: The strain on friendships due to betrayal is a recurring motif. Characters must confront the reality that not everyone has their best interests at heart.
- Romantic Relationships: The complexities of love and trust are highlighted in Zoey's interactions with Erik and other characters. The emotional turmoil stemming from betrayal is palpable and relatable.

Power and Responsibility

As Zoey assumes leadership roles, the theme of power and its associated responsibilities becomes prominent. Key points include:

- The Burden of Leadership: Zoey's experiences reflect the challenges of leadership, including making difficult decisions that may not please everyone.
- The Consequences of Power: The narrative illustrates how power can corrupt and lead to betrayal, particularly through Neferet's character.

Identity and Self-Discovery

Zoey's journey of self-discovery is a significant aspect of "Betrayed." Themes explore:

- Personal Growth: Zoey's struggles with her identity as a fledgling vampire and a leader highlight the importance of self-acceptance and growth.
- Moral Choices: The decisions Zoey makes throughout the book shape her character and reflect broader themes of morality and ethics.

Impact on Young Adult Literature

The "House of Night" series, including "Betrayed," has left a lasting mark on the young adult genre. Its unique blend of fantasy elements with real-life struggles has resonated with readers, encouraging discussions around themes of betrayal, trust, and identity.

Influence on Readers

- Relatable Themes: The challenges faced by Zoey and her friends mirror those experienced by young

adults today, making the story relatable and impactful.

- Encouraging Dialogue: The themes of betrayal and loyalty can foster conversations among readers about their own experiences and relationships.

Legacy in the Genre

- Popularity: The series has garnered a dedicated fanbase, leading to multiple sequels and spin-offs that continue to explore the rich universe created by P.C. Cast and Kristin Cast.

- Inspiration for Future Works: The blend of fantasy and real-life issues in "Betrayed" serves as inspiration for other authors in the young adult genre, showcasing the potential for complex storytelling that resonates with a younger audience.

Conclusion

In conclusion, "Betrayed" by P.C. Cast and Kristin Cast is a compelling exploration of betrayal, trust, and self-discovery set against a backdrop of vampire lore and teenage drama. The character development, thematic depth, and emotional resonance make it a standout installment in the "House of Night" series. As readers follow Zoey's journey, they are invited to reflect on their own experiences with loyalty and betrayal, making the narrative not only entertaining but also thought-provoking. The impact of "Betrayed" on the young adult literature landscape is undeniable, ensuring that its themes and characters will continue to resonate with readers for years to come.

Frequently Asked Questions

What is the main theme of 'Betrayed' by PC Cast and Kristin Cast?

'Betrayed' explores themes of friendship, loyalty, and the complexities of trust, particularly in the context of supernatural elements and personal growth.

How does 'Betrayed' connect to the previous book in the House of Night series?

'Betrayed' is the second book in the House of Night series and picks up directly from the events of 'Marked', continuing the story of Zoey Redbird as she navigates her new life at the House of Night.

What are the major conflicts faced by the protagonist in 'Betrayed'?

In 'Betrayed', Zoey faces conflicts involving betrayal from her friends, the challenges of her new powers, and the looming threat of dark forces that endanger her and her loved ones.

How do PC Cast and Kristin Cast develop their characters in 'Betrayed'?

The authors use a mix of internal monologue, dialogue, and interactions with other characters to deepen the reader's understanding of Zoey and her friends, showcasing their growth and the impact of betrayal on their relationships.

What has been the reader response to 'Betrayed' since its release?

'Betrayed' has received a positive response from readers, particularly for its engaging plot and character development, although some critiques focus on its pacing and the darker themes presented.

Find other PDF article:

<https://soc.up.edu.ph/46-rule/files?ID=PKU05-1625&title=peoplesoft-training-manuals.pdf>

Betrayed By Pc Cast And Kristin Cast

SSL Labs Grading Update: Forward Secrecy, Authenticated ...

Feb 2, 2018 · SSL Labs has started giving a warning if the site doesn't support forward secrecy and/or AEAD suites; or if the site is vulnerable to ROBOT. Penalty for using Symantec Certificates (T) Starting March 1, 2018, SSL Labs will give "T" grade ...

SSL Server Rating Guide · sslabs/research Wiki · GitHub

May 16, 2025 · A weak key, or an exchange procedure that uses only a part of the key (the so-called exportable key exchanges), can result in a weak key exchange phase that makes the per-session secret keys easier to compromise.

Cipher strength detection and grading - Qualys

Jan 30, 2019 · The assessment as WEAK by SSL Labs is most likely because the RSA key exchange used by the cipher suites lacks forward secrecy. However, lack of forward secrecy is not a security weakness. It is just a deployment/configuration choice that represents a trade-off between forensic capabilities and privacy.

Why does SSL Labs now consider CBC suites weak?

May 13, 2019 · Why does SSL labs now mark CBC 256 suites as weak, although equivalent GCM and ChaCha20 are considered strong? Until a few months ago, it was unmarked in reports (neither explicitly as weak or strong), and it is still unmarked in their client lists.

Let's Encrypt and SSL Labs weak Cipher Suites

Feb 2, 2018 · It appears recently SSL Labs is now tagging RSA-only suites as weak too, however it currently does not impact the grade, as I still earn an A+. RSA-only suites are tagged weak because they lack Forward Secrecy.

Fixing SSL Labs Grade on F5 Big-IP - Weak Cipher Suites

May 4, 2018 · The problem is, that you can't really just plainly disable all the older ciphers, as newer ones aren't supported by older clients, so you need to disable the really old and horrible ciphers, while reordering them to always try the best ciphers first, and then falling back upon the less preferable ones until you find the best cipher that the ...

Security Sidebar: Improving Your SSL Labs Test Grade

Dec 23, 2014 · The three criteria used for server configuration are protocol support (30% of grade), key exchange (30% of grade), and cipher strength (40% of grade). Protocol support is graded against the following criteria:

SSL Cipher Suite Order recommended - Microsoft Q&A

Nov 10, 2024 · In general though: Prioritize Stronger Cipher Suites: Prefer ECDHE (Elliptic Curve Diffie-Hellman Ephemeral) key exchange algorithms. These provide forward secrecy, meaning that even if an attacker later compromises the server's private key, ...

SSL and TLS Deployment Best Practices - GitHub

Jan 15, 2020 · You should rely chiefly on the AEAD suites that provide strong authentication and key exchange, forward secrecy, and encryption of at least 128 bits. Some other, weaker suites may still be supported, provided they are negotiated only ...

Weak cipher vulnerability - Qualys QID 38863 - myBroadcom

Mar 8, 2024 · It reports all KEX methods that are considered weak and List all server supported ciphers for each weak key exchange method supported by Server. The criteria of a weak KEX method is as follows: The SSL/TLS server supports key exchanges that are cryptographically weaker than recommended.

Addressing SSL Labs cipher warnings to get a better grade

Jun 28, 2017 · Here's Ivan Ristić, one of the world's greatest experts on TLS (and the creator of the SSL Labs testing tool!) earlier today about the forward secrecy issue: news.ycombinator.com As others have already pointed out, this explanation focuses ...

Achieving an A+ grading at Qualys SSL Labs (Forward Secrecy in IIS)

Feb 2, 2014 · To set up support for Forward Secrecy, the easiest approach (in a Windows/IIS world) is to download the latest version of the IIS Crypto tool. This makes it really easy to get your SSL Ciphers in the right order and the correct ones enabled ...

Kosovo - Wikipedia

Kosovo (Albanees: Kosova, Kosovë; Servisch: Косово, Kosovo), officieel de Republiek Kosovo (Albanees: Republika e Kosovës; Servisch: Република Косово), is een gedeeltelijk erkend ...

25 jaar na het einde van de oorlog in Kosovo neemt de spanning ...

Jun 24, 2025 · Hoewel de oorlog in Kosovo meer dan 25 jaar ten einde kwam nadat de NAVO het Servische leger uit Kosovo verjoeg, sluimert het conflict door in het noorden van het land, waar ...

Kosovo | History, Map, Flag, Population, Languages, & Capital

Jul 17, 2025 · In the early 20th century Kosovo was incorporated into Serbia (later part of Yugoslavia). By the second half of the century, the largely Muslim ethnic Albanians ...

Alles over Kosovo - Praktische info, weetjes & alles voor reizen

Kosovo is een relatief jonge republiek die in 2008 onafhankelijk werd van Servië. Hoewel het door

veel landen, waaronder Nederland en België, als soeverein wordt erkend, erkennen sommige ...

Feiten over Kosovo - De Standaard

Feb 16, 2008 · Servië, gesteund door Rusland, is fel tegen een onafhankelijk Kosovo en is van plan te verhinderen dat de VN-Veiligheidsraad, waarin Rusland vetorecht heeft, de ...

Kosovo - Informatie over toerisme, zakendoen en blogs

Praktische informatie over Kosovo. Over religie, steden, de onafhankelijkheid, bezienswaardigheden, voetbalelftal, nieuws en reisinformatie.

Kosovo : Politique, Relations avec l'UE, Géographie, Economie, ...

Feb 14, 2025 · Tout savoir sur le Kosovo : son régime, ses politiques, ses relations avec l'Union européenne, sa géographie, son économie et son histoire.

Kosovo - Wikipedia

Kosovo, [a] officially the Republic of Kosovo, [b] is a landlocked country in Southeast Europe with partial diplomatic recognition. It is bordered by Albania to the southwest, Montenegro to the ...

Kosovo - Simple English Wikipedia, the free encyclopedia

Until 2008, Kosovo was a part of Serbia. On 17 February 2008, Kosovo declared independence and said it was now a separate country. Since then, 104 UN member countries have ...

Kosovo | Reisinformatie - Landenkompas

Kosovo (Albanees: Kosovë, Kosova, Servisch: Kocovo) is een onafhankelijke staat in Europa dat zijn onafhankelijkheid in 2008 heb uitgeroepen. Deze onafhankelijkheid wordt niet door alle ...

"Feeling betrayed by PC Cast and Kristin Cast? Discover how their latest works have impacted fans and what it means for the future of their stories. Learn more!"

[Back to Home](#)