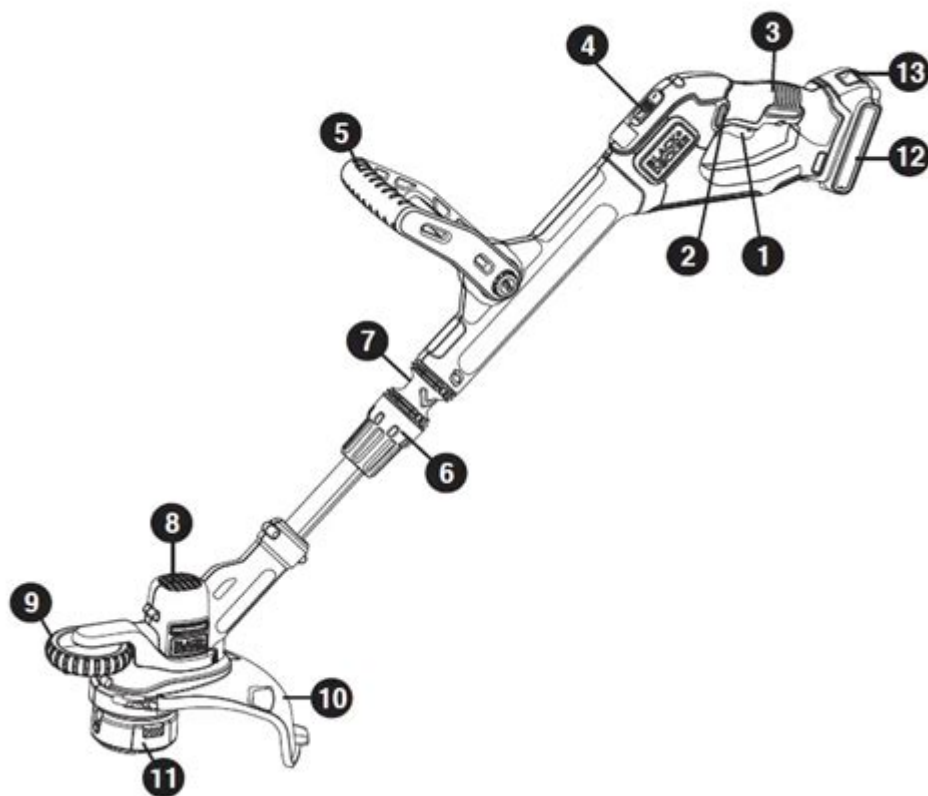


# Black Decker Trimmer Edger Instruction Manual

Fig. A

LST522



**Black Decker trimmer edger instruction manual** is an essential resource for anyone looking to maintain their lawn and garden effectively. Understanding how to operate and care for your Black & Decker trimmer edger will not only enhance your gardening experience but also prolong the life of your equipment. This article will delve into the contents of the instruction manual, providing you with step-by-step guidance on assembly, operation, maintenance, and troubleshooting.

## Understanding Your Black & Decker Trimmer Edger

Before diving into the specifics of the instruction manual, it's important to familiarize yourself with the Black & Decker trimmer edger features. This versatile tool is designed to trim grass edges, define borders, and efficiently manage overgrown areas. Most models combine both trimming and edging capabilities, making them ideal for home landscaping.

### Key Features

- **Powerful Motor:** Provides sufficient power for efficient trimming and edging.
- **Adjustable Height:** Many models offer adjustable cutting heights to accommodate different lawn

types.

- Rotating Handle: Facilitates easy maneuvering while trimming and edging.
- Lightweight Design: Ensures easy handling and reduced fatigue during extended use.
- Dual-Line System: Offers improved cutting performance by using two lines for trimming.

## Getting Started: Assembly Instructions

Assembling your Black & Decker trimmer edger is a straightforward process. The instruction manual typically contains detailed instructions, but here's a summary of the assembly steps.

### Tools Required

- Phillips screwdriver
- Flathead screwdriver
- A pair of gloves for safety

### Assembly Steps

1. **Unbox the Tool:** Carefully remove the trimmer edger from the box, ensuring that all parts are included.
2. **Attach the Handle:** Align the handle with the designated slots on the main body of the trimmer. Secure it using the screws provided.
3. **Install the Spool:** Open the spool cover and insert the new line according to the instructions in the manual. Ensure that the line is properly wound and that the spool cover is securely closed.
4. **Adjust the Height:** Depending on your preference, adjust the cutting height using the height adjustment lever.
5. **Check for Loose Parts:** Before operating, ensure all screws and parts are tightened to avoid any mishaps during use.

## Operating Your Black & Decker Trimmer Edger

Once your trimmer edger is assembled, it's time to learn how to operate it effectively. The instruction manual will provide specific details, but here's a general guide on using the tool.

### Preparation Before Use

- **Safety Gear:** Always wear safety goggles, gloves, and long pants to protect yourself from debris.
- **Inspect the Area:** Clear the work area of any large debris, such as rocks or branches, that could damage the trimmer or cause injury.
- **Check the Battery/Power Source:** Ensure that the battery is charged or that the power cord is properly connected.

## Operating Steps

1. **Power On:** Press the power button to start the trimmer. For corded models, ensure the extension cord is plugged in and the outlet is functional.
2. **Adjust the Handle:** Hold the handle with both hands and adjust your grip for comfort.
3. **Begin Trimming:** Start at one end of the area and move in a sweeping motion. Keep the trimmer head slightly above the ground for a clean cut.
4. **Switch to Edging Mode:** If your model has an edging feature, switch to this mode by rotating the head. Position the trimmer along the edge of the garden bed or walkway and make smooth passes.
5. **Maintain a Steady Pace:** Avoid rushing. Maintain a steady pace to ensure an even cut and to avoid damaging the plants or soil.

## Maintenance Tips for Longevity

Regular maintenance is crucial for keeping your Black & Decker trimmer edger in top condition. The instruction manual will provide specific maintenance guidelines, but here are some general tips to follow.

### Daily Maintenance

- **Clean After Use:** After each use, remove grass clippings and debris from the trimmer head to prevent clogging.
- **Inspect the Line:** Check the cutting line for wear. Replace it if it appears frayed or too short.

### Weekly Maintenance

- **Lubricate Moving Parts:** Apply a light lubricant to moving parts as recommended in the manual to reduce friction and wear.
- **Check for Loose Screws:** Periodically check and tighten any loose screws or parts.

### Seasonal Maintenance

- **Inspect Electrical Components:** If you have a corded model, inspect the power cord for any damage. For battery-operated models, check the battery condition and replace if needed.
- **Store Properly:** At the end of the season, clean the tool thoroughly and store it in a dry, cool place to prevent rust and damage.

## Troubleshooting Common Issues

Even with proper use and maintenance, you may encounter some issues with your Black & Decker

trimmer edger. Here are common problems and their solutions.

## Common Issues

- Trimmer Not Starting:
  - Check the power source or battery charge.
  - Ensure the safety switch is engaged.
- Uneven Cutting:
  - Adjust the height setting.
  - Ensure the cutting line is properly installed and not worn out.
- Line Breaks Frequently:
  - Check if the line is suitable for your model.
  - Ensure that the spool is not overfilled.
- Excessive Vibration:
  - Inspect for loose parts.
  - Ensure the trimmer head is properly attached.

## Conclusion

Understanding the **Black Decker trimmer edger instruction manual** is vital for anyone looking to keep their garden neat and tidy. By following the assembly, operation, maintenance, and troubleshooting guidelines, you can ensure that your tool performs optimally for years to come. Regular care and attention will not only enhance your gardening experience but also maximize the efficiency of your trimmer edger, allowing you to achieve a beautifully manicured landscape. Whether you are a seasoned gardener or a beginner, having this knowledge at your fingertips will make your lawn care routine both enjoyable and effective.

## Frequently Asked Questions

### Where can I find the instruction manual for my Black & Decker trimmer edger?

You can find the instruction manual for your Black & Decker trimmer edger on the official Black & Decker website under the 'Support' or 'Manuals' section. You can also check the product packaging or contact customer service for assistance.

### What safety precautions should I follow when using my Black & Decker trimmer edger?

Always wear appropriate safety gear, including eye protection, gloves, and closed-toe shoes. Keep bystanders and pets at a safe distance while operating the edger, and avoid using it in wet conditions.

to reduce the risk of electric shock.

## **How do I replace the line in my Black & Decker trimmer edger?**

To replace the line, unplug the trimmer, remove the spool cover, and take out the old line. Cut a new line to the specified length in the manual, thread it through the spool, and reassemble the spool and cover according to the instructions provided.

## **What type of maintenance is required for the Black & Decker trimmer edger?**

Regular maintenance includes cleaning the trimmer after use, checking the line and replacing it when worn, inspecting the blades for damage, and ensuring the battery is charged (if applicable). Refer to the manual for specific maintenance schedules and tips.

## **Can I use my Black & Decker trimmer edger for heavy-duty tasks?**

While the Black & Decker trimmer edger is suitable for light to medium tasks like edging and trimming grass, it may not be ideal for heavy-duty tasks such as cutting thick brush or heavy weeds. Always refer to the manual for guidance on the tools' capabilities.

## **What do I do if my Black & Decker trimmer edger stops working?**

If your trimmer edger stops working, first check the power source or battery charge. Ensure that the line is not tangled or jammed. If the problem persists, consult the troubleshooting section of the instruction manual for further guidance or contact customer support.

Find other PDF article:

<https://soc.up.edu.ph/11-plot/files?trackid=rFj30-7500&title=cambridge-greek-and-latin-classics.pdf>

## **Black Decker Trimmer Edger Instruction Manual**

### **BLACK+DECKER**

HELP CENTER Welcome to the Black & Decker Help Center. Here, you can connect with us, engage with fellow customers in our community section, and find answers to FAQs. We're here ...

### **Register your products | BLACK+DECKER**

Looking to register your products? Begin by starting an account on blackanddecker.com. Having an account on is like having a superpower for your BLACK+DECKER® tools and gadgets. You ...

### **BLACK+DECKER**

...

...

Holding up to 550lbs, the BLACK+DECKER portable project center and vise is the perfect addition to your tool set. This workstation is multipurpose and helps you set up your project materials in ...

### **Car Vacuums | BLACK+DECKER**

BLACK+DECKER dustbuster car vacuums are handy for cleaning in tight spaces. Lightweight and portable, these vacs will be a favorite car, truck, and vehicle accessory.

### *Accessories + Parts | BLACK+DECKER*

Find all your needed accessories and spare parts for BLACK+DECKER® appliances, tools and more here. Enjoy sanding discs, string trimmer line, circular saw parts, sawzall attachments, ...

### **Electric Leaf Blowers | BLACK+DECKER**

Using a guide or tool to hang straight pictures ensures precision and alignment, preventing crooked displays and saving time on adjustments. Get organized with modular drawer units, ...

### **Account | BLACK+DECKER**

Official website of BLACK+DECKER™. See our power tools, garden tools, and more. Find information on products, where to buy, news, and customer service.

### **Electric Lawn Mowers | BLACK+DECKER**

For the lawn enthusiast or perfectionist, BLACK+DECKER® offers gas or electric lawnmowers. Browse through our collection for electric, corded mowers.

Unlock your Black Decker trimmer edger's full potential with our comprehensive instruction manual. Learn more about setup

[Back to Home](#)