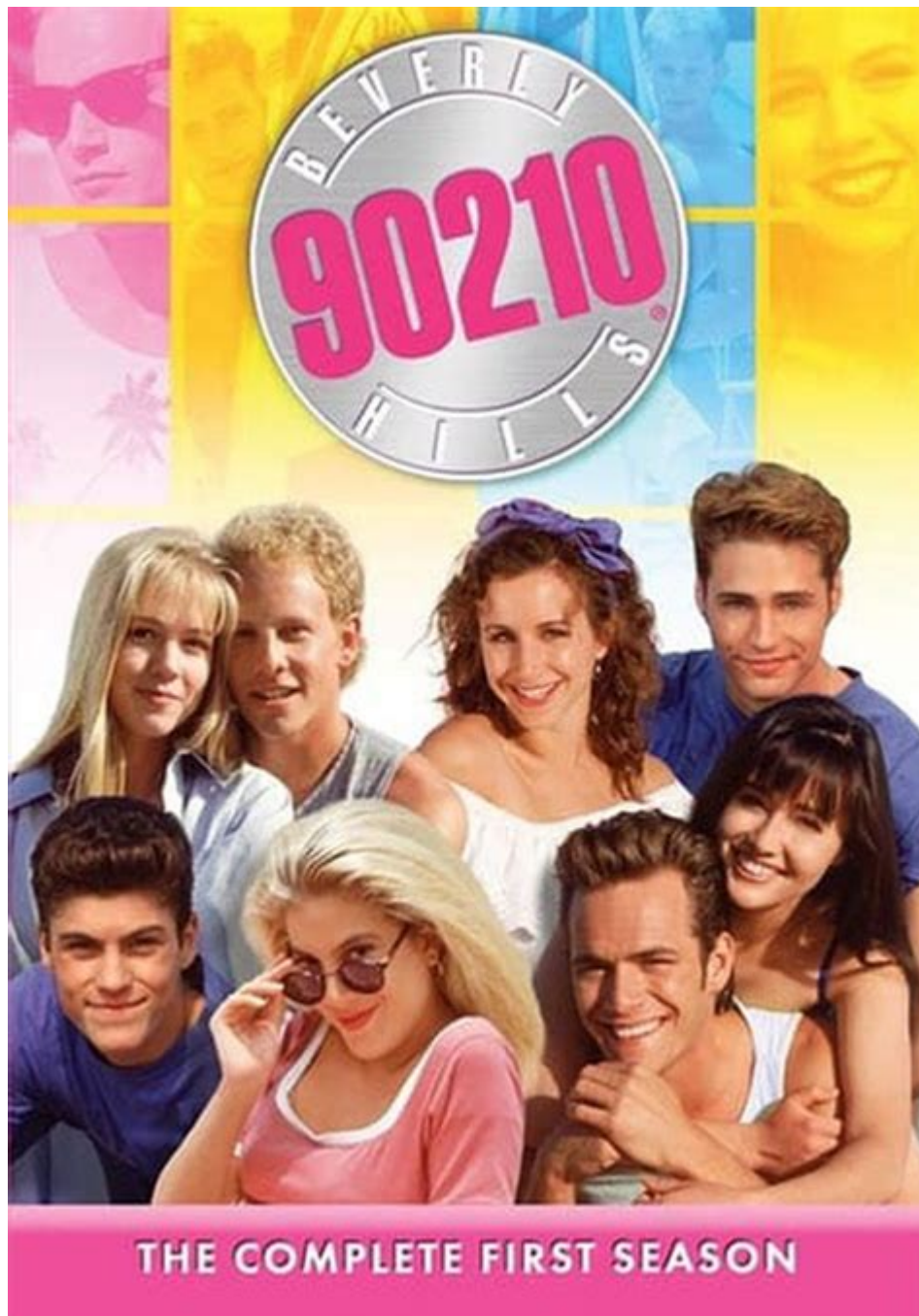


Beverly Hills 90210 Season 1



Beverly Hills 90210 Season 1 marked the inception of a television phenomenon that would not only define a generation but also set the standard for teen dramas in the years to come. Premiering on October 4, 1990, on Fox, this iconic series introduced viewers to the glamorous yet tumultuous lives of teenagers living in the affluent neighborhood of Beverly Hills, California. The show's blend of drama, romance, and social issues resonated with audiences and established a cultural touchstone that still influences media today.

Overview of the Series

Beverly Hills 90210 was created by Darren Star and produced by Aaron Spelling, two prominent figures in the television industry. The series was groundbreaking in its portrayal of teenage life, tackling contemporary issues such as relationships, identity, and the pressures of adolescence. The show's title refers to the zip code for Beverly Hills, a symbol of wealth, privilege, and the challenges that come with it.

Main Characters

The first season introduced a vibrant ensemble cast, each character bringing their own unique perspective and storyline. Here are some of the main characters:

1. Brandon Walsh (Jason Priestley) - The show's protagonist, Brandon is a grounded Midwesterner who moves to Beverly Hills with his family. He struggles to adapt to the extravagant lifestyle of his new peers while trying to maintain his values.
2. Brenda Walsh (Shannen Doherty) - Brandon's twin sister, Brenda is a headstrong and dramatic character who faces her own challenges fitting in at West Beverly High. Her journey is marked by her romantic entanglements and friendships.
3. Kelly Taylor (Jennie Garth) - Initially portrayed as a popular girl, Kelly evolves throughout the season, showcasing her vulnerabilities and desires.
4. Dylan McKay (Luke Perry) - The quintessential bad boy with a mysterious past, Dylan becomes a central character, particularly in his complex relationship with Brenda.
5. Steve Sanders (Ian Ziering) - The wealthy, fun-loving jock who often provides comic relief but also grapples with deeper issues of identity and acceptance.
6. Donna Martin (Tori Spelling) - A sweet and innocent character, Donna often serves as the moral compass for her friends while navigating her own challenges.
7. David Silver (Brian Austin Green) - The aspiring DJ and tech-savvy teen, David adds a layer of modernity and relatability to the group.

Plot Summary of Season 1

The first season consists of 13 episodes, each delving into various aspects of teenage life in Beverly Hills. The overarching narrative revolves around the Walsh family's adjustment to their new environment, exploring issues of friendship, love, and personal growth.

Key Plot Points:

- **The Walsh Family Moves to Beverly Hills:** The series begins with the Walsh family relocating from Minnesota to Beverly Hills. Brandon and Brenda quickly find themselves immersed in a world vastly different from their previous life.
- **High School Dynamics:** The siblings navigate the social hierarchy of West Beverly High, encountering cliques, popularity, and the pressures of maintaining their identities.
- **Romantic Relationships:** The season explores the romantic entanglements among the characters, particularly the growing tension between Brenda and Dylan, as well as Brandon's interest in Kelly.
- **Social Issues:** The show addresses various social issues such as peer pressure, drug use, and the impact of wealth on youth, offering a more realistic portrayal of adolescence.
- **Friendship and Loyalty:** The bonds of friendship are tested throughout the season, with characters facing betrayals and misunderstandings that threaten their relationships.

Significant Themes

Beverly Hills 90210 Season 1 is rich with themes that resonate with viewers, capturing the essence of teenage life during the early '90s.

Wealth and Privilege

The series prominently features the contrast between wealth and the struggles of adolescence. While

the characters enjoy the luxuries of Beverly Hills, they also confront the emotional and social issues that arise from their privileged backgrounds. The show highlights the superficiality of wealth, often depicting the emptiness that accompanies it.

Identity and Self-Discovery

A central theme in the first season is the characters' journey toward self-discovery. Each character grapples with their identity as they navigate friendships, romantic relationships, and societal expectations. The struggle to fit in while remaining true to oneself is a relatable aspect for many viewers.

Friendship and Loyalty

The importance of friendship is a recurring motif throughout the season. The characters support one another through various challenges and personal crises, illustrating the complexities of adolescent relationships. However, the season also portrays the fragility of these friendships, revealing how easily they can be tested by jealousy, betrayal, and misunderstandings.

Cultural Impact and Reception

Upon its release, Beverly Hills 90210 quickly gained a massive following. The show resonated with teenagers and young adults, becoming a cultural phenomenon. It not only entertained but also sparked conversations about significant social issues, making it a staple in the realm of teen dramas.

Ratings and Viewership

The first season of Beverly Hills 90210 received favorable ratings, with millions of viewers tuning in each week. The show's appeal was bolstered by its relatable storylines and engaging characters, leading to a loyal fanbase that would follow the series for a decade.

Influence on Teen Dramas

Beverly Hills 90210 set the template for future teen dramas, influencing shows like "Dawson's Creek," "The O.C.," and "Gossip Girl." Its blend of melodrama, romance, and social commentary became a hallmark of the genre, paving the way for a new era of television that focused on the lives of young adults.

Fashion and Trends

The series also had a significant impact on fashion trends during the '90s. Characters like Brenda and Kelly became style icons, influencing teenage fashion with their outfits. The show's portrayal of high school life, parties, and social events shaped the aesthetic of an entire generation, solidifying its place in pop culture.

Conclusion

Beverly Hills 90210 Season 1 is more than just a television show; it is a cultural landmark that reflects the complexities of adolescence in a unique and engaging manner. Its exploration of themes such as wealth, identity, and friendship resonates with viewers, making it a timeless classic. The characters, their struggles, and triumphs have left an indelible mark on the landscape of television, ensuring that the legacy of Beverly Hills 90210 continues to influence and inspire new generations of viewers. As the

series evolved over the years, it remained a touchstone for discussions about teen issues, making it a significant part of television history.

Frequently Asked Questions

What themes are explored in Season 1 of Beverly Hills 90210?

Season 1 of Beverly Hills 90210 explores themes such as adolescence, friendship, family dynamics, social status, and the challenges of fitting in, particularly as the main characters navigate life in the affluent community of Beverly Hills.

Who are the main characters introduced in Season 1 of Beverly Hills 90210?

The main characters introduced in Season 1 include Brandon Walsh, Brenda Walsh, Kelly Taylor, Donna Martin, Steve Sanders, and David Silver, each bringing their own unique backgrounds and storylines to the show.

How does the setting of Beverly Hills influence the storyline in Season 1?

The setting of Beverly Hills significantly influences the storyline as it highlights the contrast between the characters' privileged lifestyles and the real-life issues they face, such as peer pressure, romantic relationships, and academic challenges.

What is a major conflict faced by Brenda Walsh in Season 1?

A major conflict faced by Brenda Walsh in Season 1 is her struggle to adapt to the new social environment of Beverly Hills High, particularly dealing with issues of acceptance and her relationship with her twin brother, Brandon.

How did Season 1 of Beverly Hills 90210 impact teen drama television?

Season 1 of Beverly Hills 90210 had a significant impact on teen drama television by setting a precedent for shows that address the complexities of teenage life, influencing the genre with its mix of relatable characters, dramatic storylines, and a focus on social issues.

Find other PDF article:

<https://soc.up.edu.ph/07-post/files?docid=oFJ43-2243&title=are-we-similar-worksheet-answers.pdf>

[Beverly Hills 90210 Season 1](#)

[Two Rivers, Wisconsin - Wikipedia](#)

The East Twin and West Twin rivers meet at the Two Rivers harbor before journeying into Lake Michigan. Two Rivers derives its name from the East Twin River and the West Twin River ...

[Two Rivers Wisconsin Home Page](#)

Click here to be directed to the attached file with more info.

Things to Do In Two Rivers - Two Rivers Wisconsin

Plan your trip today to explore the museums and farms in and around Two Rivers, Wisconsin. Learn more about Wisconsin farming and have some "fun on the farm". Visit classic ...

[THE 15 BEST Things to Do in Two Rivers \(2025\) - Tripadvisor](#)

Things to Do in Two Rivers, Wisconsin: See Tripadvisor's 2,815 traveler reviews and photos of Two Rivers tourist attractions. Find what to do today, this weekend, or in August.

Two Rivers, WI Map & Directions - MapQuest

Get directions, maps, and traffic for Two Rivers, WI. Check flight prices and hotel availability for your visit.

Two Rivers WI - Cities and Towns in the United States

Welcome to our dedicated page for Two Rivers, located in the state of Wisconsin, Manitowoc County. Here, you will find detailed information about this city, including its geographical ...

Two Rivers, WI Travel Guide - VacationIdea.com

Two Rivers is a city in Manitowoc County, Wisconsin, on the shores of the Lake Michigan.

Things to do in Two Rivers, WI- 1 Day Itinerary

Jul 22, 2025 · Neshotah Beach & Park - Enjoy one of Wisconsin's finest Lake Michigan beaches. Take a beach stroll, swim, or picnic; there's even playgrounds, volleyball courts, and a ...

Two Rivers Map - Town - City of Two Rivers, Wisconsin, USA

With a population of around 34,000 and 11,000 respectively, the two cities have been known for their maritime activities, and are a popular gateway to scenic Door County to the north by ...

Two Rivers, WI - Geographic Facts & Maps - MapSof.net

Two Rivers is a city located in the county of Manitowoc in the U.S. state of Wisconsin. Its population at the 2010 census was 1,795 and a population density of 106 people per km².

QUERY Definition & Meaning - Merriam-Webster

The meaning of QUERY is question, inquiry. How to use query in a sentence. Synonym Discussion of Query.

QUERY Definition & Meaning | Dictionary.com

Query definition: a question; an inquiry.. See examples of QUERY used in a sentence.

QUERY | English meaning - Cambridge Dictionary

QUERY definition: 1. a question, often expressing doubt about something or looking for an answer from an authority.... Learn more.

Query - Definition, Meaning & Synonyms | Vocabulary.com

A query is a question, or the search for a piece of information. The Latin root quaere means "to ask" and it's the basis of the words inquiry, question, quest, request, and query. Query often fits the ...

query noun - Definition, pictures, pronunciation and usage notes ...

Definition of query noun in Oxford Advanced Learner's Dictionary. Meaning, pronunciation, picture, example sentences, grammar, usage notes, synonyms and more.

Query - definition of query by The Free Dictionary

query , inquiry, enquiry - A query is a single question; an inquiry (or enquiry) may be a single question or extensive investigation (i.e. a series of questions).

query - WordReference.com Dictionary of English

v.t. to ask or inquire about: No one queried his presence. to question as doubtful or obscure: to query a statement. Printing to mark (a manuscript, proof sheet, etc.) with a query. to ask ...

QUERY definition and meaning | Collins English Dictionary

A query is a question, especially one that you ask an organization, publication, or expert.

Query Definition & Meaning - YourDictionary

Query definition: A question; an inquiry.

QUERY - Definition & Translations | Collins English Dictionary

Discover everything about the word "QUERY" in English: meanings, translations, synonyms, pronunciations, examples, and grammar insights - all in one comprehensive guide.

Dive into the drama of Beverly Hills 90210 Season 1! Explore character arcs

[Back to Home](#)