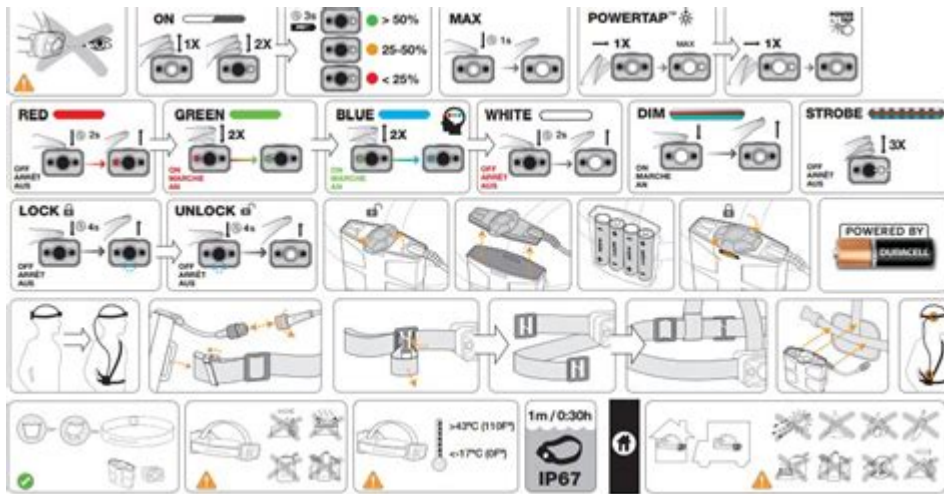


Black Diamond Spot Headlamp Manual



Black Diamond Spot Headlamp Manual: The Black Diamond Spot Headlamp is a versatile and essential tool for outdoor enthusiasts, whether you're hiking, climbing, or camping. This manual aims to provide you with comprehensive information on the features, operation, maintenance, and troubleshooting of the Black Diamond Spot Headlamp, ensuring that you get the most out of this remarkable piece of equipment.

Introduction to the Black Diamond Spot Headlamp

The Black Diamond Spot Headlamp is designed for performance in various outdoor conditions, combining user-friendly features with advanced technology. It offers a mix of brightness, battery life, and versatility, making it a favorite among adventurers.

Key Features

1. **Brightness Levels:** The headlamp typically provides multiple brightness settings, allowing users to customize the light output according to their needs.
2. **Beam Distance:** The Spot headlamp can project light over considerable distances, making it suitable for both close-range tasks and long-distance illumination.
3. **Water Resistance:** Designed for outdoor use, it is often rated for water resistance, providing reliability during inclement weather.
4. **Adjustable Headband:** The headlamp usually comes with an adjustable and comfortable headband to ensure it stays in place during use.
5. **Power Source:** The headlamp is typically powered by AAA batteries or a rechargeable battery, depending on the model.
6. **Locking Feature:** To prevent accidental activation during transport, the headlamp usually includes a locking mechanism.

Operating the Black Diamond Spot Headlamp

Understanding how to operate the Black Diamond Spot Headlamp is crucial for maximizing its functionality. Here's a step-by-step guide to using the headlamp effectively.

Turning the Headlamp On and Off

1. Locate the Power Button: The power button is usually situated on the top or side of the headlamp.
2. On/Off Activation:
 - Press the power button once to turn on the headlamp.
 - Press it again to turn it off.

Adjusting Brightness Settings

The headlamp features multiple brightness modes, which can typically be adjusted as follows:

1. Cycle Through Modes:
 - With the headlamp on, press and hold the power button to cycle through the available brightness levels (e.g., low, medium, high).
 - Release the button when you reach your desired brightness level.
2. Special Modes:
 - Some models include a "strobe" mode for signaling or emergencies. Access this mode by quickly pressing the power button multiple times.

Adjusting Beam Angle

The headlamp is designed to allow for beam angle adjustments. Follow these steps:

1. Tilt the Headlamp: Gently tilt the headlamp up or down to adjust the angle of the beam.
2. Locking Position: Ensure the headlamp is locked in place after adjusting to maintain your desired angle during use.

Battery Management

Proper battery management is essential to ensure that your headlamp performs optimally. Here's how to manage your power source effectively.

Battery Installation

1. Open the Battery Compartment: Locate the battery compartment, typically found at the rear of the headlamp.
2. Insert Batteries:
 - Ensure the batteries are inserted in the correct orientation, matching the positive (+) and negative (-) symbols within the compartment.
 - Close the compartment securely after inserting the batteries.

Checking Battery Life

1. Battery Indicator: Many models feature an LED indicator that shows battery life. Familiarize yourself with this feature to monitor your battery status.
2. Replacement: If the headlamp dims or the indicator shows low battery, replace the batteries as needed.

Rechargeable Models

If you own a rechargeable model of the Black Diamond Spot Headlamp, follow these guidelines:

1. Charging the Battery:
 - Connect the headlamp to a suitable charger (usually included with your purchase).
 - Follow the manufacturer's instructions to charge the headlamp fully.
2. Battery Life Management: Regularly check battery life and recharge when necessary, ensuring optimal performance.

Maintenance of the Black Diamond Spot Headlamp

To prolong the lifespan of your Black Diamond Spot Headlamp and ensure its performance remains top-notch, regular maintenance is crucial.

Cleaning the Headlamp

1. Wipe Down: Use a damp cloth to wipe down the exterior of the headlamp, removing dirt and grime.
2. Lens Care: Clean the lens gently with a microfiber cloth to avoid scratches.

Storage Tips

1. Remove Batteries: If you will not be using the headlamp for an extended period, remove the batteries to prevent corrosion.
2. Dry Conditions: Store the headlamp in a dry, cool place to avoid damage from moisture or extreme temperatures.

Troubleshooting Common Issues

Despite its robust design, users may encounter occasional issues with their Black Diamond Spot Headlamp. Here are some common problems and their solutions.

Headlamp Won't Turn On

- Check Batteries: Ensure the batteries are installed correctly and have sufficient charge.
- Inspect Connections: Look for corrosion or debris in the battery compartment that may prevent contact.

Flickering Light

- Battery Issues: Replace the batteries, as low power can cause flickering.
- Loose Components: Ensure all components are tightly secured and correctly assembled.

Water Damage Concerns

- Dry Thoroughly: If the headlamp gets wet, dry it completely before storing it.
- Inspect for Damage: Check the seals and compartments for any signs of water ingress.

Conclusion

The Black Diamond Spot Headlamp is an indispensable tool for anyone looking to explore the outdoors, providing reliable illumination for various activities. By understanding its features, operating it correctly, managing battery life, performing regular maintenance, and troubleshooting common issues, users can ensure their headlamp remains a trusted companion for years to come. Whether scaling a mountain, navigating through the woods, or enjoying a nighttime campsite, the Black Diamond Spot Headlamp allows adventurers to stay focused on their journey with confidence.

Frequently Asked Questions

What is the primary function of the Black Diamond Spot headlamp?

The primary function of the Black Diamond Spot headlamp is to provide hands-free illumination for outdoor activities such as hiking, climbing, and camping.

How do you change the batteries in the Black Diamond Spot headlamp?

To change the batteries, locate the battery compartment, usually at the back of the headlamp, open it, replace the old batteries with new ones following the correct polarity, and close the compartment securely.

What are the different lighting modes available on the Black Diamond Spot headlamp?

The Black Diamond Spot headlamp typically features multiple lighting modes, including full strength, dimming, strobe, and proximity mode, allowing users to adjust brightness for various situations.

Is the Black Diamond Spot headlamp water-resistant?

Yes, the Black Diamond Spot headlamp is designed to be water-resistant, making it suitable for use in wet conditions, but it is not fully waterproof.

How do you adjust the brightness of the Black Diamond Spot headlamp?

You can adjust the brightness of the Black Diamond Spot headlamp by pressing the power button repeatedly to cycle through the available brightness settings.

Can the Black Diamond Spot headlamp be used while wearing a helmet?

Yes, the Black Diamond Spot headlamp is designed to be compatible with helmets, and it typically comes with a mounting bracket for easy attachment.

What is the maximum light output of the Black Diamond Spot headlamp?

The maximum light output of the Black Diamond Spot headlamp can reach up to 300 lumens, depending on the model and its settings.

How do you clean the Black Diamond Spot headlamp?

To clean the Black Diamond Spot headlamp, you can wipe the exterior with a damp cloth

and mild soap if necessary, avoiding any abrasive materials that could scratch the surface.

Where can I find the user manual for the Black Diamond Spot headlamp?

The user manual for the Black Diamond Spot headlamp can typically be found on the Black Diamond website under the support or product resources section, or it may be included in the packaging when purchased.

Find other PDF article:

<https://soc.up.edu.ph/36-tag/pdf?dataid=dOY74-4651&title=le-smith-glass-history.pdf>

[Black Diamond Spot Headlamp Manual](#)

BLACK+DECKER

HELP CENTER Welcome to the Black & Decker Help Center. Here, you can connect with us, engage with fellow customers in our community section, and find answers to FAQs. We're ...

Register your products | BLACK+DECKER

Looking to register your products? Begin by starting an account on blackanddecker.com. Having an account on is like having a superpower for your BLACK+DECKER® tools and gadgets. You ...

BLACK+DECKER

...
...

Home | BLACK+DECKER

Official website of BLACK+DECKER™. See our power tools, garden tools, and more. Find information on products, where to buy, news, and customer service.

Workmate™ Portable Workbench, 425-To-550-Pound Capacity

Holding up to 550lbs, the BLACK+DECKER portable project center and vise is the perfect addition to your tool set. This workstation is multipurpose and helps you set up your project materials in ...

Car Vacuums | BLACK+DECKER

BLACK+DECKER dustbuster car vacuums are handy for cleaning in tight spaces. Lightweight and portable, these vacs will be a favorite car, truck, and vehicle accessory.

Accessories + Parts | BLACK+DECKER

Find all your needed accessories and spare parts for BLACK+DECKER® appliances, tools and more here. Enjoy sanding discs, string trimmer line, circular saw parts, sawzall attachments, ...

Electric Leaf Blowers | BLACK+DECKER

Using a guide or tool to hang straight pictures ensures precision and alignment, preventing crooked displays and saving time on adjustments. Get organized with modular drawer units, ...

Account | BLACK+DECKER

Official website of BLACK+DECKER™. See our power tools, garden tools, and more. Find information on products, where to buy, news, and customer service.

Electric Lawn Mowers | BLACK+DECKER

For the lawn enthusiast or perfectionist, BLACK+DECKER® offers gas or electric lawnmowers. Browse through our collection for electric, corded mowers.

BLACK+DECKER

HELP CENTER Welcome to the Black & Decker Help Center. Here, you can connect with us, engage with fellow customers in our community section, and find answers to FAQs. We're ...

Register your products | BLACK+DECKER

Looking to register your products? Begin by starting an account on blackanddecker.com. Having an account on is like having a superpower for your BLACK+DECKER® tools and gadgets. You ...

BLACK+DECKER

[illegible]

Home | BLACK+DECKER

Official website of BLACK+DECKER™. See our power tools, garden tools, and more. Find information on products, where to buy, news, and customer service.

Workmate™ Portable Workbench, 425-To-550-Pound Capacity

Holding up to 550lbs, the BLACK+DECKER portable project center and vise is the perfect addition to your tool set. This workstation is multipurpose and helps you set up your project materials in ...

Car Vacuums | BLACK+DECKER

BLACK+DECKER dustbuster car vacuums are handy for cleaning in tight spaces. Lightweight and portable, these vacs will be a favorite car, truck, and vehicle accessory.

Accessories + Parts | BLACK+DECKER

Find all your needed accessories and spare parts for BLACK+DECKER® appliances, tools and more here. Enjoy sanding discs, string trimmer line, circular saw parts, sawzall attachments, ...

Electric Leaf Blowers | BLACK+DECKER

Using a guide or tool to hang straight pictures ensures precision and alignment, preventing crooked displays and saving time on adjustments. Get organized with modular drawer units, ...

Account | BLACK+DECKER

Official website of BLACK+DECKER™. See our power tools, garden tools, and more. Find information on products, where to buy, news, and customer service.

Electric Lawn Mowers | BLACK+DECKER

For the lawn enthusiast or perfectionist, BLACK+DECKER® offers gas or electric lawnmowers. Browse through our collection for electric, corded mowers.

Find the complete Black Diamond Spot headlamp manual here. Get essential tips

[Back to Home](#)