

# Autometer Tachometer Wiring Diagram



## INSTALLATION INSTRUCTIONS 5" PRO-COMP PRO-STOCK TACH



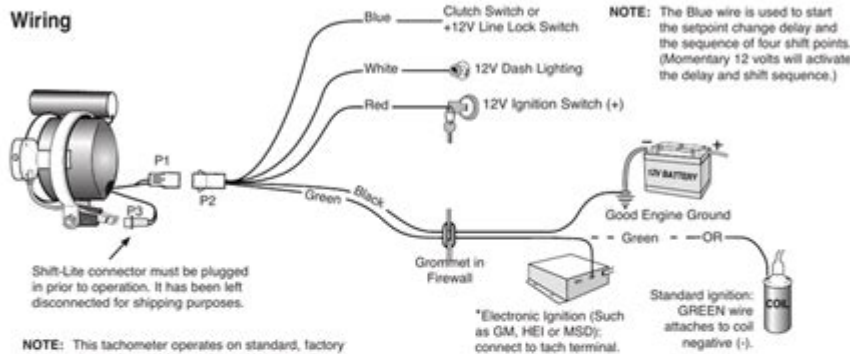
### QUESTIONS:

If after completely reading these instructions you have questions regarding the operation or installation of your instrument(s), please contact Auto Meter Technical Service at 815-899-0801.

You may also email us at [service@autometer.com](mailto:service@autometer.com).

Additional information can also be found at [http://www.autometer.com/tech\\_faq.aspx](http://www.autometer.com/tech_faq.aspx)

### Wiring

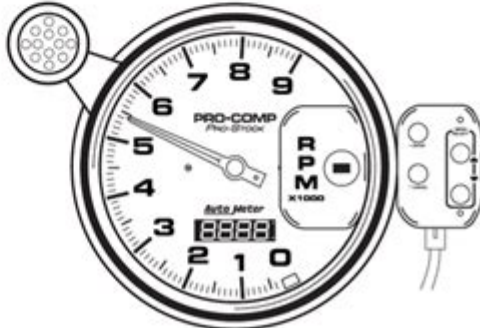


### Introduction To Tach Set-Up

1. The Pro-Stock Tach uses a menu system for configuration. Use the arrows (▲▼) to scroll up and down the menu. When you reach the bottom or top of the menu you will automatically jump to the other end of the menu.
2. To select a menu option press the ENTER button. If at any time you want to exit the menu you are currently in, press the CANCEL button. This will take you back to the TACH display and will not store the entries you have made.
3. Press the ENTER key to store the settings you have entered. After pressing ENTER, the only way to return to the original settings is to return to step 1 and reset as needed.

**NOTE:** The included 12 LED Shift-Lite has 3 intensity settings. The switch in the back of the Shift-Lite will select the intensity of the Shift-Lite. The intensities are as follows:

- HI - Very Bright - For use on a bright sunny day
- MED - Bright - For use on a cloudy or over cast day
- LOW - Dim - For use at night



Autometer tachometer wiring diagram is an essential tool for automotive enthusiasts and professionals alike. Whether you are tuning your engine, racing at the track, or simply ensuring your vehicle is performing optimally, understanding how to wire a tachometer is crucial. This article will provide a comprehensive overview of the wiring diagram for Autometer tachometers, including installation instructions, necessary tools, troubleshooting tips, and common issues you may encounter.

## Understanding the Basics of Tachometers

A tachometer is an instrument that measures the rotational speed of an engine's crankshaft. It provides real-time feedback on the engine's RPM (revolutions per minute), allowing drivers to gauge performance and make adjustments accordingly. Autometer tachometers are popular for their

accuracy and reliability, and they come in various styles and features.

## Key Components of a Tachometer

Before diving into the wiring diagram, it is essential to understand the key components of a tachometer:

1. Display: The main part of the tachometer where RPM readings are shown.
2. Sensor: Detects engine speed, often using inductive or hall effect technology.
3. Wiring Terminals: Connect the tachometer to the vehicle's electrical system.
4. Ground Connection: Essential for completing the circuit and ensuring accurate readings.

## Tools and Materials Needed

To successfully install and wire an Autometer tachometer, you'll need the following tools and materials:

- Autometer Tachometer: Choose the model that suits your needs.
- Wire Strippers and Crimpers: For preparing and connecting wires.
- Screwdriver Set: To install the tachometer and secure connections.
- Electrical Tape: For insulating connections and preventing shorts.
- Multimeter: To check voltage and ensure proper connections.
- Wiring Diagram: Specific to the Autometer model you are installing.

## Wiring Diagram Overview

An Autometer tachometer typically has several wires connecting to different parts of your vehicle's electrical system. The common terminals you will find in the wiring diagram include:

- Power (+): Usually a 12V source, often connected to the ignition switch.
- Ground (-): Connected to a solid ground point on the vehicle.
- Signal (Tach): The wire that connects to the ignition system's signal (typically the negative terminal of the ignition coil).
- Light (+): For backlighting the tachometer, connected to the vehicle's lighting circuit.

## Understanding the Wiring Colors

Different colors are used for wiring, which can help avoid confusion during installation:

- Red: Power supply (+)
- Black: Ground (-)
- Green: Signal from the ignition coil
- Orange: Light supply (+)

# Installation Instructions

Now that you have a basic understanding of the components and wiring, follow these step-by-step instructions for installing your Autometer tachometer.

## Step 1: Preparing the Tachometer

1. Unbox the tachometer and inspect it for any damage.
2. Review the wiring diagram that comes with your specific model.
3. Determine the location for mounting the tachometer on your dashboard.

## Step 2: Mounting the Tachometer

1. Use the mounting bracket provided with your tachometer to secure it in place.
2. Ensure it is firmly attached and positioned for easy visibility while driving.

## Step 3: Connecting the Wires

1. Power Connection:
  - Connect the red wire to a switched 12V power source. This is typically found in the fuse box or near the ignition switch.
2. Ground Connection:
  - Connect the black wire to a solid ground point on the vehicle. This can be a bolt attached to the chassis.
3. Signal Connection:
  - Connect the green wire to the negative terminal of the ignition coil. This wire is responsible for providing the tachometer with an RPM signal.
  - If using a different ignition system (like a distributorless ignition system), refer to the specific wiring guidelines provided by Autometer.
4. Light Connection:
  - Connect the orange wire to the vehicle's lighting circuit to power the backlight. This wire usually connects to the headlight switch.

## Step 4: Testing the Installation

1. After all connections are made, double-check for any loose wires or connections.
2. Reconnect the vehicle's battery.
3. Start the engine and observe the tachometer to ensure it functions correctly.
4. If the tachometer does not register any RPMs, use a multimeter to verify the voltage at the

connections.

## Troubleshooting Common Issues

Despite following the installation instructions, you may encounter some common issues. Here are troubleshooting tips to assist you:

1. Tachometer Does Not Light Up:

- Check the connection for the light wire (orange). Ensure it is correctly connected to the lighting circuit.
- Verify the vehicle's dimmer switch is functioning.

2. Incorrect RPM Readings:

- Ensure the signal wire (green) is connected securely to the negative terminal of the ignition coil.
- Check for any damaged wires or loose connections.

3. Tachometer Fluctuates:

- A fluctuating reading could indicate a poor ground connection. Recheck the ground wire (black).
- Consider interference from other electronic devices in the vehicle.

4. No Reading at All:

- Double-check all connections, especially the power and ground connections.
- Ensure the tachometer is compatible with your vehicle's ignition system.

## Conclusion

Understanding the Autometer tachometer wiring diagram is vital for anyone looking to install this essential instrument in their vehicle. By following the outlined steps for installation, troubleshooting common problems, and ensuring all connections are secure, you can enjoy the benefits of real-time RPM monitoring. Always refer to the specific wiring diagram provided with your Autometer tachometer for the most accurate installation process. With the right tools and knowledge, you can enhance your driving experience and keep your engine performing at its best.

## Frequently Asked Questions

### What is an autometer tachometer wiring diagram?

An autometer tachometer wiring diagram is a schematic representation that outlines how to connect the various wires of an autometer tachometer to a vehicle's electrical system, ensuring proper functionality.

### What are the essential components needed for wiring an

## **autometer tachometer?**

Essential components include the tachometer itself, a power source (usually the ignition switch), a ground connection, and a signal wire from the ignition coil or distributor.

## **How do I connect the signal wire for an autometer tachometer?**

The signal wire should be connected to the negative terminal of the ignition coil or the tach output from the distributor, depending on your vehicle's configuration.

## **What should I do if my autometer tachometer is not working after wiring?**

If the tachometer is not working, check all connections for tightness, ensure the ground is solid, verify that the signal wire is correctly connected, and check the fuse related to the tachometer circuit.

## **Can I use an autometer tachometer with a modern ECU system?**

Yes, you can use an autometer tachometer with a modern ECU system, but you may need a specific adapter or interface to convert the ECU signal to a format the tachometer can read.

## **Where can I find the wiring diagram for my specific autometer tachometer model?**

You can find the wiring diagram for your specific autometer tachometer model in the user manual that comes with the product, or by visiting the Autometer official website and looking for technical support resources.

Find other PDF article:

<https://soc.up.edu.ph/19-theme/files?dataid=ImE06-3152&title=educational-psychology-theory-and-practice-8th-edition-robert-e-slavin.pdf>

## **[Autometer Tachometer Wiring Diagram](#)**

[THE BEST 10 RESTAURANTS near I-265 - Updated 2025 - Yelp](#)

Best Restaurants in I-265 - Noah's Kitchen, The Pine Room, Alchemy Restaurant, Blondie & Jim's Bistro, The Charcoal Restaurant, CASK Southern Kitchen & Bar, District 6, Barn8 on Hermitage Farm, Hammerheads, Bourbon and Burgers

**22 West Tap & Grill - The Best Tap & Grill in Town**

22 West Tap and Grill serves fresh favorites for lunch and dinner 6 days a week. Perfect for families, large and small parties, or friends looking to meet for happy hour. Join us as we open the doors on

nice days to bring airflow inside and enjoy a ...

### *Google Maps*

Find local businesses, view maps and get driving directions in Google Maps.

### **The Best 10 Restaurants near I-265, Louisville, KY - Yelp**

Best Restaurants in I-265, Louisville, KY - Lou Lou in Middletown, CASK Southern Kitchen & Bar, Brass Social, Noah's Kitchen, Gander An American Grill, Alchemy Restaurant, Blind Squirrel, Bubba's 33, The Charcoal Restaurant, Steak & Bourbon

### **Food and Restaurants along I-65 near exits - Roadnow**

3 days ago · Food and Restaurants along Interstate 65 near exits, Food and Restaurants along I-65, Food and Restaurants on I-65

### Route 66 - The 14 BEST TOP Restaurants & Diners along Mother ...

Oct 25, 2022 · This is my list of the top 10 restaurants and diners along Route 66, in the order they appear from Chicago to Santa Monica. Each one includes the name, mileage, a detailed description, helpful information, address, and GPS coordinates.

### *Highly Recommended Places to Eat on Route 66 - Part 2*

Jun 25, 2022 · Welcome to Part 2 of our highly recommended places to eat on Route 66. What this list represents is a selection of the most commonly recommended diners and restaurants from the Driving Route 66 community.

### *The 25 best stop-off diners along Route 66 | Enjoy Travel*

There are so many restaurants and diners in each of the states, you'll be spoilt for choice. Road trips are super fun, but can also be pretty tiring too, so rest stops are essential. According to a recent poll, there are some absolutely fantastic Route 66 stop-off diners to visit while on the road. But what are the 25 best and where are they?

### *Pimiento Latin American Restaurant, Middletown - Menu, ...*

Latest reviews, photos and ratings for Pimiento Latin American Restaurant at 265 Route 211 East, Suite 101 & 102 in Middletown - view the menu, hours, phone number, address and map.

### **I-75 Restaurants, Diners and Fast Food - I-75 Exit Guide**

Find convenient I-75 restaurants, diners and fast food! A complete listing of all I-75 restaurants, diners and fast food located within 1/2 mile of Interstate 75 from Michigan to Florida.

### Cloruro de Sodio Solución 1000 ml - Farmacias del Ahorro

Indicado en el tratamiento de la depleción del volumen extracelular, deshidratación y depleción de sodio debido a diuresis excesiva, gastroenteritis o restricción de sodio. ¡Encontramos otros ...

### *Solucion Fisiologica 1000 Ml - MercadoLibre*

Envíos Gratis en el día Compre Solucion Fisiologica 1000 Ml en cuotas sin interés! Conozca nuestras increíbles ofertas y promociones en millones de productos.

### **SUERO FISIOLÓGICO - PLM**

Marca SUERO FISIOLÓGICO Sustancias CLORURO DE SODIO USP Forma Farmacéutica y Formulación Solución para perfusión Presentación 9 Porcentaje 1 Frasco ampula de plástico, ...

### **Solucion Fisiologica Salina C. De Sodio 1000ml C/12**

(El envase con 1000 mL contiene: Sodio 154.0 mEq; Cloruro 154.0 mEq.) En el tratamiento de la depleción del volumen extracelular, deshidratación y depleción de sodio debido a diuresis ...

*Solución Cloruro de Sodio 0.9%, 1000 ml. - Farmacias Guadalajara*

Introduce el código postal en donde deseas recibir tu pedido Los precios por producto pueden variar de acuerdo a la ciudad o CP de entrega.

### **Suero fisiológico: para qué sirve y cómo usar - Tua Saúde**

La solución fisiológica, también conocida como cloruro de sodio al 0,9%, es una solución esterilizada que se utiliza en casos de deshidratación, limpieza ocular y nasal o nebulizaciones.

### **Solución Física Cloruro de Sodio PISA 1000 ml - 12 Frascos**

La Solución Física Cloruro de Sodio PISA es un producto esencial para la rehidratación y el mantenimiento del equilibrio electrolítico en pacientes. Este frasco de 1000 ml es ideal para ...

*Suero Fisiologico Abd 0.9% Envase X 1000Ml— Farmacorp*

Descripción: Solución isotónica fisiológica de cloruro de sodio al 09 % de 1000 mL de uso parenteral con la tecnología FOIL CAP que brinda doble puerto siliconado permitiendo un ...

Solución Fisiológica (cloruro de sodio 0.9%), envase con 1000 ml.

Solución fisiológica (cloruro de sodio 0.9%) 1000 ml en presentación de 12 unidades, marca Pisa. Solución estéril para administración intravenosa, utilizada en la rehidratación y tratamiento de ...

### **Solución Hartmant inyectable 1000 ml Pisa - Farmacias del Ahorro**

\* Precio exclusivo de tienda en línea. \* Producto sujeto a disponibilidad. \* Descuento ya incluido en precios mostrados. ¡Encontramos otros productos que te pueden gustar!

"Unlock the secrets of your vehicle with our comprehensive autometer tachometer wiring diagram. Learn how to wire it correctly for optimal performance!"

[Back to Home](#)