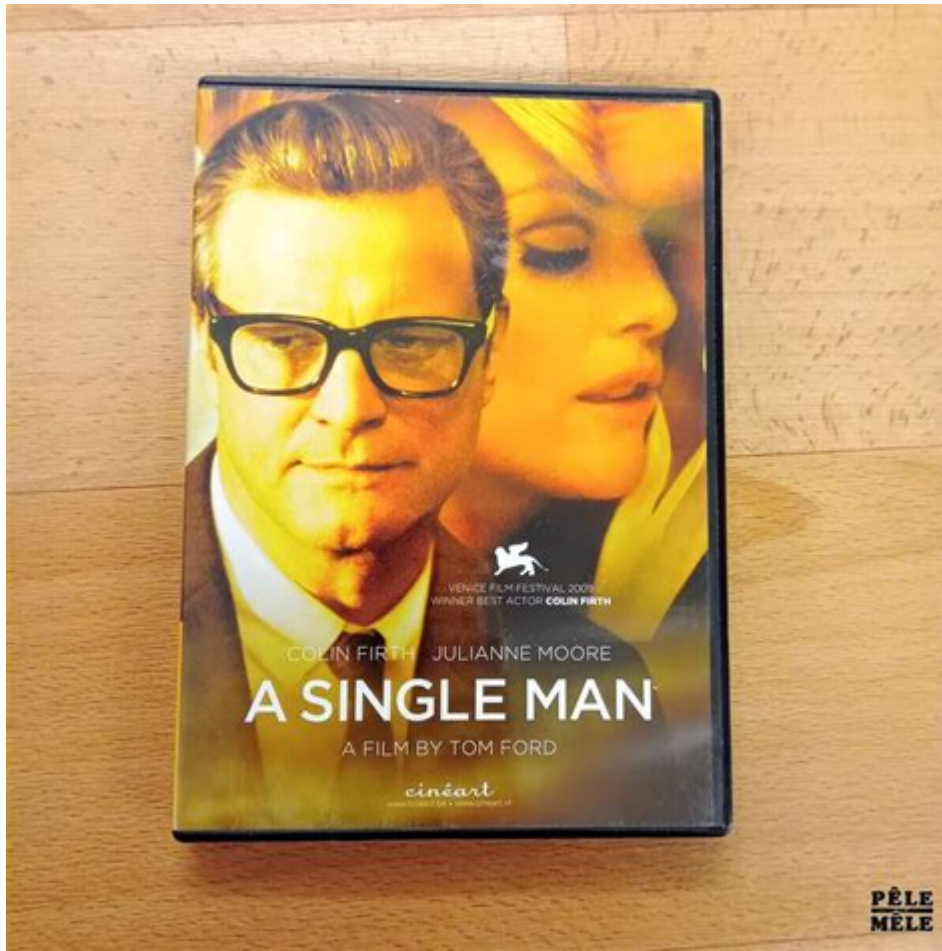


# Author Of A Single Man



## Author of A Single Man: Christopher Isherwood's Life and Legacy

Christopher Isherwood, the author of the poignant novel *A Single Man*, is a figure whose literary contributions have left an indelible mark on 20th-century literature. Born on August 26, 1904, in Disley, Cheshire, England, Isherwood was a prolific writer known for his keen observations of human nature and his ability to capture the complexities of identity, love, and loss. His work often reflects his experiences as a gay man during a time when homosexuality was not only stigmatized but also criminalized. This article delves into Isherwood's life, his significant works, and the lasting impact of *A Single Man* on literature and culture.

## Early Life and Education

Christopher Isherwood was born into a middle-class family; his father was a British Army officer and his mother a homemaker. He had a somewhat tumultuous upbringing, experiencing the emotional distance of his parents and the impact of World War I, which would later influence his writing.

- Education: Isherwood attended the prestigious Repton School and later went to King's College, Cambridge, where he studied English literature. His time at Cambridge was transformative; he became acquainted with influential

figures in the literary world and began to explore his identity as a gay man.

- Influences: The literary movements of the time, including Modernism and the burgeoning gay rights movement, played a crucial role in shaping Isherwood's worldview. Writers such as Virginia Woolf, T.S. Eliot, and E.M. Forster were among those who influenced his early work.

## Literary Career

Isherwood's literary career began in the 1920s, and he quickly gained recognition for his innovative narrative style and deeply personal themes. His early works, influenced by the tumultuous post-war atmosphere, often centered on the struggles of identity and belonging.

## Notable Works

- The Memorial (1932): This novel is a semi-autobiographical account that explores themes of memory, loss, and the impact of war on personal lives. It reflects Isherwood's experiences during the Great War and sets the stage for his later works.

- Goodbye to Berlin (1939): A collection of interconnected stories that depict life in Berlin during the rise of the Nazi Party. This work is notable for its vivid characterizations and social commentary, offering a glimpse into a society on the brink of collapse. The character Sally Bowles, who would later be immortalized in the musical Cabaret, emerged from this work.

- A Single Man (1964): Perhaps Isherwood's most famous novel, A Single Man tells the story of George, a middle-aged English professor living in California, who grapples with the death of his partner, Jim. The novel is a profound meditation on grief, loneliness, and the quest for meaning in a rapidly changing world.

## Writing Style and Themes

Isherwood's writing style is characterized by its clarity, economy, and emotional depth. He often employed a first-person narrative, allowing readers to engage intimately with his characters' thoughts and feelings. Several themes recur throughout his work:

- Identity and Sexuality: Isherwood's exploration of his own identity as a gay man is a recurring theme. He often addresses the complexities of love and desire, particularly in a society that marginalizes those who do not conform to conventional norms.

- Loss and Grief: In A Single Man, the theme of loss is poignantly depicted through George's journey of mourning and self-discovery following Jim's death. This exploration of grief resonates deeply with readers, offering insights into the human condition.

- Social Commentary: Isherwood's works frequently reflect the socio-political landscapes of their time, especially in relation to the rise of fascism in Europe and the evolving perceptions of sexuality and identity.

# A Single Man: Synopsis and Impact

A Single Man is a novel that captures a single day in the life of George, who is grappling with the aftermath of his partner's death. The narrative unfolds in Los Angeles in the early 1960s, a time when societal norms were shifting, and the gay rights movement was on the horizon.

## Synopsis

As George navigates his daily routine, the reader is introduced to his inner thoughts and memories of Jim. The novel is structured around George's interactions with various characters, including students, friends, and a potential new love interest. Through these encounters, Isherwood delves into themes of isolation, longing, and the search for connection in a world that often feels alienating.

The novel's unique temporal structure allows readers to experience George's emotional landscape in real-time, creating a sense of urgency and intimacy. As the day progresses, George reflects on his past and contemplates his future, ultimately leading to a moment of epiphany about love and acceptance.

## Critical Reception and Legacy

Upon its publication, A Single Man received critical acclaim for its poignant exploration of grief and identity. Isherwood's ability to convey profound emotional truths resonated with readers and critics alike. The novel has since been recognized as a landmark work in LGBTQ+ literature, influencing countless writers and artists.

In 2009, A Single Man was adapted into a film directed by Tom Ford, further solidifying its place in contemporary culture. The film received multiple award nominations and was praised for its visual aesthetics and emotional depth, attracting a new generation of readers to Isherwood's original work.

## Personal Life and Later Years

Isherwood's personal life was as complex as the characters he created. He had numerous relationships throughout his life, many of which influenced his writing. In the 1930s, he moved to Berlin, where he became part of a vibrant gay subculture and documented his experiences in his work.

In the 1940s, Isherwood immigrated to the United States, where he continued to write and teach. He eventually settled in California and became involved in the burgeoning gay rights movement. His later works, including Christopher and His Kind (1976), an autobiographical account of his time in Berlin, further illuminate his experiences as a gay man.

## Death and Posthumous Recognition

Christopher Isherwood passed away on January 4, 1986, in Santa Monica, California. His contributions to literature and the LGBTQ+ community continue to be celebrated. In recent years, there has been a resurgence of interest in his work, particularly *A Single Man*, which remains a crucial text in discussions about identity, grief, and the human experience.

## **Conclusion**

Christopher Isherwood's legacy is profound, shaped by his exploration of themes that resonate deeply with the human condition. *A Single Man* stands as a testament to his literary genius, capturing the essence of love, loss, and the search for meaning. As society continues to grapple with issues of identity and acceptance, Isherwood's work remains relevant, offering insights that transcend time and place. Through his writing, Isherwood has carved out a space for marginalized voices, ensuring that the struggles and triumphs of individuals like George are not forgotten.

## **Frequently Asked Questions**

### **Who is the author of 'A Single Man'?**

The author of 'A Single Man' is Christopher Isherwood.

### **What themes are explored in 'A Single Man'?**

'A Single Man' explores themes of grief, loneliness, identity, and the search for meaning in life.

### **When was 'A Single Man' published?**

'A Single Man' was first published in 1964.

### **What is the significance of the protagonist's profession in 'A Single Man'?**

The protagonist, George, is a college professor, which allows the novel to delve into themes of intellectualism and the contrast between personal and societal expectations.

### **Has 'A Single Man' been adapted into a film?**

'A Single Man' was adapted into a film in 2009, directed by Tom Ford and starring Colin Firth.

Find other PDF article:

<https://soc.up.edu.ph/25-style/Book?ID=AGZ91-8647&title=gladiators-fighting-in-the-colosseum.pdf>

## Author Of A Single Man

elsevier,authorstatement -

Nov 3, 2024 · elsevier,authorstatement?CRediT Author Statement

correspondence author [corresponding author](#)

Jul 31, 2024 · "correspondence author" "corresponding author"

Lead Author [Co-Author](#)

Sep 7, 2024 · Lead Author [Co-Author](#) lead author co-author

:co-author -

Jul 27, 2024 · "co-author" "co-first author" "co-author" "co-first

elsevierauthor statement -

elsevierauthor statement guide for author 45

author checklist

May 23, 2025 · author checklistAuthor's ChecklistAuthor's Checklist

Initial name? -

Initial nameinitial nameJane Elizabeth Smithinitial nameJ.E.JES"Initial name"

SCIrunning title

May 30, 2022 · SCIrunning title The title exceeds 70 characters with spaces; the author is suggested to giv... 22

Explore the life and work of the author of a single man

[Back to Home](#)