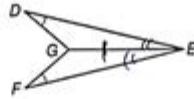


# Basic Geometry Problems And Answers

Prove the triangles are congruent.

13. Given:  $\angle D \cong \angle F$   
 $\overline{GE}$  bisects  $\angle DEF$ .

Prove:  $\triangle DEG \cong \triangle FEG$

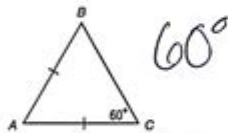


Statement	Reason
$\angle D \cong \angle F$ , $\overline{GE}$ bisects $\angle DEF$	Given
$\overline{GE} \cong \overline{GE}$	Reflexive Prop
$\angle DEG \cong \angle FEG$	Defn of $\angle$ bisector
$\triangle DEG \cong \triangle FEG$	AAS

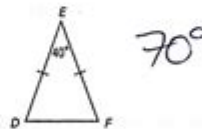
## 4.6 - Isosceles Triangles

Find each measure.

14.  $m\angle ABC$

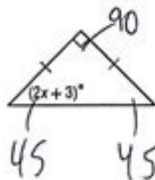


15.  $m\angle EDF$



Find the value of  $x$  and the measure of the angles.

16.



$$\begin{aligned}
 4x + 6 + 90 &= 180 \\
 4x + 6 &= 90 \\
 4x &= 84 \\
 x &= 21
 \end{aligned}$$

**Basic geometry problems and answers** are essential for students and enthusiasts alike, encompassing fundamental concepts that form the foundation of more complex mathematical theories. Geometry, the branch of mathematics that deals with shapes, sizes, and the properties of space, is a subject that not only appears in academic contexts but also finds practical applications in various fields such as architecture, engineering, and even art. In this article, we will explore several basic geometry problems along with their solutions, providing clarity and insight into this fascinating area of study.

## Understanding Basic Geometry Concepts

Before we dive into specific problems, it's crucial to understand some basic geometry concepts that will be referenced throughout the article. The following terms are fundamental:

## 1. Points, Lines, and Planes

- Point: A location in space that has no size, dimension, or volume.
- Line: A straight one-dimensional figure that extends infinitely in both directions, defined by two points.
- Plane: A flat two-dimensional surface that extends infinitely in all directions.

## 2. Angles

- Acute Angle: An angle less than 90 degrees.
- Right Angle: An angle exactly equal to 90 degrees.
- Obtuse Angle: An angle greater than 90 degrees but less than 180 degrees.
- Straight Angle: An angle equal to 180 degrees.

## 3. Shapes

- Triangle: A three-sided polygon.
- Quadrilateral: A four-sided polygon, which includes squares, rectangles, and trapezoids.
- Circle: A round shape where all points are equidistant from the center.

## Basic Geometry Problems and Solutions

Now that we have a grasp of the fundamental concepts, let's explore some basic geometry problems along with their solutions.

### Problem 1: Finding the Area of a Triangle

Question: What is the area of a triangle with a base of 10 cm and a height of 5 cm?

Solution: The area ( $A$ ) of a triangle can be calculated using the formula:

$$A = \frac{1}{2} \times \text{base} \times \text{height}$$

Substituting the given values:

$$\begin{aligned} A &= \frac{1}{2} \times 10 \, \text{cm} \times 5 \, \text{cm} = \frac{1}{2} \times 50 \, \text{cm}^2 \\ &= 25 \, \text{cm}^2 \end{aligned}$$

Thus, the area of the triangle is 25 cm<sup>2</sup>.

## Problem 2: Calculating the Circumference of a Circle

Question: If the radius of a circle is 7 cm, what is its circumference?

Solution: The circumference  $(C)$  of a circle can be calculated using the formula:

$$C = 2 \pi r$$

Where  $(r)$  is the radius. Substituting the given radius:

$$C = 2 \pi \times 7 \text{ cm} \approx 2 \times 3.14 \times 7 \approx 43.96 \text{ cm}$$

Therefore, the circumference of the circle is approximately 43.96 cm.

## Problem 3: Finding the Area of a Rectangle

Question: What is the area of a rectangle with a length of 8 cm and a width of 4 cm?

Solution: The area  $(A)$  of a rectangle can be calculated using the formula:

$$A = \text{length} \times \text{width}$$

Substituting the given values:

$$A = 8 \text{ cm} \times 4 \text{ cm} = 32 \text{ cm}^2$$

Thus, the area of the rectangle is 32 cm<sup>2</sup>.

## Problem 4: Pythagorean Theorem

Question: In a right triangle, if one leg measures 6 cm and the other leg measures 8 cm, what is the length of the hypotenuse?

Solution: According to the Pythagorean theorem, the relationship between the lengths of the sides of a right triangle is given by:

$$a^2 + b^2 = c^2$$

\]

Where  $c$  is the length of the hypotenuse. Substituting the values:

\[

$$6^2 + 8^2 = c^2$$

\]

\[

$$36 + 64 = c^2$$

\]

\[

$$100 = c^2$$

\]

Taking the square root of both sides gives:

\[

$$c = 10 \text{ cm}$$

\]

Therefore, the length of the hypotenuse is 10 cm.

## Problem 5: Volume of a Cylinder

Question: What is the volume of a cylinder with a radius of 3 cm and a height of 5 cm?

Solution: The volume  $V$  of a cylinder can be calculated using the formula:

\[

$$V = \pi r^2 h$$

\]

Substituting the given values:

\[

$$V = \pi \times (3 \text{ cm})^2 \times 5 \text{ cm} \approx 3.14 \times 9 \text{ cm}^2 \times 5 \text{ cm} \approx 141.3 \text{ cm}^3$$

\]

Thus, the volume of the cylinder is approximately 141.3 cm<sup>3</sup>.

## Problem 6: Angles in a Triangle

Question: In a triangle, if one angle measures 50 degrees and another measures 60 degrees, what is the measure of the third angle?

Solution: The sum of the angles in a triangle is always 180 degrees. Therefore, we can find the third

angle  $(x)$  as follows:

$$\begin{aligned} x &= 180^\circ - (50^\circ + 60^\circ) \\ x &= 180^\circ - 110^\circ = 70^\circ \end{aligned}$$

Thus, the measure of the third angle is 70 degrees.

## Conclusion

Understanding basic geometry problems and their solutions is crucial for building a strong foundation in mathematics. The problems presented in this article cover a variety of essential topics, including area, volume, angles, and the Pythagorean theorem. Mastering these concepts not only aids in academic pursuits but also enhances logical thinking skills applicable in everyday life and various professions.

By practicing these kinds of problems, students can improve their problem-solving abilities and gain confidence in their mathematical skills. Geometry may seem challenging at times, but with persistence and practice, anyone can excel in this vital area of mathematics.

## Frequently Asked Questions

### **What is the area of a triangle with a base of 10 units and a height of 5 units?**

The area is 25 square units, calculated using the formula:  $\text{Area} = (\text{base} \times \text{height}) / 2$ .

### **How do you find the circumference of a circle with a radius of 7 units?**

The circumference is 43.98 units, calculated using the formula:  $\text{Circumference} = 2 \pi \text{ radius}$ .

### **What is the volume of a rectangular prism with length 4 units, width 3 units, and height 5 units?**

The volume is 60 cubic units, calculated using the formula:  $\text{Volume} = \text{length} \times \text{width} \times \text{height}$ .

### **If a square has a perimeter of 36 units, what is the length of one side?**

The length of one side is 9 units, calculated using the formula:  $\text{Perimeter} = 4 \times \text{side length}$ .

## **How do you calculate the area of a circle with a diameter of 10 units?**

The area is 78.54 square units, calculated using the formula:  $\text{Area} = \pi (\text{radius}^2)$ , where the radius is 5 units.

## **What is the sum of the interior angles of a pentagon?**

The sum of the interior angles of a pentagon is 540 degrees, calculated using the formula:  $(n - 2) 180$ , where  $n$  is the number of sides.

## **How do you find the length of the diagonal of a rectangle with length 6 units and width 8 units?**

The length of the diagonal is 10 units, calculated using the Pythagorean theorem:  $\text{diagonal} = \sqrt{(\text{length}^2 + \text{width}^2)}$ .

## **What is the area of a trapezoid with bases of 8 units and 5 units, and a height of 4 units?**

The area is 26 square units, calculated using the formula:  $\text{Area} = (\text{base1} + \text{base2}) / 2 \text{ height}$ .

## **If a cylinder has a radius of 3 units and a height of 7 units, what is its volume?**

The volume is 63.62 cubic units, calculated using the formula:  $\text{Volume} = \pi (\text{radius}^2) \text{ height}$ .

## **How do you determine the area of a parallelogram with a base of 10 units and a height of 6 units?**

The area is 60 square units, calculated using the formula:  $\text{Area} = \text{base height}$ .

Find other PDF article:

<https://soc.up.edu.ph/43-block/Book?trackid=dDF22-7010&title=newtons-laws-worksheet.pdf>

## **Basic Geometry Problems And Answers**

### *YouTube Help - Google Help*

Learn more about YouTube YouTube help videos Browse our video library for helpful tips, feature overviews, and step-by-step tutorials. YouTube Known Issues Get information on reported technical issues or scheduled maintenance.

### *Create an account on YouTube - Computer - YouTube Help*

Once you've signed in to YouTube with your Google Account, you can create a YouTube channel on

your account. YouTube channels let you upload videos, leave comments, and create playlists.

#### *Sign in and out of YouTube - Computer - YouTube Help*

Signing in to YouTube allows you to access features like subscriptions, playlists and purchases, and history.

#### *Download the YouTube app*

Check device requirements The YouTube app is available on a wide range of devices, but there are some minimum system requirements and device-specific limitations: Android: Requires Android 8.0 or later. Smart TVs and streaming devices: Availability varies by manufacturer and model. Most smart TVs released after 2013 support the latest YouTube app.

#### **Utiliser YouTube Studio - Ordinateur - Aide YouTube**

Utiliser YouTube Studio YouTube Studio est la plate-forme des créateurs. Elle rassemble tous les outils nécessaires pour gérer votre présence en ligne, développer votre chaîne, interagir avec votre audience et générer des revenus. Remarque : Vous pouvez activer le thème sombre dans YouTube Studio.

#### *Get help signing in to YouTube - YouTube Help - Google Help*

To make sure you're getting the directions for your account, select from the options below.

#### *Use your Google Account for YouTube*

After signing up for YouTube, signing in to your Google account on another Google service will automatically sign you in to YouTube. Deleting your Google Account will delete your YouTube data, including all videos, comments, and subscriptions.

#### **Create a YouTube channel - Google Help**

Create a YouTube channel for a Brand Account that you already manage by choosing the Brand Account from the list. If this Brand Account already has a channel, you can't create a new one. When you select the Brand Account from the list, you'll be switched over to that channel. Fill out the details to name your new channel. Then, click Create.

#### *YouTube Partner Program overview & eligibility*

The YouTube Partner Program (YPP) gives creators greater access to YouTube resources and monetization features, and access to our Creator Support teams. It also allows revenue sharing from ads being served on your content. Learn more about the features, eligibility criteria, and application details in this article.

#### **Descargar la aplicación YouTube - Android - Ayuda de YouTube**

Descargar la aplicación YouTube Descarga la aplicación YouTube para disfrutar de una experiencia más completa en tu smartphone, tablet, smart TV, videoconsola o dispositivo de streaming.

#### **Premier League Football News, Fixtures, Scores & Results**

For all the latest Premier League news, visit the official website of the Premier League.

#### **Premier League Football - Latest news, results, stats & transfers**

The home of Premier League on BBC Sport online. Includes the latest news stories, results, fixtures, video and audio.

#### *English Premier League News, Stats, Scores - ESPN*

Follow all the latest English Premier League football news, fixtures, stats, and more on ESPN.

## **Premier League - Wikipedia**

Western Mail. p. 50. ^ "Swansea wins promotion to EPL". ESPN. Associated Press. 30 May 2011. Archived from the original on 22 December 2015. Retrieved 29 June 2013. ^ Herbert, Ian (21 August 2011). "Vorm is man in form to save Swans". The Independent. Archived from the original on 19 September 2011. Retrieved 22 August 2011.

## **Premier League Football News, Fixtures, Results | Sky Sports**

Get the latest Premier League Football news, fixtures, results, video and more from Sky Sports.

## **Premier League - YouTube**

Welcome to the official Premier League YouTube channel. Keep up to date with the latest content from the Premier League. Subscribe to the official Premier Lea...

## Premier League Table, Form Guide & Season Archives

View the latest Premier League tables, form guides and season archives, on the official website of the Premier League.

## *Premier League News | EPL News - NewsNow*

NewsNow aims to be the world's most accurate and comprehensive English Premier League news aggregator, bringing you the latest EPL headlines from the best football sites, as well as the latest fixtures, results and league table.

## **2025-26 English Premier League Standings - ESPN**

Get the 2025-26 season English Premier League standings on ESPN. Find the full standings with win, loss and draw record for each team.

## **EPL**

Every EPL Club's Preseason Result ☐ Keep up to date with how teams are shaping up this summer ☐ [paininthearsenal.com](http://paininthearsenal.com)

Master basic geometry problems and answers with our comprehensive guide. Enhance your skills and confidence in math. Discover how today!

[Back to Home](#)