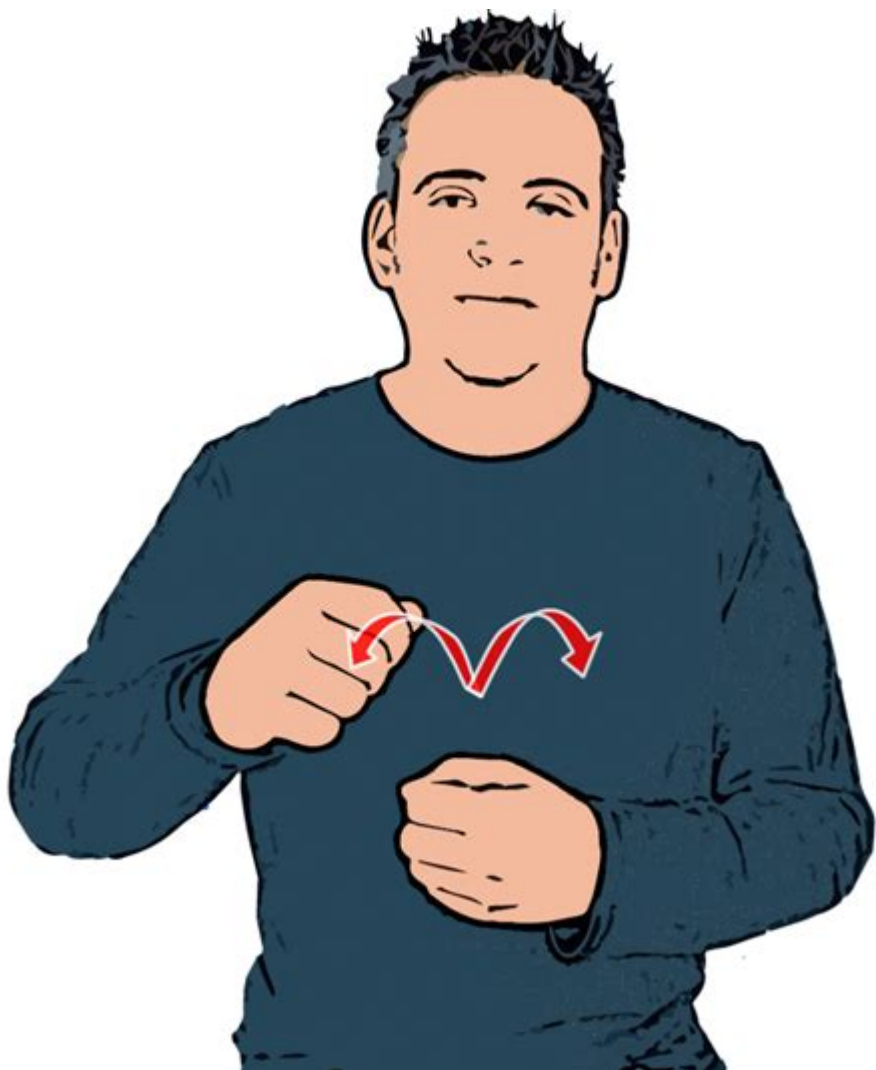


Banana Cartoon Sign Language Cast



Banana cartoon sign language cast is a fascinating topic that combines the world of animation with the essential communication tool of sign language. This article explores the unique blend of these two areas, focusing on how animated characters can help promote understanding and appreciation of sign language within the context of children's media. Through examining the characters, their roles, and the impact they have on audiences, we will uncover the significance of this innovative approach.

Understanding Sign Language in Animation

Sign language serves as a crucial means of communication for many individuals, especially those who are deaf or hard of hearing. By incorporating sign language into animated content, creators can help raise awareness and encourage inclusivity. The use of animated characters, such as those in the "Banana" cartoon series, allows for the representation of sign language in an engaging and entertaining format.

The Role of Characters in Promoting Sign Language

The characters in the "Banana" cartoon series are designed not only to entertain but also to educate young viewers about sign language. Some of the key roles these characters play include:

1. **Educational Ambassadors:** Characters often teach basic signs and phrases, making learning fun and accessible for children.
2. **Cultural Representation:** By featuring deaf characters or characters who use sign language, the series promotes understanding of deaf culture and the importance of diverse communication methods.
3. **Role Models:** Characters who use sign language can serve as role models for young viewers, showcasing the value of communication in all its forms.

Key Characters in the Banana Cartoon Sign Language Cast

The "Banana" cartoon series features a variety of characters that embody the spirit of fun and learning. Below are some of the prominent characters in the cast:

- **Banana Bob:** The main character who is cheerful and always ready to learn new signs. He often encourages his friends to join him in learning.
- **Signing Sally:** A character fluent in sign language, Sally serves as the guide for viewers, demonstrating signs and explaining their meanings.
- **Chatterbox Charlie:** Charlie is known for his love of words and speaking, but he also learns to communicate with Sally through sign language, showcasing the importance of bridging communication gaps.
- **Deaf Delilah:** A character who is deaf and uses sign language as her primary means of communication. Delilah helps to normalize the use of sign language within the storyline.

Each character contributes to the overarching theme of inclusion and understanding, making sign language accessible to young audiences.

Educational Content and Themes

The "Banana" cartoon series utilizes various educational themes related to sign language. Some of the

prominent educational aspects include:

1. **Basic Vocabulary:** The show introduces viewers to basic signs such as greetings, colors, and numbers.
2. **Storytelling through Signs:** Characters often tell stories using sign language, demonstrating how it can be used expressively.
3. **Emphasizing Empathy:** The series promotes empathy and awareness of the challenges faced by individuals who communicate through sign language.
4. **Interactive Learning:** Episodes often involve interactive segments where viewers can practice signs alongside the characters.

These themes help break down barriers and foster a supportive learning environment for all children.

The Impact of Banana Cartoon Sign Language Cast

The inclusion of sign language in children's programming like the "Banana" cartoon series has several important impacts:

1. Fostering Inclusivity

By featuring characters who use sign language, the series creates a more inclusive environment for children who are deaf or hard of hearing. This representation not only validates their experiences but also educates hearing children about different ways of communicating.

2. Enhancing Communication Skills

Learning sign language can enhance overall communication skills for children. The "Banana" series provides a playful and engaging way for children to learn signs, which can improve their understanding of non-verbal communication and body language.

3. Promoting Cultural Awareness

The series helps promote cultural awareness by introducing viewers to the deaf community and its rich history. Through the characters' interactions and storylines, children can learn about the importance of respect, understanding, and acceptance.

4. Encouraging Language Development

Studies show that exposing children to multiple languages, including sign language, can enhance cognitive development and language acquisition. The "Banana" cartoon series provides a platform for children to explore a new language in a fun and engaging way.

Conclusion

The "Banana" cartoon sign language cast is an innovative approach to children's media that combines entertainment with education. By featuring characters who communicate through sign language, the series not only entertains but also empowers young viewers to appreciate the diversity of communication methods. The positive impact of such programming extends beyond the screen, fostering inclusivity, enhancing communication skills, and promoting cultural awareness.

As we continue to explore the intersection of animation and sign language, it becomes increasingly clear that shows like the "Banana" series play a crucial role in shaping a more inclusive and understanding world. By encouraging children to learn sign language, we are helping to create a generation that values diversity and communication in all its forms.

Frequently Asked Questions

What is the 'Banana Cartoon Sign Language' and how did it originate?

Banana Cartoon Sign Language is a creative and playful form of sign language that incorporates cartoonish elements to make communication more engaging, particularly for children. It originated from the combination of traditional sign language and whimsical illustrations, often used in educational materials.

Who are the main characters in the Banana Cartoon Sign Language cast?

The main characters typically include a variety of animated fruits and vegetables, with bananas often taking the lead role due to their popularity. Other characters may include apples, strawberries, and carrots, each representing different signs and concepts.

How can Banana Cartoon Sign Language be used in educational settings?

Banana Cartoon Sign Language can be used in classrooms to teach children about basic sign language, enhance vocabulary, and promote inclusivity. The fun and engaging visual elements help retain children's attention and make learning more enjoyable.

What age group is Banana Cartoon Sign Language best suited for?

Banana Cartoon Sign Language is primarily designed for young children, usually ages 3 to 8, as it uses simple signs and entertaining characters to introduce them to the basics of sign language.

Are there any online resources available for learning Banana Cartoon Sign Language?

Yes, there are several online platforms, including YouTube channels and educational websites, that offer videos and tutorials teaching Banana Cartoon Sign Language. These resources often include interactive games and activities.

Can Banana Cartoon Sign Language be beneficial for children with hearing impairments?

Absolutely. Banana Cartoon Sign Language can be a valuable tool for children with hearing impairments, as it introduces them to visual communication methods. The fun and engaging approach helps reduce barriers in learning.

What types of signs are typically featured in Banana Cartoon Sign Language?

The signs in Banana Cartoon Sign Language usually cover a range of basic concepts, such as colors, emotions, numbers, and everyday objects, making it a comprehensive introduction to sign language.

Is there an app available for learning Banana Cartoon Sign Language?

Yes, some educational apps incorporate Banana Cartoon Sign Language, allowing children to learn through interactive games and animated characters that demonstrate various signs.

How can parents support their children's learning of Banana Cartoon Sign Language at home?

Parents can support their children's learning by practicing signs together, using resources like books and videos, and incorporating signs into daily conversations to reinforce learning in a fun and meaningful way.

Find other PDF article:

Banana Cartoon Sign Language Cast

Banana - Wikipedia

Almost all modern edible seedless (parthenocarp) cultivated bananas come from two wild species – Musa ...

Bananas Nutrition Facts and Possible Health Benefits

May 21, 2025 · Many types and sizes exist. Their color usually ranges from green to yellow, but some varieties are red. ...

Bananas: Health benefits, tips, and risks - Medical News Today

Dec 21, 2023 · Bananas contain essential nutrients that may enhance heart health, help manage blood pressure, and ...

Bananas: Nutrition Facts and Health Effects

Feb 5, 2024 · Bananas offer a good amount of vitamin B6 and vitamin C. Aside from this, they contain small to ...

Bananas Guide: Nutrition, Benefits, Side Effects, More

Oct 23, 2024 · Bananas may be the unsung heroes of the fruit world. They're affordable, transportable, nutrient ...

Banana - Wikipedia

Almost all modern edible seedless (parthenocarp) cultivated bananas come from two wild species – Musa acuminata and Musa balbisiana, or hybrids of them. Musa species are native to ...

Bananas Nutrition Facts and Possible Health Benefits

May 21, 2025 · Many types and sizes exist. Their color usually ranges from green to yellow, but some varieties are red. Read on to learn more about banana nutrition facts and possible ...

Bananas: Health benefits, tips, and risks - Medical News Today

Dec 21, 2023 · Bananas contain essential nutrients that may enhance heart health, help manage blood pressure, and boost a person's mood, among other benefits. While bananas can be ...

Bananas: Nutrition Facts and Health Effects

Feb 5, 2024 · Bananas offer a good amount of vitamin B6 and vitamin C. Aside from this, they contain small to moderate amounts of most other vitamins. Bananas provide a moderate ...

Bananas Guide: Nutrition, Benefits, Side Effects, More

Oct 23, 2024 · Bananas may be the unsung heroes of the fruit world. They're affordable, transportable, nutrient-dense, and versatile. Here's what you need to know about this delicious ...

What Happens to Your Body When You Eat Bananas Daily

May 7, 2025 · Bananas have potassium, fiber, and plenty of other nutritional benefits. Learn why banana is so good for your muscles, digestion, and more.

Are Bananas Good for You? 6+ Health Benefits

May 6, 2025 · “Bananas are rich in important nutrients and antioxidants,” says Rottinger. “Including them regularly in a healthy diet is one of the best ways to reduce inflammation and ...

Banana | Description, History, Cultivation, Nutrition, Benefits ...

4 days ago · banana, fruit of the genus *Musa*, of the family Musaceae, one of the most important fruit crops of the world. The banana is grown in the tropics, and, though it is most widely ...

Bananas: Health Benefits and Nutritional Info Explained - WebMD

Dec 8, 2023 · Bananas grow from a tropical flowering plant. They're soft, sweet, and a convenient source of some important nutrients. They have origins in Southeast Asia. People have grown ...

Banana Nutrition Facts: Health Benefits and Dietary Impact

Apr 4, 2025 · Explore banana calories, potassium, fiber, and other banana nutrition facts, plus how this versatile fruit supports digestion, heart health, and weight loss.

Explore the vibrant world of the 'banana cartoon sign language cast.' Discover how to engage with this fun and educational topic. Learn more today!

[Back to Home](#)