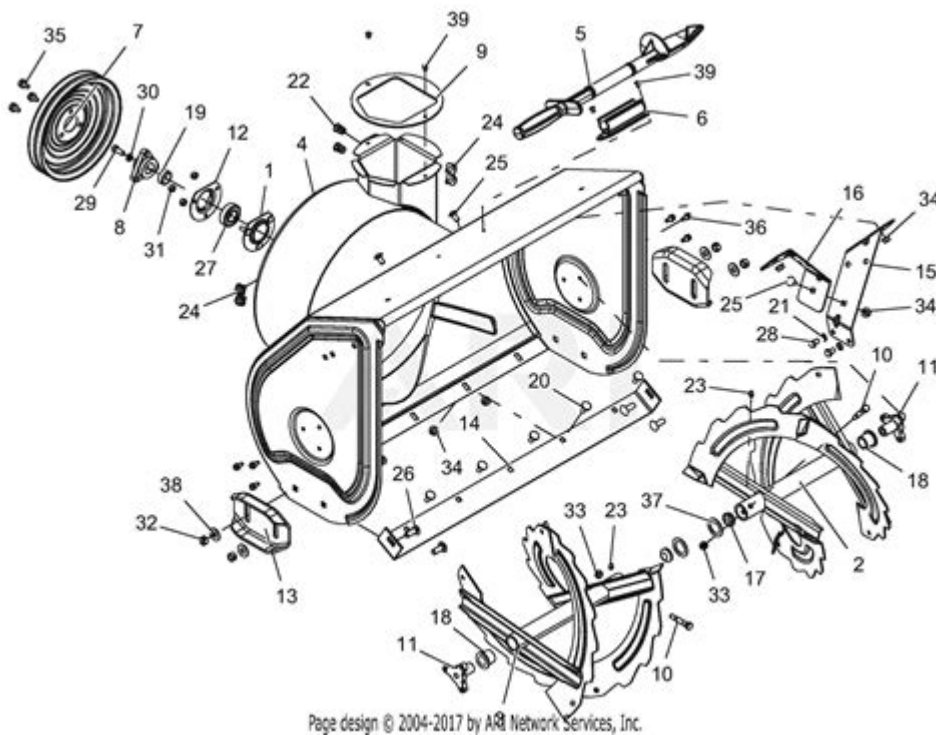


Ariens Deluxe 28 Snowblower Parts Diagram



Page design © 2004-2017 by ARB Network Services, Inc.

ARIENS DELUXE 28 SNOWBLOWER PARTS DIAGRAM IS A CRUCIAL RESOURCE FOR OWNERS AND OPERATORS OF THIS POWERFUL SNOW REMOVAL MACHINE. UNDERSTANDING THE VARIOUS COMPONENTS OF THE ARIENS DELUXE 28 CAN SIGNIFICANTLY ENHANCE YOUR ABILITY TO MAINTAIN AND TROUBLESHOOT THE SNOWBLOWER, ENSURING IT OPERATES EFFICIENTLY AND LASTS FOR MANY WINTERS TO COME. THIS ARTICLE WILL PROVIDE A COMPREHENSIVE OVERVIEW OF THE PARTS THAT MAKE UP THE ARIENS DELUXE 28, INCLUDING THEIR FUNCTIONS AND HOW THEY WORK TOGETHER. ADDITIONALLY, WE WILL EXPLORE THE IMPORTANCE OF HAVING A PARTS DIAGRAM AND WHERE TO FIND ONE.

OVERVIEW OF THE ARIENS DELUXE 28 SNOWBLOWER

THE ARIENS DELUXE 28 IS DESIGNED TO HANDLE HEAVY SNOWFALL WITH EASE, FEATURING A ROBUST ENGINE, WIDE CLEARING WIDTH, AND ADVANCED SNOW THROWING CAPABILITIES. THIS MODEL IS ESPECIALLY FAVORED FOR ITS RELIABILITY AND EFFICIENCY, MAKING IT A GO-TO CHOICE FOR HOMEOWNERS IN SNOWY REGIONS.

KEY FEATURES

1. **ENGINE:** TYPICALLY POWERED BY A RELIABLE 2-STAGE ENGINE, THE ARIENS DELUXE 28 OFFERS POWERFUL PERFORMANCE, ENSURING THAT EVEN HEAVY, WET SNOW CAN BE CLEARED EFFECTIVELY.
2. **CLEARING WIDTH:** WITH A 28-INCH CLEARING WIDTH, THIS SNOWBLOWER CAN HANDLE LARGE AREAS QUICKLY, REDUCING THE TIME SPENT ON SNOW REMOVAL.
3. **THROWING DISTANCE:** THE SNOWBLOWER IS DESIGNED TO THROW SNOW UP TO 50 FEET, ALLOWING FOR EFFECTIVE SNOW MANAGEMENT WITHOUT NEEDING TO CONSTANTLY REPOSITION.
4. **ADJUSTABLE CHUTE:** THE CHUTE CAN BE EASILY ADJUSTED TO DIRECT SNOW WHERE IT IS NEEDED, REDUCING THE LIKELIHOOD OF SNOW PILING UP IN UNWANTED AREAS.
5. **HEATED HANDLES:** MANY MODELS COME EQUIPPED WITH HEATED HAND GRIPS, PROVIDING COMFORT DURING EXTENDED USE IN COLD WEATHER.

UNDERSTANDING THE PARTS OF THE ARIENS DELUXE 28

TO EFFECTIVELY OPERATE AND MAINTAIN AN ARIENS DELUXE 28 SNOWBLOWER, IT IS ESSENTIAL TO FAMILIARIZE YOURSELF WITH ITS VARIOUS PARTS. BELOW ARE THE KEY COMPONENTS, ALONG WITH THEIR FUNCTIONS.

MAIN COMPONENTS

1. AUGER ASSEMBLY

- THE AUGER IS RESPONSIBLE FOR COLLECTING SNOW AND ICE AND FEEDING IT INTO THE SNOWBLOWER'S HOUSING. IT CONSISTS OF:
 - AUGER BLADES: SHARP, SPIRAL-SHAPED BLADES THAT CUT THROUGH SNOW AND ICE.
 - AUGER SHAFT: CONNECTS THE BLADES TO THE ENGINE, ALLOWING THEM TO ROTATE.

2. IMPELLER

- THE IMPELLER IS LOCATED AT THE REAR OF THE HOUSING AND HELPS TO THROW THE SNOW OUT OF THE CHUTE. IT CONSISTS OF:
 - IMPELLER BLADES: DESIGNED TO MOVE THE SNOW QUICKLY AND EFFICIENTLY.
 - IMPELLER HOUSING: ENCASES THE IMPELLER AND DIRECTS THE SNOW TOWARDS THE CHUTE.

3. CHASSIS

- THE CHASSIS SERVES AS THE FRAME OF THE SNOWBLOWER AND HOUSES VARIOUS COMPONENTS. IT INCLUDES:
 - BASE FRAME: PROVIDES STABILITY AND SUPPORT FOR ALL PARTS.
 - WHEEL ASSEMBLIES: ALLOW THE SNOWBLOWER TO BE MANEUVERED EASILY OVER DIFFERENT TERRAINS.

4. DRIVE SYSTEM

- THE DRIVE SYSTEM ENABLES THE SNOWBLOWER TO MOVE FORWARD AND BACKWARD. KEY PARTS INCLUDE:
 - DRIVE BELT: TRANSFERS POWER FROM THE ENGINE TO THE WHEELS.
 - GEARBOX: ADJUSTS THE SPEED OF THE SNOWBLOWER.

5. ENGINE

- THE HEART OF THE SNOWBLOWER, TYPICALLY A FOUR-CYCLE ENGINE, PROVIDES THE NECESSARY POWER FOR OPERATION. IMPORTANT ELEMENTS INCLUDE:
 - SPARK PLUG: IGNITES THE FUEL-AIR MIXTURE FOR COMBUSTION.
 - FUEL TANK: STORES GASOLINE FOR THE ENGINE.

6. CHUTE CONTROL

- THE CHUTE CONTROL ALLOWS THE OPERATOR TO ADJUST THE DIRECTION AND HEIGHT OF THE SNOW DISCHARGE. COMPONENTS INCLUDE:
 - CHUTE LEVER: MANUALLY ADJUSTS THE CHUTE DIRECTION.
 - CHUTE DEFLECTOR: ADJUSTS THE HEIGHT OF THE SNOW BEING THROWN.

7. HANDLES

- THE HANDLES PROVIDE THE USER WITH CONTROL OVER THE SNOWBLOWER. THEY OFTEN INCLUDE:
 - CONTROL LEVERS: ALLOW FOR SPEED AND CHUTE ADJUSTMENTS WITHOUT STOPPING.
 - HEATED GRIPS: PROVIDE WARMTH DURING OPERATION.

IMPORTANCE OF A PARTS DIAGRAM

HAVING AN ARIENS DELUXE 28 SNOWBLOWER PARTS DIAGRAM IS INVALUABLE FOR SEVERAL REASONS:

1. MAINTENANCE: KNOWING THE LAYOUT OF PARTS HELPS IN REGULAR MAINTENANCE TASKS, SUCH AS OIL CHANGES, BELT REPLACEMENTS, AND OTHER REPAIRS.
2. TROUBLESHOOTING: IF THE SNOWBLOWER DOES NOT OPERATE AS EXPECTED, A PARTS DIAGRAM CAN ASSIST IN DIAGNOSING ISSUES BY HELPING YOU IDENTIFY WHICH COMPONENTS MAY BE MALFUNCTIONING.

3. ORDERING PARTS: WHEN YOU NEED TO ORDER REPLACEMENTS, HAVING A DIAGRAM WILL SIMPLIFY THE PROCESS, ENSURING YOU GET THE CORRECT PARTS.
4. ASSEMBLY AND DISASSEMBLY: IF YOU NEED TO DISASSEMBLE THE SNOWBLOWER FOR ANY REASON, A DIAGRAM PROVIDES GUIDANCE ON HOW TO DO SO PROPERLY, REDUCING THE RISK OF DAMAGING COMPONENTS.

WHERE TO FIND PARTS DIAGRAMS

OBTAINING A PARTS DIAGRAM FOR THE ARIENS DELUXE 28 IS STRAIGHTFORWARD, AND THERE ARE SEVERAL RESOURCES AVAILABLE:

1. OFFICIAL ARIENS WEBSITE: THE MANUFACTURER'S WEBSITE OFTEN PROVIDES DOWNLOADABLE PARTS DIAGRAMS AND MANUALS FOR THEIR PRODUCTS.
2. ONLINE RETAILERS: WEBSITES SPECIALIZING IN SMALL ENGINE PARTS OFTEN HAVE PARTS DIAGRAMS AVAILABLE FOR REFERENCE.
3. SERVICE MANUAL: PURCHASING OR ACCESSING A SERVICE MANUAL FOR THE ARIENS DELUXE 28 WILL TYPICALLY INCLUDE A DETAILED PARTS DIAGRAM.
4. LOCAL DEALERS: VISITING OR CONTACTING A LOCAL ARIENS DEALER CAN ALSO YIELD A PARTS DIAGRAM, AND THEY MAY ASSIST YOU IN ORDERING PARTS DIRECTLY.

COMMON PARTS THAT MAY NEED REPLACEMENT

OVER TIME, CERTAIN PARTS OF THE ARIENS DELUXE 28 MAY WEAR OUT OR BECOME DAMAGED. HERE ARE SOME COMMON COMPONENTS THAT MIGHT REQUIRE REPLACEMENT:

1. AUGER BLADES: OFTEN SUBJECT TO WEAR AND TEAR DUE TO CONTACT WITH HARD SURFACES.
2. DRIVE BELTS: CAN STRETCH OR FRAY OVER TIME, AFFECTING PERFORMANCE.
3. SPARK PLUG: SHOULD BE REPLACED PERIODICALLY TO ENSURE EFFICIENT ENGINE OPERATION.
4. FUEL FILTER: A CLOGGED FUEL FILTER CAN HINDER ENGINE PERFORMANCE AND SHOULD BE REPLACED REGULARLY.
5. CHUTE CONTROL CABLES: THESE CABLES MAY FRAY OR BREAK, AFFECTING THE OPERATION OF THE CHUTE.

TIPS FOR MAINTAINING YOUR ARIENS DELUXE 28

TO ENSURE THE LONGEVITY AND EFFICIENCY OF YOUR SNOWBLOWER, CONSIDER THE FOLLOWING MAINTENANCE TIPS:

- REGULAR INSPECTIONS: CHECK FOR LOOSE BOLTS, WORN BELTS, AND ANY SIGNS OF DAMAGE BEFORE EACH USE.
- CLEAN AFTER USE: REMOVE ANY SNOW AND DEBRIS FROM THE MACHINE AFTER EACH USE TO PREVENT RUST AND CORROSION.
- OIL CHANGES: FOLLOW THE MANUFACTURER'S RECOMMENDATIONS FOR OIL CHANGE INTERVALS TO KEEP THE ENGINE RUNNING SMOOTHLY.
- STORE PROPERLY: WHEN NOT IN USE, STORE THE SNOWBLOWER IN A DRY, SHELTERED AREA TO PROTECT IT FROM THE ELEMENTS.
- FUEL STABILIZER: USE A FUEL STABILIZER IN THE GAS TO PREVENT IT FROM GOING STALE DURING OFF-SEASONS.

CONCLUSION

THE ARIENS DELUXE 28 SNOWBLOWER PARTS DIAGRAM IS AN ESSENTIAL TOOL FOR ANY OWNER LOOKING TO MAINTAIN AND OPERATE THEIR SNOWBLOWER EFFECTIVELY. BY UNDERSTANDING THE VARIOUS COMPONENTS AND THEIR FUNCTIONS, USERS CAN ENHANCE THEIR TROUBLESHOOTING SKILLS, IMPROVE MAINTENANCE PRACTICES, AND ULTIMATELY EXTEND THE LIFE OF THEIR MACHINE. WHETHER YOU ARE PREPARING FOR A HARSH WINTER OR JUST LOOKING TO KEEP YOUR DRIVEWAY CLEAR, HAVING A SOLID GRASP OF YOUR SNOWBLOWER'S PARTS AND THEIR CARE CAN MAKE ALL THE DIFFERENCE.

FREQUENTLY ASKED QUESTIONS

WHAT IS AN ARIENS DELUXE 28 SNOWBLOWER PARTS DIAGRAM?

AN ARIENS DELUXE 28 SNOWBLOWER PARTS DIAGRAM IS A VISUAL REPRESENTATION THAT ILLUSTRATES THE VARIOUS COMPONENTS AND PARTS OF THE ARIENS DELUXE 28 SNOWBLOWER, HELPING USERS IDENTIFY, MAINTAIN, AND REPLACE PARTS.

WHERE CAN I FIND THE ARIENS DELUXE 28 SNOWBLOWER PARTS DIAGRAM?

YOU CAN FIND THE PARTS DIAGRAM ON THE OFFICIAL ARIENS WEBSITE, IN THE OWNER'S MANUAL, OR THROUGH AUTHORIZED ARIENS DEALERS AND PARTS RETAILERS.

WHY IS A PARTS DIAGRAM IMPORTANT FOR SNOWBLOWER MAINTENANCE?

A PARTS DIAGRAM IS IMPORTANT FOR SNOWBLOWER MAINTENANCE AS IT ALLOWS USERS TO IDENTIFY SPECIFIC PARTS, UNDERSTAND THEIR FUNCTIONS, AND LOCATE THEM FOR REPAIRS OR REPLACEMENTS.

HOW CAN I USE THE PARTS DIAGRAM TO TROUBLESHOOT MY ARIENS DELUXE 28 SNOWBLOWER?

YOU CAN USE THE PARTS DIAGRAM TO LOCATE PARTS THAT MAY BE MALFUNCTIONING OR DAMAGED, FACILITATING EASIER TROUBLESHOOTING BY VISUALLY MATCHING THE PARTS WITH THEIR DESCRIPTIONS AND FUNCTIONS.

ARE THERE ANY SPECIFIC TOOLS NEEDED TO WORK ON THE ARIENS DELUXE 28 SNOWBLOWER USING THE PARTS DIAGRAM?

YES, BASIC TOOLS SUCH AS WRENCHES, SCREWDRIVERS, AND PLIERS ARE TYPICALLY NEEDED TO WORK ON THE SNOWBLOWER, ALONG WITH ANY SPECIALIZED TOOLS INDICATED IN THE PARTS DIAGRAM.

CAN I ORDER REPLACEMENT PARTS DIRECTLY FROM THE PARTS DIAGRAM?

YES, YOU CAN OFTEN ORDER REPLACEMENT PARTS DIRECTLY FROM THE PARTS DIAGRAM BY NOTING THE PART NUMBERS AND CONTACTING AN AUTHORIZED DEALER OR THE ARIENS PARTS DEPARTMENT.

WHAT SHOULD I DO IF I CAN'T FIND THE PARTS DIAGRAM FOR MY ARIENS DELUXE 28 SNOWBLOWER?

IF YOU CAN'T FIND THE PARTS DIAGRAM, CONSIDER CHECKING THE ARIENS WEBSITE, CONTACTING CUSTOMER SUPPORT, OR VISITING A LOCAL DEALER FOR ASSISTANCE.

IS THERE A DIFFERENCE BETWEEN PARTS DIAGRAMS FOR DIFFERENT MODELS OF ARIENS SNOWBLOWERS?

YES, PARTS DIAGRAMS CAN VARY SIGNIFICANTLY BETWEEN DIFFERENT MODELS OF ARIENS SNOWBLOWERS, SO IT'S ESSENTIAL TO REFER TO THE SPECIFIC DIAGRAM FOR YOUR MODEL TO ENSURE ACCURACY.

HOW OFTEN SHOULD I REFER TO THE PARTS DIAGRAM FOR MAINTENANCE PURPOSES?

IT'S A GOOD PRACTICE TO REFER TO THE PARTS DIAGRAM DURING ROUTINE MAINTENANCE CHECKS, REPAIRS, OR WHENEVER YOU NOTICE A PROBLEM WITH YOUR SNOWBLOWER TO ENSURE PROPER HANDLING OF ITS COMPONENTS.

Find other PDF article:

<https://soc.up.edu.ph/51-grid/files?ID=xhs36-8982&title=rocky-horror-picture-show-callback-guide.p>

Ariens Deluxe 28 Snowblower Parts Diagram

Wieliczka Salt Mine Images | A Visual Journey

Immerse yourself in the beauty of Wieliczka Salt Mine through our curated collection of images. Discover stunning salt formations & underground wonders.

494 Wieliczka Salt Mine Stock Photos, High-Res Pictures, and ...

Explore Authentic Wieliczka Salt Mine Stock Photos & Images For Your Project Or Campaign. Less Searching, More Finding With Getty Images.

Wieliczka Salt Mine Pictures, Images and Stock Photos

Aug 13, 2015 · The Wieliczka Salt Mine, a UNESCO World Heritage site, is one of the oldest and most significant salt mines in Europe. wieliczka salt mine stock pictures, royalty-free photos & images. A stunning view of St. Kinga's Chapel, carved entirely from salt, within the Wieliczka Salt Mine near Kraków, Poland.

Wieliczka Salt Mine - Wikipedia

The mine features an underground lake, exhibits on the history of salt mining, and a 3.5-kilometre (2.2-mile) visitors' route (less than 2 percent of the mine passages' total length) including statues carved from the rock salt at various times.

5,000+ Free Wieliczka Salt Mine & Salt Images - Pixabay

5,528 Free images of Wieliczka Salt Mine Wieliczka salt mine images for free download. Browse or use the filters to find your next picture for your project.

Wieliczka Salt Mine photos - Shutterstock

Feb 20, 2018 · Find Wieliczka Salt Mine stock images in HD and millions of other royalty-free stock photos, illustrations and vectors in the Shutterstock collection. Thousands of new, high-quality pictures added every day.

Wieliczka and Bochnia Royal Salt Mines - Gallery - UNESCO ...

Wieliczka and Bochnia Royal Salt Mines (Poland)

Salt Mine Wieliczka, Małopolska, Poland - FotoPolska

Salt Mine Wieliczka, Małopolska, Poland. This item was saved to your lightbox.

Wieliczka salt mine hi-res stock photography and images - Alamy

Find the perfect wieliczka salt mine stock photo, image, vector, illustration or 360 image. Available for both RF and RM licensing.

Free Wieliczka Salt Mine Photos - Pexels

Download and use 4,000+ Wieliczka Salt Mine stock photos for free. Thousands of new images every day Completely Free to Use High-quality videos and images from Pexels

Earn Gift Cards with Online Paid Surveys and Mobile Games | Swagbucks

Become a Swagbucks member and customize your online earning journey. Choose between completing surveys, cashback shopping, or playing mobile games; your personal preferences ...

Make Money Online with Paid Surveys - Swagbucks

Sep 24, 2024 · On Swagbucks surveys, you'll find the highest-paying surveys and other ways to earn money, such as shopping online, uploading receipts, playing games, playing live trivia, ...

Login | Swagbucks

Earn rewards and free stuff by searching and shopping online, answering surveys, and more at Swagbucks.com, a customer loyalty rewards program. Be rewarded today.

How Swagbucks Works | Swagbucks

Earn rewards and free stuff by searching and shopping online, answering surveys, and more at swagbucks.com, a customer loyalty rewards program. Be rewarded today.

Swagbucks: Earn Your First \$50 and Free Gift Cards

Swagbucks is an online rewards platform where users can earn points, known as "SB," for completing various activities. These activities include taking surveys, watching videos, playing ...

About Swagbucks

Launched in Southern California in 2008, Swagbucks.com is the web's most popular loyalty and consumer rewards program. Members of this free rewards service get free gift cards or cash for ...

Swagbucks Help Center

Ways to Earn! Swagbucks offers a variety of fun and easy ways to earn SB, the site's rewards currency. Tracking Learn all about tracking and why it is important! Redeeming SB & Rewards ...

Understanding Swagbucks: Earn Legit Money Online

Apr 16, 2025 · Swagbucks operates as a legit online rewards program, enabling users to accumulate points through completing online surveys, gaming and more.

Ways to Earn! - Swagbucks Help Center

Ways to Earn! Swagbucks offers a variety of fun and easy ways to earn SB, the site's rewards currency.

How Does Swagbucks Work? - Swagbucks Articles

Aug 1, 2022 · Swagbucks is a free rewards program to earn free gift cards and free money online. You can join Swagbucks on the Swagbucks website or by using the Swagbucks app.

Explore the Ariens Deluxe 28 snowblower parts diagram for easy identification and maintenance. Find the right parts and keep your snowblower in top shape! Learn more.

[Back to Home](#)