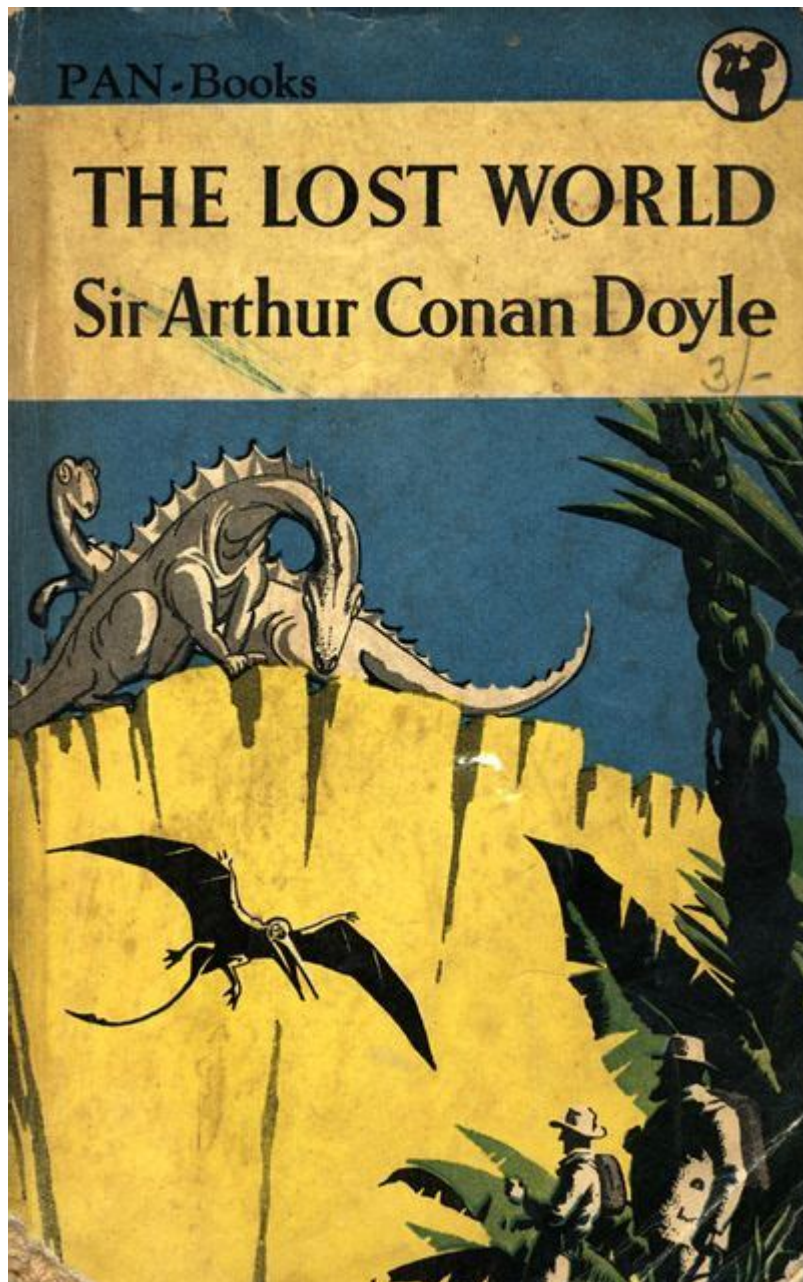


Arthur Conan Doyle Lost World



Arthur Conan Doyle's *Lost World* is a groundbreaking adventure novel that has captivated readers since its publication in 1912. It reflects not only the imagination of its author, Sir Arthur Conan Doyle, but also the era's fascination with exploration, discovery, and the unknown. Known primarily for creating the iconic detective Sherlock Holmes, Doyle's venture into the realm of adventure and science fiction with "*The Lost World*" showcases his versatility and creative genius. This article delves into the novel's plot, themes, characters, and its lasting impact on literature and popular culture.

Plot Overview

At the heart of Arthur Conan Doyle's *Lost World* is an expedition led by the eccentric professor Challenger, who claims to have discovered a plateau in the Amazon rainforest where prehistoric creatures still exist. The story unfolds through the eyes of Edward Malone, a young journalist who seeks to prove his worth to his fiancée by joining the expedition.

Setting the Scene

The novel begins with Malone attending a lecture given by Professor Challenger. During this lecture, Challenger presents his controversial claims about the existence of living dinosaurs on a remote plateau in South America. The scientific community is skeptical, leading to a heated debate. Malone, motivated by both professional ambition and personal validation, decides to accompany Challenger on his expedition.

The Expedition

The expedition is composed of several key characters:

1. Professor Challenger - The brash and confident scientist who leads the expedition.
2. Edward Malone - The earnest journalist who wants to impress his fiancée.
3. Lord John Roxton - A rugged adventurer with a wealth of experience in exploration.
4. Professor Summerlee - A more cautious and skeptical scientist who provides a counterbalance to Challenger's enthusiasm.
5. The Guide - A local guide who helps the team navigate the treacherous terrain.

The group travels to the Amazon, facing numerous challenges, including treacherous landscapes, dangerous wildlife, and their own interpersonal conflicts.

Discoveries on the Plateau

Upon reaching the plateau, the explorers encounter a world like no other. It is teeming with life and populated by prehistoric creatures, including:

- Dinosaurs: Various species, including a brontosaurus and a pterodactyl.
- Strange Mammals: Creatures that blend characteristics of both ancient and contemporary fauna.
- Flora: Unique plant life that thrives in the untouched ecosystem of the plateau.

The explorers document their findings but soon realize that they are not alone. The plateau is also home to a tribe of primitive humans, adding another layer of complexity to their journey.

Themes Explored in the Novel

Arthur Conan Doyle's *Lost World* is not just an adventure story; it also explores several profound themes that resonate with readers.

Exploration and Discovery

The novel embodies the spirit of exploration that defined the late 19th and early 20th centuries. The characters' quest for knowledge reflects humanity's desire to understand the world and the unknown. Doyle captures the thrill of discovery, as well as the dangers that come with venturing into uncharted territories.

Science versus Superstition

Doyle contrasts the rationality of science with the superstitions held by the indigenous tribes. Professor

Challenger represents the scientific method and the quest for empirical evidence, while the natives embody a worldview steeped in mythology and tradition. This interplay raises questions about the nature of knowledge and belief.

Survival and Adaptation

The characters face numerous challenges that test their survival skills. The novel examines how they adapt to their environment, both physically and emotionally. The struggles they encounter highlight the resilience of the human spirit and the instinct to survive against all odds.

Gender Roles and Relationships

Malone's initial motivation for joining the expedition is to prove himself to his fiancée, highlighting the gender norms of the time. The novel reflects societal expectations regarding masculinity and the roles of men and women. However, as the story progresses, the female characters are notably absent, raising questions about the portrayal of women in adventure literature.

Character Analysis

Arthur Conan Doyle's *Lost World* features a memorable cast of characters that contribute to the richness of the narrative.

Professor Challenger

Challenger is the embodiment of scientific fervor and confidence. His larger-than-life personality drives the plot forward, and his interactions with other characters reveal both his brilliance and his arrogance.

He serves as a symbol of the scientific community's quest for knowledge, often clashing with those who doubt his claims.

Edward Malone

Malone serves as the narrative's moral center. His growth throughout the story—from a man seeking validation to a courageous explorer—mirrors the journey of the expedition itself. He represents the everyman, grappling with self-doubt while striving for greatness.

Lord John Roxton

Roxton is the archetypal adventurer, embodying bravery and resourcefulness. His presence adds a layer of excitement to the expedition, and his camaraderie with the other characters showcases the bonds formed through shared experiences.

Professor Summerlee

Professor Summerlee serves as a foil to Challenger. His skepticism and caution provide balance to the expedition, emphasizing the importance of critical thinking in the face of extraordinary claims. His character arc also demonstrates the potential for change and growth, as he ultimately comes to respect Challenger's discoveries.

Impact and Legacy

Arthur Conan Doyle's *Lost World* has left an indelible mark on literature, influencing not only the adventure genre but also science fiction. Its themes of exploration and discovery resonate with

readers, prompting a fascination with prehistoric life and uncharted territories.

Influence on Popular Culture

The novel has inspired numerous adaptations, including:

- Films: Several movie adaptations have been made, ranging from serious interpretations to light-hearted versions.
- Television: The story has been adapted for television, bringing the adventure to new audiences.
- Books: Many authors have drawn upon the themes and ideas presented in Doyle's work, creating their own lost worlds and adventures.

Scientific Inspiration

The discoveries of paleontology and the fascination with dinosaurs during Doyle's time were mirrored in the novel's narrative. The book inspired a generation of scientists and explorers interested in studying prehistoric life. It also contributed to the popularization of the concept of "lost worlds" in literature and film.

Conclusion

Arthur Conan Doyle's *Lost World* stands as a testament to the power of imagination and the human spirit's yearning for adventure. Through its rich characters, thrilling plot, and profound themes, the novel continues to inspire readers and spark curiosity about the mysteries of our world. As we reflect on the legacy of Doyle's work, we are reminded of the importance of exploration—both of the external world and our inner selves. Whether as a pioneering work of adventure literature or a commentary on science and belief, "The Lost World" remains a timeless classic that continues to resonate with

audiences today.

Frequently Asked Questions

What is 'The Lost World' by Arthur Conan Doyle about?

'The Lost World' is a novel that follows Professor Challenger, who leads an expedition to a remote plateau in the Amazon rainforest where prehistoric creatures still exist. The story explores themes of adventure, scientific discovery, and the clash between modernity and the ancient past.

When was 'The Lost World' published?

'The Lost World' was first published in 1912, originally as a serial in 'The Strand Magazine' before being released as a book.

Who are the main characters in 'The Lost World'?

The main characters include Professor Challenger, journalist Edward Malone, zoologist Professor Summerlee, and the young adventurer, Lord John Roxton.

How did 'The Lost World' influence popular culture?

'The Lost World' has had a significant impact on popular culture, inspiring numerous adaptations, films, and other literary works. It is often credited with popularizing the concept of lost worlds and prehistoric creatures in adventure fiction.

What scientific theories does 'The Lost World' explore?

'The Lost World' touches on various scientific theories of the time, including evolution, extinction, and the possibility of undiscovered species existing in isolated regions of the Earth.

Is 'The Lost World' part of a series of stories?

Yes, 'The Lost World' is the first in a series featuring Professor Challenger, followed by other works such as 'The Land of Mist' and 'The Disappearance of Lady Frances Carfax.'

Find other PDF article:

<https://soc.up.edu.ph/01-text/files?docid=gWK53-8152&title=2011-bmw-328i-parts-diagram.pdf>

Arthur Conan Doyle Lost World

Arthur Conan Doyle's 'The Lost World' ...

Nov 27, 2020 · Tommy John Arthur John ...

Arthur -

Arthur /ɑːθə/ /'ɑrθə/

Arthur ...

Arthur Morgan to John Marston

Arthur -

The historical basis for the King Arthur legend has long been debated by scholars. One school of thought, citing entries in the Historia Brittonum (History of the Britons) and Annales Cambriae ...

Arthur -

Feb 27, 2025 · 0x00 vLLM vLLM issue ...

Bertrand Russell -

Bertrand Arthur William Russell 1872 1970 ...

Arthur Waley -

Arthur Waley Arthur Waley Arthur Waley 1

buffet prodige Arthur S

Arthur

Life Changer EA (ARTHUR FX AI) -

Mar 20, 2025 · Life Changer EA (ARTHUR FX AI) ea 100% Life Changer EA Life Changer ...

? -

Apr 16, 2023 · Arthur Samuel 1959 “ ” ...

Arthur ...

Nov 27, 2020 · Tommy John Arthur John ...

Arthur -

Arthur /'ɑːθə/ /'ɑrθə/

Arthur ...

Arthur Morgan to John Marston

Arthur -

The historical basis for the King Arthur legend has long been debated by scholars. One school of thought, citing entries in the Historia Brittonum (History of the Britons) and Annales Cambriae ...

Arthur -

Feb 27, 2025 · 0x00 vLLM vLLM issue ...

Bertrand Russell -

Bertrand Arthur William Russell 1872 1970 ...

Arthur Waley -

Arthur Waley Arthur Waley Arthur Waley 1 ...

buffet prodige Arthur S

Arthur

Life Changer EA (ARTHUR FX AI) -

Mar 20, 2025 · Life Changer EA (ARTHUR FX AI) ea 100% Life Changer EA Life Changer ...

? -

Apr 16, 2023 · Arthur Samuel 1959 “ ” ...

Explore Arthur Conan Doyle's "Lost World

[Back to Home](#)