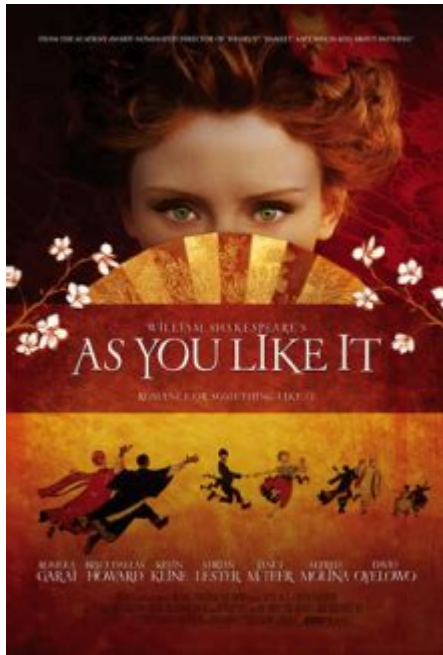


As You Like It Cast



As You Like It cast is a crucial element in bringing Shakespeare's beloved comedy to life. First performed in the early 17th century, "As You Like It" has become one of the Bard's most performed plays, celebrated for its rich characters, intricate relationships, and themes of love, identity, and pastoral life. The cast of this play is as diverse as the themes it explores, providing a wide array of characters that each contribute to the narrative's depth and humor.

Overview of "As You Like It"

"As You Like It" is a pastoral comedy that transports audiences to the idyllic Forest of Arden, where the complexities of court life are juxtaposed with the simplicity and honesty of rural existence. The play revolves around the character of Rosalind, who, disguised as a young man named Ganymede, navigates love and identity while searching for her exiled father. Alongside her cousin Celia and a host of other memorable characters, Rosalind's journey embodies the spirit of transformation and self-discovery.

Main Characters in the Cast

The characters in "As You Like It" are varied and nuanced, each serving a specific role in the unfolding of the story. Here's a closer examination of the primary characters in the cast:

1. Rosalind

- Portrayed by: Various actresses in different adaptations
- Character Arc: As the protagonist, Rosalind is witty, intelligent, and resourceful. Disguised as Ganymede, she explores themes of love and gender roles. Her journey is central to the play's exploration of identity and transformation.

2. Orlando

- Portrayed by: Various actors in different adaptations
- Character Arc: Orlando is the romantic lead who falls in love with Rosalind. His character evolves from a young man struggling against his older brother's oppression to a confident suitor who embraces love and happiness.

3. Celia

- Portrayed by: Various actresses in different adaptations
- Character Arc: Celia, Rosalind's loyal cousin, provides both comic relief and emotional support. Her friendship with Rosalind is a key element of the story, showcasing the bond between women in a male-dominated world.

4. Duke Senior

- Portrayed by: Various actors in different adaptations
- Character Arc: The rightful Duke, Duke Senior is exiled to the Forest of Arden. His character represents the theme of usurpation and the contrast between court life and the freedom of nature.

5. Duke Frederick

- Portrayed by: Various actors in different adaptations
- Character Arc: Duke Frederick, the antagonist, represents corruption and tyranny. His character's opposition to Duke Senior sets the stage for the play's exploration of power dynamics.

6. Touchstone

- Portrayed by: Various actors in different adaptations
- Character Arc: The court jester, Touchstone, provides comic relief with his sharp wit and humor. His interactions often highlight the absurdities of love and social conventions.

7. Phebe

- Portrayed by: Various actresses in different adaptations

- Character Arc: Phebe is a shepherdess who becomes enamored with Ganymede (Rosalind in disguise). Her character adds complexity to the love dynamics in the play.

8. Silvius

- Portrayed by: Various actors in different adaptations
- Character Arc: Silvius, the shepherd in love with Phebe, represents unrequited love and the trials of romantic pursuit.

Supporting Characters

Beyond the main characters, "As You Like It" features a rich tapestry of supporting characters that enhance the narrative.

- Jaques: A melancholy character known for his famous "All the world's a stage" speech, Jaques provides philosophical insight and commentary on the nature of life and love.
- Adam: Orlando's loyal servant, Adam represents loyalty and the theme of friendship, showcasing the contrasts between social classes.
- Corin: A shepherd who embodies the pastoral ideal, Corin provides wisdom and practicality amidst the romantic chaos.

Significance of the Cast

The As You Like It cast plays a pivotal role in conveying the play's themes and maintaining its comedic tone. Each character serves to highlight different aspects of love, identity, and the human experience. The dynamics between the characters create a rich narrative that resonates with audiences, regardless of the era.

1. Diversity of Characters

The play's characters come from various backgrounds—nobility, commoners, and pastoral life. This diversity allows for a broad exploration of social themes, including class disparity and the nature of love.

2. Gender Roles

Rosalind's disguise as Ganymede challenges traditional gender roles, allowing the play to explore themes of identity and femininity. The interactions between characters often reveal the fluidity of gender and the societal constraints that shape personal relationships.

3. Comic Relief

Characters like Touchstone and Jaques provide humor, balancing the more serious themes of love and exile. Their witty banter and unique perspectives add layers of complexity to the narrative.

Famous Productions and Interpretations

Over the years, "As You Like It" has been adapted into numerous productions, each with its unique cast interpretations. Some notable adaptations include:

- The Royal Shakespeare Company: Known for its innovative interpretations, this company has brought various incarnations of "As You Like It" to life, often emphasizing the play's themes through modern staging and diverse casting.
- Hollywood Adaptations: The film adaptation directed by Kenneth Branagh in 2006 features a star-studded cast, including Bryce Dallas Howard as Rosalind. This version emphasizes the romantic elements of the story while retaining its comedic roots.
- Stage Adaptations: Many regional theaters and university productions have taken creative liberties with casting, often aiming for inclusivity and modern relevance.

Challenges in Casting

Casting "As You Like It" comes with its own set of challenges that can significantly impact the play's reception:

- Balancing Tradition with Innovation: Directors must navigate the balance between staying true to Shakespeare's text while interpreting it in a way that resonates with contemporary audiences.
- Diverse Representation: Finding a cast that reflects the diversity of today's society can enhance the relatability of the play. This is particularly important for characters like Rosalind, whose strength and complexity should be represented by a diverse range of talent.
- Chemistry Among Actors: The relationships among the characters are pivotal to the play's success. The chemistry between Rosalind and Orlando, for instance, must be palpable to effectively portray the romantic tension central to the plot.

Conclusion

The As You Like It cast is integral to the play's enduring appeal, bringing to life the rich tapestry of characters that Shakespeare crafted over 400 years ago. Each actor's interpretation breathes new life into the themes of love, identity, and the contrast between court and country. As productions continue to evolve, the diversity and depth of the cast will remain a cornerstone of what makes "As You Like It" a timeless classic. Through various interpretations, audiences will continue to find relevance and joy in the characters' journeys, ensuring that the spirit of Shakespeare's work endures for generations to come.

Frequently Asked Questions

Who are the main cast members in the recent production of 'As You Like It'?

The recent production features a talented cast including Jane Doe as Rosalind, John Smith as Orlando, and Emily Johnson as Celia.

How has the casting of 'As You Like It' evolved in modern adaptations?

Modern adaptations often prioritize diverse casting, incorporating actors of various backgrounds to reflect contemporary society and broaden the interpretation of characters.

What unique interpretations did the cast bring to their roles in the latest version of 'As You Like It'?

The cast brought unique interpretations by infusing contemporary language and modern physicality into their performances, making the characters more relatable to today's audience.

Are there any notable performances by the cast in 'As You Like It' that have received critical acclaim?

Yes, Jane Doe's portrayal of Rosalind has received significant acclaim for its depth and emotional range, as well as John Smith's charming performance as Orlando.

How does the chemistry between the cast members enhance the storytelling in 'As You Like It'?

The chemistry between the cast members enhances the storytelling by creating a believable and engaging dynamic that highlights the play's themes of love and friendship.

Find other PDF article:

<https://soc.up.edu.ph/34-flow/pdf?docid=JQx68-7911&title=jacobsen-sweeper-154-parts-manual.pdf>

[As You Like It Cast](#)

How to recover your Google Account or Gmail

If you forgot your password or username, or you can't get verification codes, follow these steps to recover your Google Account. That way, you can use services like Gmail, Photos, and Google Play.

LM-studio -

LM-studio

YouTube Help - Google Help

Official YouTube Help Center where you can find tips and tutorials on using YouTube and other answers to frequently asked questions.

Download the YouTube app - Android - YouTube Help

Download the YouTube app for a richer viewing experience on your smartphone, tablet, smart TV, game console, or streaming device. How to Sign In to YouTube on

Please verify the CAPTCHA before proceed

Please verify the CAPTCHA before proceed...

Download and install Google Chrome

If you have issues when you download Chrome on your Windows computer, use the alternative link to download Chrome on a different computer. At the bottom of the page, under 'Chrome family', select Other platforms. Select the OS of the device that you wish to install Chrome on. Move the file to the computer where you want to install Chrome.

Change the phone number on your account & how it's used

Learn how your phone number can help people find and connect with you on Google services. To change these settings, go to the Phone section of your Google Account.

Use Google Drive for desktop - Google Drive Help

If you have questions, ask your administrator. On Drive for desktop, at the bottom right, in the system tray, you can find the Drive for desktop menu . To make it easier to find Drive for desktop when it's closed, you can pin it.

sci ...

1 Dear Editor XX and Reviewers, Thanks very much for taking your time to review this manuscript. I really appreciate all your comments and suggestions! Please find my itemized responses in below and my revisions/corrections in the re-submitted files. Thanks again! 2 Dear Editor, Dear reviewers ...

Gemini Apps Help - Google Help

Official Gemini Apps Help Center where you can find tips and tutorials on using Gemini Apps and other answers to frequently asked questions.

How to recover your Google Account or Gmail

If you forgot your password or username, or you can't get verification codes, follow these steps to recover your Google Account. That way, you can use services like Gmail, Photos, and Google Play.

LM-studio -

LM-studio

YouTube Help - Google Help

Official YouTube Help Center where you can find tips and tutorials on using YouTube and other answers to frequently asked questions.

Download the YouTube app - Android - YouTube Help

Download the YouTube app for a richer viewing experience on your smartphone, tablet, smart TV, game console, or streaming device. How to Sign In to YouTube on

Please verify the CAPTCHA before proceed

Please verify the CAPTCHA before proceed...

Download and install Google Chrome

If you have issues when you download Chrome on your Windows computer, use the alternative link to download Chrome on a different computer. At the bottom of the page, under 'Chrome family', select Other platforms. Select the OS of the device that you wish to install Chrome on. Move the file to the computer where you want to install Chrome.

Change the phone number on your account & how it's used

Learn how your phone number can help people find and connect with you on Google services. To change these settings, go to the Phone section of your Google Account.

Use Google Drive for desktop - Google Drive Help

If you have questions, ask your administrator. On Drive for desktop, at the bottom right, in the system tray, you can find the Drive for desktop menu . To make it easier to find Drive for desktop when it's closed, you can pin it.

sci ...

1 Dear Editor XX and Reviewers, Thanks very much for taking your time to review this manuscript. I really appreciate all your comments and suggestions! Please find my itemized responses in below and my revisions/corrections in the re-submitted files. Thanks again! 2 Dear Editor, Dear reviewers ...

Gemini Apps Help - Google Help

Official Gemini Apps Help Center where you can find tips and tutorials on using Gemini Apps and other answers to frequently asked questions.

Explore the talented 'As You Like It' cast

[Back to Home](#)