

# Answers To Laboratory Manual For Anatomy And Physiology

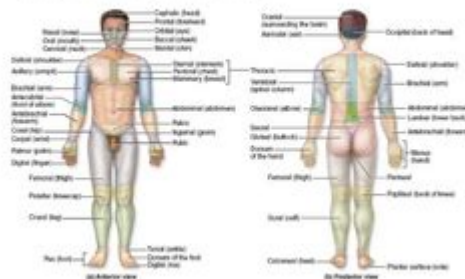
September 9th and 17th

2019

## A&P Lab Section 807:

[30 min total]

- More studying than you would for a normal 1 credit course
  - Make a study group!
- Anatomical Position: upright with palms facing forward
  - Superior: towards the top (above)
  - Inferior: towards the bottom (below)
  - Ventral/Anterior: in front of
  - Dorsal/Posterior: in the back of (behind)
  - Medial: towards the middle
  - Lateral: towards the side
  - Proximal: closer to the point of attachment
  - Distal: away from the point of attachment
  - Superficial: towards the surface
  - Deep: internal EX: "my pancreas is deep to my stomach"
  - Combination of terms: anteromedial, superolateral
- Point of attachment means how close the part in question is connected to the torso
- **Sagittal**: divides the body or structure into left and right sections (does not have to be directly in the center of the body, that is only mid-sagittal)
  - mid-sagittal sections are equal
- **Frontal/Coronal**: divides the body or structure into anterior and posterior sections
- **Transverse**: divides the body or structure into superior and inferior sections
- **Oblique**: divides the body or structure at an angle



**Answers to laboratory manual for anatomy and physiology** are essential for students and educators alike, as they provide clarity, enhance understanding, and facilitate the learning process in the complex field of human biology. A laboratory manual serves as a crucial guide for students, helping them navigate the intricacies of anatomy and physiology through hands-on experimentation and observation. This article delves into the importance of having reliable answers to laboratory manuals, the types of resources available, common challenges faced by students, and strategies to effectively utilize these answers for academic success.

## The Importance of Laboratory Manuals in Anatomy and Physiology Education

Laboratory manuals play a pivotal role in anatomy and physiology courses. They are designed to complement theoretical knowledge with practical experience, allowing students to:

1. **Understand Complex Concepts:** Anatomy and physiology encompass a wide range of topics, from cellular structures to organ systems. Laboratory exercises bridge the gap between theory and practice, providing a tangible context for learning.
2. **Enhance Learning Through Application:** Engaging in laboratory activities fosters critical thinking and problem-solving skills. Students learn to apply theoretical concepts in real-world scenarios, reinforcing their understanding.

3. **Develop Technical Skills:** Many laboratory activities require specific technical skills, such as dissection, microscopy, and physiological measurements. Mastery of these skills is vital for future medical and health-related careers.

4. **Promote Collaboration:** Laboratory work often involves teamwork. Collaborating with peers enhances communication skills and encourages a deeper exploration of scientific concepts.

## **Types of Laboratory Manuals and Their Answers**

Not all laboratory manuals are created equal. They can vary significantly in terms of content, structure, and the level of detail provided. Here are some common types:

### **1. Comprehensive Laboratory Manuals**

These manuals cover a wide range of topics within anatomy and physiology. They often include detailed instructions, diagrams, and background information, making them ideal for in-depth study. Answers in these manuals typically provide step-by-step solutions to experiments, including:

- Detailed explanations of processes
- Interpretations of results
- Suggested improvements for future experiments

### **2. Specialized Laboratory Manuals**

These manuals focus on specific areas, such as histology, physiology, or developmental biology. They are beneficial for students wanting to specialize in a particular field. Answers often include:

- Specific techniques relevant to the area of study
- Case studies or clinical applications
- Information on current research trends

### **3. Online Laboratory Resources**

With the advent of technology, many educational institutions provide online access to laboratory manuals. These resources often come with interactive elements, such as videos and quizzes. Answers in these formats can include:

- Interactive simulations to visualize complex processes
- Instant feedback on quizzes and assessments
- Access to forums for discussion with peers and educators

# **Common Challenges Faced by Students**

Despite the wealth of resources available, students often encounter several challenges when working through laboratory manuals:

## **1. Difficulty Understanding Complex Terminology**

Anatomy and physiology are filled with specialized terminology that can be overwhelming for beginners. Students may struggle with:

- Identifying anatomical structures
- Understanding physiological processes
- Applying terminology in context

## **2. Inadequate Preparation for Laboratory Work**

Many students enter laboratories without sufficient background knowledge, leading to confusion during experiments. Common issues include:

- Unfamiliarity with laboratory equipment
- Inability to formulate hypotheses
- Difficulty in analyzing data

## **3. Time Management Issues**

Laboratory sessions often have strict time constraints. Students may find it challenging to complete all required tasks within the allotted time, resulting in incomplete experiments and missed learning opportunities.

# **Strategies for Effectively Using Answers to Laboratory Manuals**

To maximize learning from laboratory manuals, students can adopt several effective strategies:

## **1. Pre-Lab Preparation**

Before attending a laboratory session, students should:

- Read the relevant sections of the manual thoroughly.

- Familiarize themselves with any required equipment and techniques.
- Create a list of questions to clarify during the lab.

## **2. Active Participation During Experiments**

Engagement during laboratory sessions is crucial. Students should:

- Take detailed notes during experiments.
- Ask questions when unclear about procedures or results.
- Work collaboratively with peers to enhance understanding.

## **3. Post-Lab Reflection and Review**

After completing laboratory work, students should:

- Review their notes and compare them with the answers in the manual.
- Discuss results with classmates or instructors to gain new perspectives.
- Reflect on what went well and what could be improved for future experiments.

## **Utilizing Additional Resources**

In addition to laboratory manuals, students can benefit from various supplementary resources to enhance their understanding of anatomy and physiology:

### **1. Textbooks**

Comprehensive textbooks provide in-depth explanations of anatomical structures and physiological processes. They often include diagrams and illustrations that can aid in visual learning.

### **2. Online Courses and Tutorials**

Many platforms offer free or paid courses that cover anatomy and physiology topics. These courses can reinforce concepts learned in the laboratory and provide additional context.

### **3. Study Groups**

Forming study groups with peers can be highly effective. Group discussions can clarify complex concepts, and studying together can help retain information better.

## 4. Tutoring Services

For students struggling with specific topics, seeking help from tutors can provide personalized support. Tutors can offer tailored explanations and strategies for success.

## Conclusion

**Answers to laboratory manual for anatomy and physiology** are invaluable tools for students navigating the challenging yet fascinating world of human biology. By understanding the importance of laboratory manuals, the types of resources available, and the common challenges encountered, students can adopt effective strategies to enhance their learning experiences. Through preparation, active participation, and reflection, learners can maximize the benefits of laboratory work, ultimately leading to a deeper understanding of anatomy and physiology that will serve them well in their future careers.

## Frequently Asked Questions

### **What is the purpose of a laboratory manual for anatomy and physiology?**

The purpose of a laboratory manual for anatomy and physiology is to provide structured guidance for conducting experiments, understanding anatomical structures, and applying physiological concepts in a practical setting.

### **How can I effectively use the laboratory manual to enhance my understanding of anatomy?**

To enhance your understanding, actively engage with the manual by following the procedures, taking detailed notes, and reflecting on the results after each experiment.

### **Are the answers provided in laboratory manuals for anatomy and physiology reliable?**

Generally, the answers in laboratory manuals are reliable if they are from a reputable source and aligned with current scientific understanding. However, it's always good to cross-reference with textbooks and peer-reviewed articles.

### **What should I do if I find discrepancies in the answers of my laboratory manual?**

If you find discrepancies, consult your instructor or peers for clarification, and consider researching the topic further using additional academic resources.

## **Can laboratory manuals help in preparing for anatomy and physiology exams?**

Yes, laboratory manuals can help in exam preparation by providing practical applications of theoretical knowledge and offering review questions that reinforce learning.

## **Are there online resources available that provide answers to laboratory manuals for anatomy and physiology?**

Yes, there are various online platforms, forums, and educational websites where students share insights and answers related to laboratory manuals for anatomy and physiology.

## **What are common mistakes students make while using laboratory manuals?**

Common mistakes include skipping steps in experiments, misinterpreting results, and failing to connect lab work with theoretical concepts.

## **How can I improve my lab report writing based on laboratory manual guidance?**

To improve lab report writing, follow the structure outlined in the manual, ensure clarity and conciseness, and include critical analysis of your results.

## **Is it advisable to rely solely on laboratory manuals for learning anatomy and physiology?**

While laboratory manuals are useful, it's important to supplement them with textbooks, lectures, and other resources for a well-rounded understanding of anatomy and physiology.

Find other PDF article:

<https://soc.up.edu.ph/60-flick/Book?trackid=LsQ05-2166&title=the-miller-his-son-and-the-donkey-answer-key.pdf>

## **[Answers To Laboratory Manual For Anatomy And Physiology](#)**

[Answers - The Most Trusted Place for Answering Life's Questions](#)

Answers is the place to go to get the answers you need and to ask the questions you want

### **Why did arthel Neville leave Fox News? - Answers**

Jul 7, 2025 · Copyright ©2025 Answers.com. All Rights Reserved. The material on this site can not be reproduced, distributed, transmitted, cached or otherwise used, except with prior written ...

### **What is number 1000000000000000000000000000000 in words**

Mar 31, 2025 · Oh, that's a big number! Let's paint a picture with words: one followed by 30 zeros is called "one nonillion." Isn't that a lovely word to describe such a vast number? Just imagine ...

### **Is scottie Scott of the whispers married? - Answers**

Aug 29, 2023 · JWalter Scott's wife, Charlotte Margaret Carpenter, was of English descent. She was born in 1771 and married Scott in 1797. Their family background and social status were ...

### **Why did Brian Alvey divorce? - Answers**

Mar 27, 2025 · Brian Alvey divorced due to personal differences and challenges in their relationship, as is common in many marriages. While specific details about the reasons for ...

### IS 700 fema course - Answers

May 28, 2025 · Those who have taken the FEMA IS-235 course will have to obtain the answers for the Emergency Planning test through studying the information provided during the course. ...

### Who are the female cast members of tmz? - Answers

Feb 11, 2025 · Oh honey, let me break it down for you. The female cast members of TMZ include the fabulous Raquel Harper, the fierce Van Lathan, and the sassy Anna Kachikyan. These ...

### Does Oscar blaketon die on heartbeat? - Answers

Jan 5, 2023 · Copyright ©2025 Answers.com. All Rights Reserved. The material on this site can not be reproduced, distributed, transmitted, cached or otherwise used, except with prior written ...

### *What state in Mexico contains Mexico City? - Answers*

Sep 1, 2023 · Copyright ©2025 Answers.com. All Rights Reserved. The material on this site can not be reproduced, distributed, transmitted, cached or otherwise used, except with prior written ...

### *What are Kasey Annabelle and October Gymnasts models full ...*

Mar 26, 2025 · Kasey Annabelle's full name is Kasey Annabelle Lutz, while October Gymnast's full name is October Grace. Both are athletes known for their accomplishments in gymnastics. ...

### *Answers - The Most Trusted Place for Answering Life's Questions*

Answers is the place to go to get the answers you need and to ask the questions you want

### *Why did arthel Neville leave Fox News? - Answers*

Jul 7, 2025 · Copyright ©2025 Answers.com. All Rights Reserved. The material on this site can not be reproduced, distributed, transmitted, cached or otherwise used, except with prior written ...

### *What is number 1000000000000000000000000000000 in words*

Mar 31, 2025 · Oh, that's a big number! Let's paint a picture with words: one followed by 30 zeros is called "one nonillion." Isn't that a lovely word to describe such a vast number? Just imagine all the happy little trees and clouds in that number!

### **Is scottie Scott of the whispers married? - Answers**

Aug 29, 2023 · JWalter Scott's wife, Charlotte Margaret Carpenter, was of English descent. She was born in 1771 and married Scott in 1797. Their family background and social status were typical of the time, with ...

### *Why did Brian Alvey divorce? - Answers*

Mar 27, 2025 · Brian Alvey divorced due to personal differences and challenges in their relationship,

as is common in many marriages. While specific details about the reasons for their separation may not be ...

### **IS 700 fema course - Answers**

May 28, 2025 · Those who have taken the FEMA IS-235 course will have to obtain the answers for the Emergency Planning test through studying the information provided during the course. They are not online.

### *Who are the female cast members of tmz? - Answers*

Feb 11, 2025 · Oh honey, let me break it down for you. The female cast members of TMZ include the fabulous Raquel Harper, the fierce Van Lathan, and the sassy Anna Kachikyan. These ladies bring the gossip and the glam to your screens, so buckle up and enjoy the ride!

### **Does Oscar blaketon die on heartbeat? - Answers**

Jan 5, 2023 · Copyright ©2025 Answers.com. All Rights Reserved. The material on this site can not be reproduced, distributed, transmitted, cached or otherwise used, except with prior written permission of Answers.

### What state in Mexico contains Mexico City? - Answers

Sep 1, 2023 · Copyright ©2025 Answers.com. All Rights Reserved. The material on this site can not be reproduced, distributed, transmitted, cached or otherwise used, except with prior written permission of Answers.

### **What are Kasey Annabelle and October Gymnasts models full ...**

Mar 26, 2025 · Kasey Annabelle's full name is Kasey Annabelle Lutz, while October Gymnast's full name is October Grace. Both are athletes known for their accomplishments in gymnastics. Their social media ...

Unlock your understanding with comprehensive answers to the laboratory manual for anatomy and physiology. Enhance your studies today! Learn more now!

[Back to Home](#)