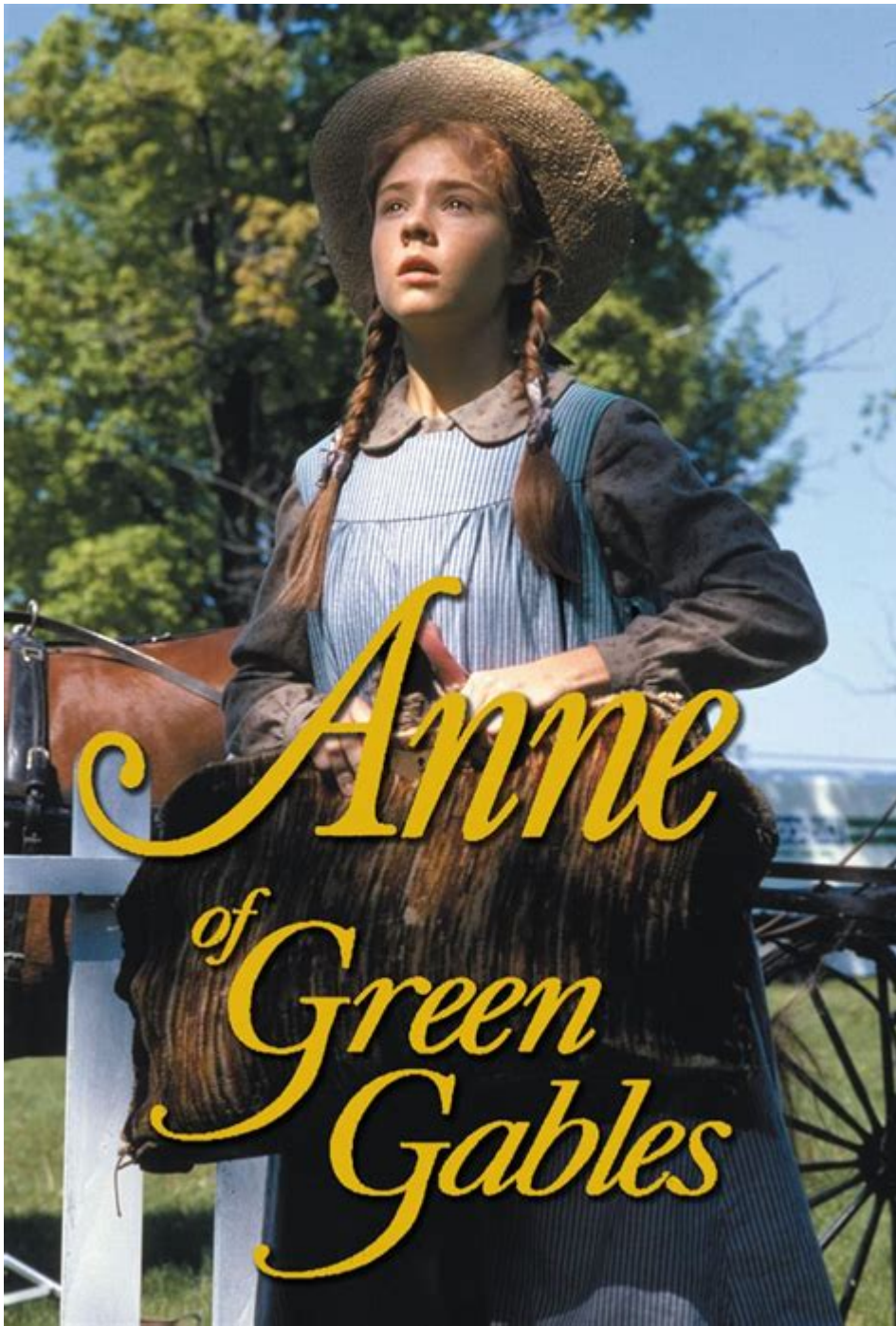


Anne Of Green Gables Original



Anne of Green Gables original is a beloved classic that has touched the hearts of readers around the world since its publication in 1908. Authored by Canadian writer L.M. Montgomery, this enchanting novel tells the story of Anne Shirley, an imaginative and spirited orphan who is mistakenly sent to live with Marilla and Matthew Cuthbert, a brother and sister duo who originally intended to adopt a boy to help them with their farm in the idyllic community of Avonlea, located on Prince Edward Island. The novel's rich themes of belonging, identity, and the power of imagination resonate with audiences of all ages, making it a timeless piece of literature.

The Story Behind the Creation of Anne of Green Gables

L.M. Montgomery wrote "Anne of Green Gables" during a period of personal and social change, both in her life and in society at large. Several factors contributed to the creation of this enduring tale:

1. Inspiration from Personal Experiences

Montgomery's own life experiences and environment greatly influenced her writing. Growing up in Prince Edward Island, she drew inspiration from the beautiful landscapes, small-town life, and the people around her. Her childhood experiences and her struggles with loneliness and imagination heavily informed Anne's character.

2. The Societal Context of the Early 20th Century

The early 1900s were marked by significant shifts in societal norms, especially regarding women's roles. Montgomery's portrayal of Anne as a strong, independent female character challenged traditional expectations and resonated with readers who sought more agency and identity in their lives.

3. The Writing Process

Montgomery began writing "Anne of Green Gables" in 1905, and it took her about three years to complete the manuscript. After facing numerous rejections, the novel was finally published by L.C. Page & Company. Its immediate success was a testament to Montgomery's skillful storytelling and relatable characters.

Plot Overview of Anne of Green Gables

The narrative of "Anne of Green Gables" is rich with charm and humor, following Anne Shirley as she adapts to her new life at Green Gables. The plot can be summarized in several key points:

- **Arrival at Green Gables:** Anne, a feisty red-haired girl, is sent to live with Marilla and Matthew Cuthbert, who had hoped to adopt a boy.
- **Struggles and Adjustments:** Initially, Marilla and Matthew are taken aback by Anne's talkative nature and vivid imagination, but they soon grow fond of her.

- **Friendships and Rivalries:** Anne befriends Diana Barry, her kindred spirit, but also has a contentious relationship with Gilbert Blythe, a boy from school.
- **Academic Achievements:** Despite the challenges she faces, Anne excels in her studies, showcasing her intelligence and determination.
- **Personal Growth:** Throughout the story, Anne learns about friendship, love, loss, and the importance of family, ultimately finding her place in Avonlea.

Key Themes in Anne of Green Gables

"Anne of Green Gables" is rich in themes that offer readers deep insights into human nature and society. Here are some of the prominent themes explored in the novel:

1. Imagination and Creativity

Anne's imaginative spirit allows her to see the world through a unique lens. Her flights of fancy and creative thinking not only set her apart from others but also help her cope with the challenges of her early life. This theme encourages readers to embrace their creativity and view life with wonder.

2. Belonging and Identity

Anne's journey is fundamentally about finding her place in the world. As an orphan, she grapples with feelings of rejection and the desire to belong. The warmth of the Cuthberts' home and her friendships help her build a sense of identity, illustrating the universal human need for connection and belonging.

3. The Importance of Community

The tight-knit community of Avonlea plays a crucial role in Anne's development. The relationships she forms with her neighbors, teachers, and friends contribute to her growth and happiness. This theme underscores the significance of community support and the impact it has on individuals.

4. The Journey of Growing Up

As the story unfolds, readers witness Anne's transition from a whimsical child to a responsible young adult. Her experiences teach her valuable life lessons, highlighting the

challenges and joys that come with growing up.

The Legacy of Anne of Green Gables

Since its publication, "Anne of Green Gables" has left an indelible mark on literature and popular culture. Its influence can be seen in various forms:

1. Adaptations and Spin-offs

The story of Anne Shirley has been adapted into numerous films, television series, and stage productions. Some notable adaptations include:

- 1934 Film: The first film adaptation of the novel, starring Anne Shirley as Anne.
- 1985 Miniseries: A highly acclaimed adaptation featuring Megan Follows as Anne, which introduced the story to a new generation.
- Musicals and Plays: Various stage adaptations have brought Anne's story to life on theater stages worldwide.

2. Cultural Impact

The character of Anne Shirley has become a symbol of imagination and resilience. Her legacy continues to inspire authors, artists, and fans, leading to a thriving community of Anne enthusiasts who celebrate her story through fan fiction, art, and literary events.

3. Tourism in Prince Edward Island

Prince Edward Island has embraced its connection to "Anne of Green Gables," attracting tourists who seek to experience the charm of Avonlea. Sites such as Green Gables House, the Anne of Green Gables Museum, and various guided tours offer visitors a glimpse into the world that inspired L.M. Montgomery.

Conclusion

Anne of Green Gables original remains a timeless tale that resonates with readers of all ages. L.M. Montgomery's masterful storytelling, rich character development, and exploration of profound themes ensure that Anne's adventures will continue to be

cherished for generations to come. As we revisit the enchanting world of Avonlea, we are reminded of the power of imagination, the importance of belonging, and the enduring spirit of one remarkable girl who captured the hearts of millions. Whether you are a long-time fan or a new reader, "Anne of Green Gables" invites you to embark on a journey of discovery, friendship, and love that transcends time and place.

Frequently Asked Questions

What is the main premise of 'Anne of Green Gables'?

'Anne of Green Gables' follows the story of Anne Shirley, an imaginative and spirited orphan girl who is mistakenly sent to live with Marilla and Matthew Cuthbert, siblings who intended to adopt a boy to help them on their farm in Avonlea, Prince Edward Island.

Who is the author of 'Anne of Green Gables'?

'Anne of Green Gables' was written by Canadian author Lucy Maud Montgomery and was first published in 1908.

What are some of the key themes explored in 'Anne of Green Gables'?

Key themes in 'Anne of Green Gables' include the importance of imagination, the search for belonging, the challenges of growing up, and the value of friendship and family.

How has 'Anne of Green Gables' influenced popular culture?

'Anne of Green Gables' has had a significant impact on popular culture, inspiring numerous adaptations in film, television, and stage, as well as a dedicated fanbase and tourism in Prince Edward Island.

What is Anne Shirley's most defining characteristic?

Anne Shirley is best known for her vivid imagination, creativity, and passionate personality, which often leads her into both delightful and troublesome situations.

What is the significance of Green Gables in the story?

Green Gables is not only the name of the Cuthberts' home but also symbolizes a place of love, acceptance, and growth for Anne, marking her transformation from an orphan to a beloved member of the community.

Find other PDF article:

<https://soc.up.edu.ph/21-brief/pdf?dataid=HLH44-5136&title=falling-in-love-for-all-the-right-reasons.pdf>

Anne Of Green Gables Original

anne|annie| | _

"Anne" | | "Annie" | "Anne" | | "Anne" | | "Annie" | ...

| | **Anne** | **Annie** - |

| | Anne | Annie | | Anne 1 | [æ] 2 | n. | 3 | Anne Frank | ...

Anne | - |

Anne 1 | [æ] 2 | n. | 3 | Anne Frank | · | ; | · | ; | Anne Boleyn ...

Anne | - |

Anne | ... | Ann | Annie | ...

| | Anne | Anna | _

Aug 12, 2010 · Anne | Anna | | Anne | n. 1. | ...

anne|annie| | _

"Anne" | | "Annie" | "Anne" | | "Anne" | | "Annie" | ...

| | **Anne** | **Annie** - |

| | Anne | Annie | | Anne 1 | [æ] 2 | n. | 3 | Anne Frank | · | ; | · | ; | Anne Boleyn | · | ; | · | ; ...

Anne | - |

Anne 1 | [æ] 2 | n. | 3 | Anne Frank | · | ; | · | ; | Anne Boleyn | · | ; | · | ; | Anne Fletcher | · | ; | ...

Anne | - |

Anne | ... | Ann | Annie | ... | ~ | 10

| | **Anne** | **Anna** | _

Aug 12, 2010 · Anne | Anna | | Anne | n. 1. | 2. | ...

| | **Netflix** | **Anne** - |

| | Netflix | Anne | ...

| | **1800** | - |

| | 1800 | CEO | 996 | 19 | ...

| | - |

| | (first name) |, | (last name). | first name | last name | ...

ANNE PRO2anne Pro2

“” - “”
“”“”1 "Bonjour" “”Bonjour
"bon," "

Explore the enchanting world of 'Anne of Green Gables' original story. Discover its timeless charm and the magic of Anne's adventures. Learn more!

[Back to Home](#)