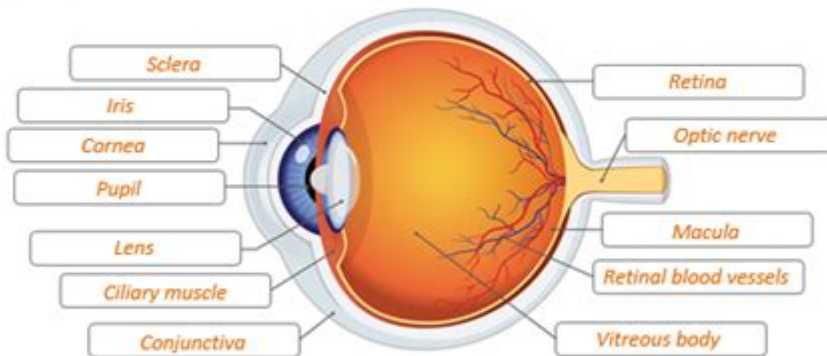


Anatomy Of Eye Quiz

Q.3. Use the words in the box below to label the parts of the eye.

- | | | |
|---------------|------------------|-------------------------|
| • Macula | • Conjunctiva | • Lens |
| • Iris | • Ciliary muscle | • Cornea |
| • Optic nerve | • Sclera | • Retinal blood vessels |
| • Pupil | • Retina | • Vitreous body |



Q.4. Which part of the eye controls the size of the pupil?

- a) Macula
b) Iris
c) Lens
d) Sclera

Anatomy of Eye Quiz: The human eye is a remarkable organ that plays a crucial role in our ability to perceive the world around us. Understanding the anatomy of the eye not only enhances our knowledge of how vision works but also provides insight into various eye conditions and diseases. An anatomy of eye quiz can be a fun and educational way to test your understanding of this complex organ. In this article, we will explore the anatomy of the eye, quiz-related topics, and provide a variety of questions to help you assess your knowledge.

Understanding the Anatomy of the Eye

The human eye is an intricate structure composed of various parts, each contributing to the process of vision. This section will provide an overview of the key components of the eye and their functions.

1. The Outer Layer

The outer layer of the eye consists of the following components:

- Cornea: The clear, dome-shaped surface that covers the front of the eye. It refracts light and helps focus it onto the retina.
- Sclera: The white, opaque outer layer of the eyeball that provides protection and structure.
- Conjunctiva: A thin, transparent membrane that covers the sclera and lines the inside of the eyelids, helping to keep the eye moist.

2. The Middle Layer

The middle layer of the eye contains several important structures:

- Choroid: A layer filled with blood vessels that supplies nutrients to the eye and absorbs excess light.
- Ciliary Body: A structure that produces aqueous humor (the fluid in the eye) and contains the ciliary muscle, which adjusts the shape of the lens for focusing.
- Iris: The colored part of the eye that controls the size of the pupil, thereby regulating the amount of light entering the eye.

3. The Inner Layer

The inner layer of the eye is primarily made up of the retina:

- Retina: A thin layer of tissue at the back of the eye that contains photoreceptor cells (rods and cones) responsible for converting light into neural signals.
- Macula: A small area in the retina responsible for central vision and color perception.
- Optic Nerve: Transmits visual information from the retina to the brain.

Common Eye Conditions

Understanding the anatomy of the eye also involves recognizing common eye conditions and their impact on vision. Here are some prevalent eye issues:

1. Myopia (Nearsightedness): Difficulty seeing distant objects clearly due to an elongated eyeball or excessively curved cornea.
2. Hyperopia (Farsightedness): Difficulty focusing on close objects, often caused by a shortened eyeball or flat cornea.
3. Astigmatism: Distorted vision resulting from an irregularly shaped cornea or lens.
4. Cataracts: Clouding of the lens, leading to blurred vision and increased glare.
5. Glaucoma: A group of eye conditions that damage the optic nerve, often related to high intraocular pressure.

Preparing for the Anatomy of Eye Quiz

Before taking an anatomy of eye quiz, it's essential to review the key concepts and terminology related to the eye's structure and function. Here are some tips to prepare effectively:

- Study Diagrams: Familiarize yourself with labeled diagrams of the eye that illustrate its various parts.
- Review Terminology: Understand the functions and characteristics of different eye components, such as the lens, retina, and optic nerve.
- Explore Eye Conditions: Learn about common eye conditions, their symptoms, and the underlying anatomical issues involved.

Anatomy of Eye Quiz Questions

Now that you have a foundational understanding of the anatomy of the eye, it's time to put your knowledge to the test. Below are a series of quiz questions to challenge your understanding:

Multiple Choice Questions

1. What is the transparent front part of the eye called?

- A) Sclera
- B) Cornea
- C) Retina
- D) Iris

Answer: B) Cornea

2. Which part of the eye is responsible for color vision?

- A) Rods
- B) Cones
- C) Choroid
- D) Macula

Answer: B) Cones

3. What condition is characterized by an increased pressure in the eye?

- A) Myopia
- B) Astigmatism
- C) Glaucoma
- D) Cataracts

Answer: C) Glaucoma

4. The colored part of the eye that controls the size of the pupil is known as:

- A) Retina
- B) Cornea
- C) Iris
- D) Ciliary body

Answer: C) Iris

True or False Questions

1. The lens of the eye is responsible for focusing light onto the retina.

- Answer: True

2. Rods are responsible for color vision.

- Answer: False (Rods are responsible for vision in low light.)

3. The sclera is the clear protective outer layer of the eye.

- Answer: False (The sclera is the white part; the cornea is the clear protective layer.)

4. The macula is responsible for peripheral vision.

- Answer: False (The macula is responsible for central vision.)

Short Answer Questions

1. What is the function of the ciliary body?

- Answer: The ciliary body produces aqueous humor and adjusts the shape of the lens for focusing.

2. Name two types of photoreceptor cells found in the retina.

- Answer: Rods and cones.

3. What is a cataract, and how does it affect vision?

- Answer: A cataract is the clouding of the lens, leading to blurred vision and increased glare.

Conclusion

The anatomy of the eye is a fascinating subject that encompasses a wide range of structures and functions essential for vision. By participating in an anatomy of eye quiz, you can test your knowledge and gain a deeper understanding of how this complex organ works. Whether you are a student, a healthcare professional, or simply someone interested in learning more about the human body, mastering the anatomy of the eye is an invaluable endeavor. As you continue to explore this topic, remember that knowledge is key to appreciating the marvelous intricacies of human vision and the importance of eye health.

Frequently Asked Questions

What is the outermost layer of the eye called?

The outermost layer of the eye is called the sclera.

What part of the eye is responsible for controlling the amount of light that enters?

The iris is responsible for controlling the amount of light that enters the eye.

Which part of the eye contains photoreceptor cells?

The retina contains photoreceptor cells, specifically rods and cones.

What is the transparent structure that helps focus light onto the retina?

The lens is the transparent structure that helps focus light onto the retina.

What is the condition called when the eye's lens becomes cloudy?

The condition when the eye's lens becomes cloudy is called cataract.

What are the two types of photoreceptor cells in the retina?

The two types of photoreceptor cells in the retina are rods and cones.

What is the name of the fluid that fills the space between the lens and the retina?

The fluid that fills the space between the lens and the retina is called vitreous humor.

Find other PDF article:

<https://soc.up.edu.ph/38-press/files?dataid=AgC66-6339&title=machu-picchu-self-guided-tour.pdf>

Anatomy Of Eye Quiz

pan 1.68 - 52pojie.cn

Apr 24, 2022 · [https://pan ...](https://pan...)

2020 app - 52pojie.cn

Mar 24, 2020 · 2020 app v2020.0.73 802M 4.X [hr] 2020 ...

human anatomy atlas - ...

Apr 14, 2020 · human anatomy atlas

52pojie.cn

Jun 2, 2021 · [] []

body Human Anatomy Atlas -

Nov 10, 2018 · visible body Human Anatomy Atlas 3D app ...

Organon Anatomy -

Jul 25, 2019 · 3D ...
[https://www.52 ...](https://www.52...)

[Complete Anatomy windows](#) - [52pojie.cn](#)

Apr 2, 2021 · [Complete Anatomy windows](#) [] ... » 1 2 / 2 »

[Android -](#) - [52pojie.cn](#)

Mar 21, 2016 · PCiPhone

[1.68](#) - [52pojie.cn](#)

Apr 24, 2022 · [https://pan ...](#)

[2020](#) - [52pojie.cn](#)

Mar 24, 2020 · v2020.0.73 802M4.X [hr]2020

[human anatomy atlas](#) -

Apr 14, 2020 · human anatomy atlas

[52pojie.cn](#)

Jun 2, 2021 · [] []

[body Human Anatomy Atlas](#) -

Nov 10, 2018 · visible body Human Anatomy Atlas 3D app

[Organon Anatomy](#) -

Jul 25, 2019 · 3D

[Complete Anatomy windows](#) - [52pojie.cn](#)

Apr 2, 2021 · [Complete Anatomy windows](#) [] ... » 1 2 / 2 »

[Android -](#) - [52pojie.cn](#)

Mar 21, 2016 · PCiPhone

Test your knowledge with our engaging anatomy of eye quiz! Discover how much you really know about the eye's structure and function. Start learning now!

[Back to Home](#)