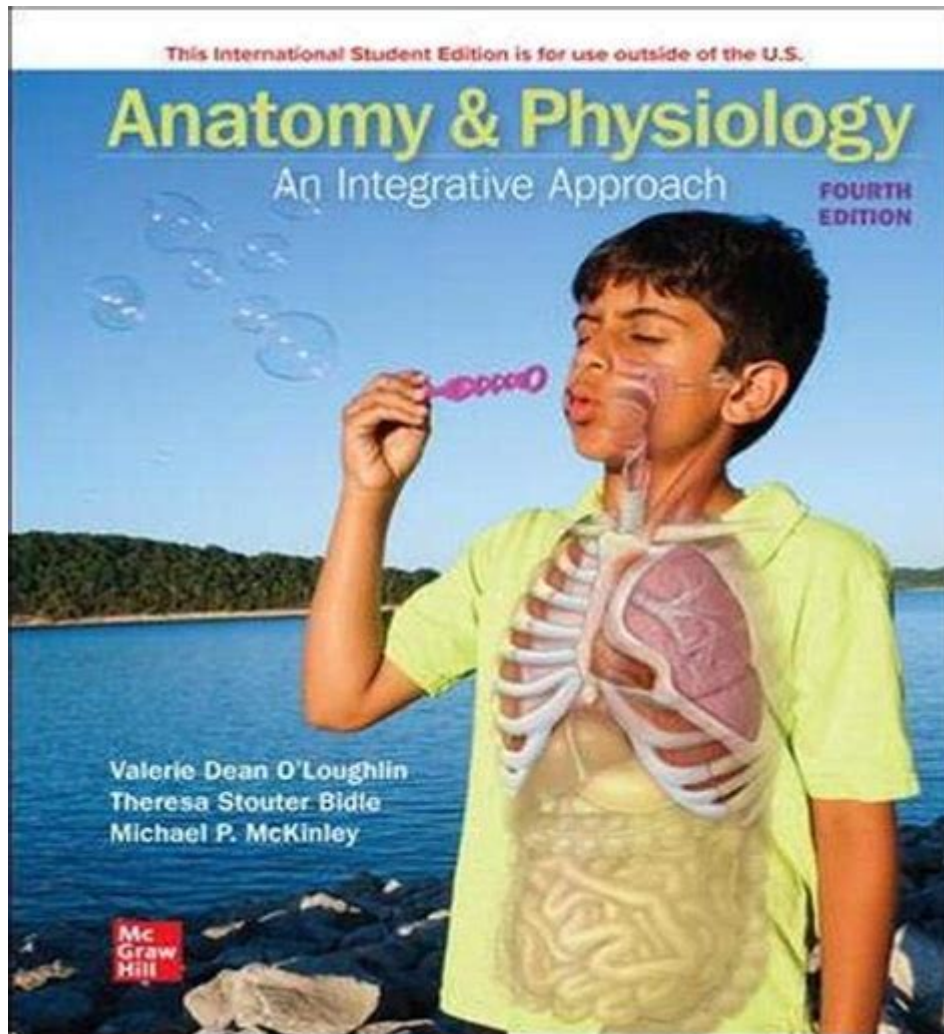


Anatomy Physiology An Integrative Approach 4th Edition



Anatomy Physiology An Integrative Approach 4th Edition is a comprehensive textbook that bridges the gap between anatomy and physiology, providing students with an integrated understanding of the human body. This edition builds on its predecessors by incorporating the most current research and advancements in the field, making it an essential resource for students in health sciences, nursing, and related disciplines. The approach taken in this textbook emphasizes not only the individual components of anatomy and physiology but also their interconnections and functional relevance, which is crucial for a holistic understanding of human biology.

Overview of Anatomy and Physiology

Anatomy and physiology are two fundamental branches of biological sciences that are intricately linked. Understanding anatomy, the study of the structure of the body, is essential for grasping physiology, which focuses on the function of those structures.

Definition of Anatomy

Anatomy can be divided into several branches, including:

1. Gross Anatomy: The study of structures visible to the naked eye.
2. Microscopic Anatomy: Examination of structures at the cellular and tissue levels.
3. Developmental Anatomy: Study of the changes in body structures from conception to adulthood.
4. Comparative Anatomy: Understanding the similarities and differences in the anatomy of different species.

Definition of Physiology

Physiology encompasses various sub-disciplines, such as:

- Cell Physiology: Focus on the functions of cells and their components.
- Systemic Physiology: Study of the functions of organ systems, such as the cardiovascular or nervous system.
- Pathophysiology: Understanding how physiological processes are altered in disease states.

Integrative Approach in Anatomy and Physiology

The integrative approach highlighted in the Anatomy Physiology An Integrative Approach 4th Edition emphasizes the relationship between structure and function. This perspective is critical for students who need to understand how various systems interact within the body.

Importance of Integration

1. Holistic Understanding: Students learn how different organ systems collaborate to maintain homeostasis.
2. Clinical Relevance: An integrated approach prepares future healthcare professionals to assess and treat patients effectively.
3. Enhanced Critical Thinking: By seeing the connections between anatomy and physiology, students develop better problem-solving skills.

Key Features of the 4th Edition

The 4th edition of Anatomy Physiology An Integrative Approach has several distinguishing features that enhance learning and comprehension:

Current Research and Case Studies

- The textbook includes the latest research findings, ensuring that students are learning the most up-to-date information.
- Case studies are integrated throughout the chapters, providing real-world applications of theoretical knowledge.

Visual Learning Aids

- Enhanced Illustrations: Detailed diagrams and illustrations help students visualize complex structures and processes.
- 3D Models: Some editions incorporate 3D models that can be accessed through digital platforms, allowing for interactive learning.

Assessment Tools

- Review Questions: Each chapter includes review questions that reinforce key concepts.
- Practice Exams: End-of-chapter assessments prepare students for exams and practical applications.

Structure of the Textbook

The textbook is organized in a manner that builds knowledge progressively, starting from basic concepts and advancing to complex systems.

Chapter Breakdown

1. Introduction to Anatomy and Physiology: Overview of the fields and their significance.
2. Cells and Tissues: Detailed examination of the building blocks of the body.
3. Organ Systems: Comprehensive coverage of each organ system, including:
 - Integumentary System
 - Skeletal System
 - Muscular System
 - Nervous System
 - Endocrine System
 - Cardiovascular System
 - Lymphatic and Immune Systems
 - Respiratory System
 - Digestive System
 - Urinary System
 - Reproductive System
4. Homeostasis: Exploration of how the body maintains internal balance.

5. Development and Aging: Examination of how anatomy and physiology change over a lifetime.

Learning Strategies

In addition to the textbook content, various learning strategies are incorporated to enhance student understanding:

Active Learning Techniques

- Group Discussions: Encouraged to foster collaboration and deeper understanding of difficult concepts.
- Hands-on Labs: Practical lab sessions that allow students to apply theoretical knowledge.

Technology Integration

- Online Resources: Access to supplementary materials, including videos, quizzes, and interactive models.
- Mobile Applications: Dedicated apps allow students to study on-the-go, providing flexibility in learning.

Conclusion

In summary, Anatomy Physiology An Integrative Approach 4th Edition serves as an invaluable resource for students pursuing careers in health and medicine. Its integrative focus not only enhances understanding of anatomy and physiology but also prepares students for the complexities of clinical practice. With the incorporation of modern teaching techniques, current research, and a well-structured layout, this edition stands out as a premier choice for those striving to gain a comprehensive understanding of the human body. As the fields of anatomy and physiology continue to evolve, this textbook remains a cornerstone in the education of future healthcare professionals.

Frequently Asked Questions

What are the key features of the 4th edition of 'Anatomy & Physiology: An Integrative Approach'?

The 4th edition includes updated content reflecting the latest research, enhanced illustrations, improved digital resources, and integrated case studies that connect anatomy and physiology concepts with clinical applications.

How does the 4th edition of the textbook integrate clinical applications into anatomy and physiology?

This edition utilizes case studies, clinical scenarios, and application-based questions throughout the chapters to help students understand the relevance of anatomy and physiology in real-world healthcare situations.

What digital resources are included with the 4th edition of 'Anatomy & Physiology: An Integrative Approach'?

The textbook is accompanied by a suite of digital resources, including interactive online learning modules, quizzes, and an ebook version that enhances the learning experience through multimedia and self-assessment tools.

Are there any significant changes in the illustrations in the 4th edition compared to previous editions?

Yes, the 4th edition features new, high-quality illustrations and diagrams that provide clearer visual representations of anatomical structures and physiological processes, aiding in better comprehension.

What pedagogical strategies are emphasized in the 4th edition to enhance student learning?

The textbook emphasizes active learning strategies, such as critical thinking exercises, integrated learning activities, and collaborative projects, to engage students and deepen their understanding of anatomy and physiology.

Is the 4th edition suitable for both undergraduate and graduate level courses?

Yes, the 4th edition is designed to be suitable for both undergraduate and graduate courses, providing comprehensive content that can be adapted for various levels of study in anatomy and physiology.

How does the 4th edition address the diversity of human anatomy in its content?

The 4th edition incorporates diverse perspectives by including content that addresses variations in human anatomy due to factors such as age, sex, and ethnicity, promoting a more inclusive understanding of anatomy and physiology.

Find other PDF article:

<https://soc.up.edu.ph/33-gist/files?dataid=egg96-2442&title=introduction-to-health-behavior-theory-hayden.pdf>

[Anatomy Physiology An Integrative Approach 4th Edition](#)

Sioux Funeral Home | Pine Ridge, SD Funeral Home & Cremation

Jun 11, 2025 · Sioux Funeral Home offers funeral, burial, cremation, preplanning, and grief support services to our community and the areas surrounding Pine Ridge, SD.

Obituary Listings | Sioux Funeral Home

Sioux Funeral Home offers funeral, burial, cremation, preplanning, and grief support services to our community and the areas surrounding Pine Ridge, SD.

About Us - Sioux Funeral Home

Sioux Funeral Home offers funeral, burial, cremation, preplanning, and grief support services to our community and the areas surrounding Pine Ridge, SD.

Pine Ridge Location - Sioux Funeral Home

Sioux Funeral Home offers funeral, burial, cremation, preplanning, and grief support services to our community and the areas surrounding Pine Ridge, SD.

Our Services - Sioux Funeral Home

Sioux Funeral Home offers funeral, burial, cremation, preplanning, and grief support services to our community and the areas surrounding Pine Ridge, SD.

Obituary information for Kimberly Kay (Kelso) Trujillo

Burial services will be held at 2:15 PM, Saturday, July 19, 2025 at the Rushville City Cemetery in Rushville, NE under the direction of the Sioux Funeral Home of Pine Ridge, SD.

Obituary information for Aloysius Dominic Running Hawk

View Aloysius Dominic Running Hawk's obituary, contribute to their memorial, see their funeral service details, and more.

Obituary information for Lawrence Ray Brewer

Burial Services: Cremation to follow services with interment to be held at 11:00 AM, Thursday, December 12, 2024 at the Mount Calvary Cemetery in Rapid City, SD. Arrangements ...

Obituary information for Josephine Isham - siouxfuneralhome.com

View Josephine Isham's obituary, contribute to their memorial, see their funeral service details, and more.

Obituary information for Anthony Lee Richards

Funeral Services: 10:00 AM, Tuesday, February 25, 2025 at the Woyatan Lutheran Church in Rapid City, SD. Burial Services: Holy Rosary Mission Cemetery, Pine Ridge, SD ...

1.68 - 52pojie.cn

Apr 24, 2022 · <https://pan ...>

2020app - 52pojie.cn

Mar 24, 2020 · 2020appv2020.0.73 802M4.X [hr]2020

[illegible]

human anatomy atlas - ...

Apr 14, 2020 · [○○○○○○○○○○ human anatomy atlas ○○○○○○○○○○○○○○○○○○○○○○○○○○○○○](#)

本站所有资源均来自互联网，如有侵权，请联系删除 - 52pojie.cn

Jun 2, 2021 · [0000] 00000000 [0000] 00000000

body Human Anatomy Atlas -

Nov 10, 2018 · visible body Human Anatomy Atlas 3D app

[illegible]

Organon Anatomy - Overview

[illegible]

□□[https://www.52 ...](https://www.52...)

Complete Anatomy windows - - 52pojie.cn

Apr 2, 2021 · Complete Anatomy windows [] ... » 1 2 / 2

Android - 面试题 - 面试题 - 52pojie.cn

Mar 21, 2016 · PC iPhone

Explore the 'Anatomy Physiology: An Integrative Approach

[Back to Home](#)