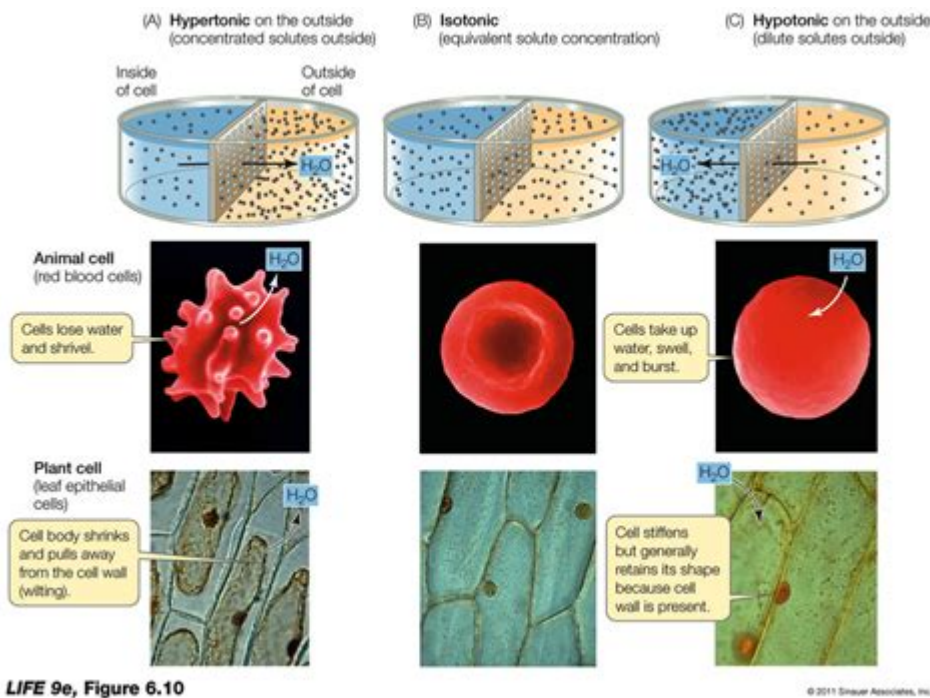


# Animal Cell In Hypertonic Solution



Animal cell in hypertonic solution refers to the condition where an animal cell is placed in a solution that has a higher concentration of solutes compared to the cytoplasm of the cell. This situation leads to a series of physiological and biochemical responses that are critical for understanding cell behavior under various osmotic conditions. The study of hypertonic solutions is vital in fields such as cell biology, medicine, and biochemistry. This article explores the effects of hypertonic solutions on animal cells, the underlying mechanisms involved, and the implications for biological systems.

## Understanding Osmosis and Hypertonic Solutions

### What is Osmosis?

Osmosis is a specialized type of passive transport that involves the movement of water molecules across a semipermeable membrane. In biological systems, osmosis is crucial for maintaining cellular homeostasis. The direction of water movement is determined by the concentration gradient of solutes on either side of the membrane.

- Semipermeable Membrane:** A membrane that allows certain molecules or ions to pass through while blocking others.
- Water Movement:** Water moves from an area of lower solute concentration (hypotonic solution) to an area of higher solute concentration (hypertonic solution).
- Equilibrium:** The process continues until equilibrium is reached, where solute concentrations are equal on both sides of the membrane.

# What is a Hypertonic Solution?

A hypertonic solution contains a higher concentration of solutes compared to the cytoplasm of a cell. When an animal cell is placed in such a solution, water moves out of the cell in an attempt to balance the solute concentrations. This can lead to several critical changes in the cell.

- Concentration Gradient: Water exits the cell as the solute concentration outside is higher.
- Cell Shrinkage: The loss of water causes the cell to shrink or crenate, which can impair its function.

## Effects of Hypertonic Solutions on Animal Cells

When animal cells are exposed to hypertonic solutions, several physiological changes occur. These changes can have significant consequences for the cell's viability and function.

### Crenation of Animal Cells

Crenation is the process by which animal cells lose water and shrink when placed in a hypertonic solution. This is often visible under a microscope as the cell membrane begins to pull away from the cell wall, creating a wrinkled appearance.

- Mechanism of Crenation:
- Water exits the cell through osmosis.
- The cell membrane retracts from the cell wall.
- The cytoplasm becomes more concentrated as solutes remain inside.

### Impact on Cellular Functions

The effects of hypertonic solutions on animal cells extend beyond mere physical changes; they also affect cellular functions:

1. Metabolic Activity:
  - Enzyme activity may decrease due to changes in substrate concentration and enzyme conformation.
  - Metabolic pathways may slow down or halt entirely.
2. Cellular Communication:
  - Signal transduction pathways can be disrupted, affecting communication between cells.
  - Hormonal responses might be altered due to changes in receptor availability.
3. Transport Mechanisms:

- Active transport processes may be impaired or require more energy as the cell attempts to maintain homeostasis.

## **Physiological Consequences of Cellular Shrinkage**

The shrinkage of animal cells due to hypertonicity can lead to several physiological consequences:

- Impaired Nutrient Uptake: As the cell shrinks, the surface area-to-volume ratio changes, making it harder for nutrients to enter the cell.
- Increased Waste Concentration: Waste products may accumulate, leading to toxicity.
- Cell Death: Prolonged exposure to hypertonic conditions can lead to apoptosis (programmed cell death) or necrosis (uncontrolled cell death).

## **Cellular Adaptation Mechanisms**

Despite the adverse effects of hypertonic solutions, some animal cells can adapt to these conditions through various mechanisms.

### **Regulatory Volume Decrease (RVD)**

Regulatory Volume Decrease (RVD) is a process by which cells respond to swelling or shrinkage by actively transporting ions and solutes to restore volume.

- Ion Transport: The cell may expel potassium ions ( $K^+$ ) and chloride ions ( $Cl^-$ ) to decrease internal solute concentration.
- Water Reabsorption: By regulating ion concentrations, cells can facilitate water reabsorption, helping them regain their original volume.

### **Production of Osmolytes**

Cells may also produce small organic molecules known as osmolytes to balance osmotic pressure:

- Compatible Solutes: These solutes do not interfere with cellular processes and help stabilize proteins and cellular structures.
- Examples of Osmolytes:
  - Urea
  - Betaine
  - Sorbitol

# Applications and Implications

Understanding the effects of hypertonic solutions on animal cells has significant implications in various fields, including medicine and biotechnology.

## Medical Applications

### 1. Clinical Treatments:

- Hypertonic saline solutions are used in medical settings to treat hyponatremia (low sodium levels).
- Understanding cell behavior in hypertonic conditions can improve the efficacy of drug delivery systems.

### 2. Tissue Preservation:

- Hypertonic solutions are used in organ preservation techniques to minimize cell damage during transplantation processes.

## Biotechnology and Research

### 1. Cell Culture Techniques:

- **Knowledge of osmosis and hypertonicity is essential for developing cell culture media.**
- **Researchers can manipulate osmotic conditions to study cell behavior, drug responses, and metabolic pathways.**

### 2. Pharmaceutical Development:

- **Understanding how cells respond to hypertonic environments can inform drug formulation and delivery methods.**

## Conclusion

**In summary, the effects of animal cell in hypertonic**

**solution highlight the delicate balance of osmotic pressures that cells must navigate to maintain homeostasis. The physiological and biochemical responses to hypertonic environments underscore the importance of understanding cellular behavior in various contexts. From medical applications to biotechnological advancements, the implications of hypertonicity are vast and significant.**

**By studying how animal cells react to hypertonic solutions, we gain invaluable insights into cellular physiology, potential therapeutic strategies, and innovative applications in science and medicine. Understanding these processes not only enhances our knowledge of basic biological functions but also aids in the development of interventions that can improve human health and disease management.**

## **Frequently Asked Questions**

**What happens to an animal cell when placed in a hypertonic solution?**

**When an animal cell is placed in a hypertonic solution, water exits the cell, causing it to shrivel or crenate due to the higher solute concentration outside the cell.**

**Why does water move out of an animal cell in a hypertonic solution?**

**Water moves out of the cell in a hypertonic solution to balance the solute concentrations on both sides of the cell membrane, following the principle of osmosis.**

**What are the physiological effects of animal cells in a hypertonic environment?**

**Physiological effects include cell shrinkage, disruption of cellular processes, and potential cell death if the hypertonic condition persists.**

**How can hypertonic solutions be used in medical treatments?**

**Hypertonic solutions can be used in medical treatments such as to reduce swelling in certain injuries or to treat hyponatremia by drawing excess water out of cells.**

**What types of cells are most affected by hypertonic solutions?**

**All animal cells can be affected by hypertonic solutions, but cells with less structural support, like red blood cells, may show more pronounced effects, such as crenation.**

**Can an animal cell recover after being placed in a hypertonic solution?**

**An animal cell may recover if returned to an isotonic environment quickly, allowing it to regain lost water and return to its normal shape, provided no irreversible damage occurred.**

**What laboratory experiments demonstrate the effects of hypertonic solutions on animal cells?**

**Laboratory experiments often involve observing red blood cells under a microscope after exposure to hypertonic saline solutions to visualize cell shrinkage.**

**Is there a difference in how plant and animal cells**

**respond to hypertonic solutions?**

**Yes, plant cells typically become plasmolyzed in hypertonic solutions, where the cell membrane pulls away from the cell wall, while animal cells simply shrink without a rigid cell wall.**

**What role do aquaporins play in the context of animal cells in hypertonic solutions?**

**Aquaporins are water channel proteins that facilitate the movement of water across cell membranes, but in hypertonic solutions, their role is limited as water is primarily lost rather than gained.**

**Find other PDF article:**

**<https://soc.up.edu.ph/06-link/Book?trackid=IlZ83-2252&title=answers-to-mcdougal-littell-algebra-1.pdf>**

## **Animal Cell In Hypertonic Solution**

***My favourite animal is a cat/the cat/cats. -***

***UsingEnglish.com***

**Dec 28, 2021 · Note that when you say My favourite animal is the cat, the phrase 'the cat' does not refer to a specific individual animal, but rather to the whole species, which is a more ...**

**Idioms about Animals (Page 1) - UsingEnglish.com**

**Our 'Animals' category contains 373 idiomatic expressions with definitions and the language of origin.**

## **Violent or graphic content policies - YouTube Help - Google Help**

**Content that shows animal suffering, neglect, or mistreatment to shock the viewer or glorify the abuse, and doesn't give enough educational, documentary, scientific, or artistic context. ...**

**Describing animals with adverbs of manner games  
Guessing and brainstorming games to practise well, badly, quickly, slowly, etc, with useful animal vocabulary.**

**Search by latitude & longitude in Google Maps  
On your computer, open Google Maps. On the map, right-click the place or area. A pop-up window appears. At the top, you can find your latitude and longitude in decimal format. To ...**

## **On ANIMAL AVATAR MERGE HOW TO PLAY LEVEL 8? - Google Help**

**Here are some tips on how to play level 8 of Animal Avatar Merge: Use the power-ups wisely. The power-ups can be very helpful in clearing the level, so make sure to use them wisely. The best ...**

**How do I track my sleep with my Fitbit device?  
If your device doesn't track heart rate, you can check your sleep pattern in the Fitbit app. Your sleep pattern includes your time spent awake, restless, and asleep. Restless sleep indicates ...**

**Animals Lesson Plans & Worksheets - UsingEnglish.com  
Browse our collection of PDF lesson plans and**



**worksheets about 'Animals' for English language teachers, complete with answers and teachers' notes. Free to download and use in class!**

***Animal perro - Comunidad de Gmail - Google Help***

**Mar 24, 2020 · Es posible que el contenido de la comunidad no esté verificado ni actualizado. Consulta más información.**

***Violent or graphic content policies - YouTube Help - Google Help***

**Content that shows animal suffering, neglect or mistreatment to shock the viewer or glorify the abuse and doesn't give enough educational, documentary, scientific or artistic context. ...**

**My favourite animal is a cat/the cat/cats. -**

**UsingEnglish.com**

**Dec 28, 2021 · Note that when you say My favourite animal is the cat, the phrase 'the cat' does not refer to a specific individual animal, but rather to the whole species, which is a more general idea. You can make the same kind of reference when talking about concepts like inventions, for example: Q: What's the best invention of the twentieth century?**

**Idioms about Animals (Page 1) - UsingEnglish.com**

**Our 'Animals' category contains 373 idiomatic expressions with definitions and the language of origin.**

**Violent or graphic content policies - YouTube Help - Google Help**

**Content that shows animal suffering, neglect, or**

**mistreatment to shock the viewer or glorify the abuse, and doesn't give enough educational, documentary, scientific, or artistic context. Bullfighting with bulls being harmed, like swords in the bull. Hunting using non-standard practices, like bombs or poison.**

### ***Describing animals with adverbs of manner games***

**Guessing and brainstorming games to practise well, badly, quickly, slowly, etc, with useful animal vocabulary.**

### **Search by latitude & longitude in Google Maps**

**On your computer, open Google Maps. On the map, right-click the place or area. A pop-up window appears. At the top, you can find your latitude and longitude in decimal format. To copy the coordinates, click on the latitude and longitude.**

### ***On ANIMAL AVATAR MERGE HOW TO PLAY LEVEL 8? - Google Help***

**Here are some tips on how to play level 8 of Animal Avatar Merge: Use the power-ups wisely. The power-ups can be very helpful in clearing the level, so make sure to use them wisely. The best power-ups to use are the ones that can clear a large area of the board, such as the bomb and the lightning bolt. Combine animals of the same type to create more powerful animals. The more ...**

### ***How do I track my sleep with my Fitbit device?***

**If your device doesn't track heart rate, you can check your sleep pattern in the Fitbit app. Your sleep pattern includes your time spent awake, restless, and asleep. Restless sleep indicates that you move in your sleep,**

**like if you toss and turn. If your device detects excessive movement, enough that restful sleep won't be possible, your device records time spent awake. Fitbit ...**

**Animals Lesson Plans & Worksheets - UsingEnglish.com**  
**Browse our collection of PDF lesson plans and worksheets about 'Animals' for English language teachers, complete with answers and teachers' notes. Free to download and use in class!**

**Animal perro - Comunidad de Gmail - Google Help**  
**Mar 24, 2020 · Es posible que el contenido de la comunidad no esté verificado ni actualizado. Consulta más información.**

***Violent or graphic content policies - YouTube Help - Google Help***

**Content that shows animal suffering, neglect or mistreatment to shock the viewer or glorify the abuse and doesn't give enough educational, documentary, scientific or artistic context. Bullfighting with bulls being harmed, like swords in the bull. Hunting ...**

**Discover how an animal cell reacts in a hypertonic solution. Uncover the science behind osmosis and its effects on cell function. Learn more now!**

**[Back to Home](#)**